



(LTCC) COAXIAL

High Pass Filter

VHF-3500A+

50Ω 3900 to 7000 MHz SMA Male/Female

KEY FEATURES

- Rugged Unibody Construction, Small Size
- 5 Sections
- Temperature Stable
- Excellent Power Handling, 7 W
- Low Cost

APPLICATIONS

- Sub-Harmonic Rejection
- Transmitters/Receivers
- Lab Use

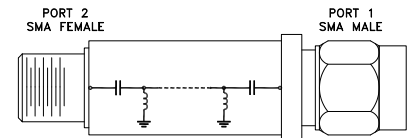
PRODUCT OVERVIEW

VHF-3500A+ is a 50Ω high pass filter built in rugged unibody construction. Covering a passband of 3900 to 7000 MHz, this model offers good matching within the passband and good rejection in the stopband. It can handle a high power of 7W with a wide operating temperature range from -55°C to +100°C.



Generic photo used for illustration purposes only

FUNCTIONAL DIAGRAM



ELECTRICAL SPECIFICATIONS¹ AT +25°C

Parameter		F#	Frequency (MHz)	Min.	Typ.	Max.	Units
Pass Band	Insertion Loss	F3-F4	3900 - 4000	—	1.1	2	dB
		F4-F5	4000 - 7000	—	1.0	1.6	
	Return Loss	F3-F5	3900 - 4000	—	13	—	dB
		F4-F5	4000 - 7000	—	13	—	
Stop Band	Rejection	DC-F1	DC - 2800	20	31	—	dB
		F1-F2	2800 - 2900	20	29	—	
	Freq. Cut-Off ²	Fc	3500	—	3	—	dB

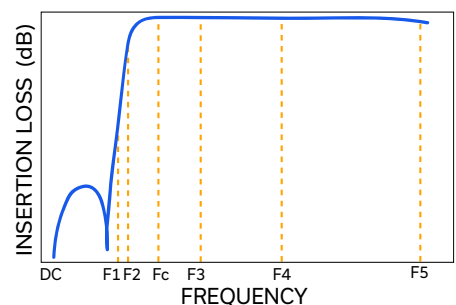
1. This component should not be used as a DC-block. In applications where DC voltage and/or current is present at either the input or output ports, external DC blocking capacitors are required.
 2. Typical variation ±5%

ABSOLUTE MAXIMUM RATINGS³

Parameter	Ratings
Operating Temperature	-55°C to +100°C
Storage Temperature	-55°C to +100°C
Input Power ⁴	7 W at +25°C

3. Permanent damage may occur if any of these limits are exceeded.
 4. Power rating applies only to signals within the passband. Power rating above +25°C operating temperature decreases linearly to 1.3 W at +125°C.

TYPICAL FREQUENCY RESPONSE



REV. OR
 ECO-019841
 VHF-3500A+
 EDU4890
 URJ
 240627





(LTCC) COAXIAL

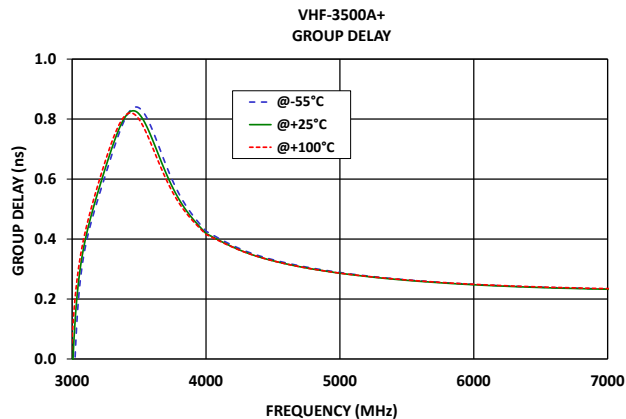
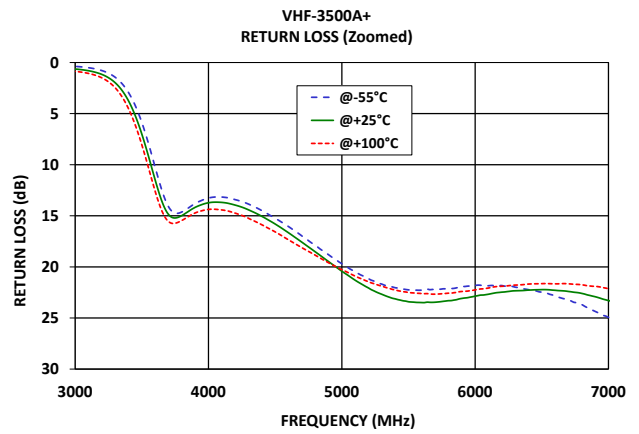
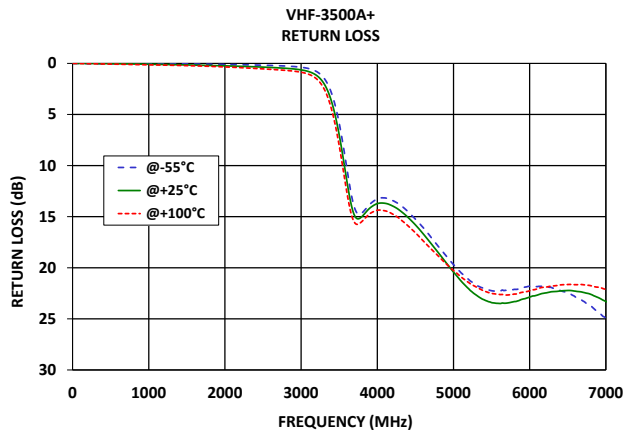
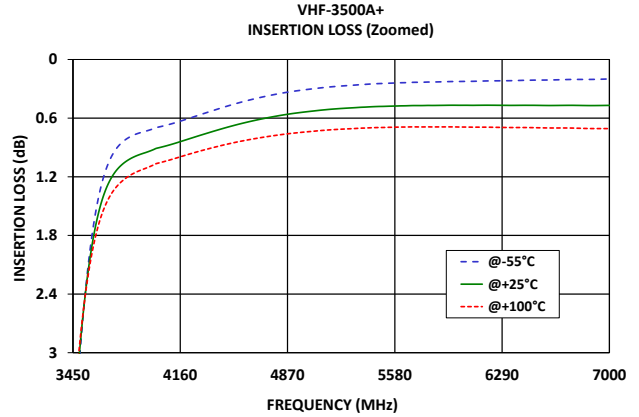
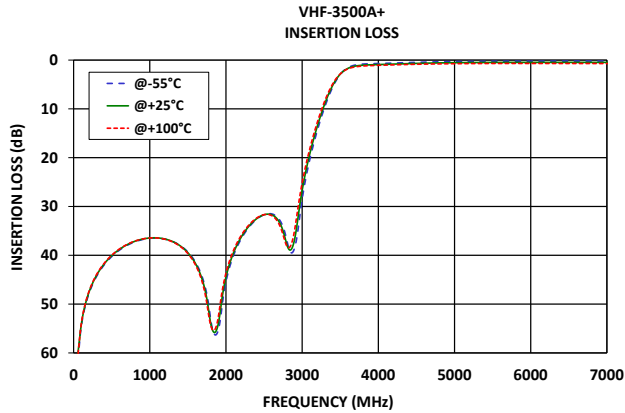
High Pass Filter

VHF-3500A+

Mini-Circuits

50Ω 3900 to 7000 MHz SMA Male/Female

TYPICAL PERFORMANCE GRAPHS





(LTCC) COAXIAL

High Pass Filter

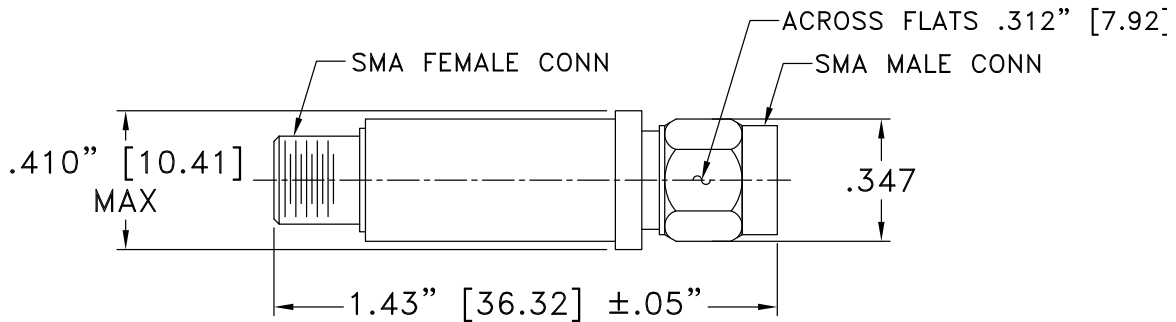
VHF-3500A+

50Ω 3900 to 7000 MHz SMA Male/Female

CONNECTOR DESCRIPTION

Function	Functionality	Connector
RF1	Port-1	SMA-Male
RF2	Port-2	SMA-Female

CASE STYLE DRAWING



Unit weight: 10.0grams

Dimensions are in inches (mm). Tolerances: 2 Pl. ±.04"; 3 Pl. ±.30"

PRODUCT MARKING*: VHF-3500A+

*Marking may contain other features or characters for internal lot control.



(LTCC) COAXIAL

High Pass Filter

VHF-3500A+

50Ω 3900 to 7000 MHz SMA Male/Female

ADDITIONAL INFORMATION IS AVAILABLE ON OUR DASHBOARD

[CLICK HERE](#)

Performance Data & Graphs	<p>Data</p> <p>Graphs</p> <p>S-Parameter (S2P Files) Data Set (.zip file)</p>
Case Style	FF704
RoHS Status	Compliant
Environmental Ratings	ENV113

NOTES

- A. Performance and quality attributes and conditions not expressly stated in this specification document are intended to be excluded and do not form a part of this specification document.
- B. Electrical specifications and performance data contained in this specification document are based on Mini-Circuits' applicable established test performance criteria and measurement instructions.
- C. The parts covered by this specification document are subject to Mini-Circuits' standard limited warranty and terms and conditions (collectively, "Standard Terms"); Purchasers of this part are entitled to the rights and benefits contained therein. For a full statement of the standard terms and the exclusive rights and remedies thereunder, please visit Mini-Circuits' website at www.minicircuits.com/terms/viewterm.html

