

# Engineering Development Model

## High Pass Filter

## RHP-EDU1143

### Surface Mount

#### Important Note

This model has been designed, built and tested in our engineering department. Performance data represents model capability. At present it is a non-catalog model. On request, we can supply a final specification sheet, part number and price/delivery information.



Please click "Back", and then click "Contact Us" for Applications support.

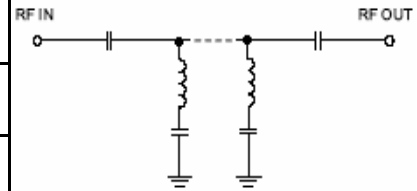
CASE STYLE : GP731

#### ELECTRICAL SPECIFICATIONS 50Ω @ +25°C

Parameter	Min.	Typ.	Max.	Units
Passband (Loss < 2 dB)	130		4000	MHz
FCO NOM (LOSS 3dB)		123		MHz
Stopband (Loss 20dB NOM)	1		117	MHz
Passband VSWR		1.2	1.7	(:1)
Stopband VSWR		20		(:1)

#### Functional Schematic

MAXIMUM RATINGS	
Operating Temperature	-40°C to 85°C
Storage Temperature	-55°C to 100°C
RF Power Input	10mW



#### PIN CONNECTIONS

Input	2
Output	6
Not Connected	-
Case Ground	1,3,4,5,7,8



P.O. Box 350166, Brooklyn, New York 11235-0003 (718) 934-4500 Fax (718) 332-4661 For detailed performance specs & shopping online see Mini-Circuits web site



Provides ACTUAL Data Instantly From MINI-CIRCUITS At: [www.minicircuits.com](http://www.minicircuits.com)

RF/MICROWAVE COMPONENTS

REV. X1  
RHP-EDU1143  
URJ  
090121  
Page 1 of 1