

# Plug-In Low Pass Filter

PLP-50-75+  
PLP-50-75

75Ω DC to 48 MHz

## Maximum Ratings

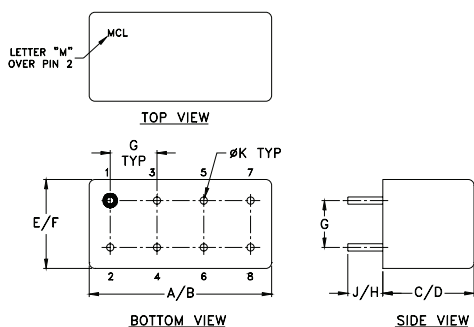
Operating Temperature	-55°C to 100°C
Storage Temperature	-55°C to 100°C
RF Power Input	0.5W max.

Permanent damage may occur if any of these limits are exceeded.

## Pin Connections

INPUT	1
OUTPUT	8
GROUND	2,3,4,5,6,7
CASE GROUND	2,3,4,5,6,7

## Outline Drawing



## Outline Dimensions (Inch/mm)

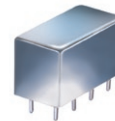
A	B	C	D	E	F
.770	.800	.385	.400	.370	.400
19.56	20.32	9.78	10.16	9.40	10.16
G	H	J	K	wt	
.200	.508	.14	.031	grams	
5.08	5.08	3.56	0.79	5.2	

## Features

- rugged welded case, hermetic
- other standard and custom PLP models available with wide selection of fco

## Applications

- test equipment
- lab use
- transmitters/receivers
- military/hi-rel applications



CASE STYLE: A01  
PRICE: \$15.20 ea. QTY (1-9)

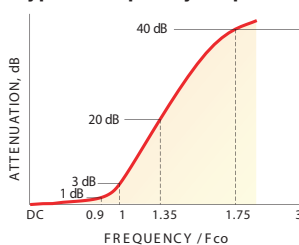
+ RoHS compliant in accordance with EU Directive (2002/95/EC)

The +Suffix identifies RoHS Compliance. See our web site for RoHS Compliance methodologies and qualifications.

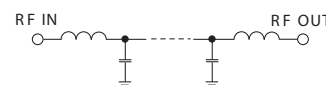
## Low Pass Filter Electrical Specifications

PASSBAND (MHz)	fco (MHz) Nom.	STOPBAND (MHz)		VSWR (:1)	
		(loss > 20 dB)	(loss > 40 dB)	Passband Typ.	Stopband Typ.
DC-48	55	70-90	90-200	1.7	18

## typical frequency response

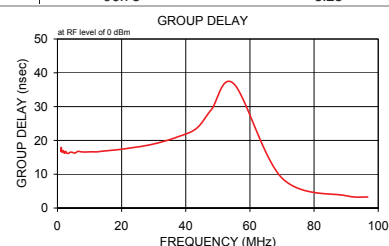
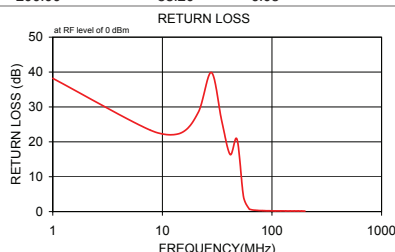
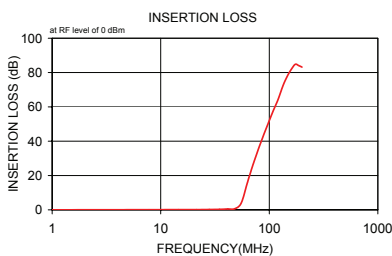


## electrical schematic



## Typical Performance Data

Frequency (MHz)	Insertion Loss (dB)		Return Loss (dB)	Frequency (MHz)	Group Delay (nsec)
	$\bar{x}$	$\sigma$			
1.00	0.01	0.00	38.19	1.00	16.76
7.80	0.08	0.00	23.31	1.17	17.94
14.50	0.12	0.01	22.43	1.37	16.55
21.30	0.14	0.01	28.49	1.59	16.64
28.00	0.19	0.01	39.87	1.86	16.96
34.80	0.27	0.02	25.97	2.17	16.16
41.50	0.48	0.03	16.38	2.53	16.75
48.00	0.63	0.04	20.68	2.95	16.20
55.00	3.81	0.50	4.27	3.45	16.18
62.00	14.53	0.69	0.76	4.02	16.52
63.60	16.91	0.68	0.62	4.69	16.48
65.20	19.16	0.69	0.53	5.47	16.26
66.80	21.32	0.68	0.47	6.38	16.76
68.40	23.37	0.68	0.43	7.53	16.62
70.00	25.32	0.68	0.40	8.78	16.58
71.60	27.20	0.68	0.38	10.36	16.64
75.30	31.26	0.69	0.33	12.08	16.61
79.00	35.00	0.70	0.31	14.25	16.83
82.60	38.35	0.70	0.28	16.63	17.06
86.30	41.53	0.76	0.27	19.61	17.35
90.00	44.62	0.79	0.25	22.88	17.79
93.70	47.42	0.86	0.24	26.98	18.37
107.00	56.64	1.34	0.21	31.48	19.30
120.30	64.18	2.20	0.20	37.13	20.94
133.60	72.29	3.53	0.19	43.31	23.52
146.90	77.99	7.23	0.19	48.00	29.12
160.10	81.98	4.24	0.19	55.00	36.74
173.40	84.80	2.33	0.18	70.00	8.86
186.70	84.07	3.68	0.16	90.00	3.63
200.00	83.20	6.05	0.15	96.73	3.25



**Mini-Circuits**  
ISO 9001 ISO 14001 AS 9100 CERTIFIED

P.O. Box 350166, Brooklyn, New York 11235-0003 (718) 934-4500 Fax (718) 332-4661 The Design Engineers Search Engine Provides ACTUAL Data Instantly at [minicircuits.com](http://minicircuits.com)

IF/RF MICROWAVE COMPONENTS

For detailed performance specs & shopping online see web site

Notes: 1. Performance and quality attributes and conditions not expressly stated in this specification sheet are intended to be excluded and do not form a part of this specification sheet. 2. Electrical specifications and performance data contained herein are based on Mini-Circuits' applicable established test performance criteria and measurement instructions. 3. The parts covered by this specification sheet are subject to Mini-Circuits standard limited warranty and terms and conditions (collectively, "Standard Terms"); Purchasers of this part are entitled to the rights and benefits contained therein. For a full statement of the Standard Terms and the exclusive rights and remedies thereunder, please visit Mini-Circuits' website at [www.minicircuits.com/MCLStore/terms.jsp](http://www.minicircuits.com/MCLStore/terms.jsp).

REV. A  
M98898  
PLP-50-75  
090820