

# Coaxial High Pass Filter

## NHP-50+

50Ω 41 to 800 MHz

### Maximum Ratings

Operating Temperature	-55°C to 100°C
Storage Temperature	-55°C to 100°C
RF Power Input	0.5W max.

Permanent damage may occur if any of these limits are exceeded.

### Features

- rugged shielded case
- other standard and custom NHP models available with wide selection of fco

### Applications

- lab use
- transmitters/receivers
- radio communications



CASE STYLE: FF57

Connectors	Model	Price	Qty.
N-Type	NHP-50+	\$39.95 ea.	(1-9)

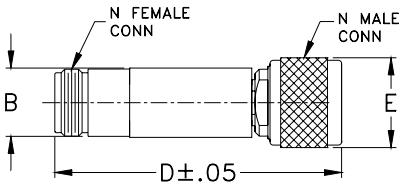
**+RoHS Compliant**

The +Suffix identifies RoHS Compliance. See our web site for RoHS Compliance methodologies and qualifications

### High Pass Filter Electrical Specifications

STOPBAND (MHz)		fco (MHz) Nom.	PASSBAND (MHz)	VSWR (:1)	
(loss > 40 dB)	(loss > 20 dB)	(loss 3 dB)	(loss < 1 dB)	Stopband Typ.	Passband Typ.
DC-20	20-26	37	41-800	17	1.5

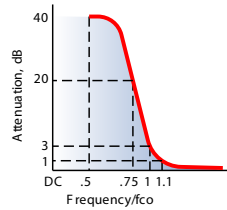
### Outline Drawing



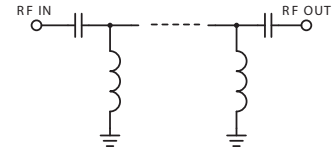
### Outline Dimensions (inch/mm)

B	D	E	wt
.67	2.90	.82	grams
17.02	73.66	20.83	90.0

### typical frequency response

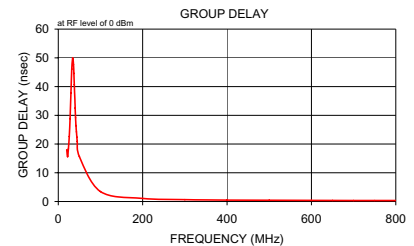
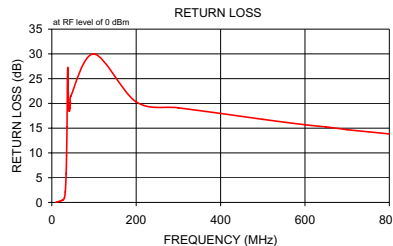
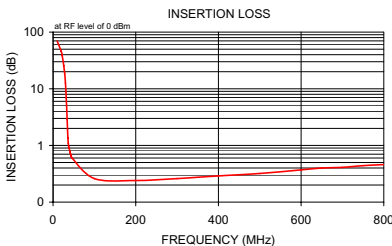


### electrical schematic



### Typical Performance Data

Frequency (MHz)	Insertion Loss (dB)	Return Loss (dB)	Frequency (MHz)	Group Delay (nsec)
	$\bar{x}$	$\sigma$		
10.00	69.20	3.81	20.00	18.03
20.00	45.38	0.93	22.00	15.59
22.00	38.53	1.25	24.00	18.34
24.00	31.83	1.18	26.00	22.61
26.00	25.35	1.28	28.00	28.85
28.00	18.94	1.39	30.00	37.79
30.00	12.65	1.53	32.00	46.09
32.00	6.90	1.45	34.00	49.90
34.00	2.95	0.88	35.00	49.53
35.00	1.94	0.57	36.00	47.70
36.00	1.35	0.34	37.00	44.59
37.00	1.09	0.20	38.00	40.68
38.00	0.94	0.11	39.00	36.49
39.00	0.89	0.08	40.00	32.54
40.00	0.82	0.05	41.00	29.16
41.00	0.77	0.04	42.00	26.41
42.00	0.72	0.03	43.00	24.22
43.00	0.69	0.02	44.00	22.42
44.00	0.65	0.03	45.00	20.92
45.00	0.61	0.02	50.00	15.63
100.00	0.26	0.01	100.00	3.44
200.00	0.24	0.01	200.00	1.07
300.00	0.26	0.01	300.00	0.65
400.00	0.29	0.01	400.00	0.50
500.00	0.32	0.01	500.00	0.44
600.00	0.37	0.01	600.00	0.40
650.00	0.40	0.01	650.00	0.38
700.00	0.41	0.02	700.00	0.36
750.00	0.44	0.02	750.00	0.36
800.00	0.46	0.02	800.00	0.36



### Notes

- Performance and quality attributes and conditions not expressly stated in this specification document are intended to be excluded and do not form a part of this specification document.
- Electrical specifications and performance data contained in this specification document are based on Mini-Circuit's applicable established test performance criteria and measurement instructions.
- The parts covered by this specification document are subject to Mini-Circuit's standard limited warranty and terms and conditions (collectively, "Standard Terms"); Purchasers of this part are entitled to the rights and benefits contained therein. For a full statement of the Standard Terms and the exclusive rights and remedies thereunder, please visit Mini-Circuit's website at [www.minicircuits.com/MCLStore/terms.jsp](http://www.minicircuits.com/MCLStore/terms.jsp)

