

Surface Mount Diplexer

NON-CATALOG

DPLX-4254-75+

75Ω 5 to 870 MHz (5-42, 54-870 MHz)

Maximum Ratings

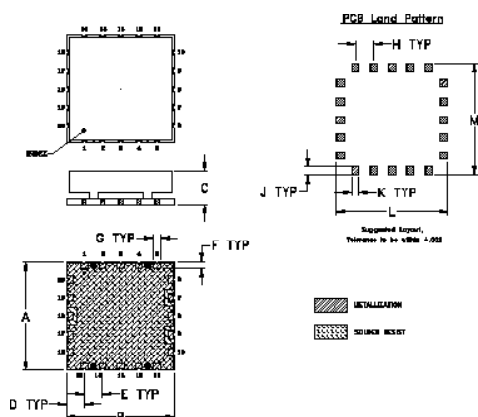
Operating Temperature	-55°C to 85°C
Storage Temperature	-55°C to 100°C
RF Power Input	250mW at 25°C

Note: Permanent damage may occur if any of these limits are exceeded. These ratings are not intended for continuous normal operation.

Pin Connections

HIGH PASS PORT	7
LOW PASS PORT	9
COMMON PORT	18
GROUND	1-6,8,10-17,19,20

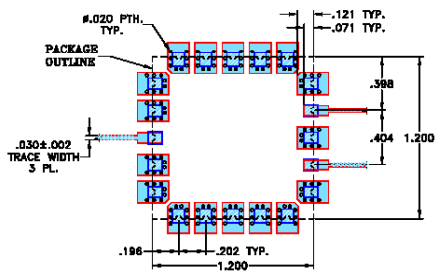
Outline Drawing



Outline Dimensions (inch/mm)

A	B	C	D	E	F	
1.200	1.200	.370	.196	.202	.071	
30.48	30.48	9.40	4.98	5.13	1.80	
G	H	J	K	L	M	wt.
.079	.202	.091	.079	1.240	1.240	grams
2.01	5.13	2.31	2.01	31.50	31.50	8.5

Demo Board MCL P/N: TB-563+
Suggested PCB Layout (PL-228)



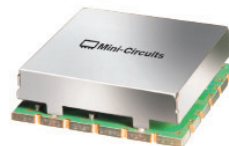
- NOTES:**
1. TRACE WIDTH IS SHOWN FOR OAK-802 WITH DIELECTRIC THICKNESS .088"±.002". COPPER: 1/2 OZ. EACH SIDE. FOR OTHER MATERIALS TRACE WIDTH MAY NEED TO BE MODIFIED.
 2. BOTTOM SIDE OF THE PCB IS CONTINUOUS GROUND PLANE.
- DENOTES PCB COPPER LAYOUT WITH SMOBC (SOLDER MASK OVER BARE COPPER)
 - DENOTES COPPER LAND PATTERN FREE OF SOLDERMASK

Features

- Low Insertion Loss 0.5dB typ.
- High Isolation 60dB typ.
- 75 Ω Impedance
- Usable up to 1000 MHz

Applications

- CATV
- MMDS
- Set-Top Box



CASE STYLE: HR1176

+RoHS Compliant

The +Suffix identifies RoHS Compliance. See our web site for RoHS Compliance methodologies and qualifications

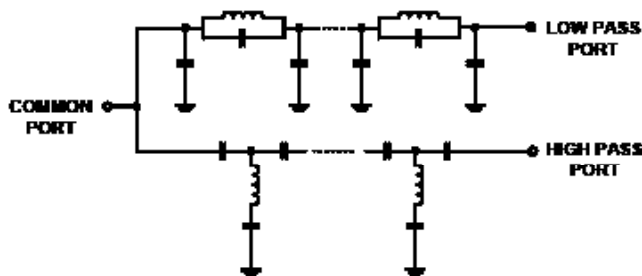
Electrical Specifications (T_{AMB} = 25°C)

Insertion Loss, dB PASSBAND MHz		Isolation, dB STOPBAND MHz				Cross Over Isolation (dB)	Return Loss (dB)										
5-42		54-870		54-870			5-42		Low Pass Port		High Pass Port		Common Port				
Typ.	Max.	Typ.	Max.	Typ.	Min.	Typ.	Min.	Typ.	Min.	Typ.	Min.	Typ.	Min.	Typ.	Min.		
0.5	1.2	0.5	1.4	50	40	60	35	30	17	25	18	20	11	30	22	23	11

Typical Performance Data (T_{AMB} = 25°C)

FREQUENCY (MHz)	INSERTION LOSS (dB)		CROSS OVER ISOLATION (dB) (between LPF and HPF)	RETURN LOSS (dB)		
	Low Pass Port	High Pass Port		Common Port	Low Pass Port	High Pass Port
5	0.07	61.67	62.95	34.95	34.58	0.01
20	0.19	62.13	62.09	32.08	33.43	0.06
32	0.40	66.98	68.54	42.50	34.00	0.26
41	0.88	51.11	50.32	21.91	20.12	0.80
42	0.98	43.19	43.22	24.42	21.35	0.94
44	1.41	32.07	32.27	18.81	24.12	1.31
46	3.88	23.59	24.95	6.12	6.95	2.04
48	12.68	8.28	24.58	4.27	1.96	4.88
50	27.29	2.78	32.13	11.28	0.98	14.57
52	41.03	1.60	43.85	19.86	0.66	36.57
54	52.64	1.19	54.82	21.30	0.51	25.68
55	53.95	1.08	55.40	21.22	0.46	24.17
80	67.87	0.35	70.63	24.11	0.15	23.17
100	74.51	0.25	74.82	34.71	0.13	29.48
200	61.58	0.18	65.65	23.61	0.17	22.91
400	59.25	0.24	57.06	18.36	0.23	18.84
600	54.63	0.35	53.67	16.07	0.25	16.36
800	50.91	0.47	50.60	13.89	0.29	14.30
870	50.27	0.57	44.86	13.45	0.68	13.67
1000	60.80	1.06	61.87	10.63	0.28	11.27

Functional Schematic



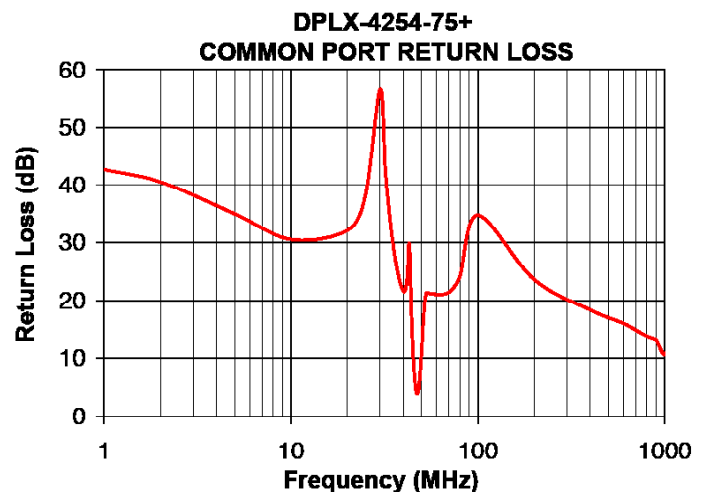
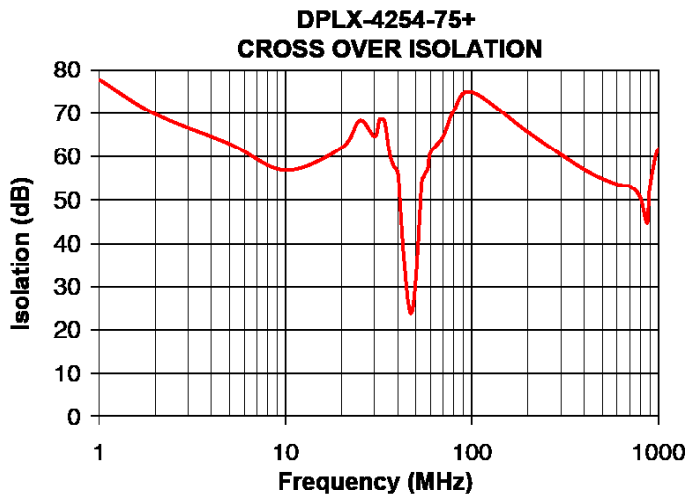
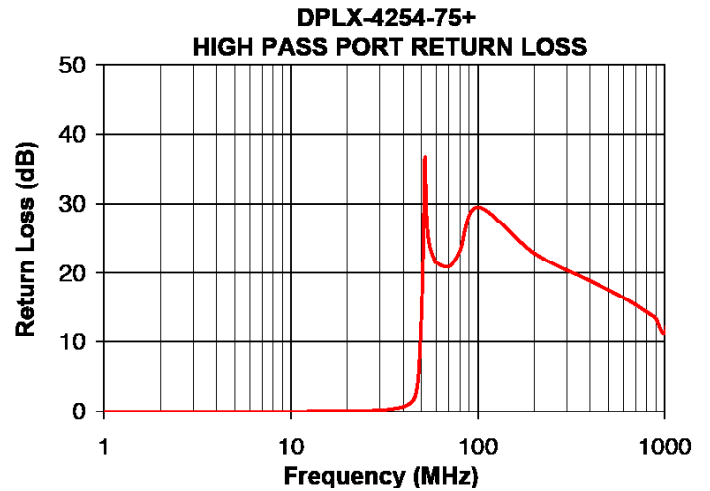
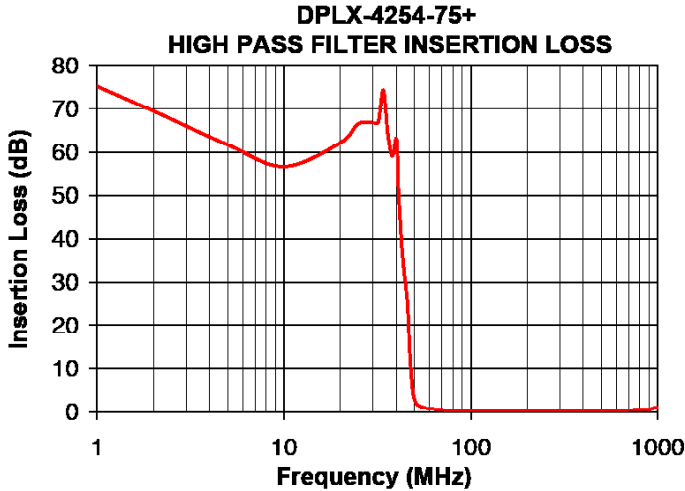
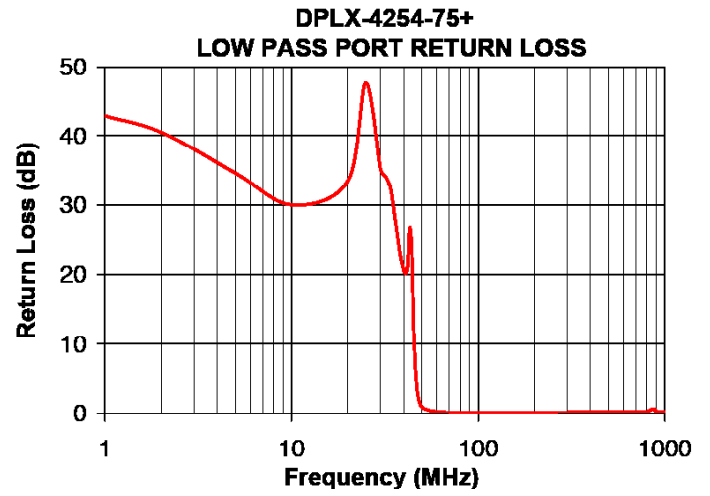
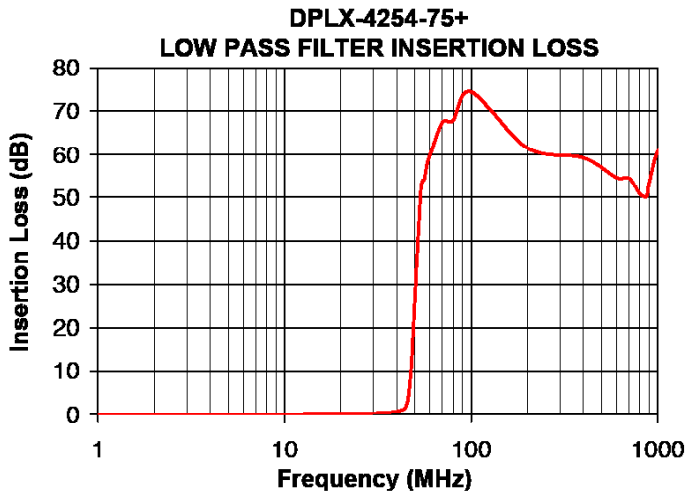
Notes

- Performance and quality attributes and conditions not expressly stated in this specification document are intended to be excluded and do not form a part of this specification document.
- Electrical specifications and performance data contained in this specification document are based on Mini-Circuits' applicable established test performance criteria and measurement instructions.
- The parts covered by this specification document are subject to Mini-Circuits' standard limited warranty and terms and conditions (collectively, "Standard Terms"); Purchasers of this part are entitled to the rights and benefits contained therein. For a full statement of the Standard Terms and the exclusive rights and remedies thereunder, please visit Mini-Circuits' website at www.minicircuits.com/MCLStore/terms.jsp



www.minicircuits.com P.O. Box 350166, Brooklyn, NY 11235-0003 (718) 934-4500 sales@minicircuits.com

REV.C
M151777
EDR-7669U
DPLX-4254-75+
URJ/RAV
150702
Page 1 of 2



Notes

- A. Performance and quality attributes and conditions not expressly stated in this specification document are intended to be excluded and do not form a part of this specification document.
- B. Electrical specifications and performance data contained in this specification document are based on Mini-Circuit's applicable established test performance criteria and measurement instructions.
- C. The parts covered by this specification document are subject to Mini-Circuits standard limited warranty and terms and conditions (collectively, "Standard Terms"); Purchasers of this part are entitled to the rights and benefits contained therein. For a full statement of the Standard Terms and the exclusive rights and remedies thereunder, please visit Mini-Circuits' website at www.minicircuits.com/MCLStore/terms.jsp

