



COAXIAL

Termination

ANNE-50W+

Mini-Circuits

50Ω 0.5 W DC to 110 GHz 1.0 mm Male

KEY FEATURES

- Ultra-Wideband, DC to 110 GHz
- Input Power Handling, 0.5 W
- Excellent VSWR, 1.24 typ.



Generic photo used for illustration purposes only

APPLICATIONS

- Optical communications
- Test & Measurement
- High-speed data systems
- Instrumentation
- Precision Measurements

HANDLING INSTRUCTIONS
 1.0 mm connectors require specific handling and torque values. See Mini-Circuits Application Note AN-71-001 for detail.

PRODUCT OVERVIEW

The Mini-Circuits ANNE-50W+ is an ultra-wideband 50Ω termination capable of absorbing signals up to 0.5 W from DC to 110 GHz. It provides excellent return loss across its entire operating frequency range, effectively dissipating signal power with minimal reflections. This model has a 1.0 mm male connector, allowing connection with a 1.0 mm female connector.

ELECTRICAL SPECIFICATIONS AT +25°C

Parameter	Frequency (GHz)	Min.	Typ.	Max.	Units
Frequency Range		DC	-	110	GHz
Average Power ¹	-	-	0.5	-	W
VSWR	DC-26.5	-	1.06	1.35	:1
	26.5-40	-	1.14	1.55	
	40-60	-	1.13	1.65	
	60-90	-	1.36	2.10	
	90-110	-	1.49	2.49	

1. Derates linearly to 10% at +100°C from +25°C.

ABSOLUTE MAXIMUM RATINGS²

Parameter	Ratings
Operating Case Temperature	-55°C to +100°C
Storage Temperature	-55°C to +100°C

2. Permanent damage may occur if any of these limits are exceeded.





COAXIAL

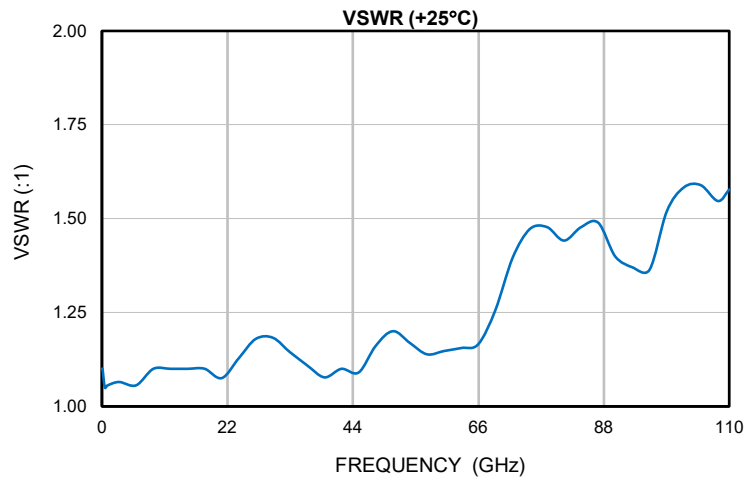
Termination

ANNE-50W+

Mini-Circuits

50Ω 0.5 W DC to 110 GHz 1.0 mm Male

TYPICAL PERFORMANCE GRAPHS





COAXIAL

Termination

ANNE-50W+

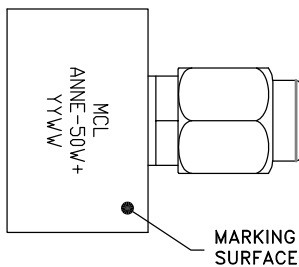
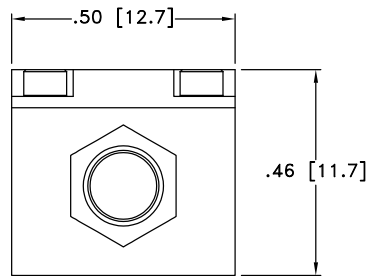
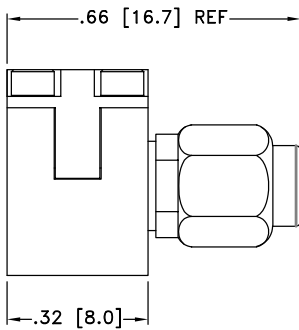
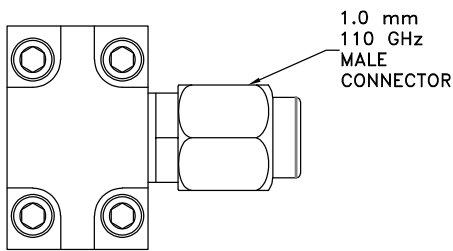
Mini-Circuits

50Ω 0.5 W DC to 110 GHz 1.0 mm Male

COAXIAL CONNECTIONS

Description	RF1 PORT
Connector Type	1.0 mm Male
Orientation	Straight

CASE STYLE DRAWING



Weight: 6.2 grams MAX

Dimensions are in inches [mm]. Tolerances: 2 PL ±.03[.76]; 3 PL ± .015[.38] inches[mm]

PRODUCT MARKING*: ANNE-50W+

*Marking may contain other features or characters for internal lot control.





COAXIAL

Termination

ANNE-50W+

 Mini-Circuits

50Ω 0.5 W DC to 110 GHz 1.0 mm Male

ADDITIONAL INFORMATION IS AVAILABLE ON OUR DASHBOARD

[CLICK HERE](#)

Performance Data & Graphs	Data Graphs S-Parameter (S1P Files) Data Set (.zip file)
Case Style	LL3603
RoHS Status	Compliant
Environmental Ratings	ENV142

NOTES

- A. Performance and quality attributes and conditions not expressly stated in this specification document are intended to be excluded and do not form a part of this specification document.
- B. Electrical specifications and performance data contained in this specification document are based on Mini-Circuit's applicable established test performance criteria and measurement instructions.
- C. The parts covered by this specification document are subject to Mini-Circuits standard limited warranty and terms and conditions (collectively, "Standard Terms"); Purchasers of this part are entitled to the rights and benefits contained therein. For a full statement of the standard terms and the exclusive rights and remedies thereunder, please visit Mini-Circuits' website at www.minicircuits.com/terms/viewterm.html

