



THIN FILM SURFACE MOUNT

# Bandpass Filter

## ABF-8G+

Mini-Circuits

50Ω

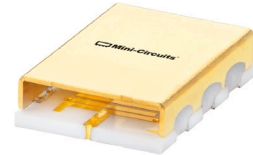
6200 to 9800 MHz

### KEY FEATURES

- Low Passband Insertion Loss of 1.3 dB Typ.
- High Rejection of 48 dB Typ.
- Good Return Loss of 16 dB Typ.
- Small Size, 5.59 x 8.13 x 2.03 mm

### APPLICATIONS

- X-Band Radar
- Test and Measurements

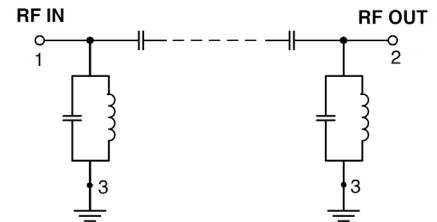


Generic photo used for illustration purposes only

### PRODUCT OVERVIEW

Mini-Circuits' Surface Mount Thin-Film filters offer low insertion loss and high rejection realized via Thin-Film on Alumina substrate, using a sputtering process that can guarantee an enhanced Q and repeatable performance. Low pass, high pass, and bandpass surface mount thin-film designs can be realized with this technology up to 40 GHz in a small form factor helping customers achieve their SWaP objectives. Using our high quality thin-film manufacturing process we can guarantee repeatability on large batches of filters.

### FUNCTIONAL DIAGRAM



### ELECTRICAL SPECIFICATIONS<sup>1,2,3</sup> AT +25°C

Parameter	F#	Frequency (MHz)	Min.	Typ.	Max.	Units	
Pass Band	Center Frequency <sup>4</sup>	—	—	8000	—	MHz	
	Insertion Loss	F1-F2	6200 - 9800	—	1.3	2.0	dB
	Return Loss	F1-F2	6200 - 9800	—	16	—	dB
Stopband, Lower	Rejection	DC-F3	DC - 3500	40	48	—	dB
		F3-F4	3500 - 4600	20	32	—	dB
Stopband, Upper	Rejection	F5-F6	11400 - 13000	25	33	—	dB
		F6-F7	13000 - 15000	37	48	—	dB
		F7-F8	15000 - 18000	—	20	—	dB

1. Tested on Evaluation Board P/N TB-ABF-8G+ with feedline losses removed by normalization of S12 and S21 traces to measurement of TB thru-line.

2. This filter is bi-directional RF1 and RF2 ports may be interchanged, see S-Parameters for actual performance.

3. This component is not intended for use as a DC-blocking circuit element. In applications where DC voltage and/or current is present at either the input or output ports, external DC blocking capacitors are required.

4. Typical variation ±3%.

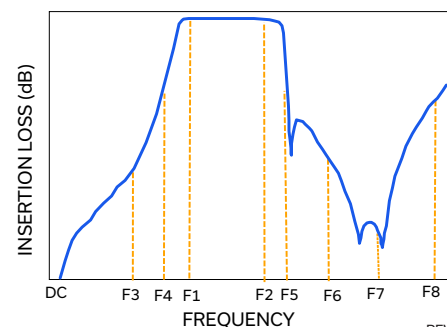
### ABSOLUTE MAXIMUM RATINGS<sup>5</sup>

Parameter	Ratings
Operating Temperature	-55°C to +125°C
Storage Temperature	-55°C to +125°C
Input Power <sup>6</sup>	12 W Max. at 25°C

5. Permanent damage may occur if any of these limits are exceeded.

6. Power rating applies only to signals within the passband. Derated power at +125°C is 3.2 W.

### TYPICAL FREQUENCY RESPONSE AT +25°C





THIN FILM SURFACE MOUNT

# Bandpass Filter

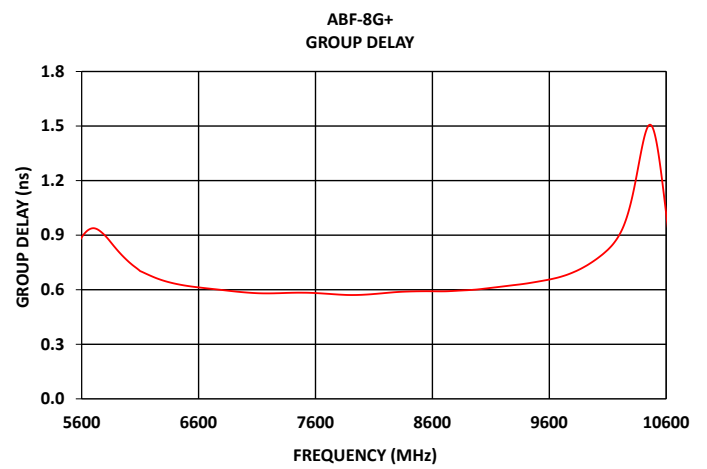
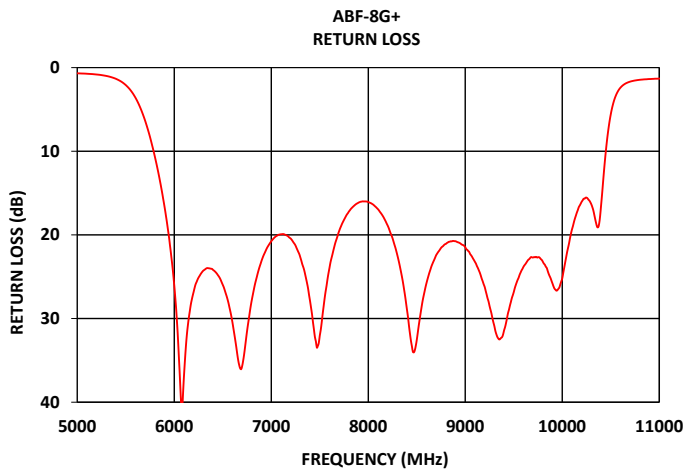
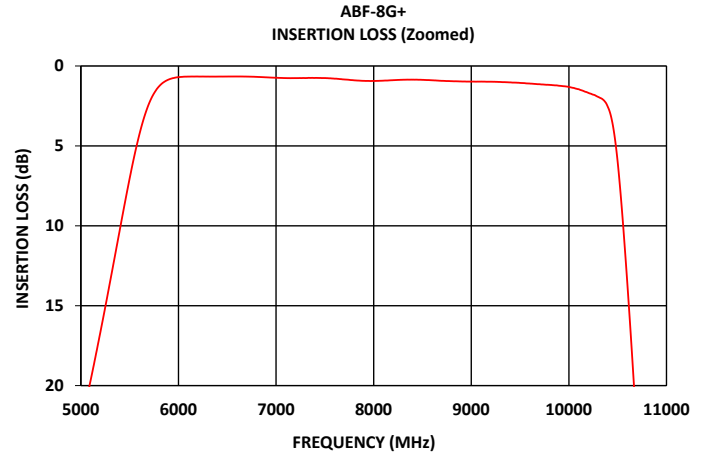
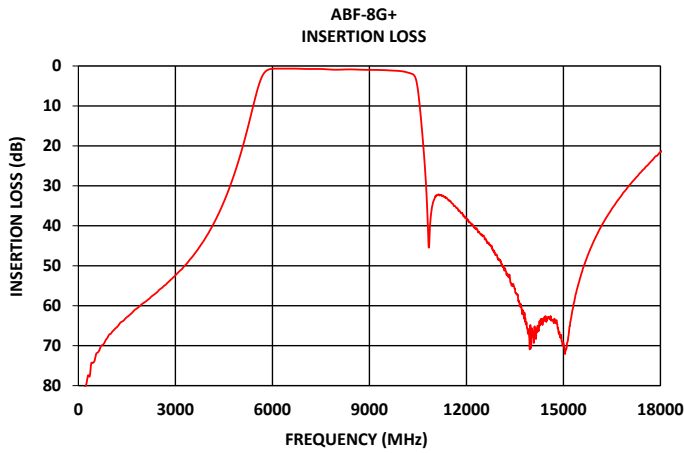
## ABF-8G+

Mini-Circuits

50Ω

6200 to 9800 MHz

### TYPICAL PERFORMANCE GRAPHS AT +25°C





### FUNCTIONAL DIAGRAM

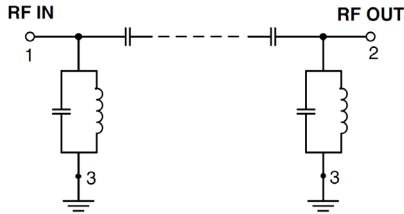
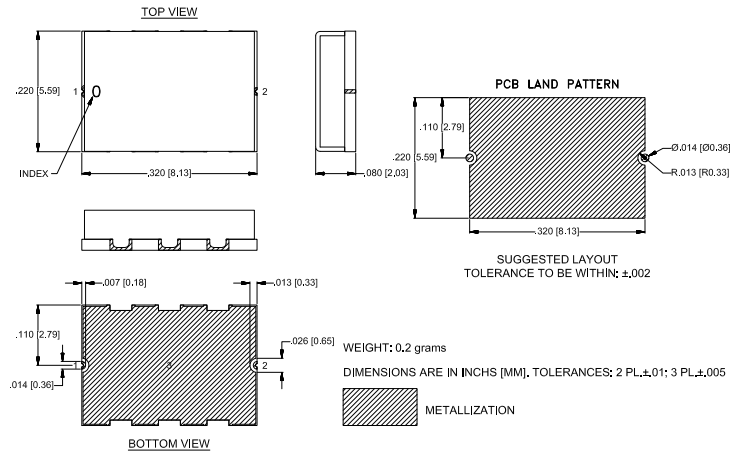


Figure 1. ABF-8G+ Functional Diagram

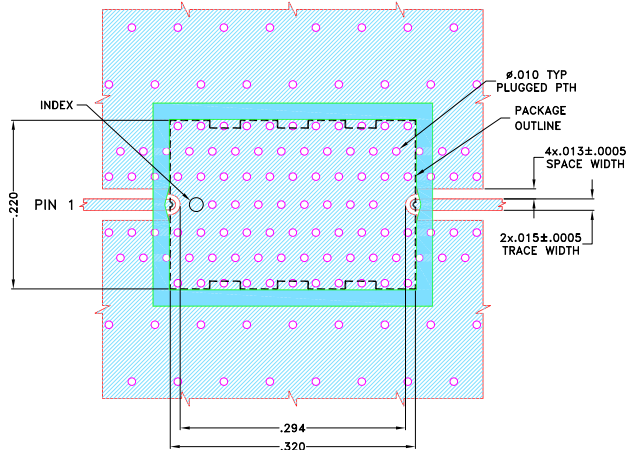
### PAD DESCRIPTION

Function	Pad Number	Description
RF1 <sup>2</sup>	1	Connects to RF Input Port
RF2 <sup>2</sup>	2	Connects to RF Output Port
GROUND	3	Connects to Ground on PCB, (See drawing PL-764)
NC	—	No connection, not used internally. See drawing PL-764 for connection to PCB

### CASE STYLE DRAWING



### SUGGESTED PCB LAYOUT (PL-764)



NOTES:

1. COPLANAR WAVEGUIDE PARAMETERS ARE SHOWN FOR ROGERS (RO4350B Lo Pro) WITH DIELECTRIC THICKNESS .0073±.0007. COPPER: 1/2 Oz. EACH SIDE. FOR OTHER MATERIALS TRACE WIDTH AND GAP MAY NEED TO BE MODIFIED.
  2. BOTTOM SIDE OF THE PCB IS CONTINUOUS GROUND PLANE.
- DENOTES PCB COPPER PATTERN WITH SMOBC (SOLDER MASK OVER BARE COPPER)  
 ■ DENOTES PCB COPPER PATTERN FREE OF SOLDERMASK

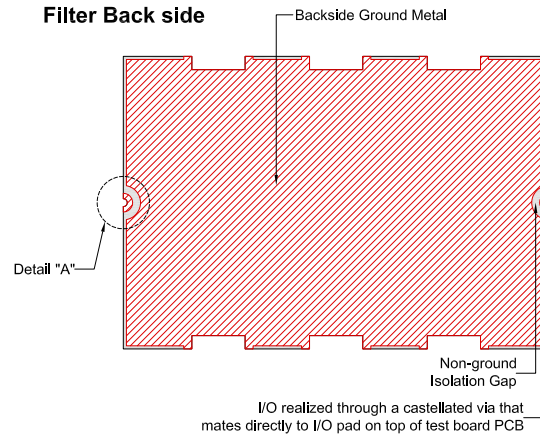
Figure 2. Suggested PCB Layout PL-764

### PRODUCT MARKING\*: ABF-8G

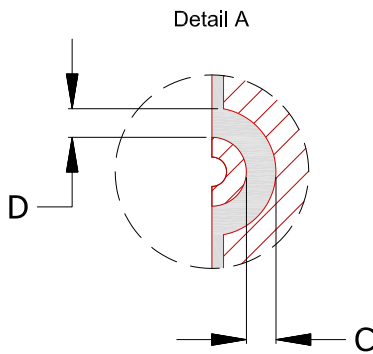
\*Marking may contain other features or characters for internal lot control.



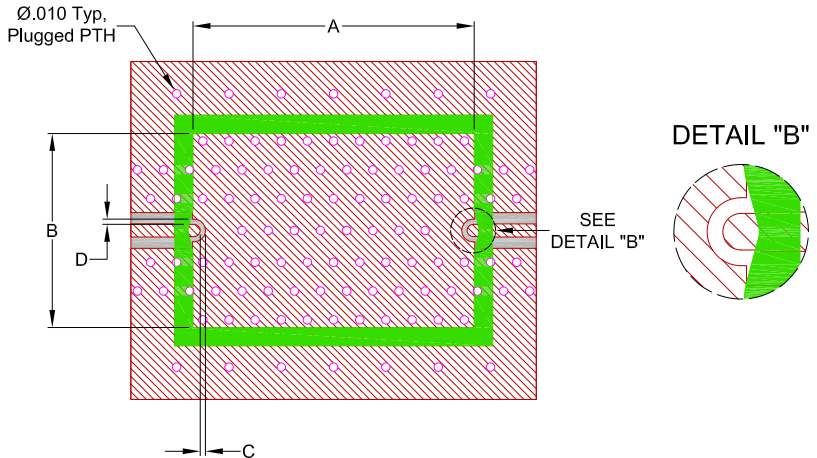
### RECOMMENDED PCB LAYOUT PATTERN FOR FILTER



Filter RF I/O Detail (Filter Back Side)



### PCB Pattern Recommendations



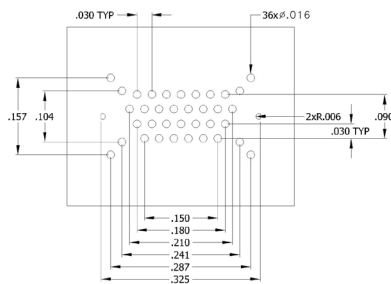
- 1) Customer PCB's ground pattern length (dimension A) can be similar to filter length.
- 2) Customer PCB's ground pattern width (dimension B) can be similar to filter width.
- 3) Dimensions C and D on Filter RF I/O detail and Customer PCB pattern can be closely match. The dimensions of C and D on the Customer PCB pattern can be slightly larger to account for component alignment tolerance (ground metal can be pulled back from RF I/O trace).
- 4) Recommend to use Solder mask at Customer PCB at outer area of filter pattern/ footprint with a clearance of about 1.25mil at each side. (Tighter registration tolerance required for solder mask)
- 5) Recommended to use Solder mask at I/O of Customer PCB as per above diagram (refer detail B).



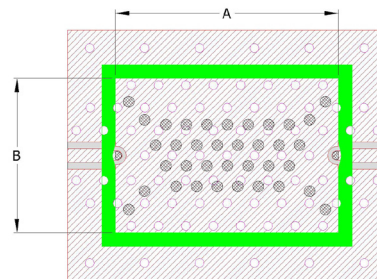
### COMMENTS ON COMPONENT HANDLING AND SOLDER ATTACH

- 1) Avoid using soldering iron directly to the ceramic filter. This would lead to development of crack in the component due to thermal shock.
- 2) Vacuum pick-up tool or plastic tweezers are recommended for handling the components. Extra care should be taken not to scratch the filter or metal area.
- 3) Use 2-3 mil thickness stencil plate and screen print the solder. Refer below picture for recommended stencil pattern to get the best solder attachment.

Stencil opening drawing



Solder location after screen print



- 4) Plugged ground vias in the PWB will improve attachment consistency.
- 5) Recommended to have a similar or closer test board material and thickness (refer Mini-Circuits evaluation board for details) to minimize the CTE over the temperature range.



THIN FILM SURFACE MOUNT

# Bandpass Filter

## ABF-8G+

50Ω

6200 to 9800 MHz

ADDITIONAL DETAILED INFORMATION IS AVAILABLE ON OUR DASHBOARD.

[CLICK HERE](#)

Performance Data and Graphs	Data
	Graphs
	S-Parameter (S2P Files) Data Set (.zip file) De-embedded to device pads
Case Style	UC2731    Lead Finish: Gold over Nickel Plate.
RoHS Status	Compliant
Tape and Reel	TR-F003
Suggested Layout for PCB Design	PL-764
Evaluation Board	TB-ABF-8G+
	Gerber File
Environmental Rating	ENV120

### NOTES

- A. Performance and quality attributes and conditions not expressly stated in this specification document are intended to be excluded and do not form a part of this specification document.
- B. Electrical specifications and performance data contained in this specification document are based on Mini-Circuits' applicable established test performance criteria and measurement instructions.
- C. The parts covered by this specification document are subject to Mini-Circuits' standard limited warranty and terms and conditions (collectively, "Standard Terms"); Purchasers of this part are entitled to the rights and benefits contained therein. For a full statement of the standard terms and the exclusive rights and remedies thereunder, please visit Mini-Circuits' website at [www.minicircuits.com/terms/viewterm.html](http://www.minicircuits.com/terms/viewterm.html)

