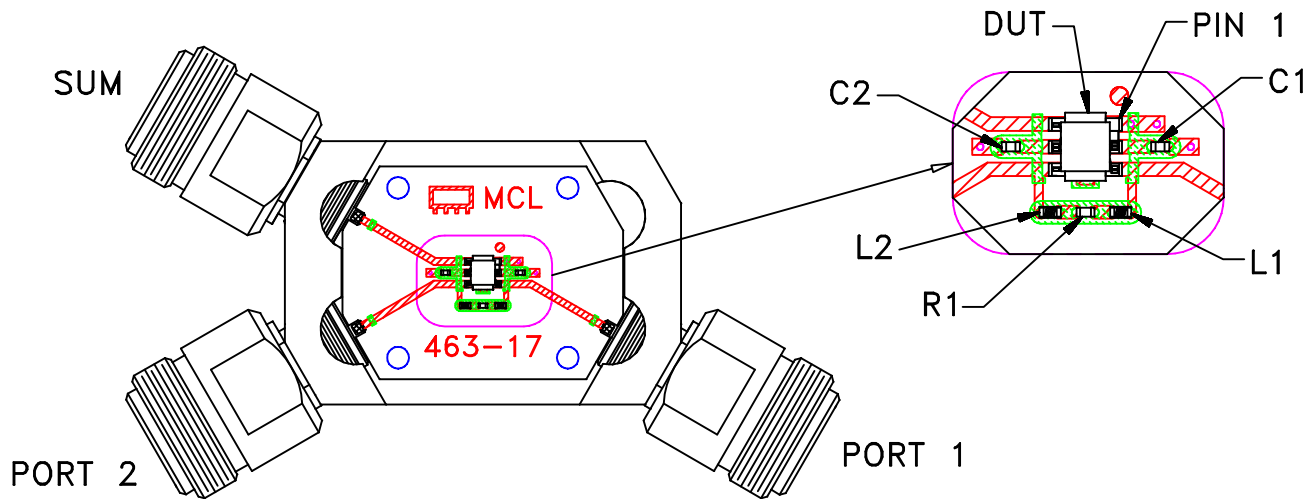
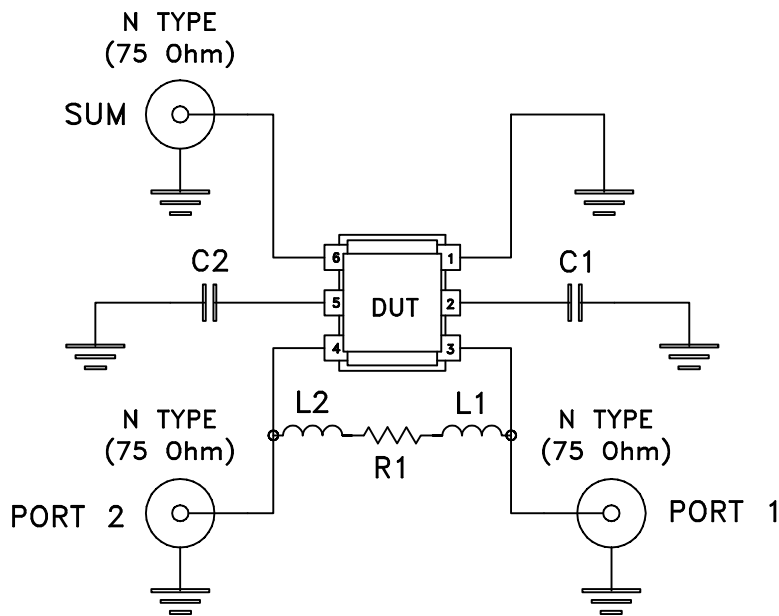


Evaluation Board and Circuit



TB-908+



ITEM	DESCRIPTION	SIZE
DUT	TCP-2-10-75-13+	-
C1,C2	CAP, 0.7 pF	0402
L1,L2	IND, 2.7 nH	
R1	RES, 150 Ohm	

Schematic Diagram

Notes:

1. 75 Ohm N type Female connectors.
2. PCB Material: RO4350 or equivalent,
Dielectric Constant=3.5, Thickness=.030 inch.

 Mini-Circuits®