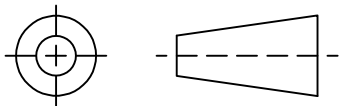


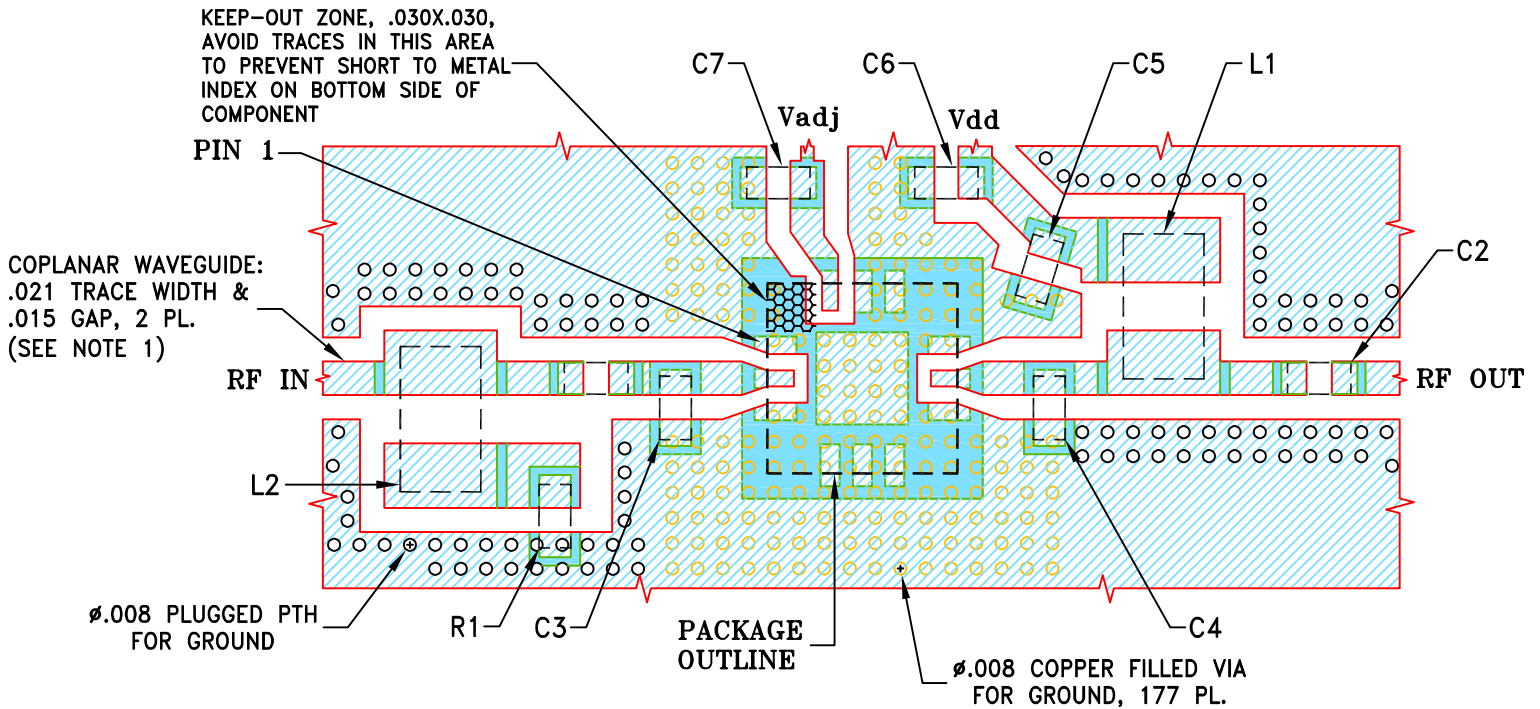
THIRD ANGLE PROJECTION



REVISIONS

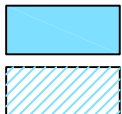
REV	ECN No.	DESCRIPTION	DATE	DR	AUTH
OR	ECO-024215	NEW RELEASE	01/16/25	ITG	IL
A	ECO-024979	UPDATED BASED ON NEW PCB LAYOUT	03/25/25	ITG	IL

SUGGESTED MOUNTING CONFIGURATION FOR
DQ1225 CASE STYLE



COMPONENT	SIZE
C1-C7	0402
L1,L2	0805
R1	0402

- NOTES:
- TRACE WIDTH AND GAP ARE SHOWN FOR ROGERS RO4350B, DIELECTRIC THICKNESS: .010"; COPPER: 1 Oz EACH SIDE. FOR OTHER MATERIALS TRACE WIDTH AND GAP MAY NEED TO BE MODIFIED.
 - CHIP COMPONENT FOOT PRINTS SHOWN FOR REFERENCE. FOR COMPONENT VALUES REFER TO TB-PMA3-43-1WC+.
 - BOTTOM SIDE OF THE PCB IS CONTINUOUS GROUND PLANE.



DENOTES PCB COPPER LAYOUT WITH SMOBC (SOLDER MASK OVER BARE COPPER)

DENOTES COPPER LAND PATTERN FREE OF SOLDER MASK

UNLESS OTHERWISE SPECIFIED	INITIALS	DATE
DIMENSIONS ARE IN INCHES	ITG	01/16/25
TOLERANCES ON:	GF	01/16/25
2 PL DECIMALS ±	IL	01/16/25
3 PL DECIMALS ± .005		
ANGLES ±		
FRACTIONS ±		



Mini-Circuits®

13 Neptune Avenue
Brooklyn NY 11235

PL, DQ1225, TB-PMA3-43-1WC+

Mini-Circuits®

THIS DOCUMENT AND ITS CONTENTS ARE THE PROPERTY OF MINI-CIRCUITS. EXCEPT FOR USE EXPRESSLY GRANTED, IN WRITING, TO ITS VENDORS, VENDEE AND THE UNITED STATES GOVERNMENT, MINI-CIRCUITS RESERVES ALL PROPRIETARY DESIGN, USE, MANUFACTURING AND REPRODUCTION RIGHTS THERETO. THESE CONTENTS SHALL NOT BE USED, DUPLICATED OR DISCLOSED TO ANY OUTSIDE PARTY, IN WHOLE OR IN PART, WITHOUT WRITTEN PERMISSION OF MINI-CIRCUITS.

SIZE	CODE IDENT	DRAWING NO:	REV:
A	15542	98-PL-812	A
FILE:	98PL812	SCALE: 8:1	SHEET: 1 OF 1