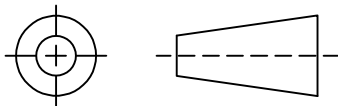


THIRD ANGLE PROJECTION

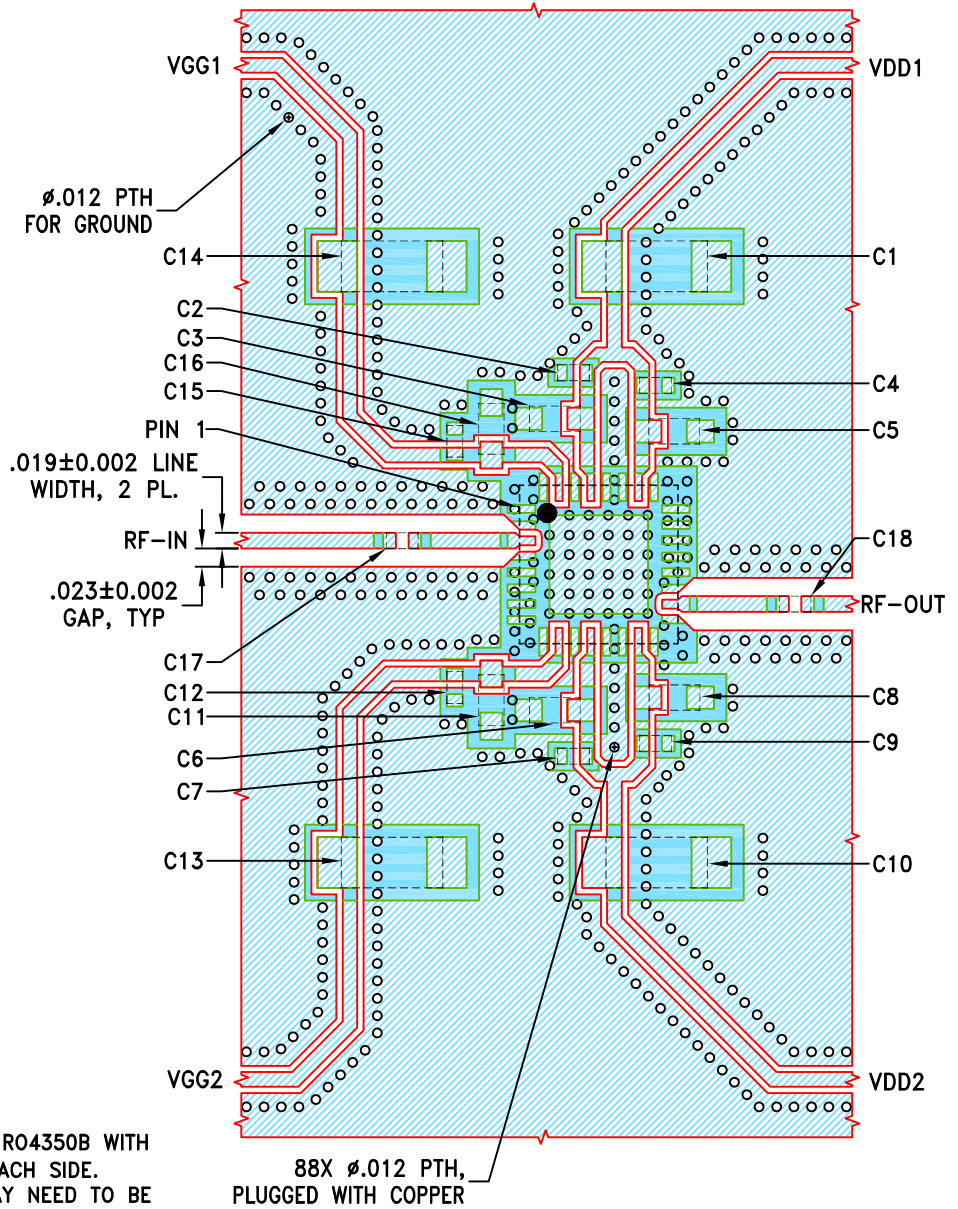


REVISIONS

REV	ECN No.	DESCRIPTION	DATE	DR	AUTH
OR	ECO-023879	NEW RELEASE	12/09/24	ITG	IL

SUGGESTED MOUNTING CONFIGURATION FOR DG1677-8 CASE STYLE

COMPONENT	SIZE
C1,C10,C13,C14	1206
C2,C4,C7,C9,C12,C15	0402
C3,C5,C6,C8,C11,C16	0603
C17,C18	0201



NOTES:

1. LINE WIDTH AND GAP ARE SHOWN FOR ROGERS RO4350B WITH DIELECTRIC THICKNESS .010"; COPPER: 1 OZ. EACH SIDE. FOR OTHER MATERIALS LINE WIDTH AND GAP MAY NEED TO BE MODIFIED.
2. CHIP COMPONENT FOOT PRINTS SHOWN FOR REFERENCE, FOR COMPONENT VALUES REFER TO TB-AVA-6183MPS+.
3. BOTTOM SIDE OF THE PCB IS CONTINUOUS GROUND PLANE.

- DENOTES PCB COPPER LAYOUT WITH SMOBC (SOLDER MASK OVER BARE COPPER).
- DENOTES COPPER LAND PATTERN FREE OF SOLDER MASK.

UNLESS OTHERWISE SPECIFIED	INITIALS	DATE
DIMENSIONS ARE IN INCHES	ITG	12/09/24
TOLERANCES ON:	GF	12/09/24
2 PL DECIMALS ±	IL	12/09/24
3 PL DECIMALS ± .005		
ANGLES ±		
FRACTIONS ±		

Mini-Circuits® 13 Neptune Avenue
Brooklyn NY 11235

PL,DG1677-8,TB-AVA-6183MPS(C)+

SIZE A	CODE IDENT 15542	DRAWING NO: 98-PL-808	REV: OR
FILE: 98PL808	SCALE: 4:1	SHEET: 1 OF 1	