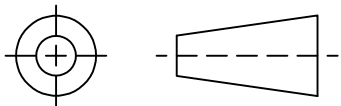


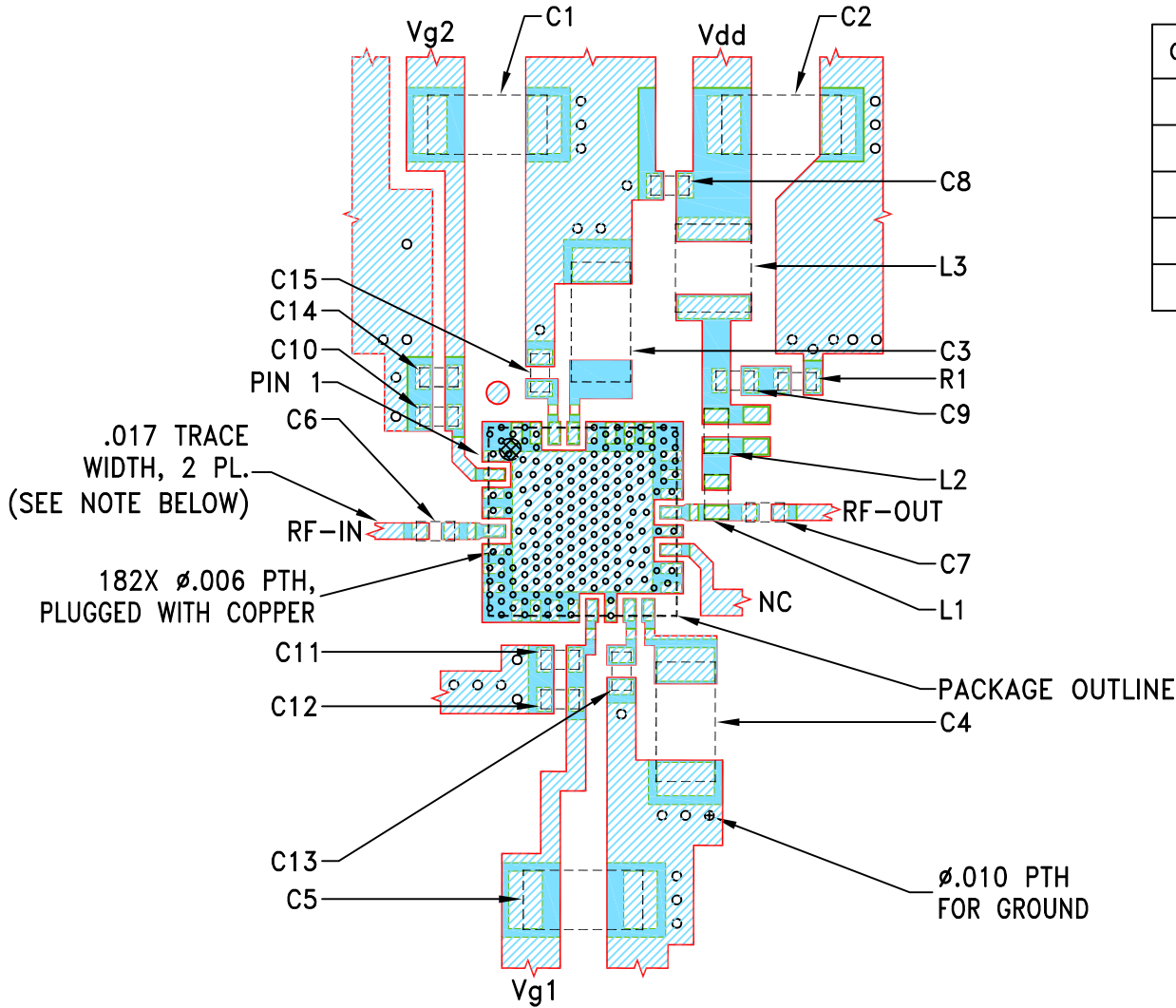
THIRD ANGLE PROJECTION



REVISIONS

REV	ECN No.	DESCRIPTION	DATE	DR	AUTH
OR	ECO-022462	NEW RELEASE	07/23/24	ITG	IL

SUGGESTED MOUNTING CONFIGURATION FOR DG1677-10 CASE STYLE



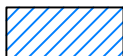
COMPONENT	SIZE
R1	0402
C1-C5	1206
C6-C15	0402
L1-L2	0402
L3	1008

NOTES:

- TRACE WIDTH IS SHOWN FOR ROGERS R04003C LoPro FOIL WITH DIELECTRIC THICKNESS .0087".  
COPPER: 1 OZ. EACH SIDE. FINAL COPPER THICKNESS SHALL BE 2 OZ.  
FOR OTHER MATERIALS TRACE WIDTH MAY NEED TO BE MODIFIED.
- CHIP COMPONENT FOOT PRINTS SHOWN FOR REFERENCE, FOR COMPONENT VALUES REFER TO TB-PMA5-63-2WC+.
- BOTTOM SIDE OF THE PCB IS CONTINUOUS GROUND PLANE.



DENOTES PCB COPPER LAYOUT WITH SMOBC (SOLDER MASK OVER BARE COPPER).



DENOTES COPPER LAND PATTERN FREE OF SOLDER MASK.

UNLESS OTHERWISE SPECIFIED	INITIALS	DATE
DIMENSIONS ARE IN INCHES	ITG	07/23/24
TOLERANCES ON:	GF	07/23/24
2 PL DECIMALS ±	IL	07/23/24
3 PL DECIMALS ± .005		
ANGLES ±		
FRACTIONS ±		



Mini-Circuits®

13 Neptune Avenue  
Brooklyn NY 11235

PL, DG1677-10, TB-PMA5-63-2WC+

SIZE	CODE IDENT	DRAWING NO:	REV:
A	15542	98-PL-789	OR
FILE:	98PL789	SCALE:	SHEET:
		5:1	1 OF 1

Mini-Circuits®  
THIS DOCUMENT AND ITS CONTENTS ARE THE PROPERTY OF MINI-CIRCUITS.  
EXCEPT FOR USE EXPRESSLY GRANTED, IN WRITING, TO ITS VENDORS, VENDEE  
AND THE UNITED STATES GOVERNMENT, MINI-CIRCUITS RESERVES ALL PROPRIETARY  
DESIGN, USE, MANUFACTURING AND REPRODUCTION RIGHTS THERETO.  
THESE CONTENTS SHALL NOT BE USED, DUPLICATED OR DISCLOSED TO ANY OUTSIDE  
PARTY, IN WHOLE OR IN PART, WITHOUT WRITTEN PERMISSION OF MINI-CIRCUITS.