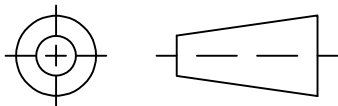


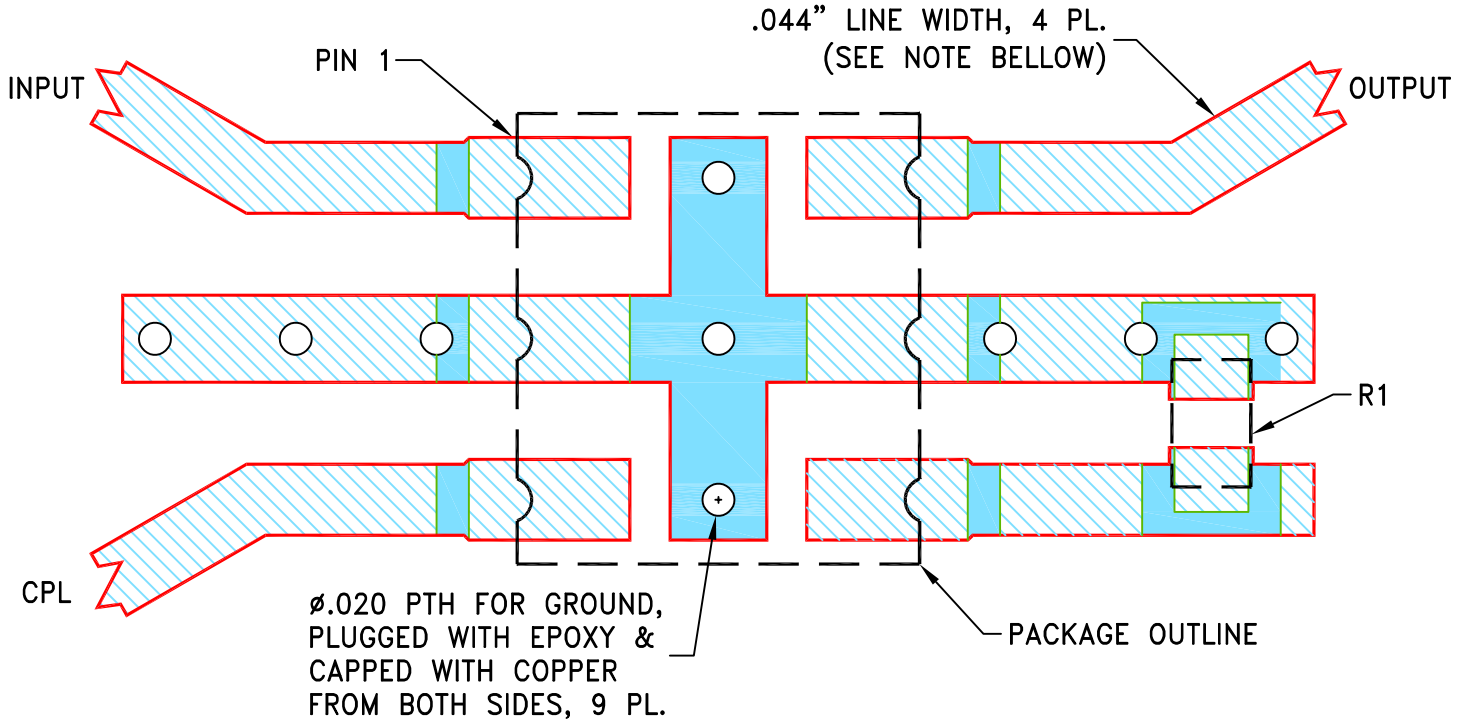
THIRD ANGLE PROJECTION



REVISIONS

REV	ECN No.	DESCRIPTION	DATE	DR	AUTH
OR	ECO-022146	NEW RELEASE	08/16/24	ITG	IL

SUGGESTED MOUNTING CONFIGURATION
FOR TT1491-10 CASE STYLE



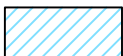
COMPONENT	SIZE
R1	0805

NOTES:

1. LINE WIDTH IS SHOWN FOR ROGERS R04350B, DIELECTRIC THICKNESS: $.020 \pm .0015$ ";
COPPER: 1/2 Oz EACH SIDE. FOR OTHER MATERIALS LINE WIDTH MAY NEED TO BE MODIFIED.
2. CHIP COMPONENT FOOT PRINTS SHOWN FOR REFERENCE. FOR COMPONENT VALUES REFER TO TB-RDC2092DC5W+.
3. BOTTOM SIDE OF THE PCB IS CONTINUOUS GROUND PLANE.

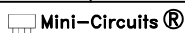


DENOTES PCB COPPER LAYOUT WITH SMOBC (SOLDER MASK OVER BARE COPPER).



DENOTES COPPER LAND PATTERN FREE OF SOLDER MASK.

UNLESS OTHERWISE SPECIFIED	INITIALS	DATE
DIMENSIONS ARE IN INCHES	ITG	08/16/24
TOLERANCES ON:	GF	08/16/24
2 PL DECIMALS ±	IL	08/16/24
3 PL DECIMALS ± .005		
ANGLES ±		
FRACTIONS ±		



THIS DOCUMENT AND ITS CONTENTS ARE THE PROPERTY OF MINI-CIRCUITS. EXCEPT FOR USE EXPRESSLY GRANTED, IN WRITING, TO ITS VENDORS, VENDEE AND THE UNITED STATES GOVERNMENT, MINI-CIRCUITS RESERVES ALL PROPRIETARY DESIGN, USE, MANUFACTURING AND REPRODUCTION RIGHTS THERETO. THESE CONTENTS SHALL NOT BE USED, DUPLICATED OR DISCLOSED TO ANY OUTSIDE PARTY, IN WHOLE OR IN PART, WITHOUT WRITTEN PERMISSION OF MINI-CIRCUITS.



Mini-Circuits®

13 Neptune Avenue
Brooklyn NY 11235

PL, TT1491-10, TB-RDC2092DC5W+

SIZE	CODE IDENT	DRAWING NO:	REV:
A	15542	98-PL-786	OR
FILE:	98PL786	SCALE: 8:1	SHEET: 1 OF 1