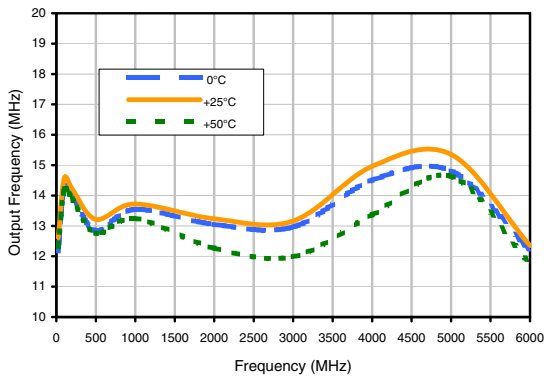
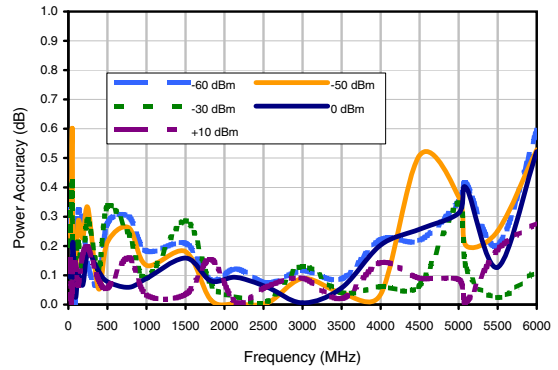


Typical Performance Data

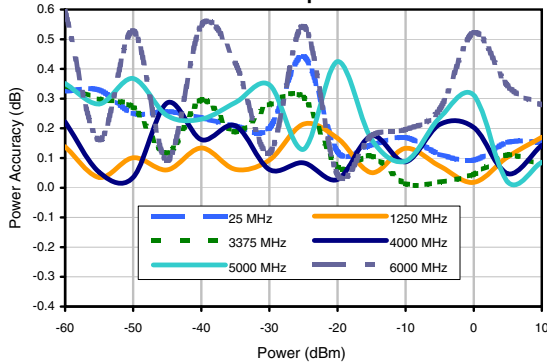
Max Power Output Vs Output Frequency



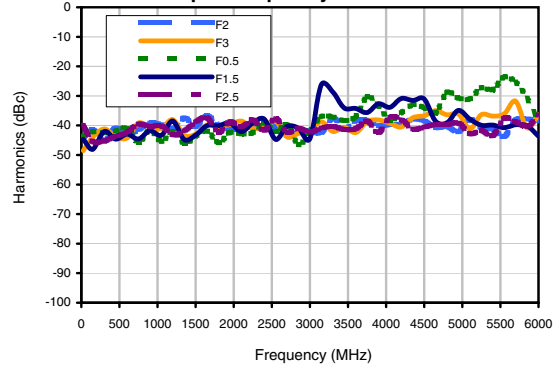
Power Deviation from Nominal Vs. Output Frequency



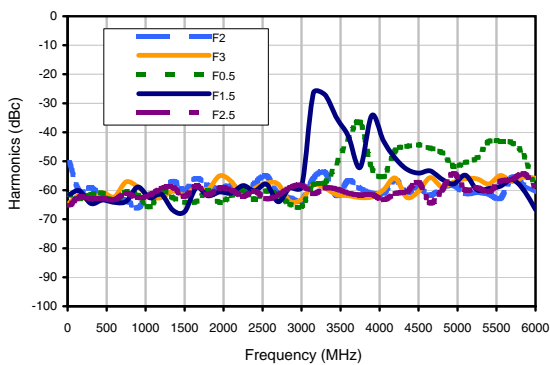
Power Deviation from Nominal Vs. Output Power



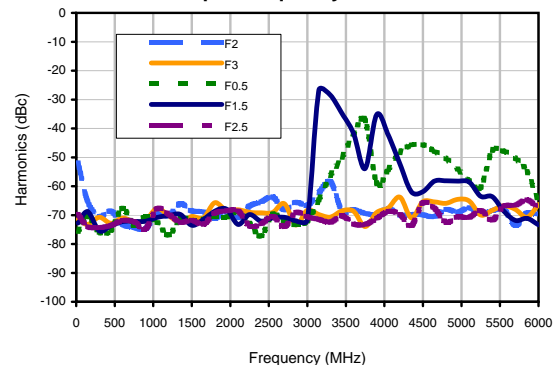
Harmonics & Sub-Harmonics Levels Vs. Output Frequency PWR=-50dBm



Harmonics & Sub-Harmonics Levels Vs. Output Frequency PWR=-30dBm



Harmonics & Sub-Harmonics Levels Vs. Output Frequency PWR=-20dBm



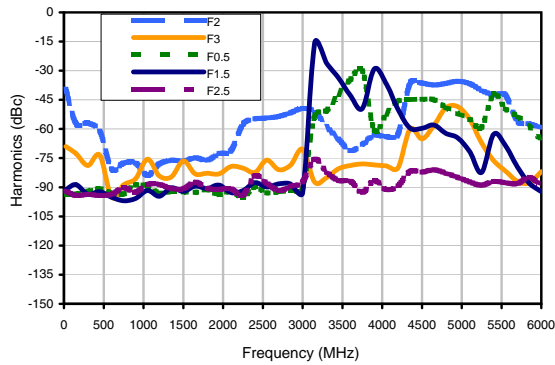
Notes

- A. Performance and quality attributes and conditions not expressly stated in this specification document are intended to be excluded and do not form a part of this specification document.
- B. Electrical specifications and performance data contained in this specification document are based on Mini-Circuits' applicable established test performance criteria and measurement instructions.
- C. The parts covered by this specification document are subject to Mini-Circuits' standard limited warranty and terms and conditions, collectively, "Standard Terms". Purchasers of this part are entitled to the rights and benefits contained therein. For a full statement of the Standard Terms and the exclusive rights and remedies thereunder, please visit Mini-Circuits' website at www.minicircuits.com/MC3Store/terms.jsp

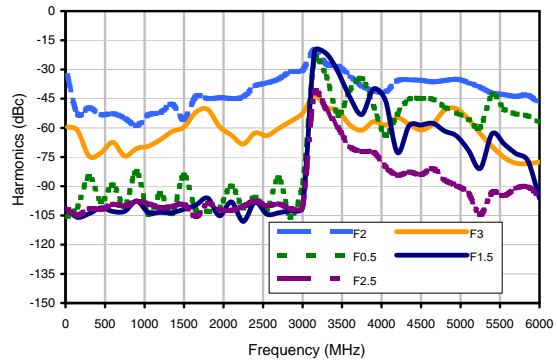


Typical Performance Data

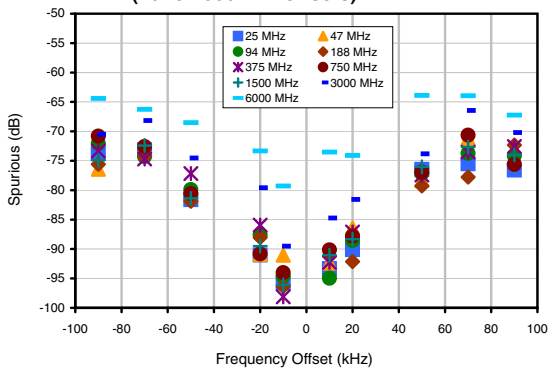
Harmonics & Sub-Harmonics Levels Vs. Output Frequency PWR=0dBmBm



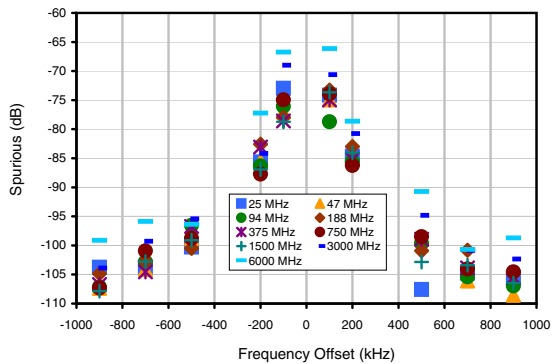
Harmonics & Sub-Harmonics Levels Vs. Output Frequency PWR=+10dBm



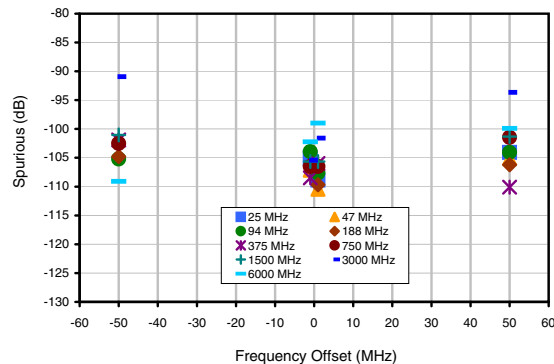
Spurious vs. Frequency Offset (10 to 1000 kHz offsets)



Spurious vs. Frequency Offset (100 to 1000 kHz offsets)



Spurious vs. Frequency Offset (1 & 50 MHz offsets)

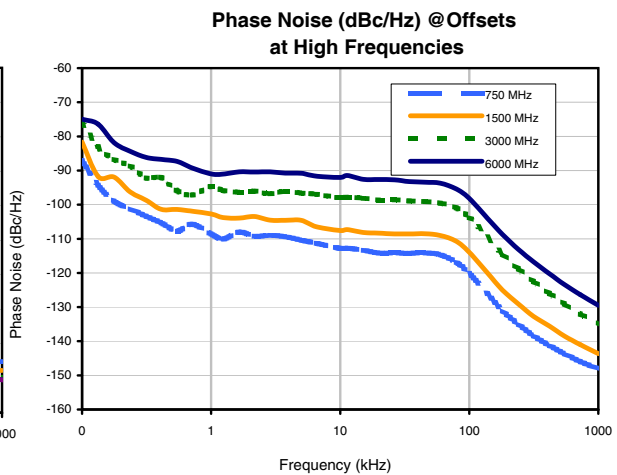
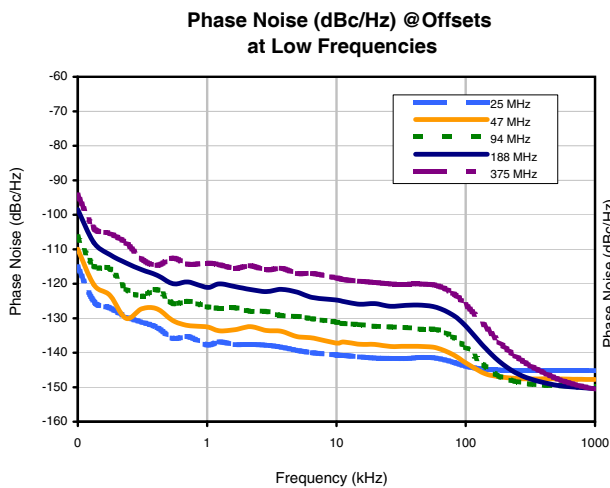
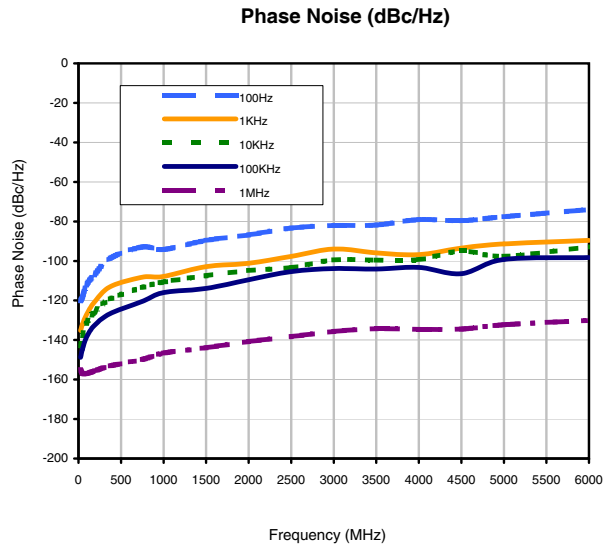


Notes

- A. Performance and quality attributes and conditions not expressly stated in this specification document are intended to be excluded and do not form a part of this specification document.
- B. Electrical specifications and performance data contained in this specification document are based on Mini-Circuits' applicable established test performance criteria and measurement instructions.
- C. The parts covered by this specification document are subject to Mini-Circuits' standard limited warranty and terms and conditions (collectively, "Standard Terms"). Purchasers of this part are entitled to the rights and benefits contained therein. For a full statement of the Standard Terms and the exclusive rights and remedies thereunder, please visit Mini-Circuits' website at www.minicircuits.com/MCISales/terms.jsp



Typical Performance Data



Notes

- A. Performance and quality attributes and conditions not expressly stated in this specification document are intended to be excluded and do not form a part of this specification document.
- B. Electrical specifications and performance data contained in this specification document are based on Mini-Circuits' applicable established test performance criteria and measurement instructions.
- C. The parts covered by this specification document are subject to Mini-Circuits' standard limited warranty and terms and conditions, collectively, "Standard Terms". Purchasers of this part are entitled to the rights and benefits contained therein. For a full statement of the Standard Terms and the exclusive rights and remedies thereunder, please visit Mini-Circuits' website at www.minicircuits.com/MC1Store/terms.jsp

