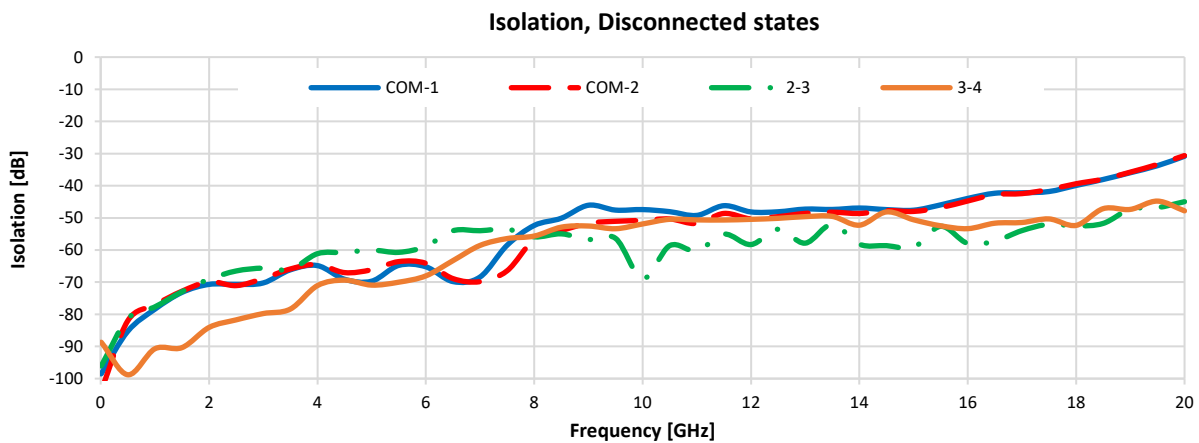
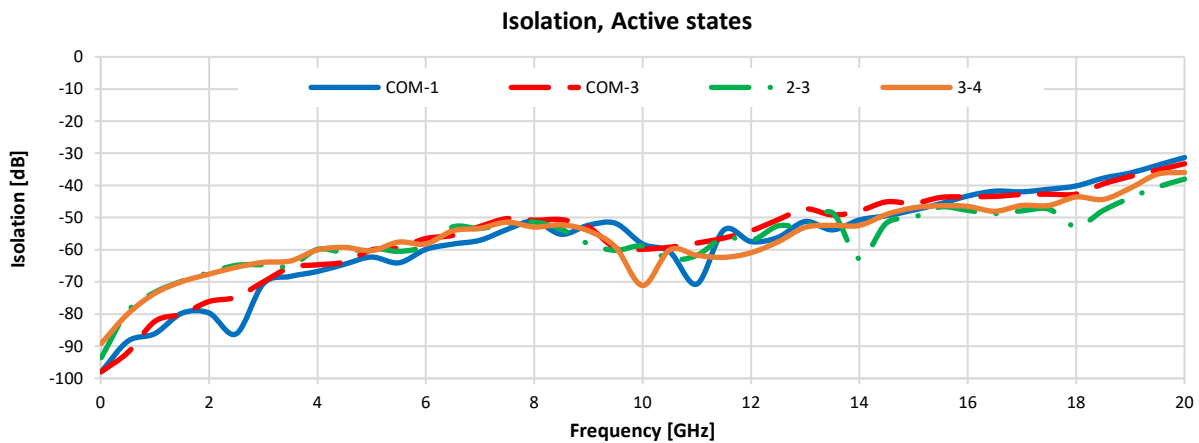


SP4T Switch

MEM-SP4T-A18

Typical Performance Graphs

Test Conditions: @ Temperature = -10°C, Pin = 0 dBm.

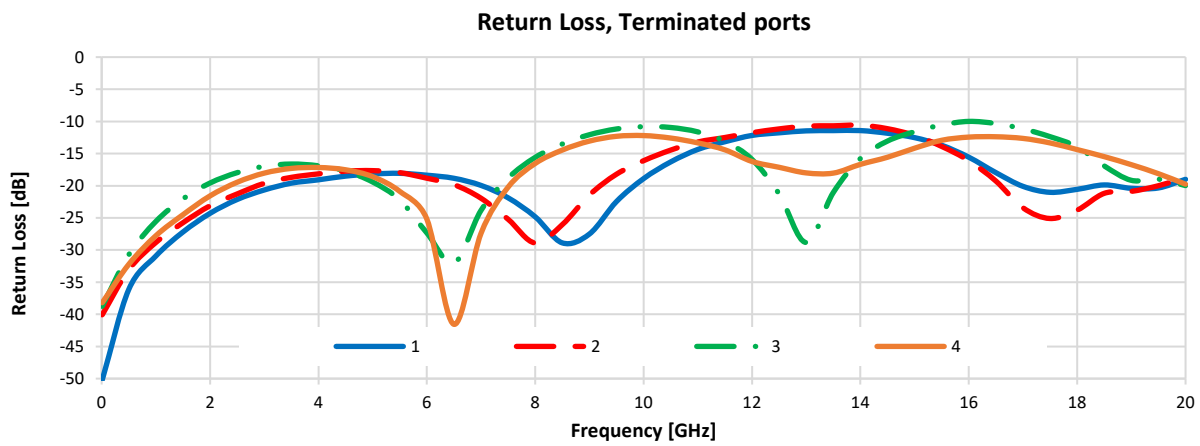
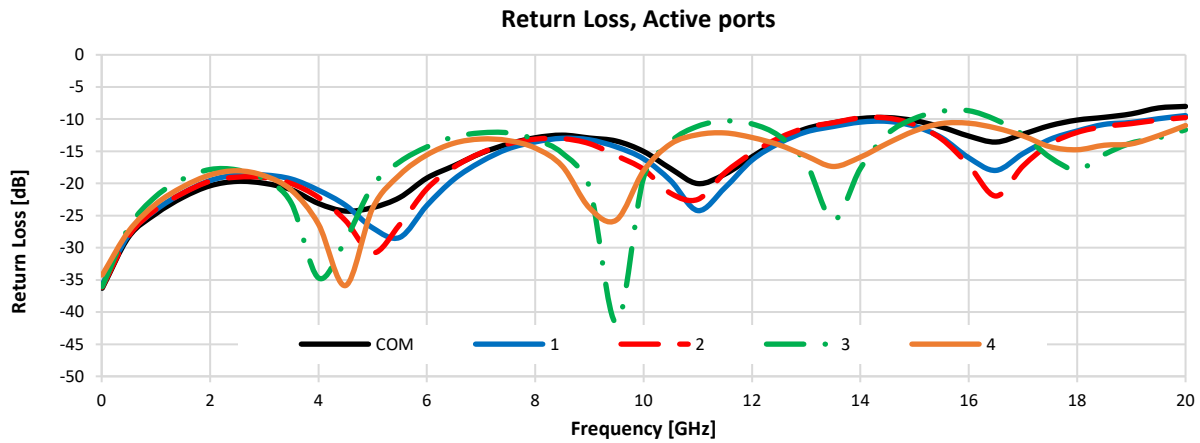


SP4T Switch

MEM-SP4T-A18

Typical Performance Graphs

Test Conditions: @ Temperature = -10°C, Pin = 0 dBm.

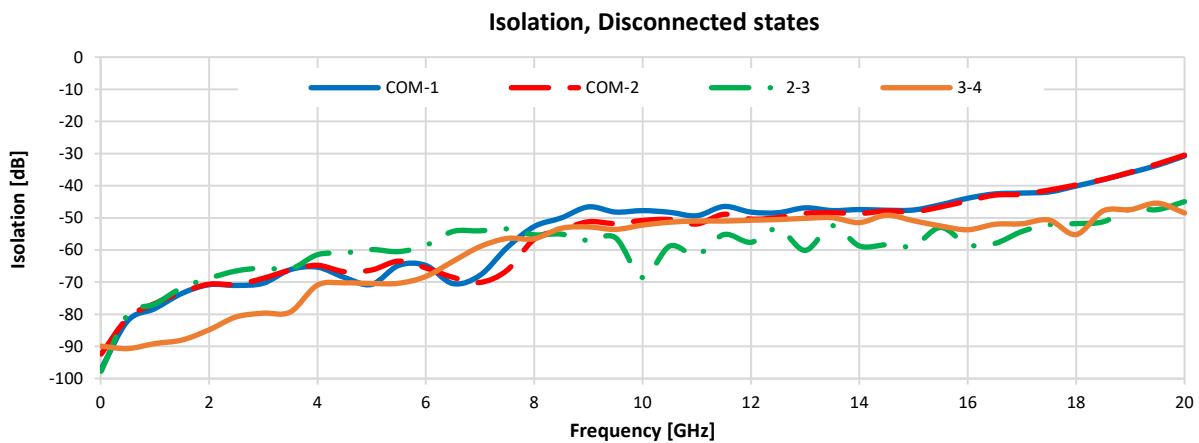
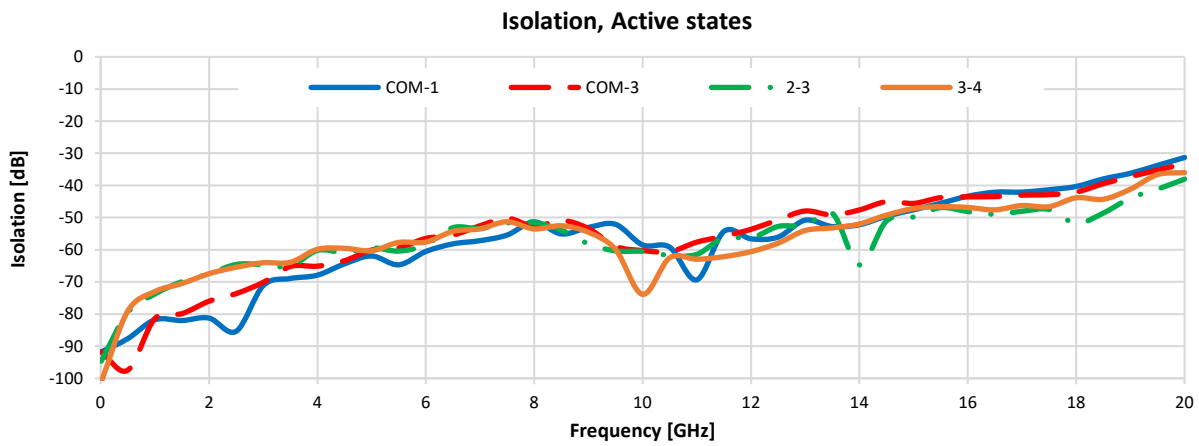


SP4T Switch

MEM-SP4T-A18

Typical Performance Graphs

Test Conditions: @ Temperature = +25°C, Pin = 0 dBm.

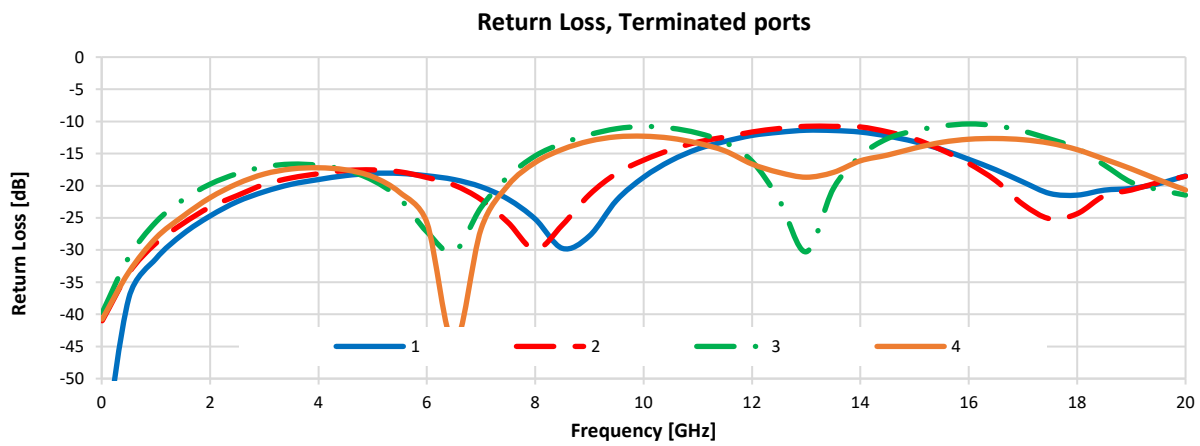
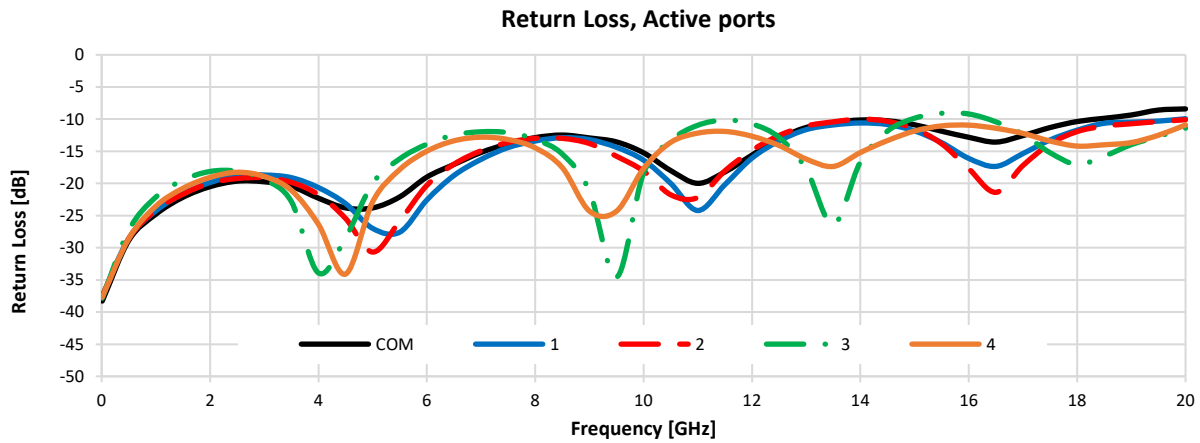


SP4T Switch

MEM-SP4T-A18

Typical Performance Graphs

Test Conditions: @ Temperature = +25°C, Pin = 0 dBm.

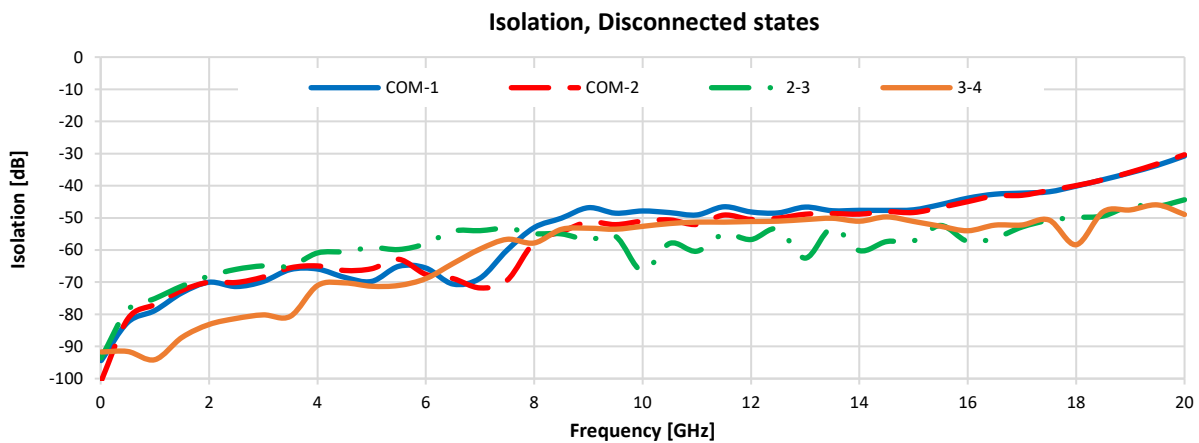
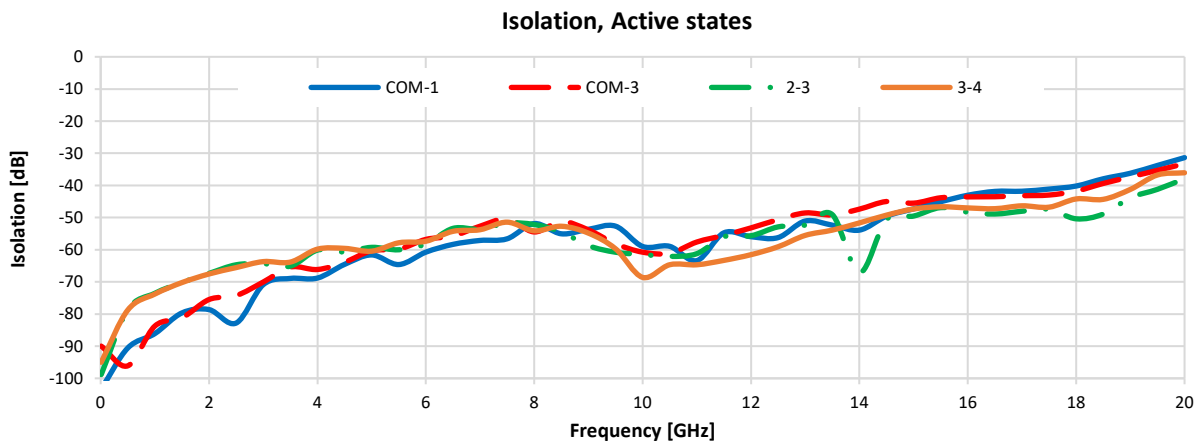
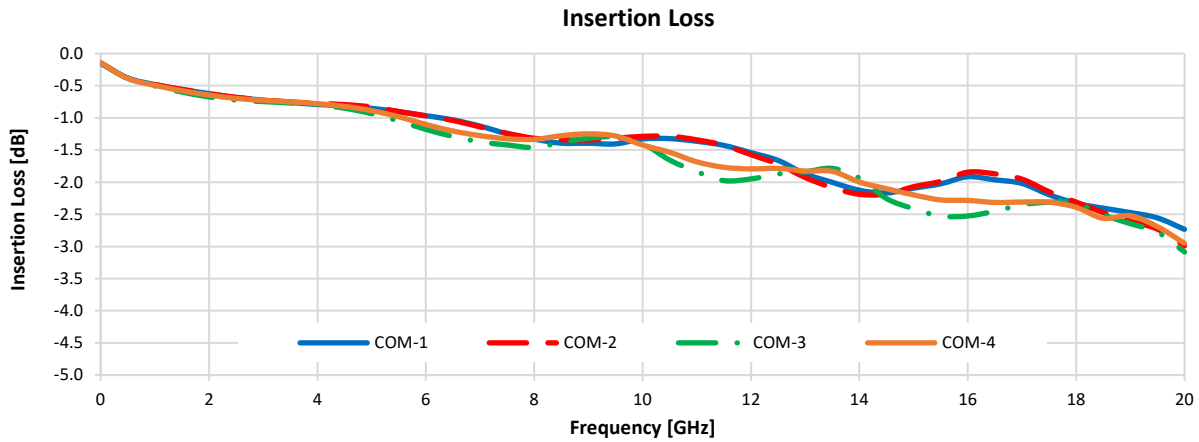


SP4T Switch

MEM-SP4T-A18

Typical Performance Graphs

Test Conditions: @ Temperature = +60°C, Pin = 0 dBm.



NOTES:

- A. Performance and quality attributes and conditions not expressly stated in this specification document are intended to be excluded and do not form a part of this specification document.
- B. Electrical specifications and performance data contained in this specification document are based on Mini-Circuit's applicable established test performance criteria and measurement instructions.
- C. The parts covered by this specification document are subject to Mini-Circuits standard limited warranty and terms and conditions (collectively, "Standard Terms"); Purchasers of this part are entitled to the rights and benefits contained therein. For a full statement of the Standard Terms and the exclusive rights and remedies thereunder, please visit Mini-Circuits' website at <https://www.minicircuits.com/terms/viewterm.html>

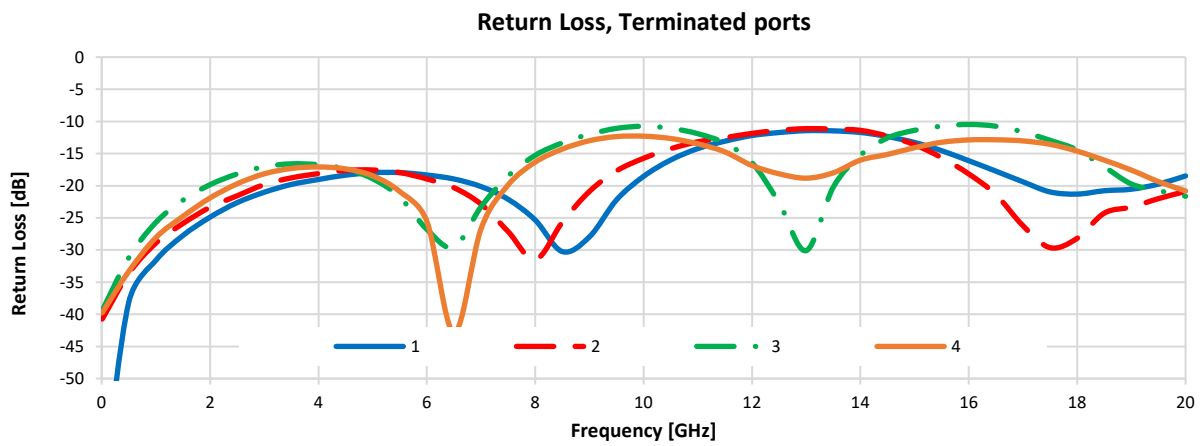
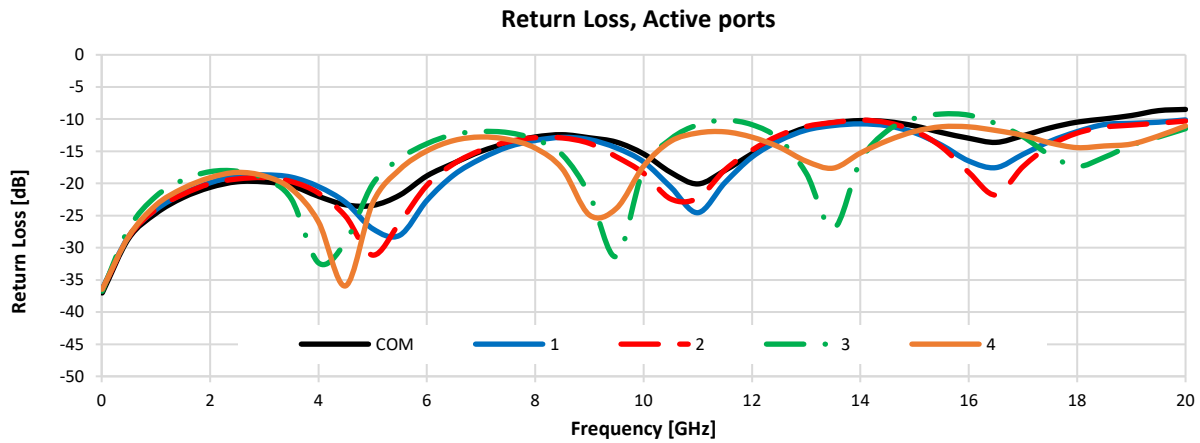


SP4T Switch

MEM-SP4T-A18

Typical Performance Graphs

Test Conditions: @ Temperature = +60°C, Pin = 0 dBm.



NOTES:

- A. Performance and quality attributes and conditions not expressly stated in this specification document are intended to be excluded and do not form a part of this specification document.
- B. Electrical specifications and performance data contained in this specification document are based on Mini-Circuits' applicable established test performance criteria and measurement instructions.
- C. The parts covered by this specification document are subject to Mini-Circuits standard limited warranty and terms and conditions (collectively, "Standard Terms"); Purchasers of this part are entitled to the rights and benefits contained therein. For a full statement of the Standard Terms and the exclusive rights and remedies thereunder, please visit Mini-Circuits' website at <https://www.minicircuits.com/terms/viewterm.html>

