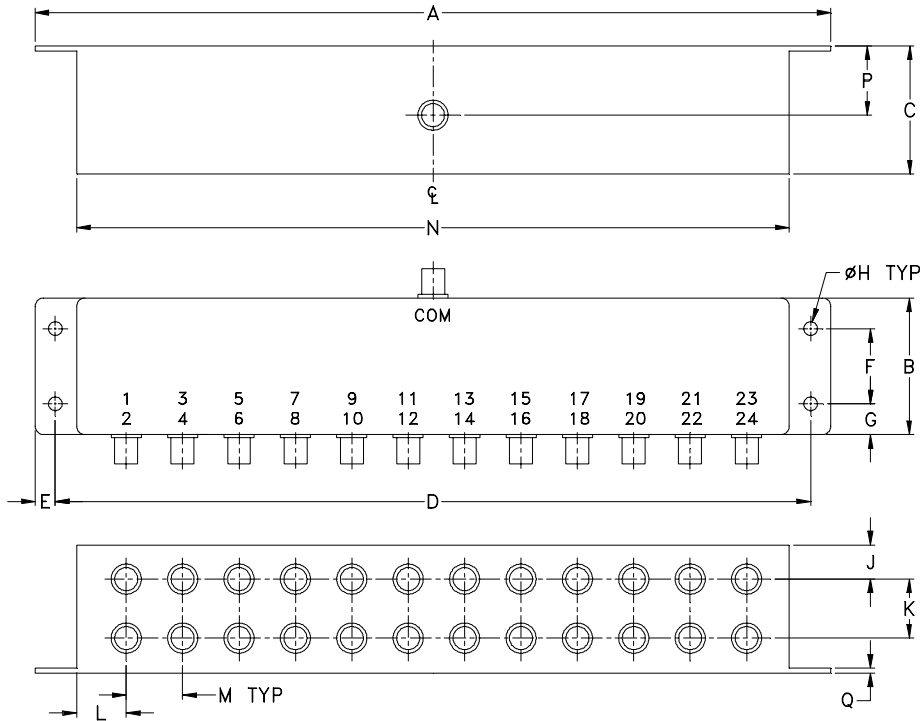


### Outline Dimensions



CASE#	A	B	C	D	E	F	G	H	J	K	L	M	N
R31	9.31 (236.47)	1.60 (40.64)	1.50 (38.10)	8.84 (224.54)	.24 (6.10)	.88 (22.35)	.36 (9.14)	.160 (4.06)	.40 (10.16)	.69 (17.53)	.54 (13.72)	.66 (16.76)	8.34 (211.84)

CASE#	P	Q	WT. GRAMS
R31	.81 (20.57)	.06 (1.53)	490.0

Dimensions are in inches (mm). Tolerances: 2 Pl.  $\pm .03$ ; 3 Pl.  $\pm .015$

#### Notes:

- Case material: Aluminum alloy.
- Case finish:  
For RoHS Case Styles: Clear chemical conversion coating, non-chrome or trivalent chrome based.



INTERNET <http://www.minicircuits.com>

P.O. Box 350166, Brooklyn, New York 11235-0003 (718) 934-4500 Fax (718) 332-4661

Distribution Centers NORTH AMERICA 800-654-7949 • 417-335-5935 • Fax 417-335-5945 • EUROPE 44-1252-832600 • Fax 44-1252-837010

Mini-Circuits ISO 9001 & ISO 14001 Certified