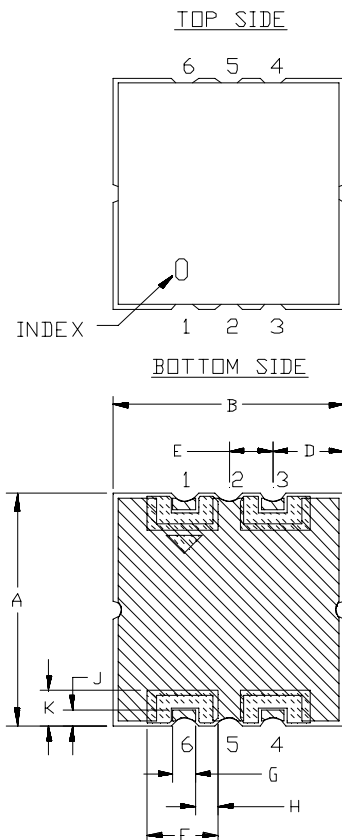
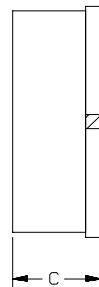


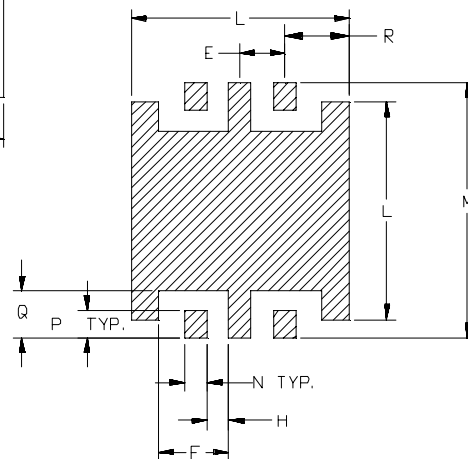
Outline Dimensions



SIDE VIEW



PCB Land Pattern



Suggested Layout

 METALLIZATION
 SOLDER RESIST

CASE #	A	B	C	D	E	F	G	H	J	K	L	M	N	P
HE1135	.394 (10.01)	.394 (10.01)	.150 (3.81)	.122 (3.10)	.075 (1.90)	.120 (3.05)	.038 (0.97)	.037 (0.94)	.026 (0.66)	.061 (1.55)	.370 (9.40)	.434 (11.02)	.038 (0.97)	.046 (1.17)

CASE #	Q	R	WT. GRAMS
HE1135	.081 (2.06)	.110 (2.79)	0.7

Dimensions are in inches (mm). Tolerances: 2 Pl. $\pm .03$; 3 Pl. $\pm .015$

Notes:

- Case material: Nickel-Silver alloy.
- Base: Printed wiring laminate.
- Termination finish:
 For RoHS Case Styles: 3-5 μ inch (.08-.13 microns) Gold over 120-240 μ inch (3.05-6.10 microns) Nickel plate.
 For RoHS-5 Case Styles: Tin-Lead plate.



 ISO 9001 ISO 14001 CERTIFIED

ALL NEW
minicircuits.com

P.O. Box 350166, Brooklyn, New York 11235-0003 (718) 934-4500 Fax (718) 332-4661 For detailed performance specs & shopping online see Mini-Circuits web site



The Design Engineers Search Engine Provides ACTUAL Data Instantly From MINI-CIRCUITS At: www.minicircuits.com

RF/IF MICROWAVE COMPONENTS