

Coaxial

Power Splitter/Combiner

2 Way-90° 50Ω 2000 to 4200 MHz

ZAPDQ-4+



Generic photo used for illustration purposes only
CASE STYLE: F14

Connectors	Model
N-TYPE	ZAPDQ-4-N+
SMA	ZAPDQ-4-S+

+RoHS Compliant
The +Suffix identifies RoHS Compliance. See our web site for RoHS Compliance methodologies and qualifications

Maximum Ratings

Operating Temperature	-55°C to 100°C
Storage Temperature	-55°C to 100°C
Power Input (as a splitter)	1W max.
Internal Dissipation	0.125W max.

Permanent damage may occur if any of these limits are exceeded.

Pin Connections

SUM PORT	S
PORT 1 (0°)	1
PORT 2 (+90°)	3

Features

- wideband, 2000 to 4200 MHz
- low insertion loss, 0.4 dB typ.
- good isolation, 22 dB typ.
- rugged shielded case

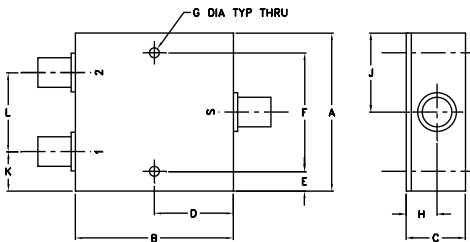
Applications

- balanced amplifiers
- modulators
- test set-ups

Electrical Specifications

Parameter	Frequency (MHz)	Min.	Typ.	Max.	Unit
Frequency		2000		4200	MHz
Insertion Loss (above theoretical 3 dB)	2000 - 4200	—	0.4	0.9	dB
Isolation	2000 - 4200	16	22	—	dB
Phase Unbalance	2000 - 4200	—	5	8	Degree
Amplitude Unbalance	2000 - 4200	—	—	1.0	dB
VSWR (Port S)	2000 - 4200	—	1.25	—	:1
VSWR (Port 1, 2)	2000 - 4200	—	1.35	—	:1

Outline Drawing



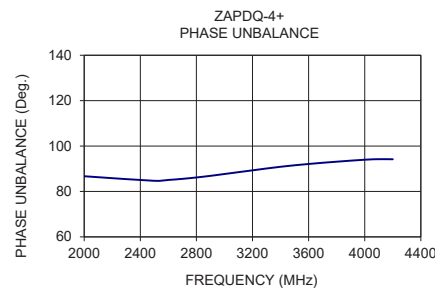
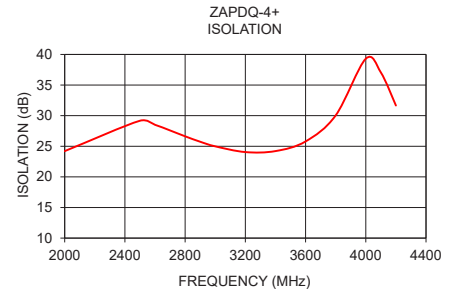
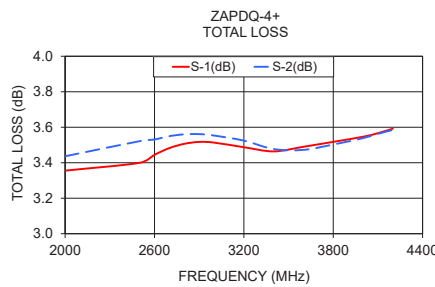
Outline Dimensions (inch/mm)

A	B	C	D	E	F	G	
2.00	2.00	0.75	1.00	0.25	1.500	0.125	
50.80	50.80	19.05	25.40	6.35	38.10	3.18	
H	J	K	L				wt
0.39	1.00	0.50	1.00				grams
9.91	25.40	12.70	25.40				170.0

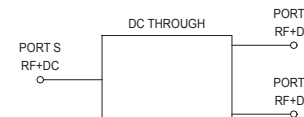
Typical Performance Data

Frequency (MHz)	Total Loss ¹ (dB)		Amplitude Unbalance (dB)	Isolation (dB)	Phase Unbalance (deg.)	VSWR S	VSWR 1	VSWR 2
	S-1	S-2						
2000	3.36	3.44	0.08	24.21	86.71	1.30	1.12	1.14
2500	3.40	3.52	0.12	29.17	84.70	1.19	1.12	1.41
2600	3.44	3.53	0.09	28.51	85.08	1.26	1.11	1.45
2700	3.48	3.55	0.07	27.59	85.56	1.31	1.10	1.46
2800	3.51	3.56	0.05	26.63	86.18	1.33	1.08	1.44
2900	3.52	3.56	0.04	25.74	86.89	1.33	1.07	1.41
3000	3.51	3.55	0.04	24.99	87.70	1.31	1.05	1.38
3200	3.49	3.52	0.04	24.05	89.31	1.22	1.03	1.28
3400	3.46	3.48	0.01	24.21	90.88	1.11	1.07	1.16
3600	3.49	3.47	0.02	25.79	92.11	1.02	1.14	1.09
3800	3.52	3.50	0.02	30.04	93.12	1.07	1.20	1.05
4000	3.55	3.54	0.01	39.30	93.99	1.09	1.24	1.08
4100	3.57	3.56	0.00	37.06	94.22	1.09	1.25	1.11
4200	3.59	3.58	0.01	31.66	94.19	1.07	1.28	1.15

1. Total Loss = Insertion Loss + 3dB splitter loss.



electrical schematic



Notes

- A. Performance and quality attributes and conditions not expressly stated in this specification document are intended to be excluded and do not form a part of this specification document.
 B. Electrical specifications and performance data contained in this specification document are based on Mini-Circuits' applicable established test performance criteria and measurement instructions.
 C. The parts covered by this specification document are subject to Mini-Circuits standard limited warranty and terms and conditions (collectively, "Standard Terms"); Purchasers of this part are entitled to the rights and benefits contained therein. For a full statement of the Standard Terms and the exclusive rights and remedies thereunder, please visit Mini-Circuits' website at www.minicircuits.com/MCLStore/terms.jsp

REV. OR
M164029
ED17080901
ZAPDQ-4+
YL/CP/AM
200610



2 Way-0° Power Splitter/Combiner

ZAPDQ-4+

Typical Performance Data

FREQUENCY (MHz)	TOTAL LOSS ¹ (dB)		AMPLITUDE UNBALANCE (dB)	ISOLATION (dB) 1-2	PHASE UNBALANCE (deg.)	FREQUENCY (MHz)	VSWR (:1)		
	S-1	S-2					S	1	2
1500	2.80	4.96	2.15	17.85	104.18	1500	1.43	1.02	3.40
1600	3.09	4.36	1.27	18.52	100.32	1600	1.50	1.04	2.57
1700	3.29	3.94	0.65	19.52	96.10	1700	1.52	1.06	2.01
1800	3.37	3.68	0.30	20.83	92.16	1800	1.48	1.09	1.62
1900	3.38	3.52	0.14	22.44	88.99	1900	1.40	1.11	1.34
2000	3.36	3.44	0.08	24.21	86.71	2000	1.30	1.12	1.14
2100	3.33	3.41	0.08	26.06	85.24	2100	1.18	1.13	1.02
2200	3.31	3.41	0.10	27.77	84.39	2200	1.08	1.14	1.13
2300	3.33	3.45	0.13	29.05	84.04	2300	1.04	1.13	1.23
2400	3.35	3.51	0.16	29.47	84.21	2400	1.11	1.13	1.33
2500	3.40	3.52	0.12	29.17	84.70	2500	1.19	1.12	1.41
2600	3.44	3.53	0.09	28.51	85.08	2600	1.26	1.11	1.45
2700	3.48	3.55	0.07	27.59	85.56	2700	1.31	1.10	1.46
2800	3.51	3.56	0.05	26.63	86.18	2800	1.33	1.08	1.44
2900	3.52	3.56	0.04	25.74	86.89	2900	1.33	1.07	1.41
3000	3.51	3.55	0.04	24.99	87.70	3000	1.31	1.05	1.38
3100	3.50	3.54	0.04	24.39	88.50	3100	1.27	1.04	1.33
3200	3.49	3.52	0.04	24.05	89.31	3200	1.22	1.03	1.28
3300	3.47	3.50	0.03	23.97	90.12	3300	1.17	1.04	1.22
3400	3.46	3.48	0.01	24.21	90.88	3400	1.11	1.07	1.16
3500	3.47	3.47	0.00	24.76	91.56	3500	1.06	1.10	1.12
3600	3.49	3.47	0.02	25.79	92.11	3600	1.02	1.14	1.09
3700	3.51	3.49	0.02	27.40	92.61	3700	1.03	1.18	1.07
3800	3.52	3.50	0.02	30.04	93.12	3800	1.07	1.20	1.05
3900	3.53	3.52	0.01	33.92	93.62	3900	1.09	1.22	1.06
4000	3.55	3.54	0.01	39.30	93.99	4000	1.09	1.24	1.08
4100	3.57	3.56	0.00	37.06	94.22	4100	1.09	1.25	1.11
4200	3.59	3.58	0.01	31.66	94.19	4200	1.07	1.28	1.15
4300	3.63	3.62	0.01	28.04	93.78	4300	1.07	1.31	1.21
4400	3.67	3.68	0.01	25.39	92.84	4400	1.07	1.37	1.30
4500	3.72	3.78	0.05	23.39	91.25	4500	1.08	1.44	1.42
4600	3.76	3.93	0.17	21.79	88.93	4600	1.09	1.54	1.57
4700	3.76	4.17	0.41	20.52	85.84	4700	1.08	1.64	1.79
4800	3.70	4.53	0.83	19.51	82.25	4800	1.09	1.76	2.10
4900	3.59	5.06	1.47	18.79	78.42	4900	1.15	1.88	2.59
5000	3.45	5.84	2.39	18.37	74.85	5000	1.28	2.00	3.36

¹Total Loss = Insertion Loss + 3dB Splitter Loss



P.O. Box 350166, Brooklyn, New York 11235-0003 (718) 934-4500 • Fax (718) 332-4661 For detailed performance specs & shopping online see Mini-Circuits web site
 The Design Engineers Search Engine Provides ACTUAL Data Instantly From MINI-CIRCUITS At: www.minicircuits.com



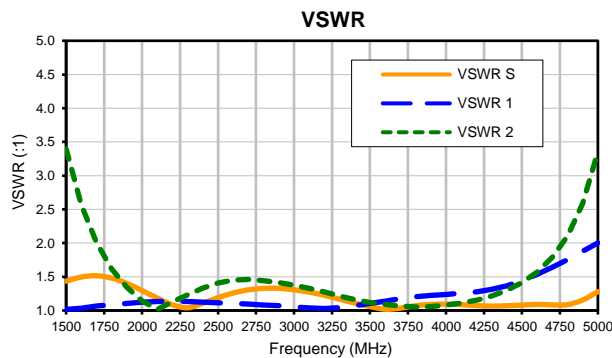
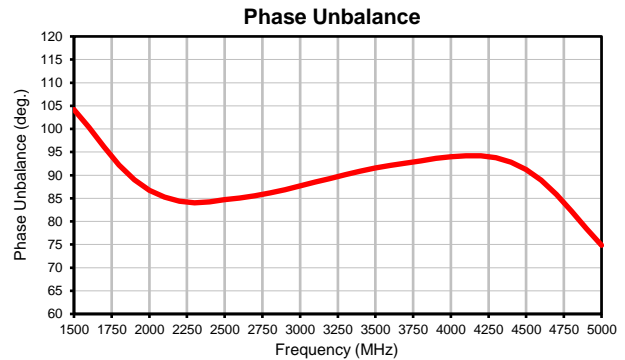
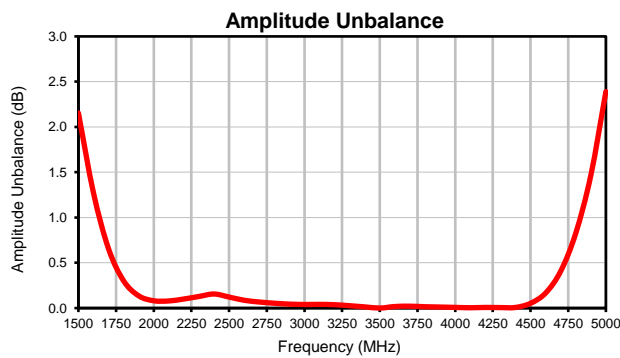
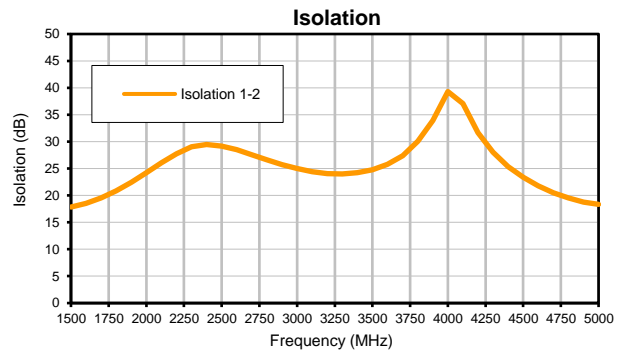
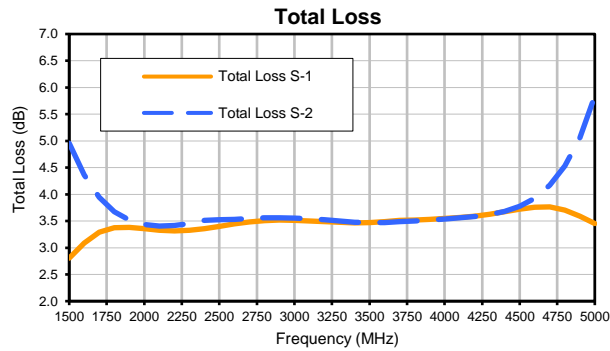
IF/RF MICROWAVE COMPONENTS

REV. OR
 ZAPDQ-4+
 2/20/2018
 Page 1 of 1

2 Way-0° Power Splitter/Combiner

ZAPDQ-4+

Typical Performance Curves



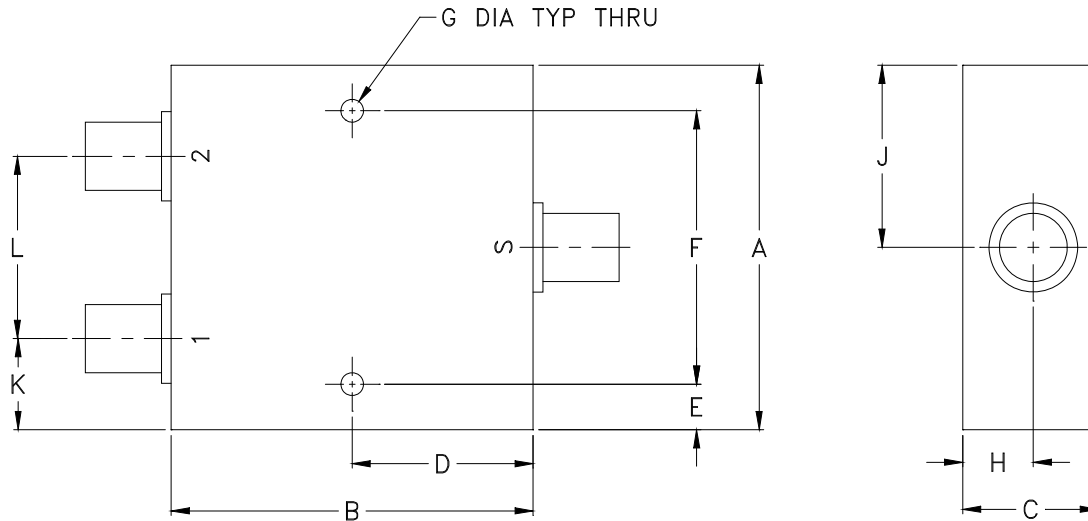
P.O. Box 350166, Brooklyn, New York 11235-0003 (718) 934-4500 • Fax (718) 332-4661 For detailed performance specs & shopping online see Mini-Circuits web site
The Design Engineers Search Engine Provides ACTUAL Data Instantly From MINI-CIRCUITS At: www.minicircuits.com



IF/RF MICROWAVE COMPONENTS

REV. OR
ZAPDQ-4+
2/20/2018
Page 1 of 1

Outline Dimensions



CASE #	A	B	C	D	E	F	G	H	J	K	L	WT. GRAM
F14	2.00 (50.80)	2.00 (50.80)	.75 (19.05)	1.00 (25.40)	.25 (6.35)	1.500 (38.10)	.125 (3.18)	.39 (9.91)	1.00 (25.40)	.50 (12.70)	1.00 (25.40)	170.0

Dimensions are in inches (mm). Tolerances: 2Pl. $\pm .03$; 3Pl. $\pm .015$

Notes:

- Case material: Aluminum alloy.
- Case finish:
For RoHS Case Styles: Clear chemical conversion coating, non-chrome or trivalent chrome based.
- Refer to the individual model data sheet for the type of connectors available.



INTERNET <http://www.minicircuits.com>

P.O. Box 350166, Brooklyn, New York 11235-0003 (718) 934-4500 Fax (718) 332-4661

Distribution Centers NORTH AMERICA 800-654-7949 • 417-335-5935 • Fax 417-335-5945 • EUROPE 44-1252-832600 • Fax 44-1252-837010

Mini-Circuits ISO 9001 & ISO 14001 Certified

All Mini-Circuits products are manufactured under exacting quality assurance and control standards, and are capable of meeting published specifications after being subjected to any or all of the following physical and environmental test.

Specification	Test/Inspection Condition	Reference/Spec
Operating Temperature	-55° to 100°C Ambient Environment	Individual Model Data Sheet
Storage Temperature	-55° to 100° C Ambient Environment	Individual Model Data Sheet
Barometric Pressure	100,000 Feet	MIL-STD-202, Method 105, Condition D
Humidity	90% RH, 65°C Units may require bake-out after humidity to restore full performance.	MIL-STD-202, Method 103
Thermal Shock	-65° to 125°C, 5 cycles	MIL-STD-202, Method 107, Condition B
Vibration (High Frequency)	20g peak, 10-2000 Hz, 12 times in each of three perpendicular directions (total 36)	MIL-STD-202, Method 204, Condition D
Mechanical Shock	100g, 6ms sawtooth, 3 shocks each direction 3 axes (total 18)	MIL-STD-202, Method 213, Condition I