

Coaxial

Power Splitter/Combiner

ZAPD-30-S+

2 Way-0° 50Ω 20 to 3000 MHz



Generic photo used for illustration purposes only

CASE STYLE: F14

Connectors Model
SMA ZAPD-30-S+

+RoHS Compliant

The +Suffix identifies RoHS Compliance. See our web site for RoHS Compliance methodologies and qualifications

Maximum Ratings

Operating Temperature	-55°C to 100°C
Storage Temperature	-55°C to 100°C
Power Input (as a splitter)	1W max.
Internal Dissipation	0.125W max.

Permanent damage may occur if any of these limits are exceeded.

Coaxial Connections

SUM PORT	S
PORT 1	1
PORT 2	2

Features

- wideband, 20 to 3000 MHz
- excellent amplitude unbalance, 0.1 dB typ.
- excellent phase unbalance, 1 deg. typ.

Applications

- UHF TV/DVT
- aircraft radio navigation
- PCS/cellular/GSM

Electrical Specifications

FREQ. RANGE (MHz)	ISOLATION (dB)						INSERTION LOSS (dB) ABOVE 3.0 dB						PHASE UNBALANCE (Degrees)			AMPLITUDE UNBALANCE (dB)			VSWR (:1)			
	L		M		U		L		M		U		L	M	U	L	M	U	S		OUT	
	Typ.	Min.	Typ.	Min.	Typ.	Min.	Typ.	Max.	Typ.	Max.	Typ.	Max.	Max.	Max.	Max.	Max.	Max.	Max.	Typ.	Max.	Typ.	Max.
20-3000	14	12	16	12	20	14	1.1	1.5	1.1	1.8	1.4	2.3	3	5	9	0.3	0.4	0.8	1.5	1.95	1.55	2.1

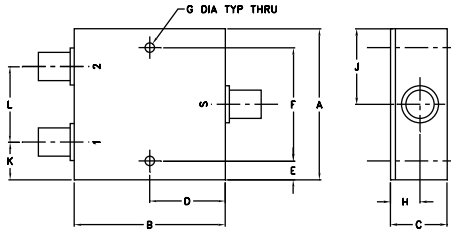
L = 20-200 MHz M = 200-1500 MHz U = 1500-3000 MHz

Typical Performance Data

Frequency (MHz)	Total Loss ¹ (dB)		Amplitude Unbalance (dB)	Isolation (dB)	Phase Unbalance (deg.)	VSWR S	VSWR 1	VSWR 2
	S-1	S-2						
20.00	4.06	4.08	0.02	15.35	0.01	1.68	1.52	1.52
40.00	4.06	4.08	0.02	14.99	0.03	1.67	1.49	1.49
60.00	4.07	4.09	0.02	14.75	0.04	1.66	1.48	1.48
80.00	4.07	4.09	0.02	14.64	0.05	1.67	1.47	1.47
100.00	4.08	4.10	0.02	14.57	0.04	1.67	1.46	1.46
400.00	4.08	4.10	0.02	14.77	0.22	1.65	1.48	1.47
600.00	4.07	4.09	0.03	15.14	0.30	1.63	1.51	1.49
800.00	4.07	4.10	0.03	15.62	0.34	1.61	1.54	1.52
1000.00	4.07	4.10	0.03	16.24	0.48	1.60	1.57	1.56
1400.00	4.12	4.16	0.04	17.85	0.61	1.54	1.64	1.63
1800.00	4.18	4.25	0.07	19.60	0.66	1.47	1.67	1.70
2000.00	4.21	4.30	0.09	20.27	0.71	1.44	1.65	1.71
2400.00	4.29	4.45	0.17	20.63	0.92	1.38	1.62	1.73
2800.00	4.37	4.62	0.25	19.58	1.43	1.33	1.67	1.84
3000.00	4.47	4.76	0.28	18.76	1.80	1.32	1.73	1.93

1. Total Loss = Insertion Loss + 3dB splitter loss.

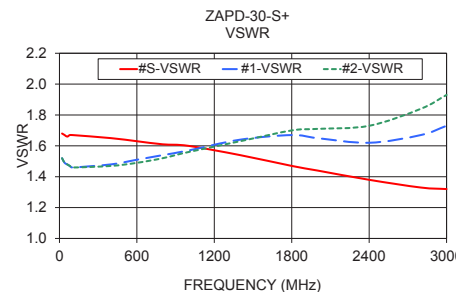
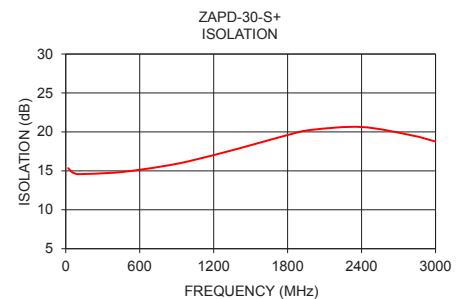
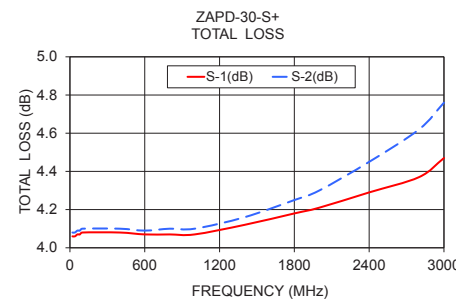
Outline Drawing



Outline Dimensions (inch/mm)

A	B	C	D	E	F	G
2.00	2.00	0.75	1.00	0.25	1.500	0.125
50.80	50.80	19.05	25.40	6.35	38.10	3.18

H	J	K	L	wt
0.39	1.00	0.50	1.00	grams
9.91	25.40	12.70	25.40	170.0



electrical schematic



Notes

- A. Performance and quality attributes and conditions not expressly stated in this specification document are intended to be excluded and do not form a part of this specification document.
 B. Electrical specifications and performance data contained in this specification document are based on Mini-Circuit's applicable established test performance criteria and measurement instructions.
 C. The parts covered by this specification document are subject to Mini-Circuits standard limited warranty and terms and conditions (collectively, "Standard Terms"); Purchasers of this part are entitled to the rights and benefits contained therein. For a full statement of the Standard Terms and the exclusive rights and remedies thereunder, please visit Mini-Circuits' website at www.minicircuits.com/MCLStore/terms.jsp

REV. D
M175652
ZAPD-30-S+
HY/TD/CP/AM
200610



2 Way-0° Power Splitter/Combiner

ZAPD-30+

Typical Performance Data

FREQUENCY (MHz)	TOTAL LOSS ¹ (dB)		AMPLITUDE UNBALANCE (dB)	ISOLATION (dB)	PHASE UNBALANCE (deg.)	FREQUENCY (MHz)	VSWR (:1)		
	S-1	S-2					S	1	2
	20.0	4.06					4.08	0.02	15.35
40.0	4.06	4.08	0.02	14.99	0.03	40.0	1.67	1.49	1.49
60.0	4.07	4.09	0.02	14.75	0.04	60.0	1.66	1.48	1.48
80.0	4.07	4.09	0.02	14.64	0.05	80.0	1.67	1.47	1.47
100.0	4.08	4.10	0.02	14.57	0.04	100.0	1.67	1.46	1.46
400.0	4.08	4.10	0.02	14.77	0.22	400.0	1.65	1.48	1.47
600.0	4.07	4.09	0.03	15.14	0.30	600.0	1.63	1.51	1.49
800.0	4.07	4.10	0.03	15.62	0.34	800.0	1.61	1.54	1.52
1000.0	4.07	4.10	0.03	16.24	0.48	1000.0	1.60	1.57	1.56
1400.0	4.12	4.16	0.04	17.85	0.61	1400.0	1.54	1.64	1.63
1800.0	4.18	4.25	0.07	19.60	0.66	1800.0	1.47	1.67	1.70
2000.0	4.21	4.30	0.09	20.27	0.71	2000.0	1.44	1.65	1.71
2400.0	4.29	4.45	0.17	20.63	0.92	2400.0	1.38	1.62	1.73
2800.0	4.37	4.62	0.25	19.58	1.43	2800.0	1.33	1.67	1.84
3000.0	4.47	4.76	0.28	18.76	1.80	3000.0	1.32	1.73	1.93

¹Total Loss = Insertion Loss + 3dB Splitter Loss



P.O. Box 350166, Brooklyn, New York 11235-0003 (718) 934-4500 • Fax (718) 332-4661 For detailed performance specs & shopping online see Mini-Circuits web site www.minicircuits.com



The Design Engineers Search Engine Provides ACTUAL Data Instantly From MINI-CIRCUITS At: www.minicircuits.com

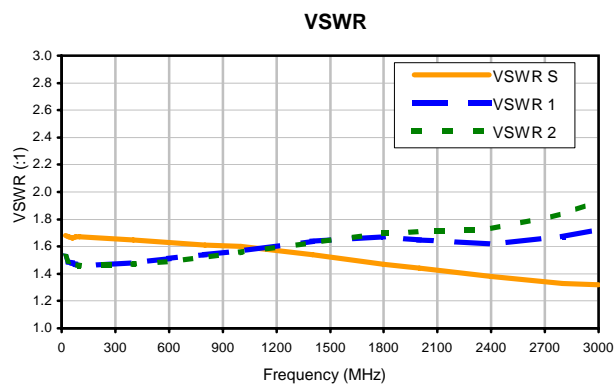
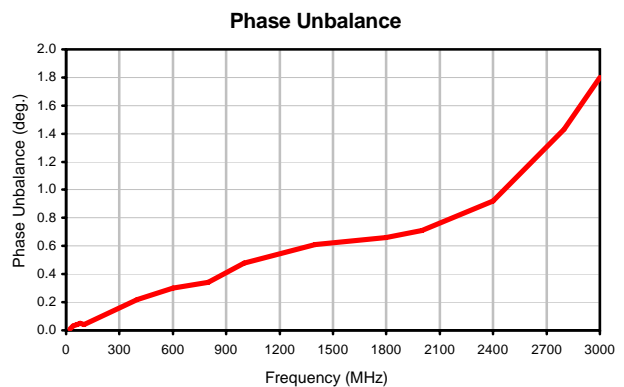
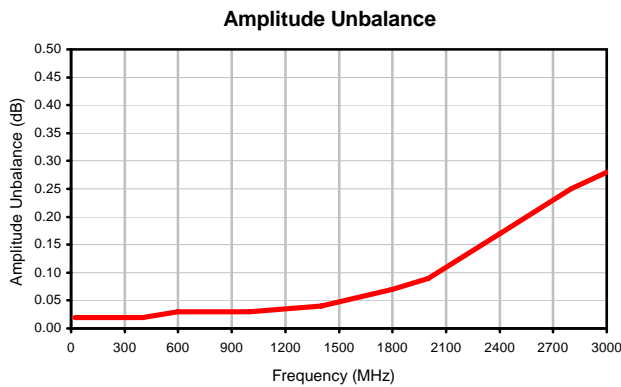
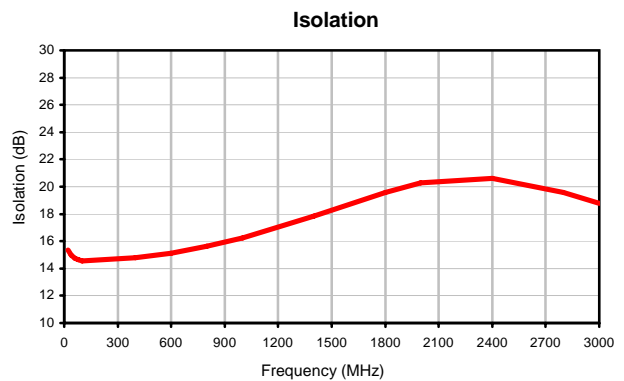
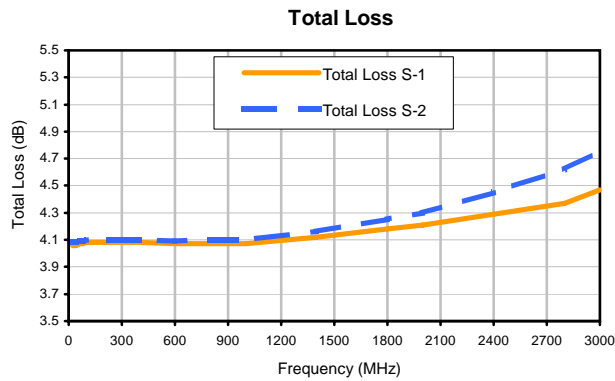
IF/RF MICROWAVE COMPONENTS

REV. X2
ZAPD-30+
6/29/2010
Page 1 of 1

2 Way-0° Power Splitter/Combiner

ZAPD-30+

Typical Performance Curves



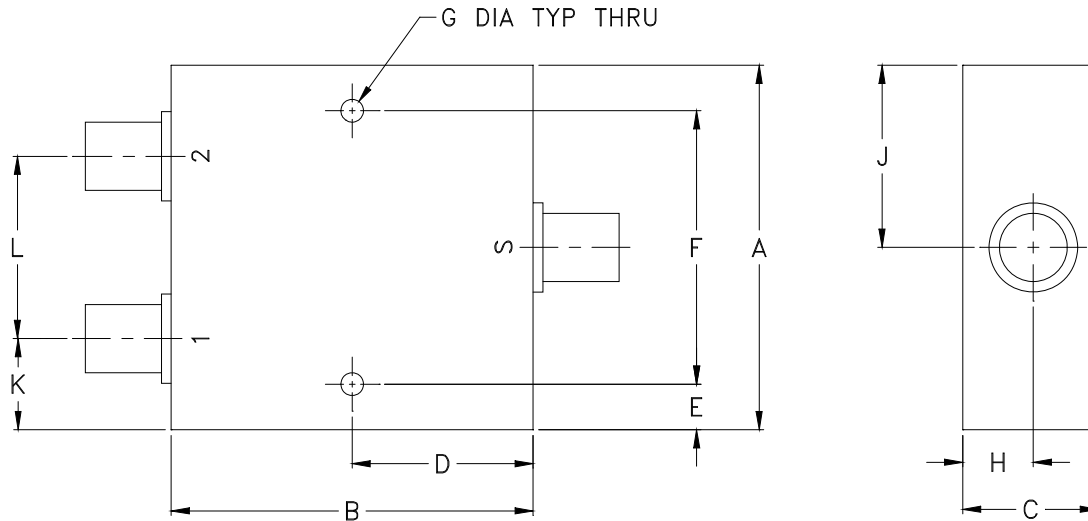
P.O. Box 350166, Brooklyn, New York 11235-0003 (718) 934-4500 • Fax (718) 332-4661 For detailed performance specs & shopping online see Mini-Circuits web site
The Design Engineers Search Engine Provides ACTUAL Data Instantly From MINI-CIRCUITS At: www.minicircuits.com



IF/RF MICROWAVE COMPONENTS

REV. X2
ZAPD-30+
6/29/2010
Page 1 of 1

Outline Dimensions



CASE #	A	B	C	D	E	F	G	H	J	K	L	WT. GRAM
F14	2.00 (50.80)	2.00 (50.80)	.75 (19.05)	1.00 (25.40)	.25 (6.35)	1.500 (38.10)	.125 (3.18)	.39 (9.91)	1.00 (25.40)	.50 (12.70)	1.00 (25.40)	170.0

Dimensions are in inches (mm). Tolerances: 2Pl. $\pm .03$; 3Pl. $\pm .015$

Notes:

- Case material: Aluminum alloy.
- Case finish:
For RoHS Case Styles: Clear chemical conversion coating, non-chrome or trivalent chrome based.
- Refer to the individual model data sheet for the type of connectors available.



All Mini-Circuits products are manufactured under exacting quality assurance and control standards, and are capable of meeting published specifications after being subjected to any or all of the following physical and environmental test.

Specification	Test/Inspection Condition	Reference/Spec
Operating Temperature	-55° to 100°C Ambient Environment	Individual Model Data Sheet
Storage Temperature	-55° to 100° C Ambient Environment	Individual Model Data Sheet
Barometric Pressure	100,000 Feet	MIL-STD-202, Method 105, Condition D
Humidity	90% RH, 65°C Units may require bake-out after humidity to restore full performance.	MIL-STD-202, Method 103
Thermal Shock	-65° to 125°C, 5 cycles	MIL-STD-202, Method 107, Condition B
Vibration (High Frequency)	20g peak, 10-2000 Hz, 12 times in each of three perpendicular directions (total 36)	MIL-STD-202, Method 204, Condition D
Mechanical Shock	100g, 6ms sawtooth, 3 shocks each direction 3 axes (total 18)	MIL-STD-202, Method 213, Condition I