

Coaxial High Power Combiner

ZA2CS-62-40W+

2 Way-0° 50Ω 100 to 600 MHz

Maximum Ratings

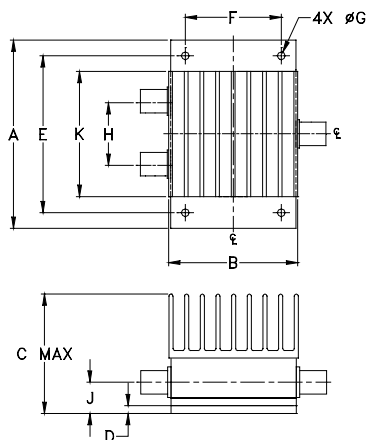
Operating Temperature	-55°C to 90°C
Storage Temperature	-55°C to 100°C

Permanent damage may occur if any of these limits are exceeded.

Coaxial Connections

SUM PORT	S
PORT 1	1
PORT 2	2

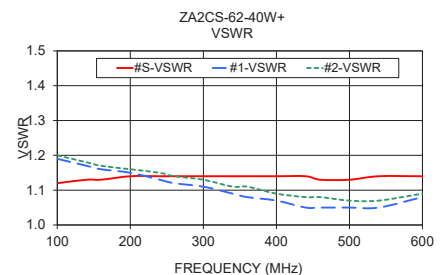
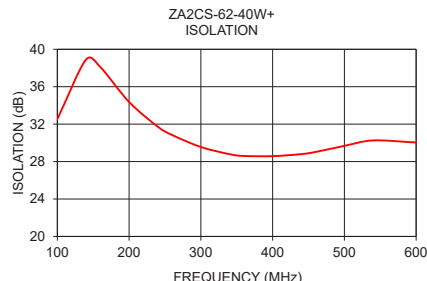
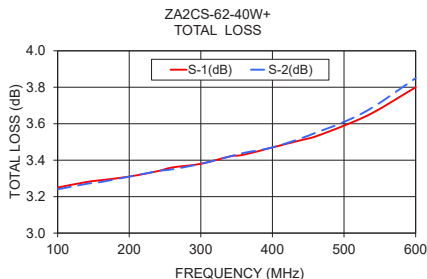
Outline Drawing



Outline Dimensions (inch/mm)

A	B	C	D	E	F	
3.00	2.06	1.92	.100	2.500	1.525	
76.20	52.32	48.77	2.54	63.50	38.74	
G	H	J	K		wt	
.125	1.000	.50	2.00		grams	
3.18	25.40	12.70	50.80		330	

Electrical Schematic



Notes

- Performance and quality attributes and conditions not expressly stated in this specification document are intended to be excluded and do not form a part of this specification document.
- Electrical specifications and performance data contained in this specification document are based on Mini-Circuit's applicable established test performance criteria and measurement instructions.
- The parts covered by this specification document are subject to Mini-Circuit's standard limited warranty and terms and conditions (collectively, "Standard Terms"); Purchasers of this part are entitled to the rights and benefits contained therein. For a full statement of the Standard Terms and the exclusive rights and remedies thereunder, please visit Mini-Circuit's website at www.minicircuits.com/WCLStore/terms.jsp

Features

- high power, up to 40W input power
- wideband, 100 to 600 MHz
- low insertion loss, 0.5 dB typ.
- high isolation, 25 dB typ.

Applications

- VHF/UHF
- communication receivers & transmitters



Generic photo used for illustration purposes only
BNC version shown

CASE STYLE: AW254

Connectors	Model
BNC	ZA2CS-62-40W+
N-TYPE	ZA2CS-62-40W-N+
SMA	ZA2CS-62-40W-S+

+RoHS Compliant

The +Suffix identifies RoHS Compliance. See our web site for RoHS Compliance methodologies and qualifications

Electrical Specifications at 25°C

Parameter	Frequency (MHz)	Min.	Typ.	Max.	Unit
Frequency Range		100		600	MHz
Insertion Loss Above 3.0 dB	100-600	—	0.8	1.2	dB
Isolation	100-600	18	22	—	dB
Phase Unbalance	100-600	—	0.9	3.0	Degree
Amplitude Unbalance	100-600	—	0.2	0.4	dB
VSWR (Port S)	100-600	—	1.25	1.5	:1
VSWR (Port 1-2)	100-600	—	1.2	1.5	:1
Power Input ¹	as combiner ²	100-600	—	5	W
	as splitter	100-600	—	40	

1. Over -55°C to +55°C. Derate linearly to 20% of rating at 90°C

2. As a combiner of non-coherent signals, max. power per port is power rating divided by number of ports.

Typical Performance Data

Frequency (MHz)	Total Loss ¹ (dB)		Amplitude Unbalance (dB)	Isolation (dB)	Phase Unbalance (deg.)	VSWR S	VSWR 1	VSWR 2
	S-1	S-2						
100.00	3.25	3.24	0.01	32.54	0.14	1.12	1.19	1.20
140.00	3.28	3.27	0.01	38.90	0.21	1.13	1.17	1.18
160.00	3.29	3.28	0.01	38.09	0.25	1.13	1.16	1.17
200.00	3.31	3.31	0.01	34.37	0.30	1.14	1.15	1.16
240.00	3.34	3.34	0.01	31.73	0.36	1.14	1.13	1.15
260.00	3.36	3.35	0.00	30.84	0.41	1.14	1.12	1.14
300.00	3.38	3.38	0.00	29.56	0.46	1.14	1.11	1.13
340.00	3.42	3.42	0.00	28.79	0.52	1.14	1.09	1.11
360.00	3.43	3.44	0.00	28.60	0.57	1.14	1.08	1.11
400.00	3.47	3.47	0.01	28.58	0.64	1.14	1.07	1.09
440.00	3.51	3.52	0.01	28.80	0.68	1.14	1.05	1.08
460.00	3.53	3.55	0.02	29.03	0.73	1.13	1.05	1.08
500.00	3.59	3.61	0.02	29.68	0.77	1.13	1.05	1.07
540.00	3.66	3.69	0.03	30.26	0.82	1.14	1.05	1.07
600.00	3.80	3.85	0.05	30.04	0.91	1.14	1.08	1.09

1. Total Loss = Insertion Loss + 3dB splitter theoretical loss.

2 Way-0° Power Splitter/Combiner

ZA2CS-62-40W+

Typical Performance Data

FREQUENCY (MHz)	TOTAL LOSS ¹ (dB)		AMPLITUDE UNBALANCE (dB)	ISOLATION (dB) 1-2	PHASE UNBALANCE (deg.)	FREQUENCY (MHz)	VSWR (:1)		
	S-1	S-2					S	1	2
100.0	3.25	3.24	0.01	32.54	0.14	100.0	1.12	1.19	1.20
120.0	3.26	3.25	0.01	36.81	0.17	120.0	1.12	1.18	1.19
140.0	3.28	3.27	0.01	38.90	0.21	140.0	1.13	1.17	1.18
160.0	3.29	3.28	0.01	38.09	0.25	160.0	1.13	1.16	1.17
180.0	3.30	3.29	0.01	36.21	0.27	180.0	1.13	1.15	1.17
200.0	3.31	3.31	0.01	34.37	0.30	200.0	1.14	1.15	1.16
220.0	3.33	3.32	0.00	32.89	0.34	220.0	1.14	1.14	1.16
240.0	3.34	3.34	0.01	31.73	0.36	240.0	1.14	1.13	1.15
260.0	3.36	3.35	0.00	30.84	0.41	260.0	1.14	1.12	1.14
280.0	3.37	3.37	0.00	30.13	0.42	280.0	1.14	1.11	1.14
300.0	3.38	3.38	0.00	29.56	0.46	300.0	1.14	1.11	1.13
320.0	3.40	3.40	0.00	29.11	0.49	320.0	1.14	1.10	1.12
340.0	3.42	3.42	0.00	28.79	0.52	340.0	1.14	1.09	1.11
360.0	3.43	3.44	0.00	28.60	0.57	360.0	1.14	1.08	1.11
380.0	3.45	3.45	0.01	28.53	0.60	380.0	1.14	1.07	1.10
400.0	3.47	3.47	0.01	28.58	0.64	400.0	1.14	1.07	1.09
420.0	3.49	3.50	0.01	28.64	0.66	420.0	1.14	1.06	1.09
440.0	3.51	3.52	0.01	28.80	0.68	440.0	1.14	1.05	1.08
460.0	3.53	3.55	0.02	29.03	0.73	460.0	1.13	1.05	1.08
480.0	3.56	3.58	0.02	29.35	0.74	480.0	1.13	1.05	1.08
500.0	3.59	3.61	0.02	29.68	0.77	500.0	1.13	1.05	1.07
520.0	3.62	3.65	0.03	29.98	0.80	520.0	1.13	1.05	1.07
540.0	3.66	3.69	0.03	30.26	0.82	540.0	1.14	1.05	1.07
560.0	3.70	3.73	0.04	30.39	0.87	560.0	1.14	1.06	1.08
580.0	3.75	3.79	0.04	30.33	0.88	580.0	1.14	1.07	1.08
600.0	3.80	3.85	0.05	30.04	0.91	600.0	1.14	1.08	1.09

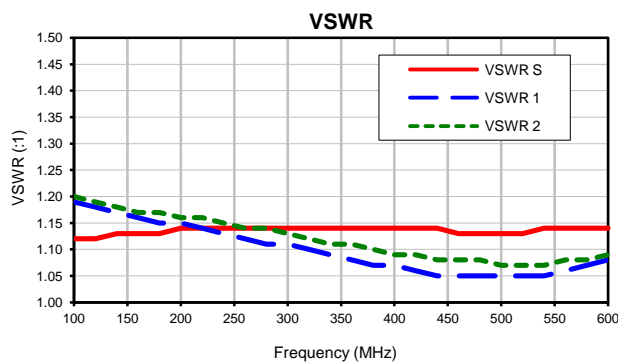
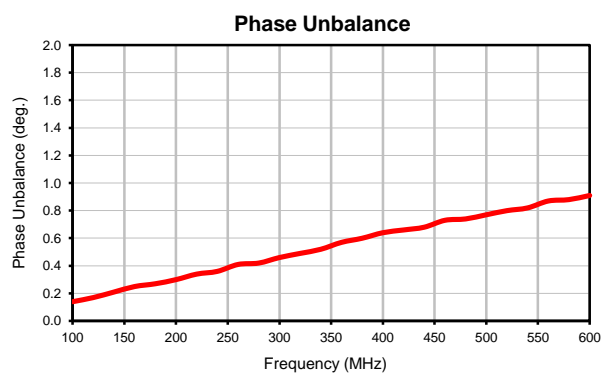
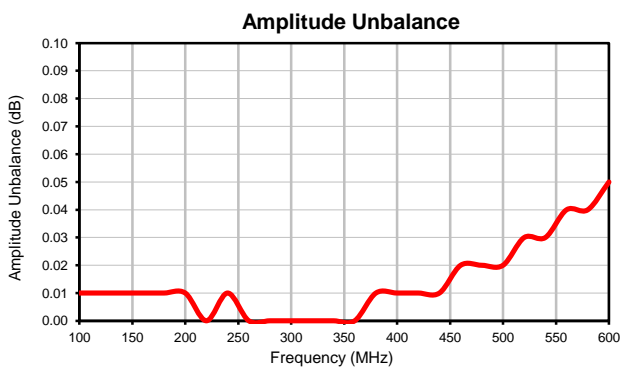
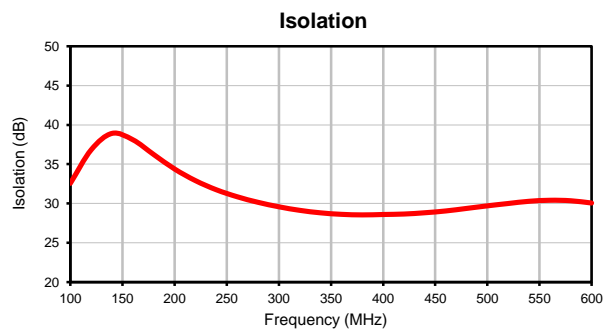
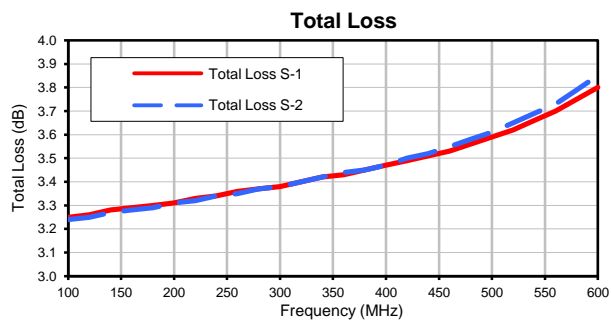
¹Total Loss = Insertion Loss + 3dB Splitter Loss



2 Way-0° Power Splitter/Combiner

ZA2CS-62-40W+

Typical Performance Curves



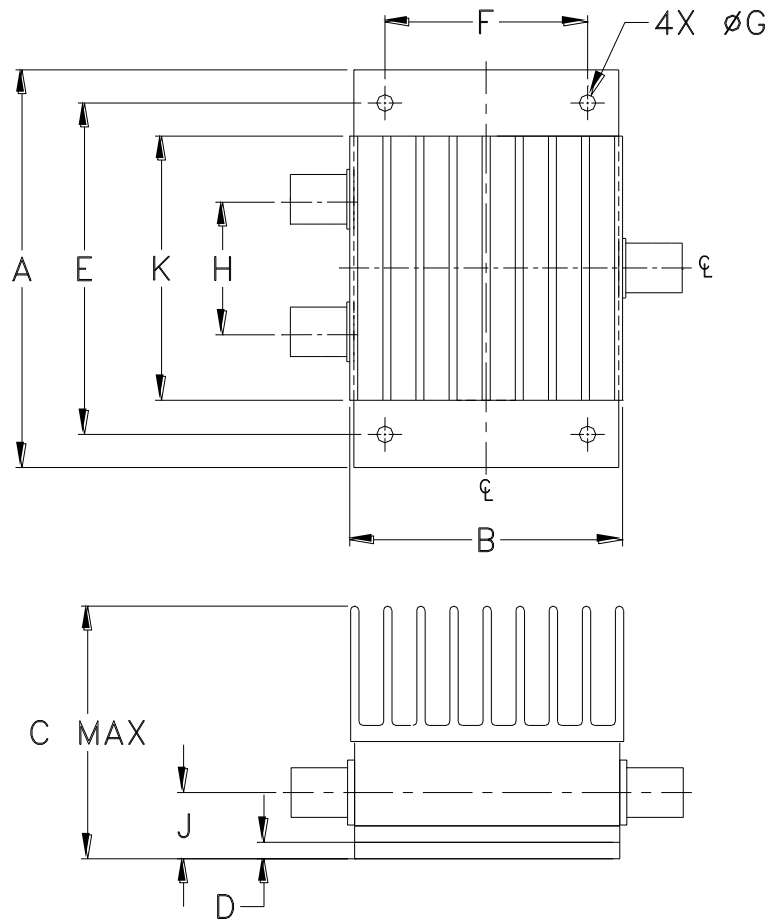
P.O. Box 350166, Brooklyn, New York 11235-0003 (718) 934-4500 • Fax (718) 332-4661 For detailed performance specs & shopping online see Mini-Circuits web site
The Design Engineers Search Engine Provides ACTUAL Data Instantly From MINI-CIRCUITS At: www.minicircuits.com

IF/RF MICROWAVE COMPONENTS

REV. OR
ZA2CS-62-40W+
2/24/2014
Page 1 of 1

Outline Dimensions

AW254



CASE #	A	B	C	D	E	F	G	H	J	K	WT. GRAM
AW254	3.00 (76.20)	2.06 (52.32)	1.92 (48.77)	.100 (2.54)	2.500 (63.50)	1.525 (38.74)	.125 (3.18)	1.000 (25.40)	.50 (12.70)	2.00 (50.80)	330

Dimensions are in inches (mm). Tolerances: 2Pl. $\pm .03$; 3Pl. $\pm .015$

Notes:

1. Case material: Aluminum alloy.
2. Case Finish:
For RoHS Case Styles: Clear chemical conversion coating, non-chrome or trivalent chrome based.
3. Heat sink finish: Black anodize.



P.O. Box 350166, Brooklyn, New York 11235-0003 (718) 934-4500 Fax (718) 332-4661 For detailed performance specs & shopping online see Mini-Circuits web site



The Design Engineers Search Engine Provides ACTUAL Data Instantly From MINI-CIRCUITS At: www.minicircuits.com

RF/IF MICROWAVE COMPONENTS



All Mini-Circuits products are manufactured under exacting quality assurance and control standards, and are capable of meeting published specifications after being subjected to any or all of the following physical and environmental test.

Specification	Test/Inspection Condition	Reference/Spec
Operating Temperature	-55° to 90° C Ambient Environment	Individual Model Data Sheet
Storage Temperature	-55° to 100° C Ambient Environment	Individual Model Data Sheet
Barometric Pressure	100,000 Feet	MIL-STD-202, Method 105, Condition D
Humidity	90% RH, 65°C Units may require bake-out after humidity to restore full performance.	MIL-STD-202, Method 103
Thermal Shock	-65° to 125°C, 5 cycles	MIL-STD-202, Method 107, Condition B
Vibration (High Frequency)	20g peak, 10-2000 Hz, 12 times in each of three perpendicular directions (total 36)	MIL-STD-202, Method 204, Condition D
Mechanical Shock	100g, 6ms sawtooth, 3 shocks each direction 3 axes (total 18)	MIL-STD-202, Method 213, Condition I