

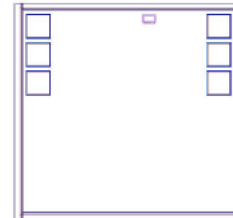
MMIC

REFLECTIONLESS FILTER DICE

50Ω DC to 21 GHz

The Big Deal

- Patented design eliminates in band spurs
- Pass band cut-off up to 21 GHz
- Stop band up to 35 GHz
- Excellent repeatability through IPD* process
- Unpackaged Die Form



X-Series

Available in Low Pass, High Pass and Band Pass designs

Product Overview

Mini-Circuits' X-Series reflectionless filters employ a novel filter topology which absorbs and terminates stop band signals internally rather than reflecting them back to the source. This new capability enables unique applications for filter circuits beyond those suited to traditional approaches. Traditional filters are reflective in the stop band, sending signals back to the source at 100% of the power level which interact with neighboring components and often result in intermodulation and other interferences. Reflectionless filters eliminate stop band reflections, allowing them to be paired with sensitive devices and used in applications that otherwise require circuits such as isolators, isolation amplifiers or attenuators.

Key Features

Easy integration with sensitive reflective components, e.g. mixers, multipliers

Enables stable integration of wideband amplifiers

Cascadable

Excellent power handling in a tiny surface mount device

Excellent repeatability of RF performance

Excellent stability over temperature

Operating Temperature up to 105°C

Unpackaged Die form

Advantages

Reflectionless filters absorb unwanted signals, preventing reflections back to the source. This reduces generation of additional unwanted signals without the need for extra components like attenuators, improving system dynamic range and saving board space.

Because reflectionless filters maintain good impedance in the stop band; they can be integrated with high gain, wideband amplifiers without the risk of creating instabilities in these out of band regions.

Reflectionless filters can be cascaded in multiple sections to provide sharper and higher attenuation, while also preventing any standing waves that could affect pass band signals.

High power handling extends the usability of these filters to the transmit path for inter-stage filtering.

Through semiconductor IPD process, X-series filters are inherently repeatable for large volume production.

With ± 0.3 dB variation over temperature ideal for use in wide temperature range applications without the need for additional temperature compensation.

Suitable for operation close to high power components

Enables direct integration into customer hybrids

*IPD – Integrated Passive Device, is a GaAs semiconductor process



Reflectionless Low Pass Filter Die

XLF-762-D+

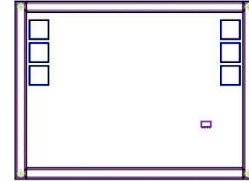
50Ω DC to 7600 MHz

Features

- Match to 50Ω in the stop band, eliminates undesired reflections
- Cascadable
- Excellent Power handling
- Protected by US Patent No. 8,392,495

Applications

- Harmonics Rejection
- Satellite
- Radar
- Military & Space



+RoHS Compliant

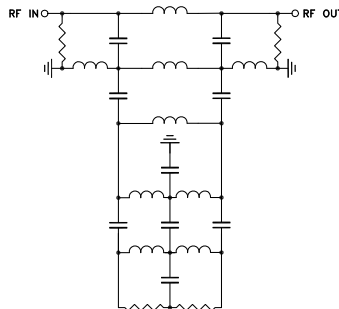
The +Suffix identifies RoHS Compliance. See our web site for RoHS Compliance methodologies and qualifications

Ordering Information: Refer to Last Page

General Description

Mini-Circuits' XLF-762-D+ reflectionless filter die employs a novel filter topology which absorbs and terminates stop band signals internally rather than reflecting them back to the source. This new capability enables unique applications for filter circuits beyond those suited to traditional approaches. Traditional filters are reflective in the stop band, sending signals back to the source at 100% of the power level. These reflections interact with neighboring components and often result in inter-modulation and other interferences. Reflectionless filters eliminate stop band reflections, allowing them to be paired with sensitive devices and used in applications that otherwise require circuits such as isolation amplifiers or attenuators.

Simplified Schematic



Pad	Description
RF-IN	RF Input Pad
RF-OUT	RF Output Pad
Ground	Ground Bonding Pad

Electrical Specifications¹ at 25°C

Parameter		F#	Frequency (MHz)	Min.	Typ.	Max.	Unit
Pass Band	Insertion Loss	DC - F1	DC - 7600		1.1		dB
	Frequency Cut-off	F2	11000		3.0		dB
	VSWR	DC - F1	DC - 7600		1.3		:1
Stop Band	Rejection	F3 - F5	13100 - 23000		15		dB
		F3 - F4	13100 - 20000		1.7		:1
	VSWR	F4 - F5	20000 - 23000		2.7		:1

¹ Measured on Mini-Circuits Characterization test board. Die packaged in 3mm x 3mm, 12-lead MCLP package and soldered on TB-844-762+

Absolute Maximum Ratings^{1,4}

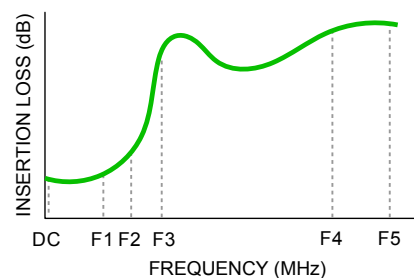
Parameter	Ratings
Operating Temperature	-55°C to +105°C
RF Power Input, Passband (DC-F1) ²	2W at 25°C
RF Power Input, Stopband (F2-F5) ³	100mW at 25°C

² Passband rating derates linearly to 1W at 105°C ambient

³ Stopband rating derates linearly to 50mW at 105°C ambient

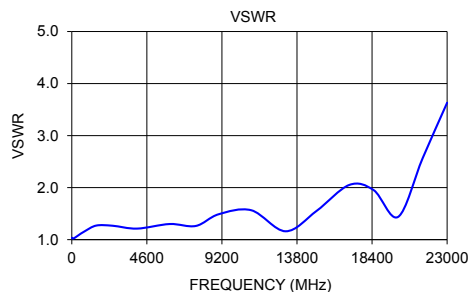
⁴ Permanent damage may occur if any of these limits are exceeded.

Specification Definition



Typical Performance Data at 25°C¹

Frequency (MHz)	Insertion Loss (dB)	VSWR (:1)
10	0.39	1.04
50	0.40	1.02
100	0.38	1.02
200	0.39	1.04
400	0.40	1.08
800	0.45	1.16
1500	0.53	1.27
2500	0.60	1.27
4000	0.65	1.21
6000	0.84	1.30
7600	1.02	1.26
9000	1.45	1.49
11000	2.96	1.57
13100	14.60	1.16
15000	26.17	1.55
17000	19.42	2.05
18500	20.07	1.95
20000	26.26	1.44
21500	21.97	2.57
23000	17.87	3.63



Die Layout

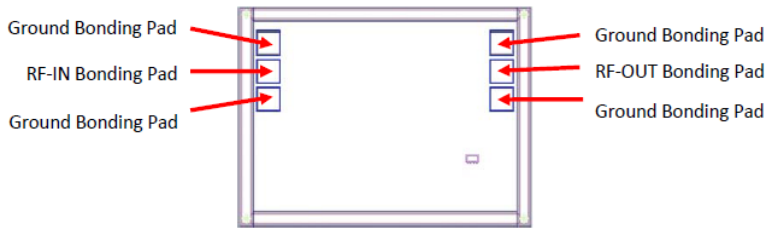


Fig 1. Die Layout

Bonding Pad Position
(Dimensions in μm , Typical)

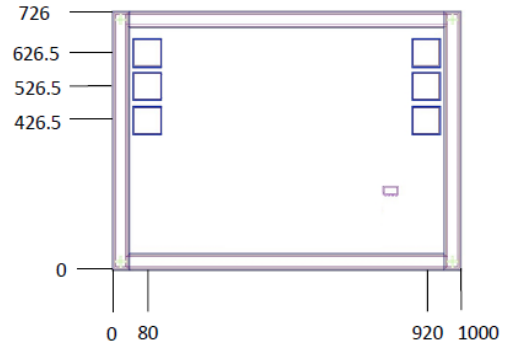


Fig 2. Bonding Pad Positions

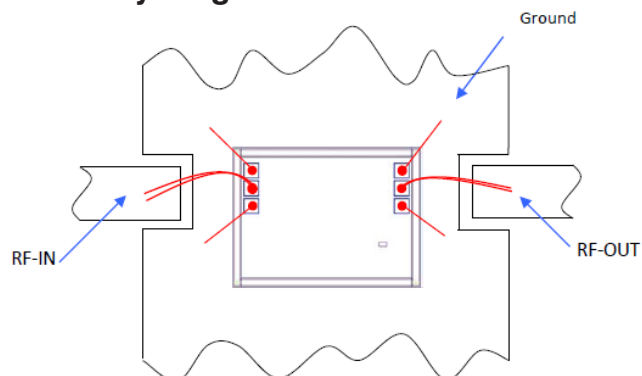
Critical Dimensions

Parameter	Values
Die Thickness, μm	100
Die Width, μm	1000
Die Length, μm	726
Bond Pad Size (Ground pad), μm	75 x 75

Assembly and Handling Procedure

1. Storage
Dice should be stored in a dry nitrogen purged desiccators or equivalent.
2. ESD
MMIC Gallium Arsenide (GaAs) filter dice are susceptible to electrostatic and mechanical damage. Die are supplied in antistatic protected material, which should be opened in clean room conditions at an appropriately grounded anti-static workstation. Devices need careful handling using correctly designed collets, vacuum pickup tips or sharp antistatic tweezers to deter ESD damage to dice.
3. Die Attach
The die mounting surface must be clean and flat. Using conductive silver filled epoxy, recommended epoxies are DieMat DM6030Hk-PT/H579/H579 or Ablestik 84-1LMISR4. Apply sufficient epoxy to meet required epoxy bond line thickness, epoxy fillet height and epoxy coverage around total die periphery. Parts shall be cured in a nitrogen filled atmosphere per manufacturer's cure condition. It is recommended to use antistatic die pick up tools only.
4. Wire Bonding
Bond pad openings in the surface passivation above the bond pads are provided to allow wire bonding to the dice gold bond pads. Thermosonic bonding is used with minimized ultrasonic content. Bond force, time, ultrasonic power and temperature are all critical parameters. Suggested wire is pure gold, 1 mil diameter. Bonds must be made from the bond pads on the die to the package or substrate. All bond wires should be kept as short as low as reasonable to minimize performance degradation due to undesirable series inductance.

Assembly Diagram



Recommended Wire Length, Typical

Wire	Wire Length (mm)	Wire Loop Height (mm)
All wires	1.0	0.15

Note: Use double bond wire at RF IN & RF OUT

Typical Performance Data

FREQ. (MHz)	INSERTION LOSS					GROUP DELAY				
	(dB)					(nsec)				
	@-55°C	@-40°C	@+25°C	@+85°C	@+105°C	@-55°C	@-40°C	@+25°C	@+85°C	@+105°C
10	0.38	0.38	0.40	0.41	0.45	0.06	0.06	0.08	0.06	0.09
50	0.34	0.35	0.39	0.41	0.42	0.05	0.06	0.06	0.06	0.07
100	0.33	0.34	0.38	0.41	0.42	0.06	0.05	0.05	0.05	0.05
200	0.33	0.34	0.40	0.42	0.44	0.05	0.05	0.05	0.05	0.05
300	0.33	0.35	0.40	0.44	0.45	0.05	0.05	0.05	0.05	0.04
400	0.32	0.34	0.40	0.43	0.45	0.05	0.05	0.05	0.05	0.04
500	0.33	0.34	0.41	0.45	0.47	0.05	0.05	0.04	0.04	0.04
600	0.33	0.36	0.43	0.47	0.48	0.05	0.05	0.04	0.04	0.04
700	0.34	0.36	0.44	0.49	0.50	0.05	0.05	0.04	0.04	0.04
800	0.35	0.37	0.45	0.49	0.51	0.05	0.05	0.04	0.04	0.04
900	0.35	0.37	0.46	0.51	0.52	0.05	0.05	0.04	0.04	0.04
1000	0.35	0.38	0.47	0.51	0.53	0.05	0.05	0.04	0.04	0.04
1200	0.37	0.39	0.50	0.55	0.56	0.05	0.05	0.04	0.04	0.04
1400	0.38	0.41	0.52	0.58	0.60	0.05	0.05	0.04	0.04	0.04
1600	0.40	0.43	0.54	0.60	0.62	0.05	0.05	0.04	0.04	0.04
1800	0.41	0.44	0.56	0.61	0.63	0.05	0.05	0.04	0.04	0.04
2000	0.42	0.44	0.57	0.63	0.64	0.05	0.05	0.04	0.04	0.04
2500	0.43	0.46	0.60	0.66	0.68	0.05	0.05	0.04	0.04	0.04
3000	0.42	0.46	0.61	0.68	0.69	0.05	0.05	0.04	0.04	0.04
3500	0.42	0.46	0.62	0.70	0.73	0.05	0.05	0.04	0.04	0.04
4000	0.43	0.47	0.65	0.75	0.77	0.05	0.05	0.04	0.04	0.04
4500	0.44	0.49	0.69	0.80	0.84	0.05	0.05	0.05	0.04	0.05
5000	0.46	0.52	0.74	0.86	0.90	0.05	0.05	0.05	0.05	0.05
5500	0.51	0.56	0.79	0.92	0.97	0.05	0.05	0.05	0.05	0.05
6000	0.55	0.61	0.84	0.98	1.02	0.05	0.05	0.05	0.05	0.05
6400	0.57	0.63	0.87	1.02	1.06	0.06	0.05	0.05	0.05	0.05
6800	0.59	0.65	0.91	1.06	1.11	0.06	0.06	0.05	0.05	0.05
7000	0.60	0.66	0.93	1.09	1.15	0.06	0.06	0.05	0.05	0.05
7200	0.60	0.67	0.96	1.13	1.19	0.06	0.06	0.05	0.05	0.05
7400	0.61	0.69	0.98	1.17	1.23	0.06	0.06	0.05	0.06	0.06
7600	0.62	0.69	1.01	1.20	1.27	0.06	0.06	0.06	0.06	0.06
7800	0.65	0.72	1.05	1.26	1.33	0.07	0.06	0.06	0.06	0.06
8000	0.67	0.75	1.10	1.31	1.38	0.07	0.07	0.06	0.06	0.06
8200	0.70	0.79	1.15	1.37	1.45	0.07	0.07	0.06	0.06	0.06
8400	0.75	0.83	1.20	1.44	1.52	0.07	0.07	0.06	0.06	0.06
8600	0.81	0.90	1.27	1.51	1.60	0.07	0.07	0.07	0.06	0.06
8800	0.89	0.97	1.35	1.61	1.69	0.07	0.07	0.07	0.07	0.07
9000	0.98	1.07	1.44	1.69	1.78	0.07	0.07	0.07	0.07	0.07
9200	1.09	1.18	1.55	1.81	1.89	0.08	0.08	0.07	0.07	0.07
9400	1.19	1.30	1.67	1.93	2.01	0.08	0.08	0.07	0.07	0.07
9600	1.31	1.40	1.78	2.05	2.14	0.08	0.08	0.07	0.07	0.08
9800	1.42	1.52	1.91	2.19	2.28	0.08	0.08	0.08	0.08	0.08
10000	1.53	1.63	2.05	2.35	2.44	0.09	0.08	0.08	0.08	0.08
10600	1.86	1.98	2.53	2.90	3.03	0.10	0.10	0.10	0.10	0.10
10800	1.98	2.11	2.71	3.13	3.27	0.11	0.11	0.10	0.10	0.10
11000	2.13	2.28	2.94	3.41	3.56	0.12	0.12	0.11	0.11	0.11
11200	2.35	2.51	3.23	3.75	3.91	0.13	0.13	0.12	0.12	0.12
11400	2.66	2.84	3.60	4.18	4.37	0.14	0.14	0.13	0.13	0.13
11600	3.07	3.26	4.09	4.73	4.94	0.15	0.15	0.14	0.14	0.14
12000	4.33	4.56	5.54	6.34	6.60	0.17	0.17	0.16	0.15	0.15
13000	11.45	11.81	13.32	14.60	15.00	0.17	0.16	0.14	0.13	0.13
13100	12.58	12.96	14.56	15.87	16.28	0.17	0.16	0.13	0.12	0.12
13200	13.79	14.18	15.86	17.19	17.62	0.15	0.15	0.13	0.11	0.10
13300	15.09	15.52	17.22	18.58	19.04	0.14	0.14	0.10	0.09	0.08
14000	25.56	25.68	26.44	27.04	27.21	-0.07	-0.05	-0.04	0.00	0.00
15000	25.53	25.64	26.11	26.51	26.58	0.23	0.22	0.24	0.23	0.23
16000	20.97	21.08	21.51	21.81	21.88	0.17	0.17	0.15	0.13	0.13
17000	19.03	19.10	19.39	19.66	19.75	0.10	0.10	0.10	0.11	0.10
18000	18.45	18.60	19.41	19.85	20.05	0.12	0.12	0.10	0.10	0.10
19000	19.93	20.17	21.32	22.21	22.51	0.14	0.14	0.14	0.13	0.14
20000	24.12	24.41	26.20	27.66	28.28	0.27	0.27	0.29	0.31	0.33
21000	23.55	23.78	24.33	24.91	25.18	0.23	0.23	0.20	0.18	0.15
22000	20.62	20.66	20.33	20.31	20.36	0.06	0.06	0.08	0.09	0.09
23000	17.38	17.53	17.89	17.79	17.69	0.06	0.05	0.05	0.06	0.07
24000	14.81	14.97	16.17	16.50	16.63	0.07	0.07	0.03	0.03	0.04
25000	14.42	14.38	14.46	14.91	15.17	0.04	0.03	0.04	0.04	0.03
26000	13.40	13.43	13.00	13.14	13.23	0.02	0.02	0.05	0.05	0.05
27000	10.72	10.94	11.81	12.09	12.16	0.06	0.07	0.04	0.05	0.05
28000	9.51	9.68	10.83	11.69	11.91	0.07	0.07	0.06	0.05	0.04
29000	10.29	10.35	10.18	10.87	11.28	0.03	0.03	0.05	0.04	0.03
30000	9.96	10.14	10.10	10.27	10.35	0.03	0.03	0.05	0.06	0.05
31000	8.79	9.09	10.50	10.76	10.72	0.07	0.07	0.04	0.05	0.05
32000	9.41	9.60	11.51	12.45	12.71	0.10	0.10	0.01	0.01	0.01
33000	12.08	12.08	11.93	13.19	13.82	0.02	0.01	0.03	0.01	0.00
34000	13.57	13.60	12.50	12.98	13.44	-0.02	-0.02	0.01	0.02	0.01
35000	12.36	12.57	12.91	12.82	12.70	-0.01	0.00	0.01	0.00	0.01

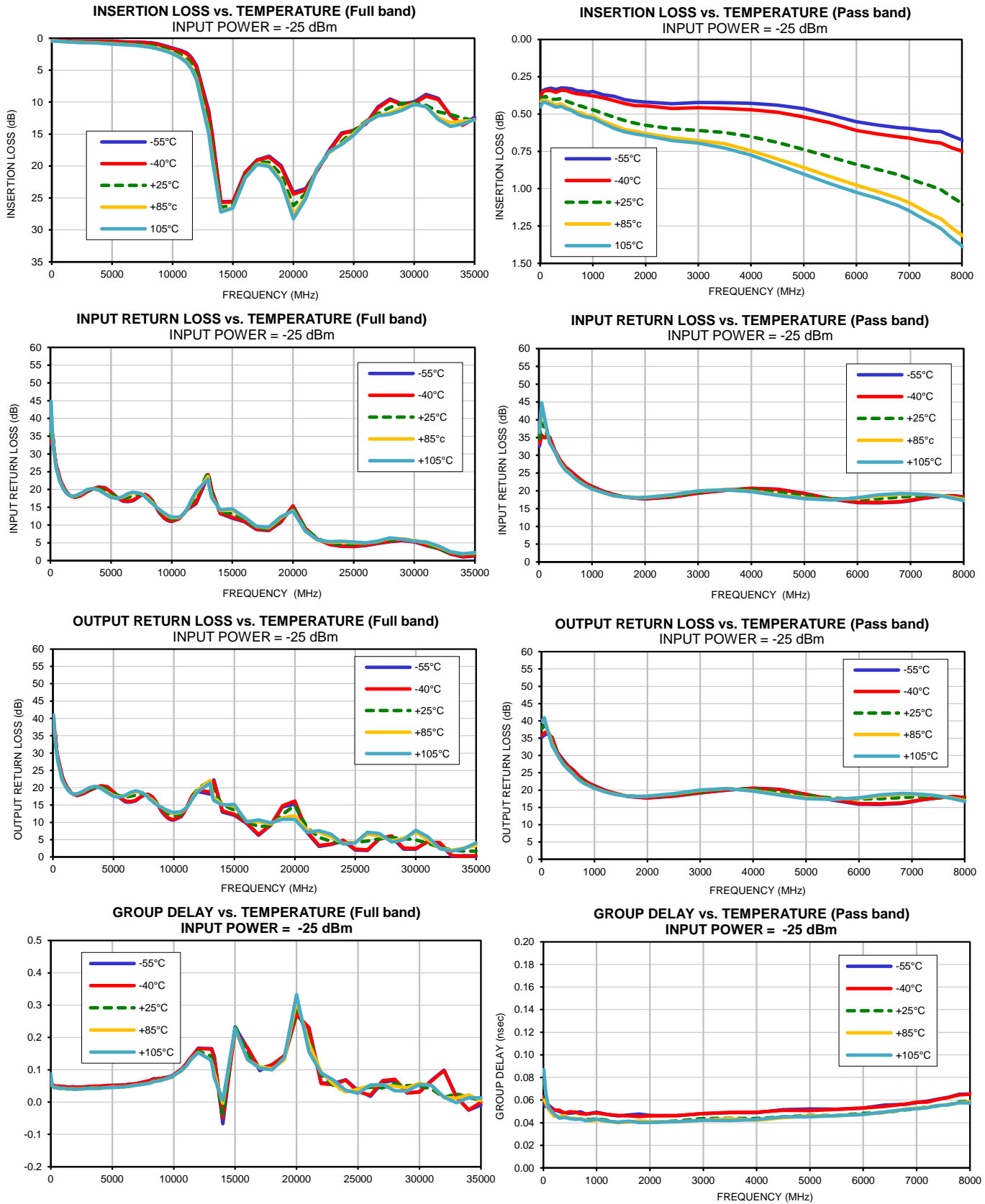


Typical Performance Data

FREQ. (MHz)	INPUT RETURN LOSS					OUTPUT RETURN LOSS				
	(dB)					(dB)				
	@-55°C	@-40°C	@+25°C	@+85°C	@+105°C	@-55°C	@-40°C	@+25°C	@+85°C	@+105°C
10	32.59	33.22	34.70	36.73	36.41	35.37	35.80	37.76	40.07	39.80
50	35.69	35.56	39.16	43.51	44.81	35.87	36.60	38.84	40.48	40.93
100	34.96	35.08	37.84	40.59	41.17	36.29	36.80	37.91	38.31	38.00
200	35.22	35.13	34.02	33.54	33.52	35.28	35.12	34.40	33.38	32.86
300	31.15	31.35	30.92	31.02	31.01	30.88	30.86	30.42	30.14	30.19
400	28.71	28.61	28.04	27.96	27.78	28.93	28.70	28.08	27.72	27.70
500	26.73	26.57	26.11	25.91	25.76	27.08	27.03	26.57	26.16	25.96
600	25.59	25.44	24.72	24.71	24.61	25.80	25.73	24.79	24.66	24.65
700	24.28	24.17	23.50	23.28	23.22	24.23	24.15	23.36	23.11	23.03
800	23.00	22.97	22.43	22.21	22.12	22.99	22.90	22.36	22.05	21.95
900	22.01	21.91	21.48	21.35	21.31	21.96	21.91	21.48	21.28	21.25
1000	21.28	21.22	20.78	20.58	20.53	21.28	21.21	20.75	20.55	20.51
1200	20.02	19.96	19.70	19.53	19.52	19.96	19.92	19.64	19.50	19.48
1400	19.04	19.01	18.86	18.69	18.67	19.01	19.02	18.87	18.79	18.69
1600	18.33	18.33	18.36	18.26	18.27	18.26	18.31	18.40	18.33	18.31
1800	17.97	17.98	18.11	18.07	18.09	17.94	17.99	18.20	18.17	18.16
2000	17.72	17.80	18.05	18.10	18.15	17.70	17.81	18.16	18.25	18.24
2500	18.28	18.30	18.53	18.82	18.91	18.26	18.32	18.70	18.89	18.99
3000	19.35	19.38	19.66	19.92	19.99	19.16	19.25	19.59	19.92	20.02
3500	20.14	20.19	20.35	20.32	20.28	19.97	20.06	20.32	20.42	20.43
4000	20.71	20.69	20.33	19.88	19.76	20.56	20.54	20.24	19.87	19.71
4500	20.49	20.43	19.61	18.92	18.73	20.26	20.18	19.49	18.80	18.58
5000	19.28	19.26	18.65	17.98	17.77	18.78	18.80	18.35	17.75	17.50
5500	17.70	17.77	17.78	17.48	17.43	17.15	17.31	17.68	17.40	17.30
6000	16.68	16.81	17.60	17.90	18.06	15.92	16.14	17.38	17.68	17.81
6400	16.59	16.74	17.80	18.57	18.87	15.85	16.04	17.53	18.31	18.63
6800	16.83	17.00	18.24	19.01	19.25	16.13	16.29	17.86	18.76	19.05
7000	17.23	17.37	18.45	19.04	19.17	16.65	16.81	18.04	18.81	18.99
7200	17.76	17.83	18.64	19.03	19.07	17.15	17.22	18.12	18.68	18.75
7400	18.18	18.26	18.64	18.89	18.86	17.57	17.60	18.10	18.49	18.52
7600	18.61	18.63	18.63	18.66	18.55	17.91	17.92	17.97	18.09	18.02
7800	18.64	18.62	18.23	18.12	17.91	18.18	18.11	17.76	17.64	17.44
8000	18.29	18.26	17.83	17.59	17.28	17.86	17.82	17.29	16.98	16.70
8200	17.68	17.67	17.26	16.95	16.67	17.42	17.37	16.80	16.46	16.15
8400	16.86	16.86	16.51	16.29	16.06	16.58	16.60	16.11	15.86	15.56
8600	15.67	15.71	15.77	15.60	15.45	15.44	15.52	15.44	15.26	15.04
8800	14.54	14.62	14.94	14.91	14.82	14.28	14.46	14.71	14.72	14.58
9000	13.38	13.50	14.12	14.30	14.31	13.07	13.27	14.00	14.28	14.29
9200	12.63	12.76	13.42	13.78	13.85	12.23	12.42	13.36	13.84	13.91
9400	11.91	12.04	12.76	13.21	13.33	11.48	11.69	12.79	13.21	13.54
9600	11.42	11.55	12.28	12.75	12.91	10.98	11.18	12.39	13.08	13.30
9800	11.09	11.20	11.91	12.32	12.48	10.69	10.88	12.04	12.71	12.94
10000	11.00	11.10	11.70	12.08	12.25	10.64	10.82	11.93	12.60	12.86
10600	11.77	11.82	11.94	12.09	12.21	11.65	11.76	12.36	12.88	13.10
10800	12.42	12.45	12.43	12.49	12.55	12.59	12.70	13.01	13.37	13.54
11000	13.25	13.28	13.12	13.16	13.22	13.91	13.99	13.85	14.05	14.11
11200	14.07	14.13	14.03	14.14	14.23	15.32	15.40	14.96	14.95	14.93
11400	14.65	14.78	15.08	15.32	15.44	16.80	16.99	16.37	16.19	16.06
11600	15.10	15.32	16.13	16.64	16.87	17.87	18.17	17.77	17.41	17.13
12000	16.03	16.31	17.94	18.91	19.42	18.91	19.36	19.90	19.51	19.02
13000	23.74	24.20	24.88	23.70	22.95	18.17	18.78	21.85	22.05	21.35
13100	23.20	23.24	22.65	21.27	20.67	19.37	19.82	20.84	19.74	18.97
13200	21.56	21.40	20.58	19.36	18.90	21.24	21.39	19.70	18.05	17.20
13300	19.82	19.66	18.97	17.94	17.61	22.25	21.97	18.66	17.06	16.28
14000	13.23	13.32	13.75	14.08	14.25	13.00	13.38	15.14	15.21	15.05
15000	11.94	12.19	13.23	14.15	14.54	12.02	12.31	13.50	14.70	15.17
16000	10.95	11.11	11.77	12.14	12.18	9.70	9.91	10.44	10.36	10.11
17000	8.71	8.82	9.26	9.56	9.64	6.26	6.52	8.71	10.11	10.72
18000	8.40	8.52	8.91	9.23	9.39	9.21	9.23	9.11	9.60	9.82
19000	10.72	10.90	11.50	12.04	12.32	14.52	14.80	12.37	11.38	10.90
20000	15.42	15.38	14.83	14.11	13.96	15.33	16.15	14.85	11.91	10.83
21000	9.11	9.04	9.04	8.42	8.32	7.11	7.42	8.61	7.73	7.13
22000	6.04	6.03	6.22	5.82	5.86	3.08	3.32	5.63	7.14	7.58
23000	4.50	4.59	4.90	5.16	5.33	3.62	3.72	4.50	5.78	6.57
24000	4.01	4.12	4.60	5.22	5.47	4.69	4.88	4.09	3.89	3.77
25000	3.95	4.07	4.65	5.07	5.19	1.98	2.29	4.14	4.29	4.05
26000	4.22	4.33	4.81	4.94	5.01	1.85	2.09	4.64	6.55	7.11
27000	4.81	4.90	5.20	5.39	5.51	5.28	5.23	5.22	6.14	6.78
28000	5.31	5.41	5.74	6.25	6.36	5.81	6.12	5.61	4.68	4.30
29000	5.62	5.69	6.04	6.08	5.99	2.27	2.58	5.36	5.42	4.92
30000	5.26	5.32	5.76	5.56	5.47	2.29	2.49	4.92	7.18	7.72
31000	4.24	4.30	4.60	5.02	5.23	4.54	4.40	3.98	5.06	5.89
32000	3.36	3.39	3.35	3.83	4.05	3.86	4.11	2.79	2.46	2.43
33000	1.82	1.91	2.19	2.41	2.47	0.20	0.44	2.03	1.91	1.66
34000	1.01	1.11	1.68	1.86	1.90	0.44	0.24	1.69	2.61	2.49
35000	1.34	1.43	1.92	2.14	2.26	0.22	0.41	1.69	3.26	4.07



Typical Performance Curves



All Mini-Circuits products are manufactured under exacting quality assurance and control standards, and are capable of meeting published specifications after being subjected to any or all of the following physical and environmental test.

Specification	Test/Inspection Condition	Reference/Spec
Operating Temperature	-40° to 85° C or -40° to 105° C or -55° to 105° C or -45° to 105° C Ambient Environment	Refer to Individual Model Data Sheet
Storage Environment (Die)	-65° to 150°C	Individual Model Data Sheet
Storage Environment(Packaging)	-40° to 70°C and 40 to 60% humidity (In Factory Shipped Package)	