

MMIC

REFLECTIONLESS FILTER DICE

50Ω DC to 21 GHz

The Big Deal

- Patented design eliminates in band spurs
- Pass band cut-off up to 21 GHz
- Stop band up to 35 GHz
- Excellent repeatability through IPD* process
- Unpackaged Die Form



X-Series

Available in Low Pass, High Pass and Band Pass designs

Product Overview

Mini-Circuits' X-Series reflectionless filters employ a novel filter topology which absorbs and terminates stop band signals internally rather than reflecting them back to the source. This new capability enables unique applications for filter circuits beyond those suited to traditional approaches. Traditional filters are reflective in the stop band, sending signals back to the source at 100% of the power level which interact with neighboring components and often result in intermodulation and other interferences. Reflectionless filters eliminate stop band reflections, allowing them to be paired with sensitive devices and used in applications that otherwise require circuits such as isolators, isolation amplifiers or attenuators.

Key Features

Easy integration with sensitive reflective components, e.g. mixers, multipliers

Enables stable integration of wideband amplifiers

Cascadable

Excellent power handling in a tiny surface mount device

Excellent repeatability of RF performance

Excellent stability over temperature

Operating Temperature up to 105°C

Unpackaged Die form

Advantages

Reflectionless filters absorb unwanted signals, preventing reflections back to the source. This reduces generation of additional unwanted signals without the need for extra components like attenuators, improving system dynamic range and saving board space.

Because reflectionless filters maintain good impedance in the stop band; they can be integrated with high gain, wideband amplifiers without the risk of creating instabilities in these out of band regions.

Reflectionless filters can be cascaded in multiple sections to provide sharper and higher attenuation, while also preventing any standing waves that could affect pass band signals.

High power handling extends the usability of these filters to the transmit path for inter-stage filtering.

Through semiconductor IPD process, X-series filters are inherently repeatable for large volume production.

With ± 0.3 dB variation over temperature ideal for use in wide temperature range applications without the need for additional temperature compensation.

Suitable for operation close to high power components

Enables direct integration into customer hybrids

*IPD – Integrated Passive Device, is a GaAs semiconductor process



Reflectionless Low Pass Filter Die

XLF-332-D+

50Ω DC to 3250 MHz

Features

- Match to 50Ω in the stop band, eliminates undesired reflections
- Cascadable
- Excellent Power handling
- Protected by US Patent No. 8,392,495



Applications

- Harmonics Rejection
- Wideband Matching
- Transmitters / Receivers

+RoHS Compliant

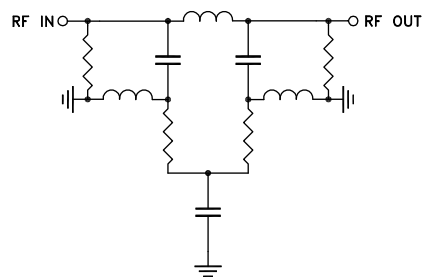
The +Suffix identifies RoHS Compliance. See our web site for RoHS Compliance methodologies and qualifications

Ordering Information: Refer to Last Page

General Description

Mini-Circuits' XLF-332-D+ reflectionless filter die employs a novel filter topology which absorbs and terminates stop band signals internally rather than reflecting them back to the source. This new capability enables unique applications for filter circuits beyond those suited to traditional approaches. Traditional filters are reflective in the stop band, sending signals back to the source at 100% of the power level. These reflections interact with neighboring components and often result in inter-modulation and other interferences. Reflectionless filters eliminate stop band reflections, allowing them to be paired with sensitive devices and used in applications that otherwise require circuits such as isolation amplifiers or attenuators.

Simplified Schematic



Pad	Description
RF-IN	RF Input Pad
RF-OUT	RF Output Pad
Ground	Ground Bonding Pad

Electrical Specifications¹ at 25°C

Parameter		F#	Frequency (MHz)	Min.	Typ.	Max.	Unit
Pass Band	Insertion Loss	DC - F1	DC - 3250		1.4		dB
	Frequency Cut-off	F2	4120		3.0		dB
	VSWR	DC - F1	DC - 3250		1.2		:1
Stop Band	Rejection	F3 - F4	5900 - 17000		15		dB
		F4 - F5	17000 - 30000		19		dB
	VSWR	F3 - F4	5900 - 17000		1.2		:1
		F4 - F5	17000 - 30000		2.0		:1

¹ Measured on Mini-Circuits Characterization test board. Die packaged in 3mm x 3mm, 12-lead MCLP package and soldered on TB-844-332+

Absolute Maximum Ratings^{1,4}

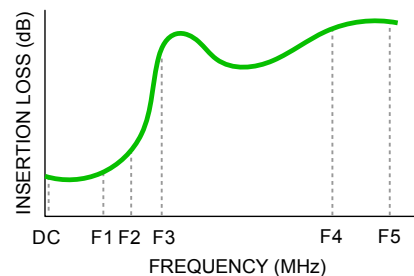
Parameter	Ratings
Operating Temperature	-55°C to +105°C
RF Power Input, Passband (DC-F1) ²	2W at 25°C
RF Power Input, Stopband (F2-F5) ³	0.2W at 25°C

² Passband rating derates linearly to 1W at 105°C ambient

³ Stopband rating derates linearly to 0.1W at 105°C ambient

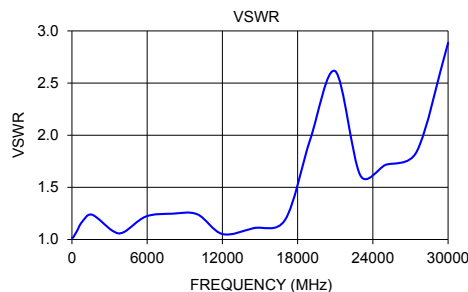
⁴ Permanent damage may occur if any of these limits are exceeded.

Specification Definition



Typical Performance Data at 25°C¹

Frequency (MHz)	Insertion Loss (dB)	VSWR (:1)
10	0.51	1.02
100	0.47	1.02
200	0.47	1.04
400	0.49	1.08
800	0.55	1.17
1600	0.68	1.24
3250	1.34	1.08
4120	3.03	1.07
5900	15.59	1.22
8000	19.18	1.25
10000	15.91	1.24
12000	15.55	1.05
14500	15.84	1.11
17000	15.25	1.19
19000	13.06	1.96
21000	12.79	2.61
23000	18.96	1.62
25000	22.23	1.72
27500	23.07	1.84
30000	24.44	2.89



Die Layout



Fig 1. Die Layout

Bonding Pad Position
(Dimensions in μm , Typical)

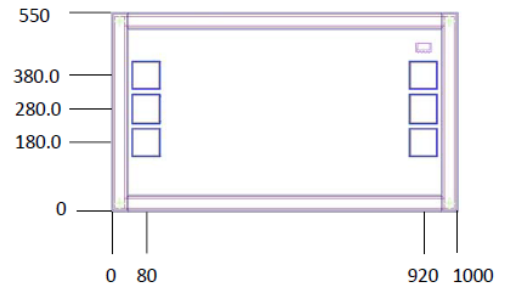


Fig 2. Bonding Pad Positions

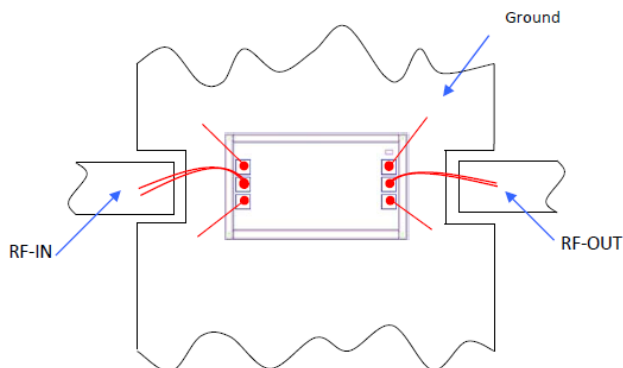
Critical Dimensions

Parameter	Values
Die Thickness, μm	100
Die Width, μm	1000
Die Length, μm	550
Bond Pad Size (Ground pad), μm	75 x 75

Assembly and Handling Procedure

1. Storage
Dice should be stored in a dry nitrogen purged desiccators or equivalent.
2. ESD
MMIC Gallium Arsenide (GaAs) filter dice are susceptible to electrostatic and mechanical damage. Die are supplied in antistatic protected material, which should be opened in clean room conditions at an appropriately grounded anti-static workstation. Devices need careful handling using correctly designed collets, vacuum pickup tips or sharp antistatic tweezers to deter ESD damage to dice.
3. Die Attach
The die mounting surface must be clean and flat. Using conductive silver filled epoxy, recommended epoxies are DieMat DM6030Hk-PT/H579/H579 or Ablestik 84-1LMISR4. Apply sufficient epoxy to meet required epoxy bond line thickness, epoxy fillet height and epoxy coverage around total die periphery. Parts shall be cured in a nitrogen filled atmosphere per manufacturer's cure condition. It is recommended to use antistatic die pick up tools only.
4. Wire Bonding
Bond pad openings in the surface passivation above the bond pads are provided to allow wire bonding to the dice gold bond pads. Thermosonic bonding is used with minimized ultrasonic content. Bond force, time, ultrasonic power and temperature are all critical parameters. Suggested wire is pure gold, 1 mil diameter. Bonds must be made from the bond pads on the die to the package or substrate. All bond wires should be kept as short as low as reasonable to minimize performance degradation due to undesirable series inductance.

Assembly Diagram



Recommended Wire Length, Typical

Wire	Wire Length (mm)	Wire Loop Height (mm)
All wires	1.0	0.15

Note: Use double bond wire at RF IN & RF OUT

Additional Detailed Technical Information	
<i>additional information is available on our dash board.</i>	
Performance Data	Data Table
	Swept Graphs
	S-Parameter (S2P Files) Data Set with and without port extension(.zip file)
Case Style	Die
Die Ordering and packaging information	Quantity, Package
	Small, Gel - Pak: 10,50,100 KGD* XLF-332-DG+
	Medium†, Partial wafer: KGD* <5K XLF-332-DP+
†Available upon request contact sales representative	
Refer to AN-60-067	
Environmental Ratings	ENV-80

*Known Good Dice ("KGD") means that the dice are taken from PCM good wafer and visually inspected according to Mini-Circuits inspection criteria. While this is not definitive, it does help to provide a higher degree of confidence that dice are capable of meeting typical RF electrical parameters specified by Mini-Circuits.

ESD Rating**

Human Body Model (HBM): Class 1A (250V) in accordance with ANSI/ESD STM 5.1 - 2001

** Tested in industry standard MCLP 3x3mm 12 lead package.

Additional Notes

- A. Performance and quality attributes and conditions not expressly stated in this specification document are intended to be excluded and do not form a part of this specification document.
- B. Electrical specifications and performance data contained in this specification document are based on Mini-Circuit's applicable established test performance criteria and measurement instructions.
- C. The parts covered by this specification document are subject to Mini-Circuits standard limited warranty and terms and conditions (collectively, "Standard Terms"); Purchasers of this part are entitled to the rights and benefits contained therein. For a full statement of the Standard Terms and the exclusive rights and remedies thereunder, please visit Mini-Circuits' website at www.minicircuits.com/MCLStore/terms.jsp
- D. Mini-Circuits does not warrant the accuracy or completeness of the information, text, graphics and other items contained within this document and same are provided as an accommodation and on an "As is" basis, with all faults.
- E. Purchasers of this part are solely responsible for proper storing, handling, assembly and processing of Known Good Dice (including, without limitation, proper ESD preventative measures, die preparation, die attach, wire bonding and related assembly and test activities), and Mini-Circuits assumes no responsibility therefor or for environmental effects on Known Good Dice.
- F. Mini-Circuits and the Mini-Circuits logo are registered trademarks of Scientific Components Corporation d/b/a Mini-Circuits. All other third-party trademarks are the property of their respective owners. A reference to any third-party trademark does not constitute or imply any endorsement, affiliation, sponsorship, or recommendation by any such third-party of Mini-Circuits or its products.

Typical Performance Data

FREQ. (MHz)	INSERTION LOSS					GROUP DELAY				
	(dB)					(nsec)				
	@-55°C	@-40°C	@+25°C	@+85°C	@+105°C	@-55°C	@-40°C	@+25°C	@+85°C	@+105°C
10	0.48	0.49	0.52	0.58	0.57	0.13	0.13	0.12	0.17	0.17
20	0.39	0.41	0.44	0.50	0.50	0.12	0.12	0.11	0.15	0.15
40	0.40	0.43	0.46	0.50	0.51	0.11	0.11	0.10	0.13	0.13
50	0.40	0.40	0.45	0.49	0.51	0.10	0.10	0.10	0.12	0.12
60	0.39	0.40	0.46	0.49	0.51	0.10	0.10	0.09	0.11	0.11
70	0.40	0.41	0.46	0.50	0.52	0.09	0.09	0.09	0.10	0.10
80	0.39	0.41	0.45	0.48	0.51	0.08	0.08	0.08	0.09	0.09
90	0.40	0.41	0.45	0.50	0.52	0.08	0.08	0.08	0.09	0.09
100	0.41	0.41	0.46	0.51	0.52	0.08	0.08	0.08	0.09	0.09
200	0.39	0.41	0.46	0.52	0.54	0.08	0.08	0.08	0.08	0.08
300	0.40	0.42	0.47	0.53	0.56	0.08	0.08	0.08	0.08	0.08
400	0.39	0.41	0.49	0.54	0.55	0.08	0.08	0.08	0.08	0.08
500	0.41	0.43	0.49	0.55	0.58	0.08	0.08	0.07	0.08	0.08
600	0.42	0.45	0.52	0.58	0.60	0.08	0.08	0.07	0.08	0.08
700	0.43	0.45	0.52	0.59	0.61	0.07	0.07	0.07	0.08	0.08
800	0.44	0.46	0.54	0.61	0.64	0.08	0.08	0.08	0.08	0.08
900	0.45	0.47	0.56	0.62	0.65	0.08	0.08	0.07	0.08	0.08
1000	0.46	0.48	0.57	0.64	0.67	0.08	0.07	0.07	0.08	0.08
1100	0.47	0.50	0.58	0.66	0.69	0.08	0.08	0.07	0.08	0.08
1200	0.48	0.51	0.60	0.68	0.71	0.08	0.08	0.07	0.08	0.08
1300	0.50	0.52	0.62	0.70	0.73	0.08	0.08	0.07	0.08	0.08
1400	0.51	0.54	0.64	0.72	0.75	0.08	0.08	0.07	0.08	0.08
1500	0.51	0.55	0.65	0.73	0.76	0.08	0.08	0.08	0.08	0.08
1600	0.53	0.56	0.67	0.75	0.79	0.08	0.08	0.08	0.08	0.08
1700	0.55	0.58	0.69	0.77	0.81	0.08	0.08	0.08	0.08	0.08
1800	0.56	0.59	0.70	0.79	0.82	0.08	0.08	0.08	0.08	0.08
1900	0.57	0.60	0.72	0.81	0.84	0.08	0.08	0.08	0.08	0.08
2000	0.58	0.61	0.73	0.82	0.86	0.08	0.08	0.08	0.08	0.08
2200	0.62	0.66	0.78	0.87	0.91	0.08	0.08	0.08	0.09	0.09
2400	0.66	0.70	0.83	0.93	0.97	0.09	0.09	0.09	0.09	0.09
2600	0.71	0.76	0.90	1.00	1.04	0.09	0.09	0.09	0.09	0.10
2800	0.80	0.84	1.00	1.11	1.15	0.10	0.10	0.10	0.10	0.10
3000	0.91	0.95	1.12	1.24	1.29	0.10	0.10	0.10	0.10	0.10
3250	1.10	1.15	1.34	1.47	1.53	0.11	0.11	0.11	0.11	0.11
3400	1.26	1.31	1.51	1.65	1.71	0.11	0.11	0.11	0.11	0.11
3500	1.38	1.44	1.65	1.80	1.86	0.11	0.11	0.11	0.11	0.12
3600	1.53	1.59	1.81	1.97	2.03	0.11	0.11	0.11	0.11	0.12
3700	1.69	1.75	1.98	2.15	2.22	0.12	0.12	0.12	0.12	0.12
3800	1.88	1.94	2.18	2.37	2.43	0.12	0.12	0.12	0.12	0.12
3900	2.09	2.16	2.41	2.61	2.68	0.12	0.12	0.12	0.12	0.12
4000	2.33	2.41	2.67	2.88	2.96	0.12	0.12	0.12	0.12	0.13
4120	2.67	2.74	3.03	3.25	3.33	0.12	0.12	0.12	0.12	0.12
4500	4.06	4.16	4.49	4.77	4.87	0.13	0.13	0.12	0.12	0.12
5000	6.83	6.95	7.36	7.69	7.81	0.12	0.11	0.11	0.11	0.11
5900	14.89	15.04	15.60	16.04	16.19	0.05	0.05	0.04	0.03	0.03
6000	16.12	16.26	16.83	17.31	17.45	0.04	0.04	0.03	0.02	0.02
6500	24.12	24.21	24.68	24.96	24.98	-0.15	-0.16	-0.21	-0.23	-0.25
7000	28.13	27.92	26.90	26.10	25.88	-0.35	-0.32	-0.27	-0.23	-0.21
7500	22.27	22.18	21.87	21.59	21.52	-0.01	-0.01	-0.01	-0.01	-0.01
8000	19.25	19.22	19.19	19.09	19.10	0.03	0.03	0.03	0.02	0.03
8500	17.62	17.64	17.67	17.66	17.71	0.04	0.04	0.04	0.04	0.04
9000	16.64	16.68	16.78	16.82	16.86	0.04	0.04	0.04	0.04	0.04
9500	16.05	16.08	16.25	16.31	16.35	0.04	0.04	0.04	0.04	0.04
10000	15.65	15.71	15.89	16.02	16.05	0.04	0.04	0.04	0.04	0.05
10500	15.42	15.49	15.69	15.82	15.88	0.04	0.04	0.04	0.04	0.04
11000	15.30	15.36	15.57	15.72	15.81	0.04	0.04	0.04	0.04	0.04
11500	15.21	15.28	15.52	15.69	15.75	0.04	0.04	0.04	0.04	0.04
12000	15.21	15.27	15.52	15.70	15.79	0.04	0.04	0.04	0.04	0.04
13000	15.30	15.36	15.65	15.82	15.91	0.04	0.04	0.04	0.04	0.04
14000	15.42	15.51	15.79	15.97	16.04	0.04	0.04	0.03	0.04	0.04
15000	15.46	15.54	15.84	16.02	16.10	0.04	0.04	0.04	0.05	0.04
16000	15.32	15.40	15.69	15.87	15.95	0.04	0.04	0.04	0.05	0.05
17000	14.89	14.96	15.24	15.40	15.46	0.05	0.05	0.05	0.05	0.05
18000	13.96	14.03	14.32	14.45	14.52	0.06	0.06	0.06	0.07	0.07
19000	12.57	12.64	13.02	13.25	13.32	0.09	0.09	0.09	0.09	0.09
20000	11.81	11.90	11.99	12.38	12.57	0.08	0.07	0.12	0.13	0.13
22000	14.74	14.99	16.02	16.79	17.05	0.08	0.09	0.08	0.08	0.08
24000	20.11	20.26	20.95	21.45	21.62	0.05	0.05	0.04	0.05	0.05
26000	22.09	22.24	22.82	23.22	23.35	0.04	0.03	0.04	0.05	0.05
28000	22.38	22.58	23.10	23.61	23.84	0.05	0.05	0.05	0.05	0.04
30000	23.37	23.59	24.21	24.63	24.81	0.05	0.04	0.05	0.08	0.05
32000	26.66	26.77	27.44	27.96	28.06	0.02	0.00	0.00	0.02	0.01
34000	30.88	30.65	30.14	29.86	30.28	-0.15	-0.13	-0.01	0.08	0.01
36000	28.01	28.31	28.66	29.28	29.32	-0.02	0.02	-0.04	0.01	-0.04
38000	25.32	25.42	25.90	26.06	26.02	0.04	0.08	0.07	0.03	0.07
40000	24.46	24.76	25.40	26.08	26.39	0.16	-0.05	0.17	0.12	-0.09

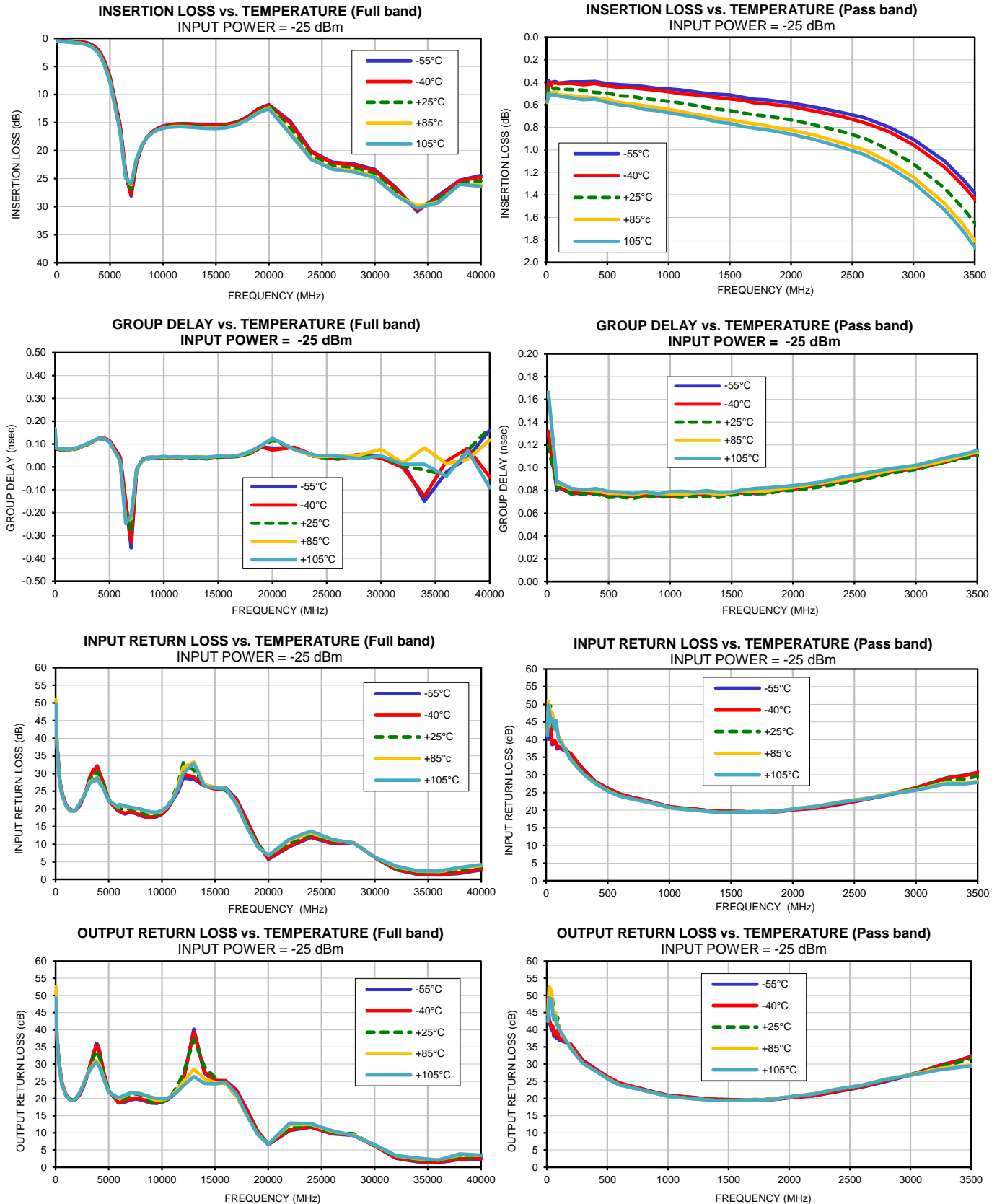


Typical Performance Data

FREQ. (MHz)	INPUT RETURN LOSS					OUTPUT RETURN LOSS				
	(dB)					(dB)				
	@-55°C	@-40°C	@+25°C	@+85°C	@+105°C	@-55°C	@-40°C	@+25°C	@+85°C	@+105°C
10	40.97	41.96	43.81	41.82	41.12	48.07	48.97	46.02	44.34	42.42
20	40.10	41.79	48.64	50.98	49.72	42.60	43.00	51.45	52.64	49.33
40	41.63	43.14	49.63	46.46	44.90	40.00	40.81	50.44	51.20	48.68
50	38.60	38.87	43.93	47.71	45.96	40.03	41.04	48.42	46.12	44.07
60	38.88	39.75	45.08	45.75	44.50	38.05	38.43	42.81	43.64	43.33
70	38.78	39.75	43.50	43.50	42.99	38.96	39.43	45.10	45.07	43.99
80	38.91	39.27	44.56	45.54	45.46	37.49	38.62	41.61	42.68	41.65
90	37.35	37.88	40.98	43.15	42.84	39.20	39.90	43.50	41.42	41.22
100	37.88	38.09	40.87	40.86	40.34	37.07	37.59	39.98	40.43	40.31
200	35.82	36.03	34.94	34.40	34.25	35.73	35.62	34.57	34.61	34.37
300	31.70	31.50	30.54	30.26	30.29	31.02	30.92	30.25	30.11	30.17
400	28.12	27.97	27.80	27.64	27.56	28.66	28.49	28.13	28.09	28.08
500	26.22	26.13	25.69	25.53	25.39	26.42	26.35	25.84	25.83	25.71
600	24.61	24.55	24.17	24.02	23.96	24.52	24.45	24.11	23.98	23.90
700	23.59	23.49	23.15	23.09	23.15	23.59	23.50	23.23	23.18	23.18
800	22.89	22.83	22.45	22.48	22.47	22.73	22.65	22.31	22.32	22.34
900	21.90	21.85	21.62	21.63	21.65	21.77	21.72	21.48	21.49	21.51
1000	21.03	21.00	20.83	20.71	20.77	20.94	20.89	20.68	20.61	20.65
1100	20.61	20.61	20.43	20.31	20.28	20.64	20.61	20.41	20.26	20.26
1200	20.36	20.35	20.20	20.06	20.03	20.32	20.31	20.12	19.96	19.98
1300	19.98	19.98	19.82	19.70	19.70	19.96	19.94	19.78	19.67	19.70
1400	19.70	19.68	19.52	19.40	19.36	19.75	19.74	19.57	19.44	19.42
1500	19.64	19.68	19.56	19.39	19.37	19.67	19.71	19.55	19.40	19.39
1600	19.55	19.57	19.60	19.50	19.51	19.55	19.58	19.57	19.49	19.50
1700	19.37	19.44	19.58	19.52	19.53	19.56	19.60	19.70	19.66	19.68
1800	19.44	19.50	19.66	19.59	19.58	19.56	19.62	19.72	19.67	19.64
1900	19.63	19.68	19.84	19.75	19.73	19.79	19.84	20.03	19.92	19.91
2000	20.05	20.13	20.34	20.36	20.31	20.19	20.27	20.49	20.49	20.48
2200	20.58	20.69	21.09	21.13	21.11	20.77	20.85	21.30	21.38	21.30
2400	21.80	21.90	22.34	22.45	22.39	22.06	22.17	22.51	22.80	22.74
2600	23.08	23.18	23.28	23.37	23.22	23.34	23.46	23.75	23.91	23.85
2800	24.49	24.63	24.73	24.71	24.57	25.02	25.17	25.39	25.60	25.60
3000	26.32	26.39	26.11	25.78	25.64	26.82	26.97	26.91	26.85	26.73
3250	29.15	29.13	28.40	27.78	27.46	29.73	29.72	29.34	28.79	28.42
3400	29.95	29.83	28.90	27.76	27.45	31.04	31.02	30.55	29.28	29.03
3500	30.66	30.62	29.65	28.21	27.88	32.28	32.17	31.65	29.74	29.51
3600	31.24	31.28	30.20	28.52	28.20	33.64	33.52	32.51	30.37	29.88
3700	31.09	31.17	30.01	28.27	27.91	34.35	34.11	32.75	30.52	30.04
3800	31.70	31.62	30.14	28.57	28.35	35.87	35.44	33.66	31.07	30.56
3900	32.17	31.93	30.34	28.95	28.82	35.86	35.32	33.71	30.84	30.12
4000	31.46	31.40	30.16	28.76	28.37	35.38	34.71	33.05	30.36	29.70
4120	30.28	30.20	29.15	27.69	27.31	33.97	33.49	31.96	29.83	29.23
4500	27.42	27.49	26.79	25.88	25.80	28.10	27.86	27.34	26.24	25.92
5000	22.35	22.45	22.60	22.32	22.24	22.32	22.33	22.30	21.94	21.84
5900	19.33	19.50	19.99	20.49	20.62	18.71	18.87	19.42	19.99	20.23
6000	19.25	19.40	20.08	20.96	21.30	18.73	18.86	19.44	20.01	20.31
6500	18.55	18.71	19.86	20.71	20.81	18.94	19.14	19.92	20.77	21.05
7000	19.05	19.17	20.07	20.43	20.48	19.58	19.82	20.93	21.63	21.63
7500	18.67	18.84	19.71	20.09	20.21	19.85	20.12	21.38	21.66	21.56
8000	18.10	18.24	19.27	19.88	19.92	19.62	19.89	20.99	21.43	21.39
8500	17.58	17.74	18.43	19.28	19.49	19.17	19.38	19.98	20.72	20.88
9000	17.55	17.68	18.21	18.85	19.15	18.68	18.81	19.09	19.93	20.38
9500	17.76	17.87	18.42	18.87	19.08	18.60	18.67	18.71	19.50	20.00
10000	18.52	18.63	19.07	19.32	19.54	18.91	19.00	19.02	19.60	19.96
10500	19.93	20.08	20.56	20.64	20.66	19.64	19.72	19.80	19.96	20.11
11000	22.39	22.62	23.36	22.81	22.61	20.73	20.85	21.36	21.07	20.85
11500	24.82	25.26	26.89	26.21	25.68	22.35	22.62	23.91	22.76	22.08
12000	28.74	29.68	33.09	31.72	30.11	25.04	25.35	27.37	24.83	23.73
13000	28.41	29.06	30.91	33.32	32.91	40.20	39.40	37.14	28.58	26.42
14000	26.46	26.46	26.87	26.86	26.39	27.43	27.76	29.22	25.70	24.37
15000	25.82	25.61	25.88	26.15	25.93	24.91	25.24	26.11	24.62	24.28
16000	25.90	25.43	25.27	25.76	25.71	25.10	25.16	24.28	24.36	24.71
17000	22.77	22.40	21.64	21.45	21.21	22.50	22.30	20.63	20.81	21.33
18000	16.61	16.27	15.41	14.82	14.64	16.82	16.61	15.29	15.01	15.10
19000	10.26	10.15	9.81	9.33	9.21	10.55	10.52	10.19	9.69	9.51
20000	5.71	5.92	6.69	6.82	6.86	6.59	6.63	6.78	6.74	6.67
22000	9.30	9.52	10.51	11.16	11.47	10.69	10.83	11.36	12.36	12.84
24000	11.95	12.11	12.61	13.26	13.70	11.65	11.72	12.16	12.49	12.71
26000	10.18	10.35	10.97	11.24	11.36	9.72	9.78	9.99	10.42	10.63
28000	10.38	10.41	10.37	10.31	10.28	9.24	9.38	9.77	9.41	9.19
30000	6.25	6.24	6.33	6.34	6.30	6.22	6.26	6.24	6.47	6.58
32000	2.78	2.85	3.16	3.57	3.81	2.62	2.74	3.17	3.32	3.40
34000	1.50	1.60	2.17	2.41	2.48	1.63	1.74	2.04	2.50	2.65
36000	1.25	1.36	1.93	2.22	2.40	1.30	1.44	2.00	2.13	2.09
38000	1.73	1.92	2.81	3.32	3.46	2.24	2.39	2.91	3.53	3.88
40000	2.69	2.84	3.46	3.96	4.19	2.39	2.57	3.23	3.50	3.51



Typical Performance Curves





All Mini-Circuits products are manufactured under exacting quality assurance and control standards, and are capable of meeting published specifications after being subjected to any or all of the following physical and environmental test.

Specification	Test/Inspection Condition	Reference/Spec
Operating Temperature	-40° to 85° C or -40° to 105° C or -55° to 105° C or -45° to 105° C Ambient Environment	Refer to Individual Model Data Sheet
Storage Environment (Die)	-65° to 150°C	Individual Model Data Sheet
Storage Environment(Packaging)	-40° to 70°C and 40 to 60% humidity (In Factory Shipped Package)	