

Solid state

# USB RF SP4T Switch

## USB-SP4T-63

50Ω 1 to 6000 MHz

### The Big Deal

- USB power & control
- High speed switch transition (3 μsec typ)
- High power handling (+27 dBm max)
- Small case (2.25" x 1.50" x 0.475")

### Typical Applications

- R&D
- Signal routing / switch matrices
- High volume production testing / ATE
- Design verification testing

### Product Overview

Mini-Circuits' USB-SP4T-63 is a low cost, absorptive SP4T switch with USB control. The fast switching, solid state switch operates from 1 MHz to 6000 MHz with 3 μs typical switch transition speed. High linearity (+54 dBm typ IP3), and high isolation (50 dB typical) allow the model to be used for a wide variety of RF applications.

Full software support is provided for USB control, including our user-friendly GUI application for Windows and a full API with programming instructions for Windows and Linux environments (both 32-bit and 64-bit systems). The latest version of the full software package can be downloaded from <https://www.minicircuits.com/softwaredownload/solidstate.html> at any time.

The USB-SP4T-63 is housed in a compact, low profile, rugged metal case (2.25" x 1.50" x 0.475") with 5 SMA (F) connectors (COM, and J1 to J4), and a USB Mini-B port for power and control.

### Key Features

Feature	Advantages
RF SP4T absorptive switch	Wideband (1 to 6000 MHz) with low insertion loss (1.25 dB typ.), high isolation (50 dB typ.), and high power rating (+27 dBm through path).
High Linearity (IP3 54 dBm typ.)	Results in little or negligible inter-modulation generation, meeting requirements for digital communications signals
DC Blocking	No need for external DC blocking circuitry
Programmable switching sequence	The USB-SP4T-63 allows the user to set up a sequence of up to 100 switching settings (from 5 μsec to 10 seconds) to run automatically without waiting for commands from the PC.
Full software support included	Mini-Circuits' full software package, programming and user manual are available for download from <a href="https://www.minicircuits.com/softwaredownload/solidstate.html">https://www.minicircuits.com/softwaredownload/solidstate.html</a> at no extra cost.

**Trademarks:** Windows is a registered trademark of Microsoft Corporation in the United States and other countries. Linux is a registered trademark of Linus Torvalds. Pentium is a registered trademark of Intel Corporation. Neither Mini-Circuits nor the Mini-Circuits USB-SP4T-63 are affiliated with or endorsed by the owners of the above referenced trademarks

Mini-Circuits and the Mini-Circuits logo are registered trademarks of Scientific Components Corporation.



Case Style: NR1982

Software Package

#### Included Accessories

Model No.	Description	Qty.
MUSB-CBL-3+	2.6 ft USB cable	1

#### RoHS Compliant

See our web site for RoHS Compliance methodologies and qualifications

## Electrical Specifications

Parameter	Port	Conditions	Min.	Typ.	Max.	Units
Operating Frequency			1		6000	MHz
Insertion Loss	COM to any active port	1 to 3000 MHz	-	1.0	2.0	dB
		3000 to 6000 MHz	-	1.6	3.0	
Isolation	Between ports J1,J2,J3, and J4	1 to 500 MHz	50	85	-	dB
		500 to 5000 MHz	35	60		
		5000 to 6000 MHz	33	55	-	
	COM to any terminated port	1 to 500 MHz	55	85		
		500 to 5000 MHz	30	50		
		5000 to 6000 MHz	25	40	-	
VSWR	COM port	1 to 3000 MHz	-	1.10	1.40	:1
		3000 to 6000 MHz	-	1.15	1.60	
	Any port connected to COM	1 to 3000 MHz	-	1.20	1.50	
		3000 to 6000 MHz	-	1.20	1.55	
	Any terminated port	1 to 3000 MHz	-	1.10	1.60	
		3000 to 6000 MHz	-	1.25	2.00	
Power Input @ 1 dB Compression <sup>1,2</sup>	COM to any active port	10 to 6000 MHz	30	-	-	dBm
IP3 <sup>3</sup>	COM to any active port	10 to 6000 MHz	-	54	-	dBm
Transition Time <sup>4</sup>	-	-	-	3	8	µs
Minimum dwell time <sup>5</sup>	High Speed Mode	-	-	5	-	µs
Switching Time (USB) <sup>6</sup>	-	-	-	2	-	ms
Minimum dwell time	-	Using switching sequence function	-	5	-	µsec
Rated voltage	USB port	-	4.75	5	5.25	V
Rated Current		-	-	30	80	mA
Operating RF Input Power	COM to any active port	Hot Switching	-	-	+17	dBm
	Any terminated port	-	-	-	+17	
	COM to any active port	Through path <sup>1</sup>	-	-	+27	

<sup>1</sup> Max operating power degrades linearly below 10 MHz to +22 dBm at 1 MHz.

<sup>2</sup> Note absolute maximum ratings in table below

<sup>3</sup> Tested with 1 MHz span between signals.

<sup>4</sup> Transition time spec represents the time that the RF signal paths are interrupted during switching and thus is specified without communication delays.

<sup>5</sup> Minimum dwell time is the shortest time that can be achieved between 2 switch transitions when programming an automated switch sequence.

<sup>6</sup> Switching time(USB) is the time from issuing a single software command via USB to the switch state changing. The most significant factor is the host PC, influenced by CPU load and USB protocol. The time shown is an estimate for a medium CPU load and USB 2.0 connection.

## Absolute Maximum Ratings

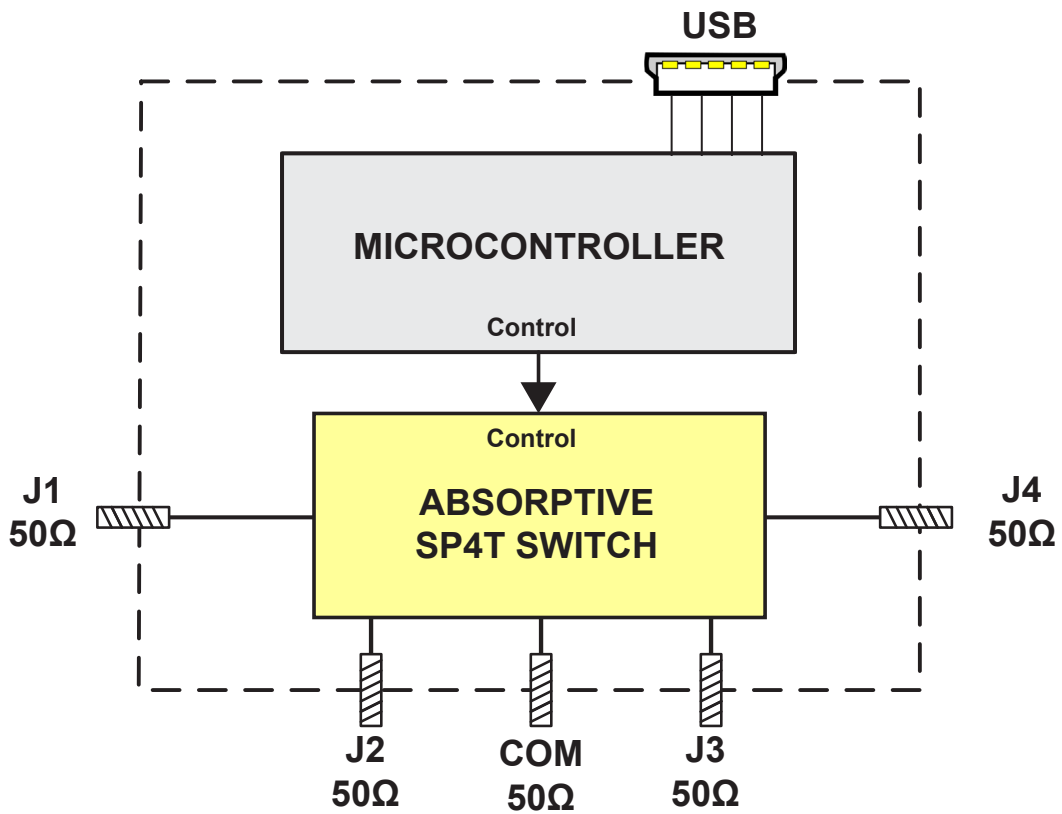
Operating Temperature	0°C to 50°C
Storage Temperature	-20°C to 60°C
DC supply voltage max.	6V
RF power @ 1 -6000 MHz into termination	+20 dBm
RF power @ 10 -6000 MHz into COM or active port	+30 dBm
RF power @ 1 -10 MHz into COM or active port	+25 dBm
DC voltage @ RF Ports	16V

Permanent damage may occur if any of these limits are exceeded. Operating in the range between operating power limits and absolute maximum ratings for extended periods of time may result in reduced life and reliability.

## Connections

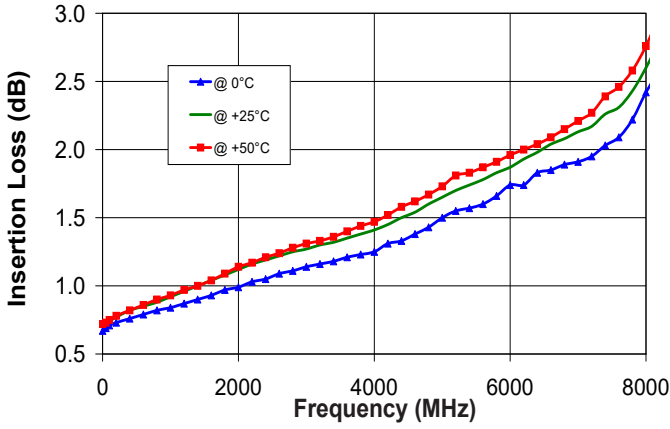
RF Switch (J1, J2, J3, J4, COM)	(SMA female)
USB	(USB type Mini-B receptacle)

Block Diagram

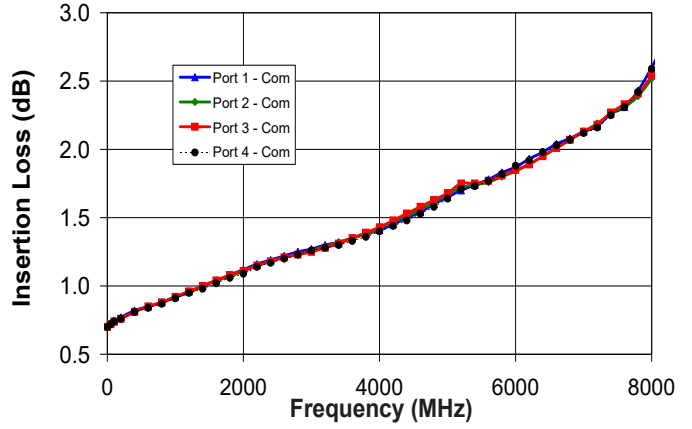


## Typical Performance Curves

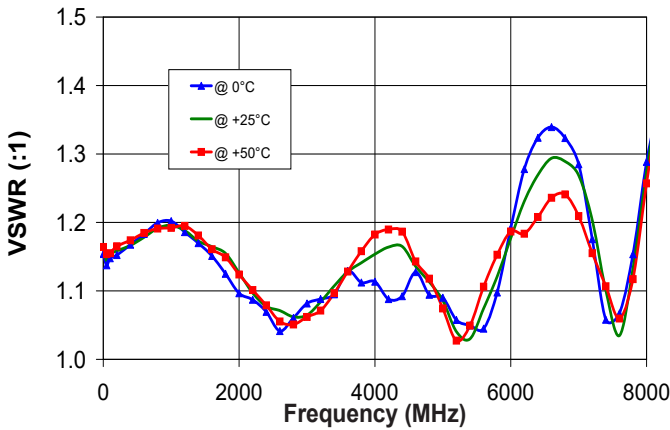
Insertion Loss over Temperature



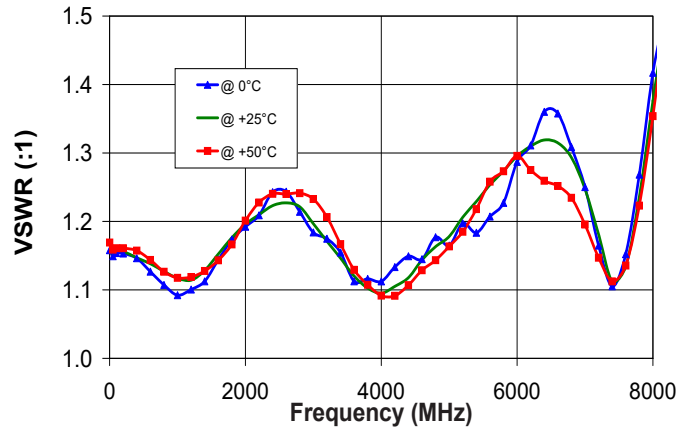
Insertion Loss at Ports 1-4 vs. Frequency



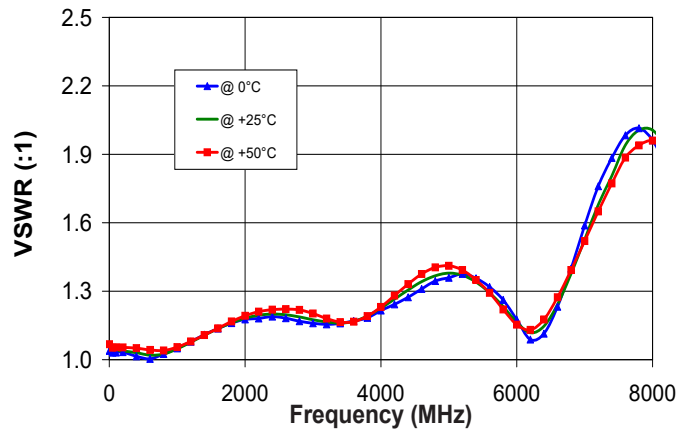
Common Port VSWR over Temp.



Active Port VSWR over Temp.

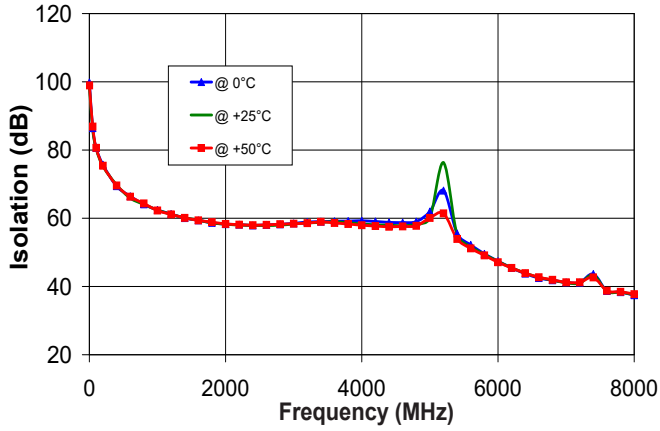


Internal Term. VSWR over Temp.

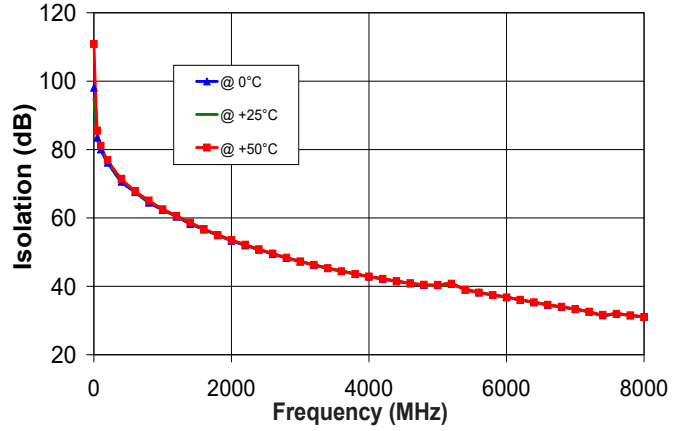


Typical Performance Curves (Continued)

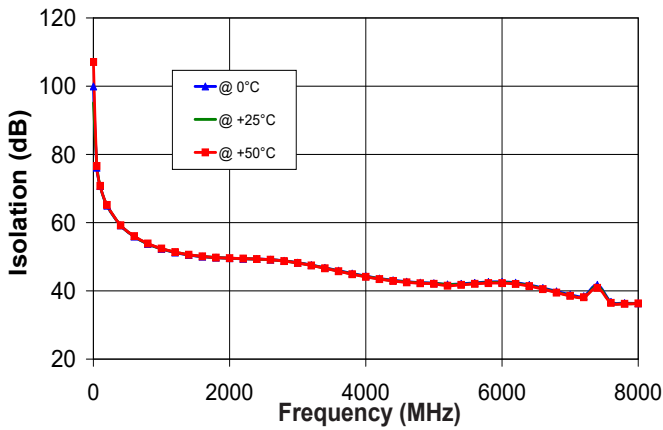
Com to Port 1 Isolation with Port 4 active



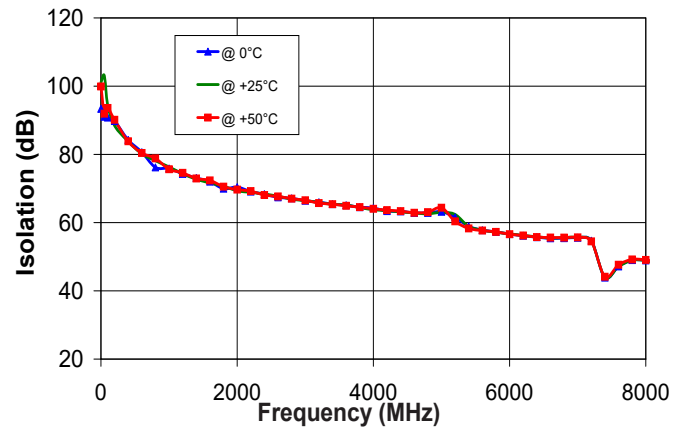
Com to Port 1 Isolation with Port 2 active



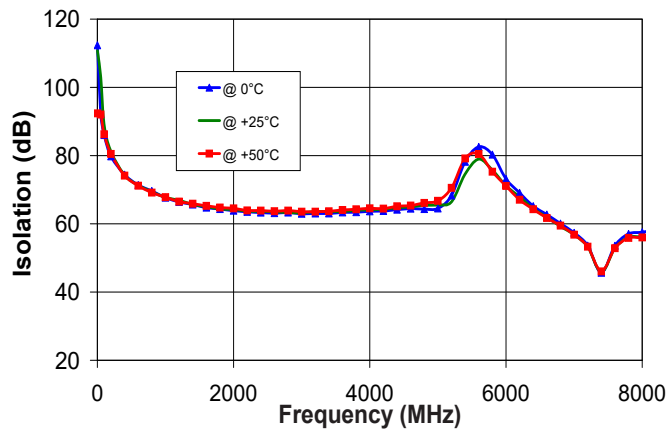
Port 1 to Port 2 Isolation with Port 4 active



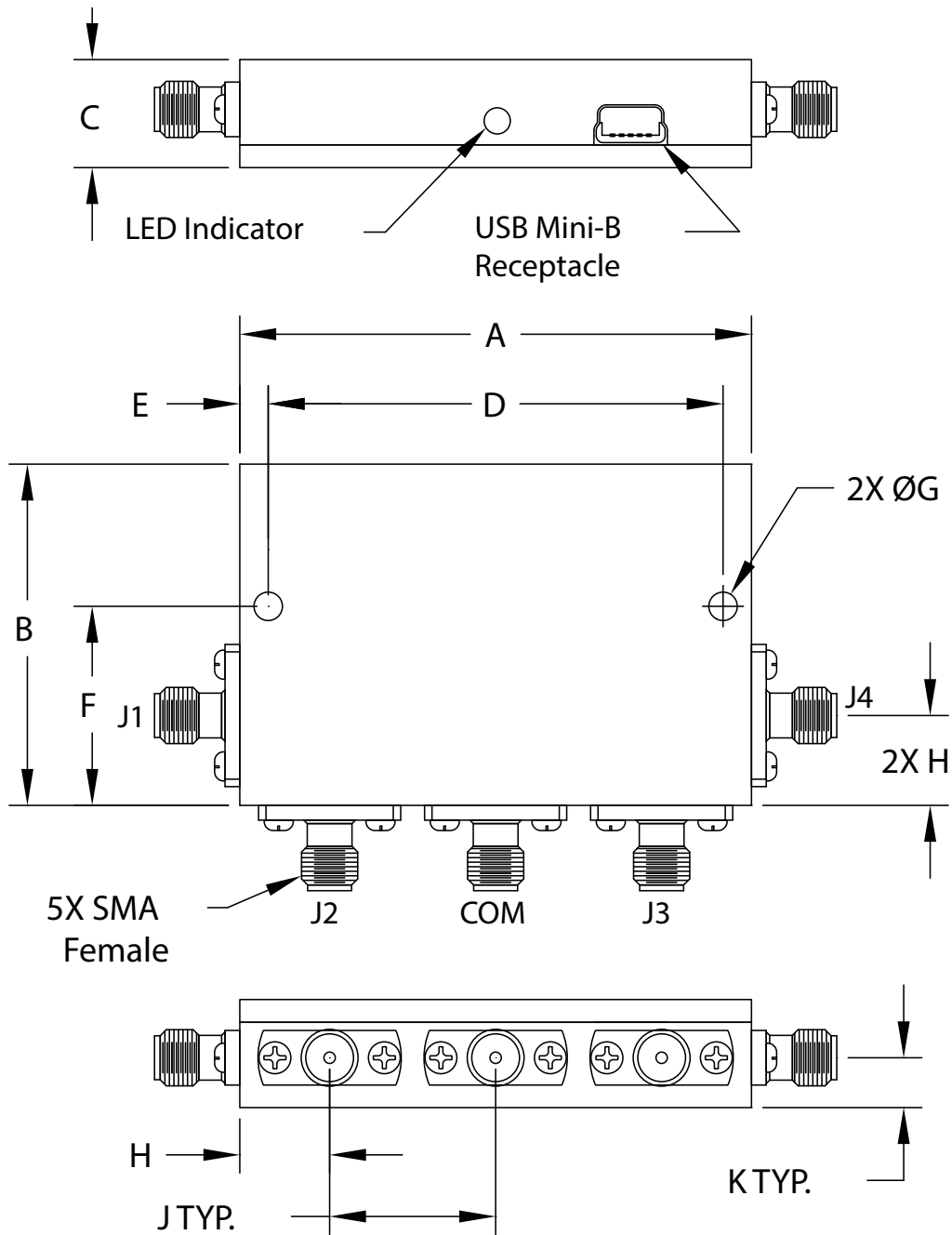
Port 1 to Port 3 Isolation with Port 4 active



Port 2 to Port 3 Isolation with Port 4 active



## Outline Drawing (NR1982)



## Outline Dimensions ( $\frac{\text{inch}}{\text{mm}}$ )

A	B	C	D	E	F	G	H	J	K	WT. GRAMS
2.25	1.50	0.475	2.000	0.125	0.875	0.125	0.395	.730	0.219	85
57.2	38.1	12.07	50.80	3.18	22.23	3.18	10.03	18.54	5.56	

## Software & Documentation Download:

- Mini-Circuits' full software and support package including user guide, Windows GUI, DLL files, programming manual and examples can be downloaded free of charge from <https://www.minicircuits.com/softwaredownload/solidstate.html>
- Please contact [testsolutions@minicircuits.com](mailto:testsolutions@minicircuits.com) for support

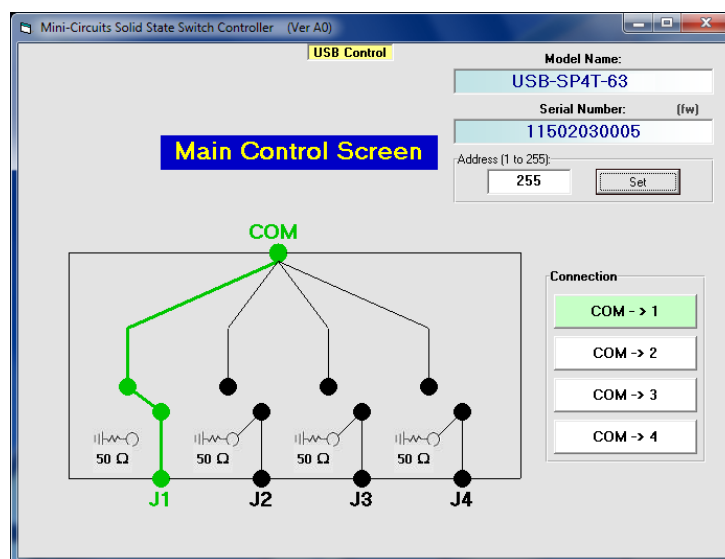
## Minimum System Requirements

Parameter	Requirements	
Interface	USB HID	
System requirements	GUI:	Windows 32 & 64 bit systems from Windows 98 up to Windows 10
	USB API (ActiveX & .Net)	Windows 32 & 64 bit systems with ActiveX or .Net support from Windows 98 up to Windows 10
	USB direct programming support	Linux, Windows systems from Windows 98 up to Windows 10
Hardware	Pentium® II or higher, RAM 256 MB	

## Graphical User Interface (GUI) for Windows

### Key Features:

- Set each switch manually
- Set timed sequence of switching states
- Configure switch address and upgrade Firmware



## Application Programming Interface (API)

### Windows Support:


- API DLL files exposing the full switch functionality
  - ActiveX COM DLL file for creation of 32-bit programs
  - .Net library DLL file for creation of 32 / 64-bit programs
- Supported by most common programming environments (refer to application note [AN-49-001](#) for summary of tested environments)

### Linux Support:

- Full switch control in a Linux environment is achieved by way of USB interrupt commands. See programming manual at [https://www.minicircuits.com/softwaredownload/Prog\\_Manual-Solid\\_State\\_Switch.pdf](https://www.minicircuits.com/softwaredownload/Prog_Manual-Solid_State_Switch.pdf) for details

Ordering, Pricing & Availability Information see our web site

Model	Description
USB-SP4T-63	USB RF SP4T Switch

Included Accessories	Part No.	Description
	MUSB-CBL-3+	2.6 ft (0.8 m) USB Cable: USB type A(Male) to USB type Mini-B(Male)

Optional Accessories	Description
MUSB-CBL-3+ (Spare)	2.6 ft (0.8 m) USB Cable: USB type A(Male) to USB type Mini-B(Male)
MUSB-CBL-7+	6.6 ft (2.0 m) USB Cable: USB type A(Male) to USB type Mini-B(Male)

### Additional Notes

- A. Performance and quality attributes and conditions not expressly stated in this specification document are intended to be excluded and do not form a part of this specification document.
- B. Electrical specifications and performance data contained in this specification document are based on Mini-Circuit's applicable established test performance criteria and measurement instructions.
- C. The parts covered by this specification document are subject to Mini-Circuits standard limited warranty and terms and conditions (collectively, "Standard Terms"); Purchasers of this part are entitled to the rights and benefits contained therein. For a full statement of the Standard Terms and the exclusive rights and remedies thereunder, please visit Mini-Circuits' website at [www.minicircuits.com/MCLStore/terms.jsp](http://www.minicircuits.com/MCLStore/terms.jsp)



# Solid State USB RF SP4T Switch

## Typical Performance Data

# USB-SP4T-63

TEST CONDITIONS: @Temperature = +25degC

FREQUENCY (MHz)	INSERTION LOSS				ISOLATION							
	(dB)				(dB)							
	COM-J1	COM-J2	COM-J3	COM-J4	COM-J1	COM-J1	COM-J1	J1-J2	J1-J2	J1-J4	J1-J4	
				J2 Active	J3 Active	J4 Active	J3 Active	J4 Active	J2 Active	J3 Active		
1	0.67	0.67	0.67	0.67	100.64	99.97	94.01	108.56	99.48	101.21	99.37	
5	0.67	0.68	0.67	0.68	93.87	100.98	97.40	91.56	98.04	102.75	95.35	
10	0.68	0.68	0.68	0.68	94.38	97.28	109.47	90.16	89.57	95.97	99.55	
40	0.69	0.69	0.69	0.69	86.02	88.90	88.27	78.31	79.74	96.95	101.20	
50	0.70	0.69	0.70	0.70	85.37	89.34	85.45	77.67	76.67	93.09	90.86	
60	0.70	0.70	0.70	0.70	81.22	96.70	84.48	74.70	75.62	92.03	88.09	
70	0.71	0.71	0.71	0.71	82.00	85.19	84.37	73.56	73.99	90.43	89.25	
80	0.71	0.71	0.71	0.71	81.45	85.97	82.65	72.80	73.03	92.59	90.40	
90	0.71	0.71	0.71	0.71	80.17	86.55	81.42	71.70	72.16	90.16	88.94	
100	0.71	0.71	0.71	0.72	79.71	84.29	81.12	70.99	70.91	89.56	88.92	
200	0.74	0.74	0.74	0.75	74.31	79.36	75.99	65.27	65.42	83.96	83.65	
300	0.76	0.76	0.76	0.77	71.28	75.15	72.02	61.86	61.71	80.48	79.14	
400	0.79	0.78	0.79	0.79	68.95	73.13	69.49	59.48	59.40	77.69	78.00	
500	0.80	0.80	0.81	0.81	67.46	71.26	67.64	57.72	57.61	75.44	75.73	
600	0.82	0.82	0.83	0.83	65.61	69.95	66.31	56.22	56.17	74.16	74.17	
700	0.84	0.84	0.85	0.84	64.32	68.49	65.04	55.03	54.95	73.56	73.82	
800	0.86	0.86	0.87	0.86	63.19	67.61	64.29	54.08	54.11	72.70	71.98	
900	0.87	0.87	0.88	0.88	61.69	66.21	63.18	53.31	53.34	71.37	71.79	
1000	0.89	0.90	0.90	0.90	60.89	65.67	62.35	52.57	52.57	71.05	70.73	
1100	0.91	0.91	0.92	0.92	59.77	64.87	61.61	52.02	52.04	70.50	70.51	
1200	0.93	0.94	0.94	0.94	59.06	64.14	60.90	51.56	51.60	69.87	69.54	
1300	0.95	0.95	0.96	0.96	58.06	63.19	60.51	51.15	51.13	69.42	68.90	
1400	0.97	0.97	0.98	0.98	57.35	62.82	59.74	50.84	50.81	68.50	68.62	
1500	0.98	0.99	1.00	1.00	56.46	62.02	59.31	50.58	50.55	68.18	68.41	
1600	1.00	1.01	1.02	1.02	55.84	61.57	58.92	50.39	50.35	67.84	67.96	
1700	1.03	1.03	1.04	1.05	54.96	60.82	58.55	50.25	50.21	67.73	67.89	
1800	1.04	1.05	1.05	1.07	54.30	60.45	58.16	50.13	50.09	67.66	67.50	
1900	1.06	1.07	1.07	1.09	53.59	59.89	57.94	50.10	50.05	67.29	67.26	
2000	1.08	1.09	1.09	1.11	52.96	59.50	57.73	50.00	50.00	67.24	66.97	
2200	1.11	1.12	1.12	1.15	51.65	58.32	57.36	49.93	49.92	66.52	66.58	
2400	1.14	1.16	1.16	1.18	50.46	57.70	57.23	49.89	49.89	66.69	66.54	
2600	1.17	1.18	1.19	1.21	49.31	56.78	57.21	49.68	49.72	66.59	66.58	
2800	1.20	1.21	1.21	1.23	48.21	55.95	57.46	49.34	49.31	66.40	66.21	
3000	1.23	1.24	1.24	1.25	47.17	55.03	57.46	48.79	48.81	66.34	66.21	
3200	1.26	1.28	1.28	1.27	46.24	54.26	57.40	48.08	48.09	66.50	66.48	
3400	1.29	1.31	1.31	1.30	45.31	53.43	57.28	47.24	47.22	66.36	66.25	
3600	1.33	1.35	1.35	1.33	44.46	52.55	56.81	46.41	46.38	66.35	66.47	
3800	1.37	1.39	1.39	1.37	43.70	51.81	56.38	45.56	45.57	66.55	66.53	
4000	1.41	1.44	1.43	1.41	43.00	51.04	55.76	44.84	44.88	66.62	66.72	
4200	1.45	1.49	1.49	1.47	42.31	50.35	55.21	44.19	44.22	67.13	67.06	
4400	1.50	1.55	1.54	1.52	41.74	49.65	54.86	43.75	43.77	67.85	67.83	
4600	1.55	1.60	1.58	1.57	41.25	49.14	54.47	43.34	43.35	68.59	68.19	
4800	1.60	1.65	1.64	1.62	41.12	49.18	54.10	42.94	42.96	69.46	69.38	
5000	1.66	1.72	1.72	1.70	42.12	52.48	53.80	41.81	41.85	66.14	65.67	
5200	1.69	1.73	1.73	1.72	41.68	55.47	54.47	41.14	41.14	61.55	61.61	
5400	1.72	1.75	1.74	1.75	39.69	49.14	54.18	42.00	42.02	62.25	62.06	
5600	1.77	1.78	1.76	1.81	38.58	46.94	51.79	42.71	42.77	61.60	61.65	
5800	1.82	1.82	1.80	1.88	37.67	45.44	49.71	43.41	43.44	61.30	61.39	
6000	1.89	1.87	1.86	1.96	36.81	43.99	47.51	43.91	43.93	60.41	60.68	

**Notes**

- A. Performance and quality attributes and conditions not expressly stated in this specification document are intended to be excluded and do not form a part of this specification document.
- B. Electrical specifications and performance data contained in this specification document are based on Mini-Circuits' applicable established test performance criteria and measurement instructions.
- C. The parts covered by this specification document are subject to Mini-Circuits standard limited warranty and terms and conditions (collectively, "Standard Terms"); Purchasers of this part are entitled to the rights and benefits contained therein. For a full statement of the Standard Terms and the exclusive rights and remedies thereunder, please visit Mini-Circuits' website at [www.minicircuits.com/MCLStore/terms.jsp](http://www.minicircuits.com/MCLStore/terms.jsp)



# Solid State USB RF SP4T Switch

# USB-SP4T-63

## Typical Performance Data

TEST CONDITIONS: @Temperature = +25degC

FREQUENCY (MHz)	VSWR				
	(:1)				
	COM	J1	J2	J3	J4
1	1.16	1.16	1.16	1.16	1.16
5	1.14	1.14	1.14	1.14	1.14
10	1.14	1.14	1.14	1.14	1.14
40	1.14	1.15	1.15	1.15	1.15
50	1.14	1.15	1.15	1.15	1.15
60	1.14	1.15	1.15	1.15	1.15
70	1.14	1.15	1.15	1.15	1.15
80	1.14	1.15	1.15	1.15	1.15
90	1.15	1.15	1.15	1.15	1.15
100	1.15	1.15	1.15	1.15	1.15
200	1.15	1.16	1.16	1.16	1.16
300	1.16	1.16	1.16	1.16	1.15
400	1.16	1.15	1.15	1.16	1.15
500	1.16	1.16	1.16	1.16	1.15
600	1.16	1.15	1.15	1.16	1.14
700	1.16	1.15	1.15	1.16	1.14
800	1.17	1.15	1.15	1.16	1.13
900	1.16	1.14	1.15	1.16	1.13
1000	1.16	1.14	1.15	1.16	1.12
1100	1.15	1.14	1.15	1.16	1.12
1200	1.15	1.14	1.15	1.16	1.13
1300	1.14	1.14	1.15	1.16	1.13
1400	1.13	1.15	1.16	1.17	1.15
1500	1.13	1.15	1.16	1.17	1.16
1600	1.12	1.16	1.17	1.17	1.17
1700	1.12	1.16	1.17	1.17	1.19
1800	1.11	1.17	1.18	1.17	1.20
1900	1.10	1.17	1.18	1.18	1.21
2000	1.08	1.18	1.19	1.18	1.22
2200	1.07	1.19	1.20	1.18	1.24
2400	1.07	1.19	1.20	1.19	1.24
2600	1.07	1.19	1.19	1.18	1.24
2800	1.06	1.18	1.18	1.18	1.22
3000	1.09	1.17	1.16	1.16	1.17
3200	1.10	1.15	1.13	1.14	1.13
3400	1.13	1.13	1.12	1.13	1.08
3600	1.15	1.12	1.10	1.12	1.03
3800	1.17	1.12	1.12	1.13	1.04
4000	1.20	1.12	1.14	1.14	1.08
4200	1.19	1.12	1.16	1.15	1.12
4400	1.19	1.13	1.19	1.18	1.15
4600	1.18	1.12	1.19	1.19	1.17
4800	1.15	1.13	1.20	1.18	1.18
5000	1.13	1.13	1.18	1.17	1.17
5200	1.11	1.16	1.16	1.14	1.18
5400	1.13	1.18	1.15	1.14	1.23
5600	1.18	1.23	1.15	1.15	1.29
5800	1.24	1.27	1.16	1.17	1.35
6000	1.30	1.32	1.21	1.22	1.42

**Notes**

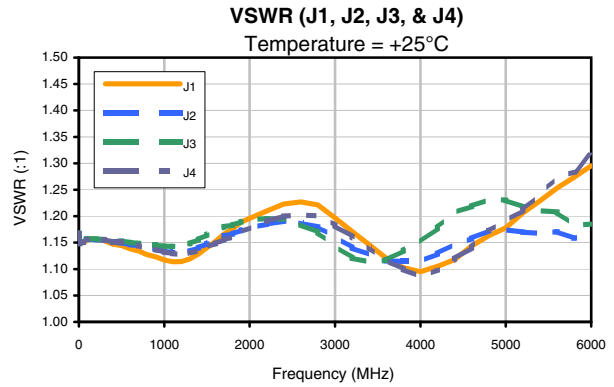
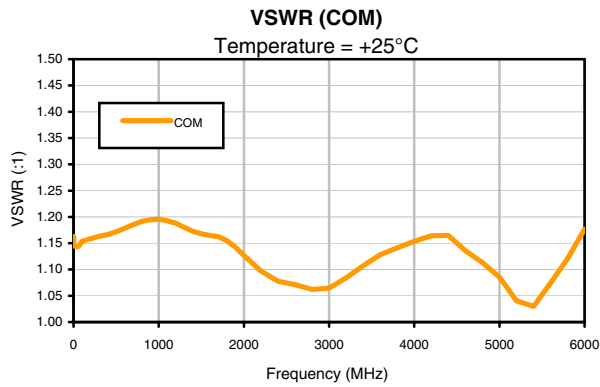
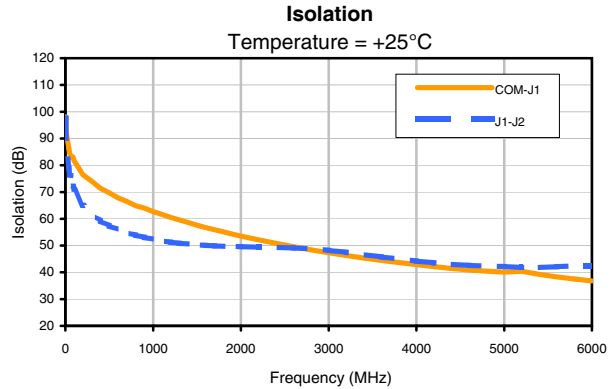
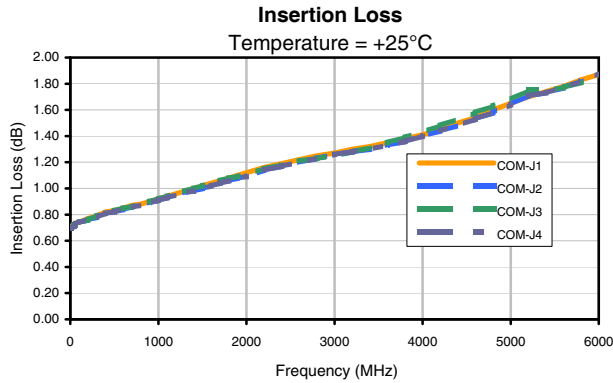
- A. Performance and quality attributes and conditions not expressly stated in this specification document are intended to be excluded and do not form a part of this specification document.
- B. Electrical specifications and performance data contained in this specification document are based on Mini-Circuits' applicable established test performance criteria and measurement instructions.
- C. The parts covered by this specification document are subject to Mini-Circuits standard limited warranty and terms and conditions (collectively, "Standard Terms"); Purchasers of this part are entitled to the rights and benefits contained therein. For a full statement of the Standard Terms and the exclusive rights and remedies thereunder, please visit Mini-Circuits' website at [www.minicircuits.com/MCLStore/terms.jsp](http://www.minicircuits.com/MCLStore/terms.jsp)



# Solid State USB RF SP4T Switch

# USB-SP4T-63

## Typical Performance Curves



**Notes**

- A. Performance and quality attributes and conditions not expressly stated in this specification document are intended to be excluded and do not form a part of this specification document.
- B. Electrical specifications and performance data contained in this specification document are based on Mini-Circuits' applicable established test performance criteria and measurement instructions.
- C. The parts covered by this specification document are subject to Mini-Circuits' standard limited warranty and terms and conditions (collectively, "Standard Terms"); Purchasers of this part are entitled to the rights and benefits contained therein. For a full statement of the Standard Terms and the exclusive rights and remedies thereunder, please visit Mini-Circuits' website at [www.minicircuits.com/MCLStore/terms.jsp](http://www.minicircuits.com/MCLStore/terms.jsp)

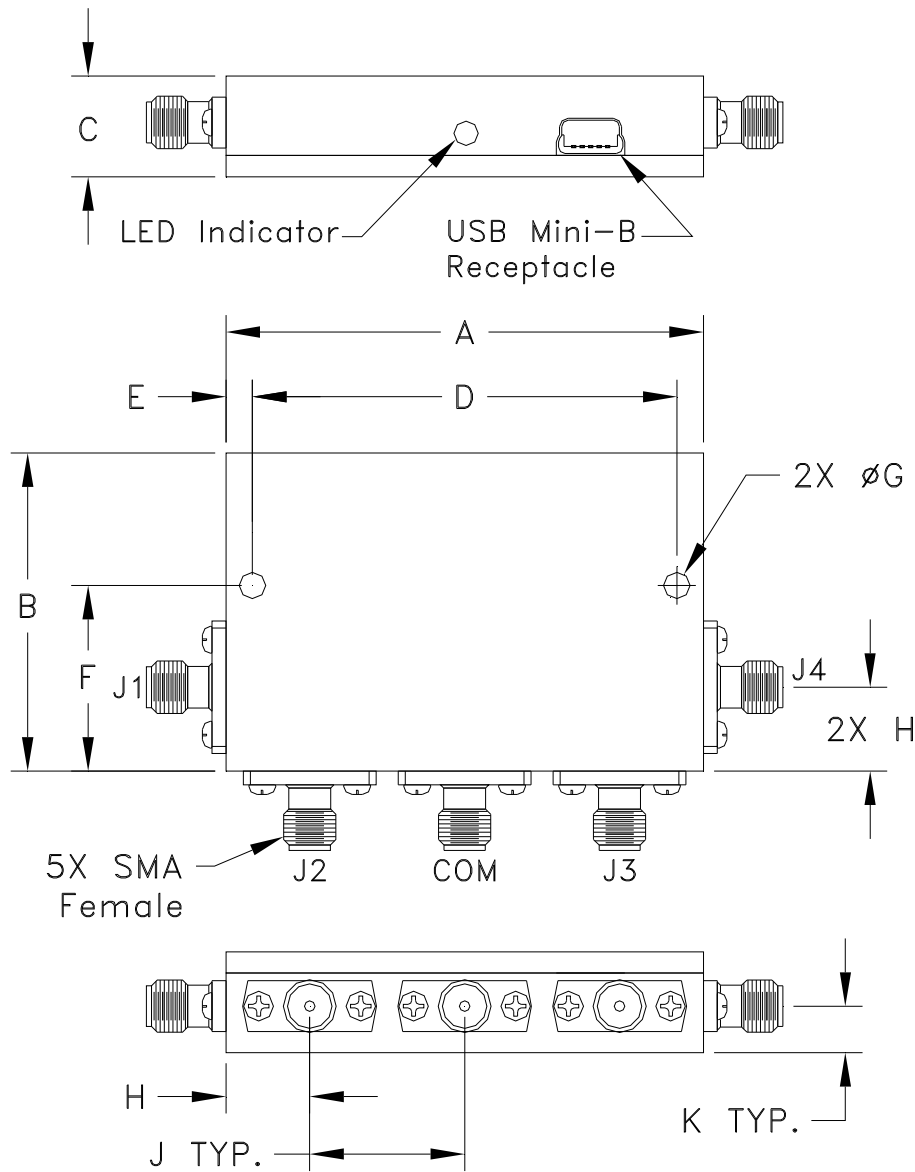


# Case Style

# NR

## Outline Dimensions

NR1982



CASE#	A	B	C	D	E	F	G	H	J	K	WT. GRAMS
NR1982	2.25 (57.2)	1.50 (38.1)	.475 (12.07)	2.000 (50.80)	.125 (3.18)	.875 (22.23)	.125 (3.18)	.395 (10.03)	.730 (18.54)	.219 (5.56)	85

Dimensions are in inches (mm). Tolerances: 2PL. +/- .03; 3PL. +/- .015

### Notes:

1. Case material: Aluminum alloy.
2. Case finish for RoHS Case Styles: Clear chemical conversion coating, non-chrome or trivalent chrome based.

**Mini-Circuits**<sup>®</sup>

INTERNET <http://www.minicircuits.com>

P.O. Box 350166, Brooklyn, New York 11235-0003 (718) 934-4500 Fax (718) 332-4661

Distribution Centers NORTH AMERICA 800-654-7949 • 417-335-5935 • Fax 417-335-5945 • EUROPE 44-1252-832600 • Fax 44-1252-837010

Mini-Circuits ISO 9001 & ISO 14001 Certified



Environmental Specifications **ENV55**

All Mini-Circuits products are manufactured under exacting quality assurance and control standards, and are capable of meeting published specifications after being subjected to any or all of the following physical and environmental test.

Specification	Test/Inspection Condition	Reference/Spec
Operating Temperature	-0° to 50° C Ambient Environment	Individual Model Data Sheet
Storage Temperature	-20° to 60° C Ambient Environment	Individual Model Data Sheet
Operating and Storage Humidity	5% to 85% RH (non-condensing)	Ambient
Bench Handling Test	Bench Top Tip 45° & Drop	MIL-PRF-28800F
Transit Drop Test	Free Fall Drop, 20 cm (7.9 inches)	MIL-PRF-28800F Class 3