

Bandpass Filter

RBP-415+

50Ω 404 to 426 MHz

Maximum Ratings

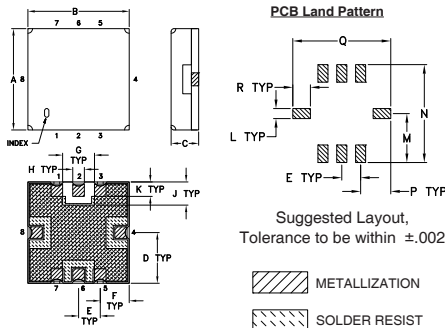
Operating Temperature	-40°C to 85°C
Storage Temperature	-55°C to 100°C
RF Power Input	0.5W at 25°C

Permanent damage may occur if any of these limits are exceeded.

Pin Connections

RF IN	2
RF OUT	6
GROUND	1,3,4,5,7,8

Outline Drawing

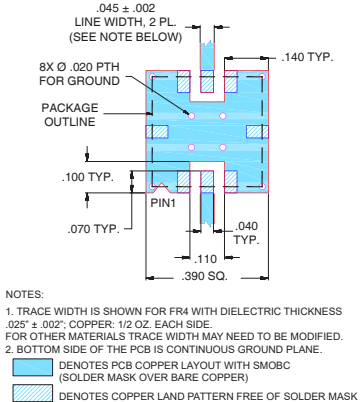


Outline Dimensions (inch/mm)

A	B	C	D	E	F	G	H	J
.350	.350	.100	.175	.075	.100	.110	.040	.080
8.89	8.89	2.54	4.45	1.91	2.54	2.79	1.02	2.03
K	L	M	N	P	Q	R	wt	
.050	.040	.195	.390	.120	.390	.070	grams	
1.27	1.02	4.95	9.91	3.05	9.91	1.78	0.25	

Note: Please refer to case style drawing for details

Demo Board MCL P/N: TB-332 Suggested PCB Layout (PL-176)



Features

- linear phase, up to ±7deg typ. @ Fc ±45MHz
- good VSWR, 1.2:1 typ. @ passband
- small size 0.35" x 0.35"
- shielded case
- aqueous washable

Applications

- harmonic rejection
- transmitters / receivers
- CDMA



Generic photo used for illustration purposes only

CASE STYLE: GP731

+RoHS Compliant

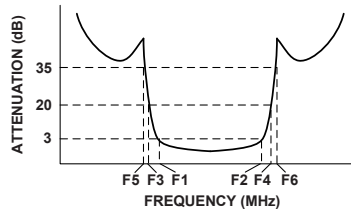
The +Suffix identifies RoHS Compliance. See our web site for RoHS Compliance methodologies and qualifications

Available Tape and Reel at no extra cost	
Reel Size	Devices/Reel
7"	10, 20, 50, 100, 200
13"	500, 1000

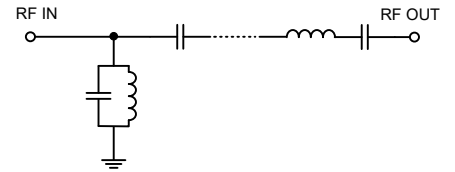
Bandpass Filter Electrical Specifications (T_{AMB} = 25°C)

CENTER FREQ. (MHz)	PASSBAND (MHz) (Loss < 3dB)	STOPBANDS (MHz)				MAXIMUM DEVIATION FROM LINEAR PHASE (deg.)	VSWR (:1)	
		Loss > 20dB	Loss > 35dB	F3	F4		F5	F6
Fc	F1 - F2	F3	F4	F5	F6	Fc ± 45MHz	Max.	Typ.
415	404 - 426	225	550	120	750-2000	±10	1.7	18

Typical Frequency Response

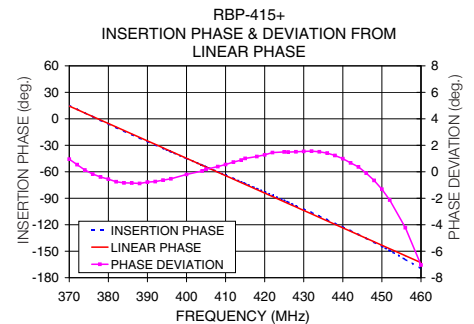
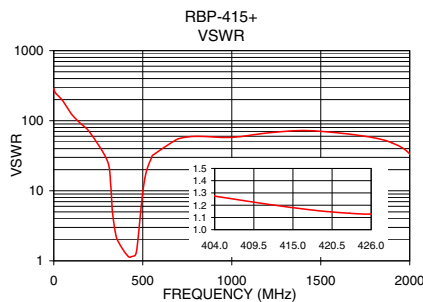
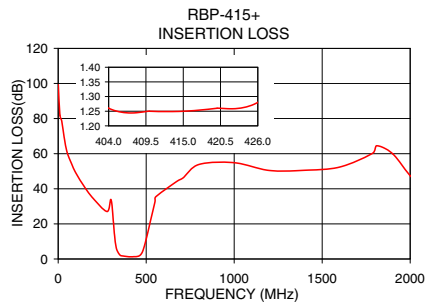


Functional Schematic



Typical Performance Data at 25°C

Frequency (MHz)	Insertion Loss (dB)	VSWR (:1)	Frequency (MHz)	Deviation from Linear Phase (deg)
0.3	99.29	289.53	370.0	0.95
50.0	61.00	193.02	374.0	0.13
120.0	45.73	108.58	380.0	-0.56
225.0	31.41	59.91	386.0	-0.85
318.0	15.95	13.81	390.0	-0.78
328.0	7.41	5.85	396.0	-0.53
340.0	3.23	2.65	404.0	0.06
404.0	1.26	1.27	410.0	0.55
425.0	1.28	1.13	415.0	1.01
426.0	1.28	1.13	422.0	1.45
475.0	3.35	2.24	426.0	1.49
490.0	7.48	5.59	436.0	1.41
510.0	15.50	13.92	440.0	0.99
550.0	32.64	29.96	446.0	-0.11
750.0	49.35	53.46	450.0	-1.32
900.0	66.98	57.91	456.0	-4.22
2000.0	47.47	33.42	460.0	-7.04



Notes

- Performance and quality attributes and conditions not expressly stated in this specification document are intended to be excluded and do not form a part of this specification document.
- Electrical specifications and performance data contained in this specification document are based on Mini-Circuit's applicable established test performance criteria and measurement instructions.
- The parts covered by this specification document are subject to Mini-Circuits standard limited warranty and terms and conditions (collectively, "Standard Terms"); Purchasers of this part are entitled to the rights and benefits contained therein. For a full statement of the Standard Terms and the exclusive rights and remedies thereunder, please visit Mini-Circuits' website at www.minicircuits.com/MCLStore/terms.jsp



Metal Shield Band Pass Filter

RBP-415+

Typical Performance Data

FREQ. (MHz)	INSERTION LOSS (dB)			INPUT RETURN LOSS (dB)			OUTPUT RETURN LOSS (dB)		
	@ -40° C	@ +25° C	@ +85° C	@ -40° C	@ +25° C	@ +85° C	@ -40° C	@ +25° C	@ +85° C
1	91.77	95.57	99.14	0.02	0.02	0.03	0.00	0.00	0.00
10	90.93	90.00	91.91	0.03	0.04	0.04	0.00	0.00	0.00
50	61.71	61.64	61.60	0.09	0.11	0.10	0.00	0.00	0.00
100	49.15	49.09	49.07	0.14	0.17	0.17	0.00	0.01	0.01
110	47.31	47.26	47.21	0.15	0.18	0.18	0.00	0.01	0.01
120	45.58	45.55	45.49	0.16	0.19	0.19	0.00	0.01	0.01
170	38.16	38.13	38.07	0.20	0.24	0.24	0.03	0.05	0.06
180	36.84	36.81	36.76	0.21	0.25	0.26	0.04	0.07	0.08
225	31.22	31.21	31.19	0.27	0.32	0.34	0.09	0.13	0.15
270	27.11	27.18	27.24	0.37	0.44	0.47	0.29	0.36	0.40
318	14.68	14.28	13.73	1.14	1.39	1.58	2.27	2.80	3.23
320	12.73	12.40	11.92	1.34	1.63	1.85	2.72	3.35	3.89
328	6.56	6.56	6.38	3.02	3.44	3.83	6.16	7.53	8.85
330	5.50	5.58	5.47	3.69	4.11	4.51	7.51	9.11	10.67
340	2.85	3.11	3.22	6.76	6.96	7.14	10.76	11.45	11.70
350	2.16	2.40	2.53	7.98	8.17	8.30	9.54	9.85	9.96
360	1.78	1.99	2.11	9.24	9.53	9.77	10.23	10.63	10.87
370	1.49	1.68	1.79	11.00	11.41	11.80	12.07	12.63	13.07
380	1.28	1.47	1.57	13.01	13.56	14.15	14.22	14.97	15.70
390	1.15	1.34	1.45	15.05	15.73	16.56	15.94	16.76	17.70
400	1.08	1.28	1.39	17.23	18.05	19.14	17.11	17.81	18.72
404	1.06	1.26	1.38	18.18	19.05	20.22	17.52	18.11	18.96
410	1.05	1.26	1.38	19.74	20.60	21.81	18.11	18.52	19.23
420	1.06	1.28	1.40	21.54	21.86	22.36	18.82	18.85	19.24
425	1.08	1.30	1.43	21.41	21.36	21.40	18.89	18.77	19.00
426	1.08	1.30	1.44	21.30	21.20	21.17	18.88	18.74	18.94
430	1.10	1.33	1.47	20.63	20.36	20.15	18.81	18.62	18.74
440	1.17	1.41	1.57	19.19	18.87	18.54	18.78	18.69	18.79
450	1.25	1.52	1.70	19.80	19.37	18.91	21.11	21.46	21.92
460	1.42	1.74	1.97	22.04	20.15	18.67	42.52	35.23	30.69
470	1.99	2.43	2.76	13.32	12.46	11.57	14.25	13.66	13.00
475	2.63	3.14	3.55	9.41	8.96	8.39	9.79	9.51	9.11
480	3.63	4.20	4.69	6.54	6.34	6.00	6.72	6.62	6.41
490	6.66	7.31	7.88	3.19	3.24	3.15	3.19	3.30	3.29
500	10.59	11.21	11.79	1.75	1.87	1.87	1.67	1.83	1.90
510	14.78	15.35	15.91	1.12	1.24	1.27	1.01	1.17	1.25
530	23.21	23.70	24.23	0.65	0.75	0.79	0.52	0.65	0.73
540	27.50	27.98	28.51	0.55	0.64	0.68	0.43	0.55	0.62
550	32.06	32.55	33.10	0.48	0.57	0.60	0.36	0.47	0.54
570	43.97	44.59	45.39	0.41	0.48	0.51	0.27	0.37	0.43
580	55.38	55.55	55.90	0.38	0.45	0.48	0.24	0.34	0.40
600	47.24	47.04	46.87	0.35	0.41	0.43	0.20	0.29	0.35
700	44.62	44.82	44.99	0.27	0.32	0.34	0.12	0.21	0.25
750	47.77	47.99	48.22	0.26	0.30	0.32	0.11	0.19	0.24
800	52.14	52.38	52.64	0.25	0.29	0.31	0.11	0.20	0.24
900	73.75	74.54	74.53	0.24	0.28	0.30	0.12	0.20	0.25
1400	50.71	50.95	51.16	0.22	0.26	0.29	0.23	0.33	0.40
1500	51.28	51.72	52.00	0.21	0.25	0.28	0.24	0.35	0.42
2000	46.64	46.09	45.61	0.42	0.51	0.60	0.28	0.43	0.52
2100	36.92	36.36	36.02	1.30	1.54	1.80	0.27	0.42	0.52
2200	29.40	29.60	29.86	5.95	5.91	5.57	0.26	0.42	0.51
2300	35.41	35.76	35.83	0.79	0.85	0.91	0.23	0.39	0.49
2400	39.24	39.49	39.84	0.41	0.47	0.55	0.21	0.37	0.48
2500	41.98	41.96	42.90	0.32	0.39	0.48	0.18	0.35	0.46

REV. X2
RBP-415+
101012
Page 1 of 2



IF/RF MICROWAVE COMPONENTS • ISO 9001 ISO 14001 AS 9100 CERTIFIED • RoHS compliant

P.O. Box 350166, Brooklyn, New York 11235-0003 (718) 934-4500 Fax (718) 332-4661



The Design Engineers Search Engine finds the model you need, Instantly • For detailed performance specs & shopping online see



Metal Shield Band Pass Filter

RBP-415+

Typical Performance Data

FREQ. (MHz)	GROUP DELAY (nsec)		
	@ -40° C	@ +25° C	@ +85° C
400	4.95	4.92	4.96
404	4.94	4.87	4.95
410	4.91	4.93	4.95
420	5.02	5.00	5.01
425	5.13	5.13	5.16
426	5.14	5.15	5.15
430	5.26	5.26	5.27
440	5.67	5.67	5.73
450	6.33	6.35	6.43
460	7.28	7.32	7.35
470	8.14	8.06	8.00
475	8.19	8.05	7.90
480	7.89	7.69	7.51
490	6.52	6.26	6.11
500	4.90	4.72	4.60
510	3.57	3.49	3.34
520	2.56	2.56	2.35
530	1.82	1.94	1.68
540	1.31	1.15	1.07
550	0.51	0.01	0.11
561	3.14	3.27	4.86
570	41.04	33.77	35.62
580	4.94	7.02	5.03
590	1.04	1.36	0.59
600	0.19	0.30	0.83
610	0.39	0.05	0.03
620	0.83	0.53	0.33
630	0.77	0.37	0.36
640	0.81	0.13	0.46
650	0.31	0.02	0.35
660	0.35	0.43	0.14
670	0.71	1.08	0.47
680	0.06	0.64	0.18
690	0.33	0.41	0.64
700	0.12	0.64	0.08
710	0.63	0.34	0.75
720	0.51	0.31	0.91
730	0.52	0.03	1.12
740	0.89	0.06	1.05
750	0.26	0.91	0.74
760	0.62	0.70	0.72
770	1.91	0.53	0.16
780	0.56	1.98	0.49
790	1.34	0.03	0.09
791	0.75	0.59	1.60
792	0.11	1.65	1.33
793	0.61	0.34	0.97
794	0.50	0.50	0.79
795	0.13	0.39	0.24
796	1.15	0.95	0.53
797	0.88	0.81	0.35
798	0.18	0.00	0.56
799	0.50	2.76	1.40
800	0.68	0.11	0.27

REV. X2
RBP-415+
101012
Page 2 of 2



IF/RF MICROWAVE COMPONENTS • ISO 9001 ISO 14001 AS 9100 CERTIFIED RoHS compliant
P.O. Box 350166, Brooklyn, New York 11235-0003 (718) 934-4500 Fax (718) 332-4661

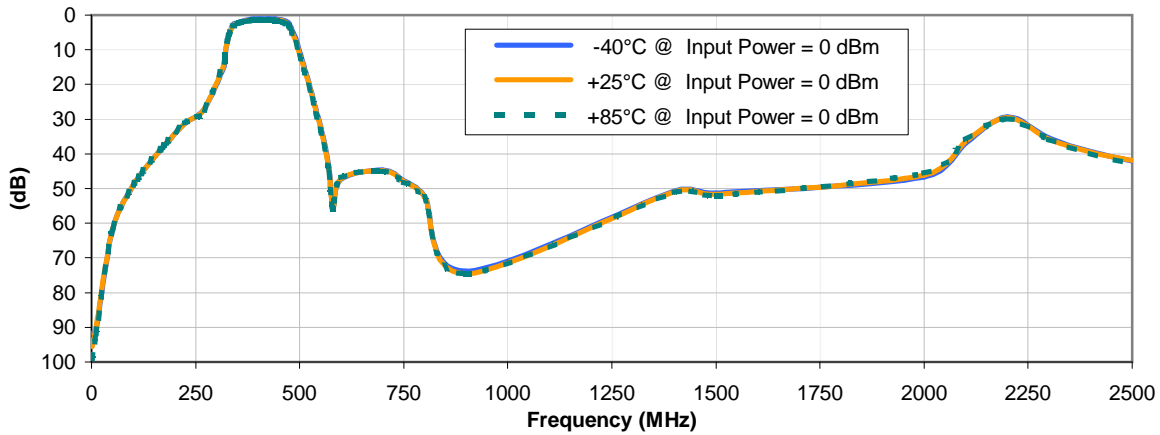


The Design Engineers Search Engine finds the model you need, Instantly • For detailed performance specs & shopping online see

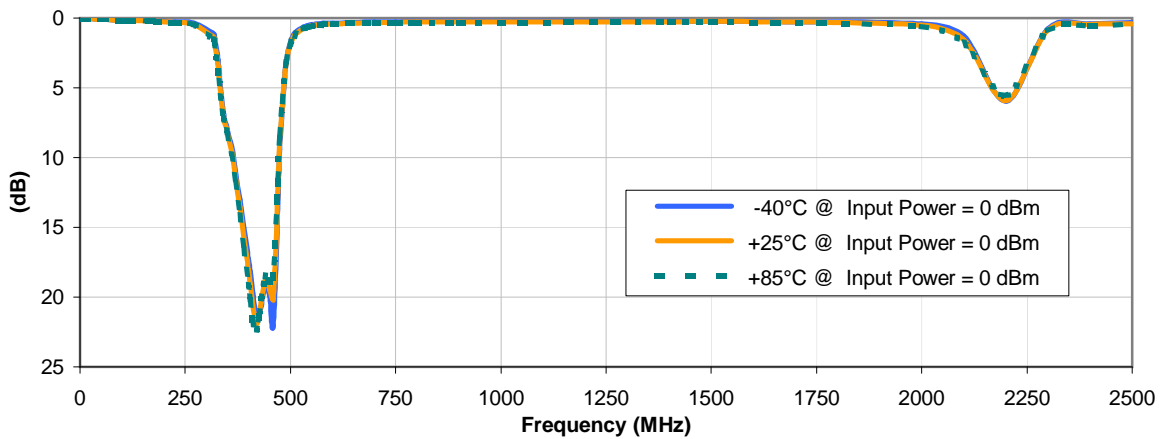


Typical Performance Curves

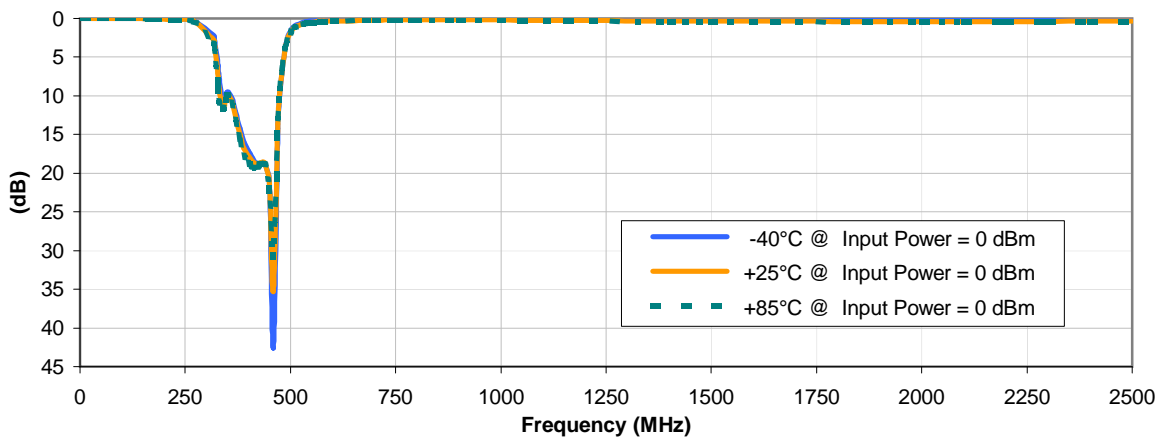
INSERTION LOSS vs. TEMPERATURE



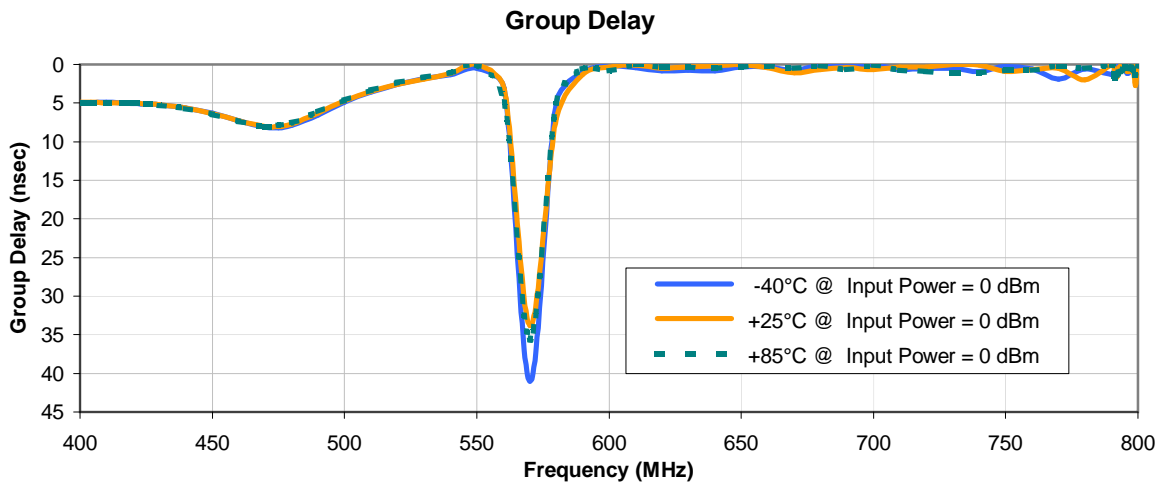
INPUT RETURN LOSS vs. TEMPERATURE



OUTPUT RETURN LOSS vs. TEMPERATURE

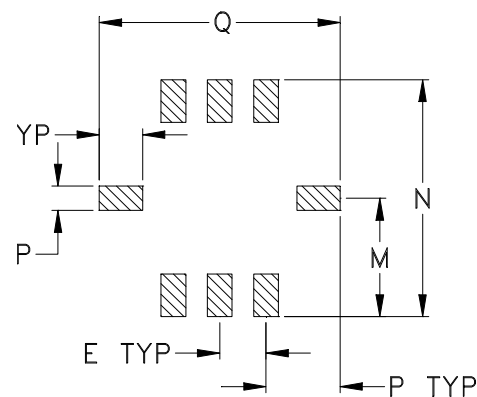
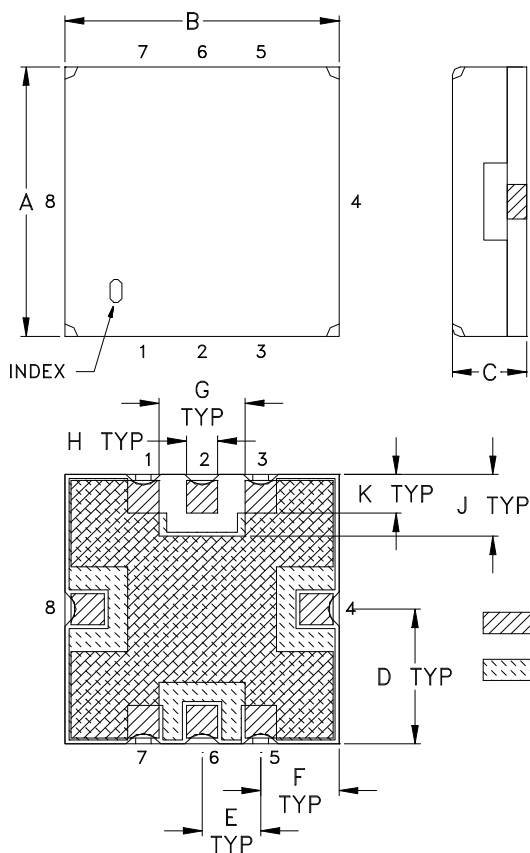


Typical Performance Curves



Outline Dimensions

GP731



CASE #	A	B	C	D	E	F	G	H	J	K	L	M
GP731	.350 (8.89)	.350 (8.89)	.100 (2.54)	.175 (4.45)	.075 (1.91)	.100 (2.54)	.110 (2.79)	.040 (1.02)	.080 (2.03)	.050 (1.27)	.040 (1.02)	.195 (4.95)

CASE #	N	P	Q	R	WT. GRAM
GP731	.390 (9.91)	.120 (3.05)	.390 (9.91)	.070 (1.78)	.4 +0.3 -0.0

Dimensions are in inches (mm). Tolerances: 2 Pl. $\pm .03$; 3Pl. $\pm .015$

Notes:

1. Case material: Nickel-Silver alloy.
2. Base: Printed wiring laminate.
3. Termination finish:

For RoHS Case Styles: 3-5 μ inch (.08-.13 microns) Gold over 120-240 μ inch (3.05-6.10 microns) Nickel plate.
 For RoHS-5 Case Styles: Tin-Lead plate.

Mini-Circuits®
 ISO 9001 ISO 14001 CERTIFIED

ALL NEW
minicircuits.com

P.O. Box 350166, Brooklyn, New York 11235-0003 (718) 934-4500 Fax (718) 332-4661 For detailed performance specs & shopping online see Mini-Circuits web site



The Design Engineers Search Engine Provides ACTUAL Data Instantly From MINI-CIRCUITS At: www.minicircuits.com

RF/IF MICROWAVE COMPONENTS

Tape & Reel Packaging TR-F78



Tape Width, mm	Device Cavity Pitch, mm	Reel Size, inches	Devices per Reel see note
16	12	7	10
			20
			50
			100
			200
		13	500, 1000

Note: Please consult individual model data sheet to determine device per reel availability.

Mini-Circuits carrier tape materials provide protection from ESD (Electro-Static Discharge) during handling and transportation. Tapes are static dissipative and comply with industry standards EIA-481/EIA-541.

Go to: www.minicircuits.com/pages/pdfs/tape.pdf



INTERNET <http://www.minicircuits.com>

P.O. Box 350166, Brooklyn, New York 11235-0003 (718) 934-4500 Fax (718) 332-4661

Distribution Centers NORTH AMERICA 800-654-7949 • 417-335-5935 • Fax 417-335-5945 • EUROPE 44-1252-832600 • Fax 44-1252-837010

Mini-Circuits ISO 9001 & ISO 14001 Certified

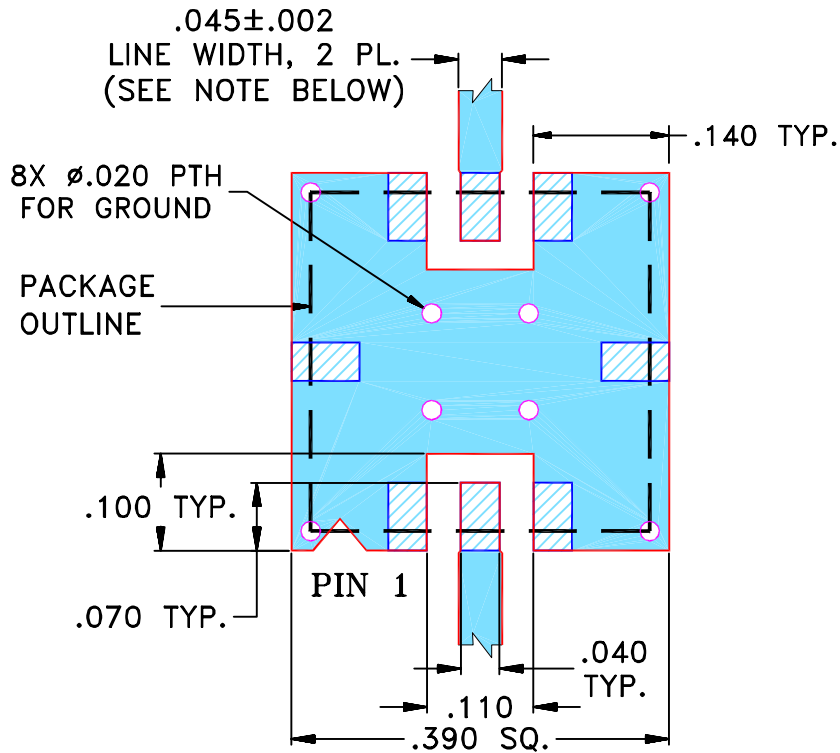
THIRD ANGLE PROJECTION



REVISIONS

REV	ECN No.	DESCRIPTION	DATE	DR	AUTH
OR	R59289	NEW RELEASE (FROM RAVON)	02/05	DK	HH
A	M101151	ADDED "RBP" & CORRECTED PIN CONNECTION TO DESCRIPTION OF PL-DWG.	10/10/05	MMG	DJ
B	M102713	UPDATED NOTES, ADDED "...WITH SMOBC"	01/20/06	GT	IL

SUGGESTED MOUNTING CONFIGURATION FOR GP731 CASE STYLE, "qf" PIN CONNECTION.



- NOTES:**
- TRACE WIDTH IS SHOWN FOR FR4 WITH DIELECTRIC THICKNESS .025" ± .002"; COPPER: 1/2 OZ. EACH SIDE. FOR OTHER MATERIALS TRACE WIDTH MAY NEED TO BE MODIFIED.
 - BOTTOM SIDE OF THE PCB IS CONTINUOUS GROUND PLANE.



DENOTES PCB COPPER LAYOUT WITH SMOBC (SOLDER MASK OVER BARE COPPER)



DENOTES COPPER LAND PATTERN FREE OF SOLDER MASK

UNLESS OTHERWISE SPECIFIED	INITIALS	DATE
DIMENSIONS ARE IN INCHES TOLERANCES ON: 2 PL DECIMALS ± 3 PL DECIMALS ± .005 ANGLES ± FRACTIONS ±	DRAWN	DK (RAVON) 10 FEB 05
	CHECKED	RZ (RAVON) 10 FEB 05
	APPROVED	HH (RAVON) 10 FEB 05



Mini-Circuits®

13 Neptune Avenue
Brooklyn NY 11235

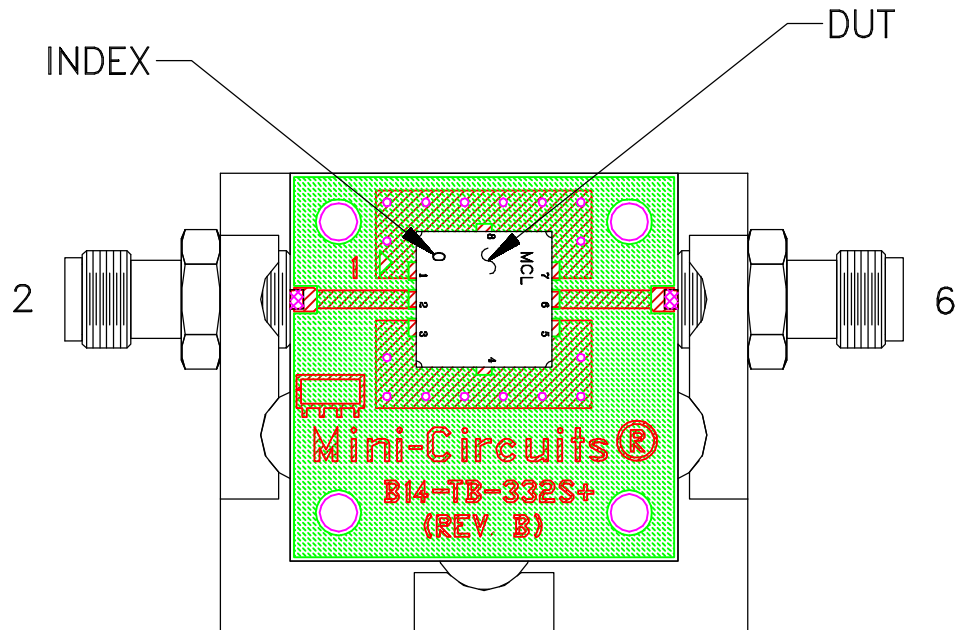
PL, qf, GP731, RBP, TB-332

Mini-Circuits®
 THIS DOCUMENT AND ITS CONTENTS ARE THE PROPERTY OF MINI-CIRCUITS. EXCEPT FOR USE EXPRESSLY GRANTED, IN WRITING, TO ITS VENDORS, VENDEE AND THE UNITED STATES GOVERNMENT, MINI-CIRCUITS RESERVES ALL PROPRIETARY DESIGN, USE, MANUFACTURING AND REPRODUCTION RIGHTS THERETO. THESE CONTENTS SHALL NOT BE USED, DUPLICATED OR DISCLOSED TO ANY OUTSIDE PARTY, IN WHOLE OR IN PART, WITHOUT WRITTEN PERMISSION OF MINI-CIRCUITS.

ASHEETA1.DWG REV:A DATE:01/12/95

SIZE	CODE IDENT	DRAWING NO:	REV:
A	15542	98-PL-176	B
FILE:	98PL176	SCALE: 5:1	SHEET: 1 OF 1

Evaluation Board and Circuit



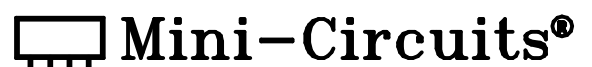
TB-332



Schematic Diagram

Notes:

1. 50 Ohm SMA Female connectors.
2. PCB Material: R04350 or equivalent,
Dielectric Constant=3.5, Thickness=.020 inch.



All Mini-Circuits products are manufactured under exacting quality assurance and control standards, and are capable of meeting published specifications after being subjected to any or all of the following physical and environmental test.

Specification	Test/Inspection Condition	Reference/Spec
Operating Temperature	-40° to 85° C Ambient Environment	Individual Model Data Sheet
Storage Temperature	-55° to 100° C Ambient Environment	Individual Model Data Sheet
HAST	130°C, 85% RH, 96 hours	JESD22-A110
Humidity	90 to 95% RH, 240 hours, 50°C	MIL-STD-202, Method 103, Condition A, Except 50°C and end-point electrical test done within 12 hours
Thermal Shock	-55° to 100°C, 100 cycles	MIL-STD-202, Method 107, Condition A-3, except +100°C
Solder Reflow Heat	Sn-Pb Eutectic Process: 225°C peak Pb-Free Process, 245°C peak	J-STD-020, Table 4-1, 4-2 and 5-2, Figure 5-1
Solderability	10X Magnification	J-STD-002, Para 4.2.5, Test S, 95% Coverage
Vibration (High Frequency)	20g peak, 20-2000 Hz, 4 times in each of three axes (total 12)	MIL-STD-883, Method 2007.3, Condition A
Mechanical Shock	50g, 11 ms, 1/2-sine, 18 shocks: 3 each direction, each of 3 axes	MIL-STD-202, Method 213, Condition A
Marking Resistance to Solvents	Isopropyl alcohol + mineral spirits at 25°C; terpene defluxer at 25°C; distilled water + proylene glycol monomethyl ether + monoethanolamine at 63°C to 70°C	MIL-STD-202, Method 215