

Surface Mount

Monolithic Amplifier

DC-1 GHz

Product Features

- Exact footprint compatible for RAM-8+
Benefits: • lower device voltage, 3.7V typ.
 - lower power dissipation in the MMIC
 - may eliminate need for RFC
- Wideband, DC to 1 GHz
- Cascadable ceramic package
- Internally Matched to 50 Ohms
- Low noise figure, 2.6 dB typ.
- Excellent repeatability

Typical Applications

- Cellular
- UHF/VHF
- Communication system
- Transmission receivers

General Description

RAM-8A+ (RoHS compliant) is a wideband amplifier offering high dynamic range. It has repeatable performance from lot to lot. It is enclosed in a ceramic surface-mount package. RAM-8A+ uses Darlington configuration and is fabricated using InGaP HBT technology.



Generic photo used for illustration purposes only

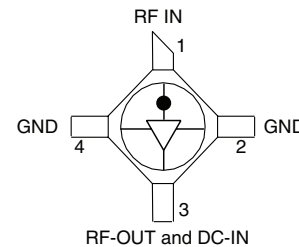
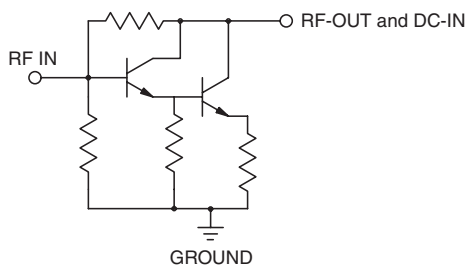
RAM-8A+

CASE STYLE: AF190

+RoHS Compliant

The +Suffix identifies RoHS Compliance. See our web site for RoHS Compliance methodologies and qualifications

simplified schematic and pin description



Function	Pin Number	Description
RF IN	1	RF input pin. This pin requires the use of an external DC blocking capacitor chosen for the frequency of operation.
RF-OUT and DC-IN	3	RF output and bias pin. DC voltage is present on this pin; therefore a DC blocking capacitor is necessary for proper operation. An RF choke is needed to feed DC bias without loss of RF signal due to the bias connection, as shown in "Recommended Application Circuit".
GND	2,4	Connections to ground. Use via holes as shown in "Suggested Layout for PCB Design" to reduce ground path inductance for best performance.

Notes

- A. Performance and quality attributes and conditions not expressly stated in this specification document are intended to be excluded and do not form a part of this specification document.
B. Electrical specifications and performance data contained in this specification document are based on Mini-Circuit's applicable established test performance criteria and measurement instructions.
C. The parts covered by this specification document are subject to Mini-Circuits standard limited warranty and terms and conditions (collectively, "Standard Terms"); Purchasers of this part are entitled to the rights and benefits contained therein. For a full statement of the Standard Terms and the exclusive rights and remedies thereunder, please visit Mini-Circuits' website at www.minicircuits.com/MCLStore/terms.jsp

REV. B
ECO-003934
RAM-8A+
200902
Page 1 of 4



Electrical Specifications at 25°C and 36mA, unless noted

Parameter		Min.	Typ.	Max.	Units
Frequency Range*		DC		1	GHz
Gain	f=0.1 GHz	—	31.5		dB
	f=1 GHz	22 ²	24.4		
Input Return Loss	f=0.1 to 1 GHz		13		dB
Output Return Loss	f=0.1 to 1 GHz		11		dB
Output Power @ 1 dB compression	f=1 GHz		12.6		dBm
Output IP3	f=1 GHz		+24.4		dBm
Noise Figure	f=1 GHz		2.6		dB
Recommended Device Operating Current			36		mA
Device Operating Voltage			3.7		V
Thermal Resistance, junction-to-case ¹			145		°C/W

*Guaranteed specification DC-1 GHz. Low frequency cut off determined by external coupling capacitors.

Absolute Maximum Ratings

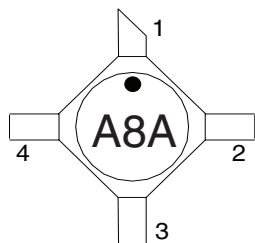
Parameter	Ratings
Operating Temperature	-54°C to 100°C
Storage Temperature	-65°C to 150°C
Operating Current	65mA
Power Dissipation	310mW
Input Power	13dBm

Note: Permanent damage may occur if any of these limits are exceeded.
These ratings are not intended for continuous normal operation.

¹Case is defined as ground leads.

²Full temperature range.

Product Marking



Markings in addition to model number designation may appear for internal quality control purposes.

Additional Detailed Technical Information

Additional information is available on our web site. To access this information enter the model number on our web site home page.

Performance data, graphs, s-parameter data set (.zip file)

Case Style: AF190

Ceramic surface-mount, .083 body diameter

Tape & Reel: F14

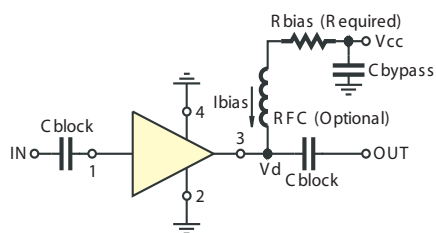
7" inch reels with 20, 50, 100, 200, 500, 1000 devices.

Suggested Layout for PCB Design: PL-254

Evaluation Board: TB-414-8A+

Environmental Ratings: ENV08T6

Recommended Application Circuit



Test Board includes case, connectors, and components (in bold) soldered to PCB

R BIAS ¹	
Vcc	Bias Resistor Value ²
7	88.7
8	118
9	143
10	174
11	200
12	226
13	255
14	280
15	309

¹ When being used as a substitute for MAR-8SM or MSA-0866, the bias resistor values must be changed to the values in this table.

² 1% Resistor values (ohms) for optimum bias.

ESD Rating

Human Body Model (HBM): Class 2 (2000 to <4000V) in accordance with ANSI/ESD STM 5.1 - 2001

Machine Model (MM): Class M1 (<500V) in accordance with ANSI/ESD STM 5.2-1999

Typical Performance Data

NOTE: Use PDF Bookmarks to view DATA at required conditions

Definitions:

Input Return Loss = -S11 (dB)

Gain(Power Gain) = S21 (dB)

Reverse Isolation = -S12 (dB)

Output Return Loss = -S22 (dB)

TEST CONDITIONS: Vd = 3.68V, Id = 36.00mA @ Temperature = +25°C

FREQ	Gain	Isolation	Input Return Loss	Output Return Loss	Stability		IP-3 Output	1dB Comp. Output	Noise Figure
					K	Measure			
(MHz)	(dB)	(dB)	(dB)	(dB)	K	Measure	(dBm)	(dBm)	(dB)
20.0	32.05	34.94	14.07	11.78	1.03	0.38	30.55	13.25	2.99
30.0	32.02	34.97	14.09	11.74	1.04	0.39	28.58	13.19	2.66
40.0	31.99	34.96	14.07	11.71	1.04	0.39	29.27	13.17	2.36
50.0	31.90	35.14	14.05	11.67	1.05	0.42	28.72	13.36	2.37
60.0	31.92	35.03	14.06	11.70	1.04	0.41	29.01	13.11	2.24
70.0	31.87	34.91	14.10	11.73	1.04	0.40	27.72	13.12	2.52
80.0	31.83	34.92	14.13	11.75	1.04	0.41	26.94	13.06	2.38
90.0	31.79	34.88	14.15	11.76	1.04	0.41	27.94	13.03	2.29
100.0	31.74	34.87	14.15	11.77	1.04	0.42	27.77	13.00	2.30
200.0	31.15	34.70	14.59	11.93	1.05	0.48	26.87	12.84	2.67
300.0	30.36	34.39	15.06	12.02	1.06	0.54	26.67	12.71	2.63
400.0	29.52	33.94	15.41	12.10	1.07	0.59	27.37	12.65	2.74
500.0	28.65	33.37	15.62	12.15	1.08	0.63	26.11	12.72	2.66
600.0	27.81	32.69	15.70	12.16	1.08	0.65	26.23	12.69	2.77
700.0	26.98	32.01	15.70	12.21	1.08	0.67	26.24	12.62	2.88
800.0	26.20	31.28	15.60	12.25	1.08	0.68	25.94	12.57	3.04
900.0	25.46	30.57	15.44	12.25	1.07	0.69	25.53	12.65	2.95
1000.0	24.76	29.90	15.30	12.21	1.07	0.70	24.30	12.72	3.02
1100.0	24.09	29.27	15.17	12.20	1.07	0.71	24.27	12.60	3.02
1200.0	23.45	28.65	14.96	12.21	1.06	0.71	24.26	12.46	3.10
1300.0	22.85	28.09	14.77	12.20	1.06	0.72	23.56	12.13	3.20
1400.0	22.26	27.54	14.56	12.20	1.06	0.73	23.33	11.85	3.18
1500.0	21.72	27.01	14.31	12.20	1.06	0.73	22.60	11.63	3.19
1600.0	21.20	26.52	14.06	12.22	1.06	0.74	22.42	11.39	3.16
1700.0	20.69	26.07	13.78	12.28	1.06	0.74	21.80	10.94	3.15
1800.0	20.22	25.62	13.52	12.34	1.06	0.75	21.73	10.71	3.16
1900.0	19.76	25.21	13.26	12.43	1.06	0.76	21.71	10.38	3.17
2000.0	19.30	24.83	13.02	12.50	1.06	0.76	21.16	9.97	3.26
2100.0	18.88	24.45	12.78	12.54	1.06	0.77	20.97	9.83	3.21
2200.0	18.47	24.06	12.55	12.59	1.06	0.78	20.22	9.30	3.22
2300.0	18.07	23.74	12.28	12.70	1.06	0.79	20.24	9.09	3.24
2500.0	17.32	23.09	11.89	12.81	1.07	0.80	19.48	8.48	3.31
3000.0	15.62	21.70	11.10	13.39	1.08	0.83	18.13	7.19	3.41
3500.0	14.12	20.57	10.79	13.77	1.11	0.86	17.03	5.94	3.58
4000.0	12.86	19.50	10.72	14.51	1.14	0.87	15.91	5.07	3.74
4500.0	11.71	18.60	10.71	15.40	1.17	0.88	15.12	4.19	3.86
5000.0	10.76	17.76	10.90	16.36	1.20	0.89	13.92	3.34	4.00
5500.0	9.91	16.92	10.92	17.61	1.21	0.89	13.24	2.62	4.18
6000.0	9.22	16.27	11.55	17.51	1.23	0.87	11.90	1.81	4.36

Typical Performance Data

Definitions:

Input Return Loss = -S11 (dB)

Gain(Power Gain) = S21 (dB)

Reverse Isolation = -S12 (dB)

Output Return Loss = -S22 (dB)

TEST CONDITIONS: Vd = 3.63V, Id = 29.00mA @ Temperature = +25°C

FREQ	Gain	Isolation	Input Return Loss	Output Return Loss	Stability		IP-3 Output	1dB Comp. Output	Noise Figure
					K	Measure			
(MHz)	(dB)	(dB)	(dB)	(dB)	K	Measure	(dBm)	(dBm)	(dB)
20.0	31.06	34.53	11.72	9.53	1.04	0.38	29.19	11.64	3.00
30.0	31.03	34.51	11.66	9.51	1.04	0.38	27.11	11.70	2.67
40.0	31.00	34.38	11.63	9.49	1.04	0.37	30.33	11.40	2.35
50.0	30.92	34.62	11.59	9.48	1.04	0.41	27.61	11.42	2.27
60.0	30.95	34.26	11.61	9.49	1.03	0.36	27.44	11.26	2.25
70.0	30.90	34.40	11.64	9.52	1.04	0.39	25.65	11.40	2.49
80.0	30.87	34.38	11.67	9.54	1.04	0.39	25.34	11.29	2.36
90.0	30.82	34.34	11.76	9.55	1.04	0.39	26.04	11.20	2.29
100.0	30.79	34.34	11.82	9.57	1.04	0.40	25.86	11.29	2.30
200.0	30.27	34.19	12.29	9.77	1.04	0.46	24.87	10.87	2.66
300.0	29.58	33.83	12.84	9.98	1.04	0.52	24.99	10.66	2.63
400.0	28.83	33.40	13.32	10.20	1.05	0.57	25.04	10.61	2.75
500.0	28.05	32.84	13.69	10.41	1.05	0.61	24.44	10.66	2.69
600.0	27.28	32.21	13.91	10.59	1.05	0.64	24.68	10.75	2.75
700.0	26.52	31.56	14.05	10.78	1.05	0.66	24.40	10.55	2.91
800.0	25.80	30.86	14.07	10.96	1.04	0.67	24.68	10.64	3.03
900.0	25.10	30.19	14.03	11.09	1.04	0.69	24.40	11.01	2.93
1000.0	24.44	29.55	13.98	11.20	1.04	0.70	23.08	11.04	3.02
1100.0	23.80	28.94	13.91	11.28	1.03	0.71	23.44	11.23	3.00
1200.0	23.18	28.36	13.78	11.38	1.03	0.72	23.48	11.08	3.09
1300.0	22.61	27.81	13.67	11.45	1.03	0.72	22.77	10.95	3.17
1400.0	22.03	27.28	13.52	11.52	1.03	0.73	22.70	10.65	3.16
1500.0	21.50	26.77	13.33	11.58	1.03	0.74	22.04	10.64	3.14
1600.0	20.99	26.29	13.13	11.65	1.03	0.74	21.77	10.45	3.16
1700.0	20.48	25.87	12.90	11.76	1.03	0.75	21.32	10.19	3.11
1800.0	20.03	25.42	12.69	11.86	1.03	0.76	21.28	9.94	3.16
1900.0	19.57	25.04	12.46	12.00	1.04	0.77	21.10	9.59	3.15
2000.0	19.12	24.68	12.25	12.10	1.04	0.78	20.60	9.24	3.21
2100.0	18.70	24.32	12.07	12.18	1.04	0.79	20.43	9.10	3.16
2200.0	18.29	23.93	11.87	12.26	1.04	0.79	19.73	8.73	3.19
2300.0	17.90	23.62	11.64	12.40	1.05	0.80	19.68	8.46	3.23
2500.0	17.15	23.00	11.31	12.57	1.05	0.82	19.04	7.89	3.29
3000.0	15.45	21.66	10.62	13.28	1.08	0.85	17.69	6.62	3.34
3500.0	13.95	20.60	10.40	13.76	1.12	0.88	16.59	5.40	3.52
4000.0	12.68	19.57	10.37	14.58	1.15	0.89	15.53	4.61	3.66
4500.0	11.53	18.70	10.38	15.58	1.19	0.91	14.70	3.71	3.76
5000.0	10.58	17.89	10.61	16.61	1.22	0.91	13.55	2.84	3.91
5500.0	9.72	17.07	10.69	18.03	1.24	0.91	12.87	2.16	4.10
6000.0	9.03	16.43	11.33	18.00	1.26	0.89	11.55	1.32	4.28

Typical Performance Data

Definitions:

Input Return Loss = -S11 (dB)

Gain(Power Gain) = S21 (dB)

Reverse Isolation = -S12 (dB)

Output Return Loss = -S22 (dB)

TEST CONDITIONS: Vd = 3.71V, Id = 43.00mA @ Temperature = +25°C

FREQ	Gain	Isolation	Input Return Loss	Output Return Loss	Stability		IP-3 Output	1dB Comp. Output	Noise Figure
					K	Measure			
(MHz)	(dB)	(dB)	(dB)	(dB)	K	Measure	(dBm)	(dBm)	(dB)
20.0	32.71	35.34	16.30	13.79	1.03	0.39	30.59	13.81	3.04
30.0	32.69	35.36	16.25	13.79	1.03	0.39	29.63	13.61	2.72
40.0	32.66	35.38	16.24	13.78	1.04	0.40	30.05	13.97	2.39
50.0	32.56	35.62	16.24	13.78	1.05	0.44	31.22	14.40	2.31
60.0	32.59	35.24	16.22	13.81	1.03	0.39	30.47	13.95	2.27
70.0	32.53	35.33	16.23	13.85	1.04	0.41	28.92	13.77	2.59
80.0	32.49	35.30	16.23	13.87	1.04	0.41	28.65	13.82	2.39
90.0	32.44	35.27	16.34	13.87	1.04	0.42	29.77	13.80	2.36
100.0	32.39	35.30	16.40	13.88	1.04	0.43	29.51	13.56	2.34
200.0	31.73	35.13	16.73	13.91	1.05	0.49	28.61	13.64	2.72
300.0	30.88	34.80	17.02	13.80	1.07	0.55	28.65	13.61	2.65
400.0	29.97	34.33	17.16	13.65	1.08	0.60	28.80	13.41	2.73
500.0	29.04	33.72	17.19	13.49	1.09	0.63	27.33	13.50	2.73
600.0	28.14	33.02	17.09	13.30	1.10	0.66	27.47	13.26	2.82
700.0	27.27	32.32	16.95	13.19	1.10	0.67	27.50	13.49	2.94
800.0	26.46	31.54	16.73	13.10	1.09	0.68	26.93	13.30	3.04
900.0	25.69	30.81	16.47	12.98	1.09	0.69	25.97	13.10	2.97
1000.0	24.96	30.12	16.27	12.84	1.08	0.70	24.99	13.24	3.07
1100.0	24.28	29.47	16.09	12.76	1.08	0.70	24.81	12.98	3.05
1200.0	23.62	28.84	15.81	12.71	1.08	0.71	24.59	12.94	3.15
1300.0	23.01	28.26	15.57	12.64	1.08	0.71	23.95	12.63	3.20
1400.0	22.41	27.69	15.30	12.60	1.07	0.72	23.74	12.44	3.23
1500.0	21.86	27.17	15.00	12.55	1.07	0.72	23.14	12.14	3.22
1600.0	21.34	26.66	14.72	12.54	1.07	0.73	22.87	11.90	3.20
1700.0	20.82	26.19	14.40	12.57	1.07	0.74	22.25	11.36	3.19
1800.0	20.35	25.73	14.10	12.60	1.07	0.74	22.12	11.22	3.22
1900.0	19.88	25.32	13.80	12.67	1.07	0.75	22.15	10.88	3.22
2000.0	19.43	24.93	13.52	12.71	1.07	0.76	21.51	10.44	3.29
2100.0	19.00	24.55	13.27	12.73	1.07	0.76	21.42	10.28	3.25
2200.0	18.59	24.14	13.02	12.76	1.07	0.77	20.59	9.68	3.26
2300.0	18.19	23.82	12.73	12.84	1.07	0.77	20.63	9.51	3.30
2500.0	17.43	23.14	12.29	12.92	1.07	0.79	19.91	8.91	3.37
3000.0	15.74	21.71	11.44	13.41	1.09	0.82	18.50	7.56	3.45
3500.0	14.24	20.55	11.08	13.71	1.11	0.84	17.41	6.30	3.63
4000.0	12.99	19.45	10.98	14.39	1.13	0.85	16.29	5.46	3.77
4500.0	11.84	18.52	10.92	15.21	1.16	0.87	15.47	4.58	3.93
5000.0	10.89	17.67	11.11	16.11	1.18	0.87	14.27	3.72	4.11
5500.0	10.03	16.82	11.10	17.23	1.19	0.87	13.59	3.05	4.29
6000.0	9.35	16.15	11.73	17.10	1.21	0.86	12.22	2.18	4.46

Typical Performance Data

Definitions:

Input Return Loss = -S11 (dB)

Gain(Power Gain) = S21 (dB)

Reverse Isolation = -S12 (dB)

Output Return Loss = -S22 (dB)

TEST CONDITIONS: Vd = 3.70V, Id = 36.00mA @ Temperature = -55°C

FREQ	Gain	Isolation	Input Return Loss	Output Return Loss	Stability		IP-3 Output	1dB Comp. Output	Noise Figure
					K	Measure			
(MHz)	(dB)	(dB)	(dB)	(dB)	K	Measure	(dBm)	(dBm)	(dB)
20.0	33.17	35.68	18.36	15.90	1.03	0.40	29.30	13.51	2.82
30.0	33.12	35.72	17.89	15.62	1.04	0.41	26.65	13.41	1.92
40.0	33.10	35.64	18.26	15.33	1.03	0.40	29.32	13.30	1.83
50.0	32.98	36.02	18.97	15.36	1.05	0.46	31.08	13.11	1.56
60.0	32.99	35.62	18.19	15.83	1.04	0.42	30.43	13.31	1.76
70.0	32.97	35.56	18.31	15.51	1.04	0.41	27.86	13.29	1.63
80.0	32.92	35.59	18.35	15.37	1.04	0.42	27.93	13.30	1.68
90.0	32.87	35.54	18.11	15.42	1.04	0.42	29.11	13.24	1.74
100.0	32.82	35.56	18.18	15.38	1.04	0.43	28.33	13.15	1.59
200.0	32.16	35.30	18.66	15.32	1.05	0.48	28.22	13.03	1.82
300.0	31.31	34.88	19.68	15.20	1.06	0.53	27.23	13.03	1.94
400.0	30.40	34.32	19.99	14.81	1.07	0.57	28.13	13.09	1.89
500.0	29.49	33.64	19.97	14.51	1.07	0.60	27.34	13.09	2.01
600.0	28.60	32.90	20.03	14.19	1.08	0.61	27.06	12.95	2.15
700.0	27.72	32.14	19.80	13.99	1.08	0.62	27.40	13.03	2.13
800.0	26.94	31.35	19.55	13.69	1.07	0.63	27.14	13.17	2.38
900.0	26.19	30.62	19.40	13.48	1.07	0.63	26.61	13.17	2.25
1000.0	25.47	29.92	19.01	13.30	1.06	0.63	25.57	13.18	2.27
1100.0	24.79	29.27	18.88	13.14	1.06	0.64	25.37	13.07	2.30
1200.0	24.16	28.63	18.50	12.95	1.05	0.64	25.36	12.94	2.33
1300.0	23.54	28.05	18.06	12.95	1.05	0.64	24.74	12.94	2.38
1400.0	22.98	27.48	17.51	12.85	1.05	0.65	24.52	12.61	2.37
1500.0	22.42	26.94	17.31	12.70	1.05	0.65	24.08	12.45	2.41
1600.0	21.90	26.46	16.81	12.68	1.05	0.65	23.32	12.11	2.35
1700.0	21.41	25.95	16.17	12.62	1.04	0.65	23.48	11.95	2.36
1800.0	20.93	25.52	15.87	12.54	1.04	0.66	22.99	11.59	2.44
1900.0	20.48	25.08	15.54	12.53	1.04	0.66	22.53	11.22	2.46
2000.0	20.06	24.67	15.15	12.49	1.04	0.67	22.23	10.96	2.42
2100.0	19.61	24.31	14.88	12.55	1.04	0.67	21.75	10.46	2.51
2200.0	19.20	23.94	14.52	12.54	1.04	0.68	22.06	10.51	2.45
2300.0	18.85	23.56	14.02	12.42	1.03	0.68	21.58	10.02	2.54
2500.0	18.08	22.88	13.51	12.52	1.04	0.69	20.85	9.50	2.53
3000.0	16.44	21.42	12.39	12.91	1.04	0.72	19.20	7.94	2.59
3500.0	14.99	20.17	11.86	13.59	1.06	0.75	17.98	6.98	2.71
4000.0	13.72	19.25	11.59	14.82	1.09	0.78	17.15	5.99	2.97
4500.0	12.76	18.12	10.91	15.15	1.07	0.78	16.36	5.18	2.98
5000.0	11.87	17.29	11.14	14.92	1.08	0.78	14.99	4.21	3.06
5500.0	11.14	16.50	11.37	14.37	1.08	0.76	14.09	3.32	3.29
6000.0	10.45	15.60	11.81	14.13	1.08	0.73	13.68	2.83	3.39

Typical Performance Data

Definitions:

Input Return Loss = -S11 (dB)

Gain(Power Gain) = S21 (dB)

Reverse Isolation = -S12 (dB)

Output Return Loss = -S22 (dB)

TEST CONDITIONS: Vd = 3.65V, Id = 29.00mA @ Temperature = -55°C

FREQ	Gain	Isolation	Input Return Loss	Output Return Loss	Stability		IP-3 Output	1dB Comp. Output	Noise Figure
					K	Measure			
(MHz)	(dB)	(dB)	(dB)	(dB)			(dBm)	(dBm)	(dB)
20.0	32.34	35.21	14.99	12.70	1.04	0.40	27.48	11.94	2.86
30.0	32.30	35.18	14.67	12.49	1.04	0.40	25.33	11.68	1.67
40.0	32.27	35.12	14.80	12.30	1.04	0.39	26.50	11.37	1.81
50.0	32.17	35.48	15.31	12.37	1.05	0.45	28.00	11.43	1.57
60.0	32.17	35.07	15.21	12.65	1.04	0.41	27.95	11.70	1.75
70.0	32.16	35.07	14.95	12.44	1.04	0.40	25.38	11.59	1.63
80.0	32.11	35.04	14.92	12.36	1.04	0.40	25.18	11.60	1.67
90.0	32.07	35.01	14.82	12.40	1.04	0.41	26.51	11.50	1.72
100.0	32.02	35.05	14.89	12.40	1.04	0.42	25.55	11.23	1.59
200.0	31.43	34.75	15.40	12.55	1.04	0.47	25.50	10.98	1.92
300.0	30.68	34.35	16.38	12.75	1.05	0.52	25.24	10.97	1.98
400.0	29.86	33.82	16.89	12.75	1.05	0.56	26.37	11.13	2.06
500.0	29.02	33.19	17.20	12.77	1.05	0.59	25.42	11.11	2.04
600.0	28.20	32.49	17.47	12.76	1.05	0.61	25.14	10.87	2.19
700.0	27.37	31.78	17.57	12.77	1.06	0.62	25.35	10.99	2.12
800.0	26.63	31.02	17.48	12.66	1.05	0.63	24.90	11.31	2.38
900.0	25.92	30.32	17.45	12.62	1.05	0.63	25.15	11.36	2.24
1000.0	25.23	29.66	17.23	12.56	1.04	0.64	24.45	11.54	2.23
1100.0	24.57	29.03	17.20	12.50	1.04	0.64	24.40	11.43	2.27
1200.0	23.96	28.42	16.95	12.42	1.04	0.64	24.43	11.49	2.30
1300.0	23.35	27.84	16.59	12.48	1.04	0.65	23.90	11.52	2.38
1400.0	22.80	27.29	16.26	12.42	1.03	0.65	23.72	11.24	2.34
1500.0	22.26	26.75	16.06	12.32	1.03	0.65	23.25	11.27	2.37
1600.0	21.74	26.30	15.76	12.35	1.03	0.66	22.72	11.24	2.37
1700.0	21.26	25.82	15.17	12.33	1.03	0.67	22.80	10.87	2.33
1800.0	20.78	25.39	14.97	12.28	1.03	0.67	22.32	10.81	2.41
1900.0	20.33	24.96	14.65	12.30	1.03	0.68	22.00	10.51	2.41
2000.0	19.92	24.57	14.31	12.29	1.03	0.68	21.73	10.29	2.37
2100.0	19.47	24.22	14.14	12.38	1.03	0.69	21.29	9.85	2.47
2200.0	19.06	23.86	13.73	12.40	1.03	0.70	21.44	9.81	2.40
2300.0	18.71	23.48	13.31	12.30	1.02	0.70	21.00	9.44	2.49
2500.0	17.95	22.82	12.88	12.43	1.03	0.71	20.32	8.89	2.46
3000.0	16.30	21.40	11.88	12.92	1.04	0.75	18.79	7.49	2.54
3500.0	14.84	20.20	11.41	13.70	1.06	0.77	17.55	6.50	2.65
4000.0	13.58	19.31	11.22	15.04	1.10	0.80	16.75	5.57	2.90
4500.0	12.61	18.22	10.59	15.44	1.08	0.81	15.99	4.73	2.93
5000.0	11.71	17.39	10.84	15.26	1.09	0.80	14.67	3.75	3.02
5500.0	10.98	16.62	11.10	14.79	1.09	0.79	13.78	2.96	3.22
6000.0	10.29	15.74	11.54	14.61	1.09	0.76	13.36	2.42	3.30

Typical Performance Data

Definitions:

Input Return Loss = -S11 (dB)

Gain(Power Gain) = S21 (dB)

Reverse Isolation = -S12 (dB)

Output Return Loss = -S22 (dB)

TEST CONDITIONS: Vd = 3.74V, Id = 43.00mA @ Temperature = -55°C

FREQ	Gain	Isolation	Input Return Loss	Output Return Loss	Stability		IP-3 Output	1dB Comp. Output	Noise Figure
					K	Measure			
(MHz)	(dB)	(dB)	(dB)	(dB)	K	Measure	(dBm)	(dBm)	(dB)
20.0	33.73	36.30	22.23	19.45	1.04	0.43	32.62	14.48	2.88
30.0	33.69	36.14	21.50	18.97	1.04	0.41	29.52	14.53	1.72
40.0	33.66	36.00	21.97	18.52	1.03	0.39	31.11	14.52	1.82
50.0	33.54	36.33	23.65	18.57	1.05	0.45	35.21	14.13	1.61
60.0	33.55	36.20	22.72	19.20	1.04	0.44	32.66	14.28	1.77
70.0	33.53	36.00	22.14	18.73	1.04	0.41	30.64	14.35	1.64
80.0	33.48	35.98	21.99	18.50	1.04	0.42	30.14	14.35	1.70
90.0	33.42	36.00	21.83	18.53	1.04	0.43	32.64	14.32	1.71
100.0	33.36	36.01	21.90	18.44	1.04	0.44	30.47	14.35	1.62
200.0	32.64	35.72	22.09	17.92	1.05	0.49	29.81	14.28	1.88
300.0	31.73	35.26	22.97	17.19	1.07	0.54	29.66	14.35	1.97
400.0	30.76	34.67	22.85	16.32	1.08	0.58	29.76	14.18	1.91
500.0	29.80	33.95	22.37	15.67	1.09	0.60	28.78	14.13	2.07
600.0	28.86	33.18	22.19	15.07	1.09	0.61	29.22	14.23	2.18
700.0	27.95	32.38	21.62	14.72	1.09	0.62	28.42	14.27	2.14
800.0	27.14	31.56	21.21	14.28	1.08	0.63	27.79	14.12	2.33
900.0	26.37	30.81	20.90	13.96	1.08	0.63	27.61	14.03	2.26
1000.0	25.63	30.09	20.38	13.70	1.07	0.63	26.05	13.90	2.25
1100.0	24.94	29.43	20.15	13.48	1.07	0.63	26.28	13.97	2.32
1200.0	24.30	28.77	19.69	13.24	1.06	0.63	25.80	13.64	2.37
1300.0	23.67	28.17	19.04	13.21	1.06	0.64	25.32	13.65	2.42
1400.0	23.10	27.60	18.53	13.07	1.06	0.64	25.17	13.30	2.38
1500.0	22.54	27.05	18.16	12.89	1.06	0.64	24.45	13.05	2.47
1600.0	22.01	26.55	17.68	12.85	1.06	0.64	23.82	12.62	2.43
1700.0	21.52	26.04	16.93	12.76	1.05	0.65	23.90	12.52	2.40
1800.0	21.04	25.59	16.59	12.67	1.05	0.65	23.38	12.02	2.46
1900.0	20.58	25.13	16.22	12.65	1.05	0.65	22.93	11.62	2.45
2000.0	20.17	24.74	15.74	12.58	1.04	0.66	22.65	11.35	2.43
2100.0	19.71	24.36	15.54	12.63	1.05	0.66	22.17	10.81	2.54
2200.0	19.30	23.99	15.06	12.60	1.05	0.67	22.51	10.96	2.47
2300.0	18.95	23.60	14.52	12.48	1.04	0.67	21.99	10.46	2.56
2500.0	18.19	22.91	13.96	12.55	1.04	0.68	21.29	9.88	2.54
3000.0	16.55	21.41	12.76	12.86	1.04	0.71	19.55	8.31	2.65
3500.0	15.10	20.14	12.17	13.47	1.05	0.73	18.31	7.27	2.76
4000.0	13.84	19.19	11.84	14.63	1.08	0.76	17.49	6.33	3.05
4500.0	12.88	18.08	11.16	14.96	1.06	0.77	16.69	5.51	3.05
5000.0	11.99	17.21	11.35	14.66	1.07	0.76	15.34	4.51	3.15
5500.0	11.28	16.40	11.55	14.04	1.07	0.74	14.40	3.66	3.40
6000.0	10.58	15.51	12.02	13.79	1.06	0.71	14.02	3.18	3.51

Typical Performance Data

Definitions:

Input Return Loss = -S11 (dB)

Gain(Power Gain) = S21 (dB)

Reverse Isolation = -S12 (dB)

Output Return Loss = -S22 (dB)

TEST CONDITIONS: Vd = 3.64V, Id = 36.00mA @ Temperature = +100°C

FREQ	Gain	Isolation	Input Return Loss	Output Return Loss	Stability		IP-3 Output	1dB Comp. Output	Noise Figure
					K	Measure			
(MHz)	(dB)	(dB)	(dB)	(dB)	K	Measure	(dBm)	(dBm)	(dB)
20.0	31.06	34.49	11.63	9.60	1.04	0.38	30.50	12.52	3.47
30.0	31.03	34.46	11.65	9.60	1.04	0.38	29.62	12.31	3.41
40.0	31.01	34.43	11.69	9.60	1.04	0.38	32.26	12.62	2.96
50.0	30.94	34.68	11.74	9.60	1.05	0.42	29.02	13.00	2.99
60.0	30.97	34.29	11.78	9.64	1.03	0.37	29.42	12.58	2.84
70.0	30.91	34.40	11.84	9.69	1.04	0.39	27.62	12.41	3.22
80.0	30.88	34.38	11.89	9.72	1.04	0.40	27.41	12.45	3.01
90.0	30.85	34.35	11.92	9.74	1.04	0.40	27.13	12.40	2.92
100.0	30.81	34.35	11.98	9.77	1.04	0.40	27.29	12.18	2.92
200.0	30.24	34.27	12.29	9.93	1.05	0.47	26.46	12.18	3.42
300.0	29.49	34.01	12.67	10.07	1.06	0.54	26.35	12.05	3.27
400.0	28.68	33.64	12.98	10.30	1.07	0.60	26.36	11.87	3.41
500.0	27.84	33.12	13.15	10.52	1.08	0.64	25.52	11.99	3.35
600.0	27.02	32.52	13.30	10.68	1.09	0.68	25.55	11.75	3.42
700.0	26.21	31.88	13.27	10.87	1.09	0.70	25.36	11.90	3.51
800.0	25.44	31.19	13.18	11.03	1.08	0.72	24.70	11.72	3.79
900.0	24.71	30.51	13.11	11.18	1.08	0.74	24.79	11.62	3.67
1000.0	24.01	29.86	12.96	11.30	1.08	0.75	23.22	11.76	3.75
1100.0	23.35	29.23	12.90	11.37	1.07	0.76	23.39	11.52	3.73
1200.0	22.71	28.64	12.76	11.48	1.07	0.77	23.32	11.45	3.85
1300.0	22.11	28.08	12.60	11.57	1.07	0.78	22.44	11.08	3.92
1400.0	21.51	27.55	12.46	11.65	1.07	0.79	22.39	10.84	3.96
1500.0	20.97	27.05	12.30	11.72	1.07	0.80	21.73	10.62	3.94
1600.0	20.45	26.57	12.12	11.82	1.07	0.81	21.40	10.40	3.88
1700.0	19.91	26.14	11.91	11.95	1.08	0.82	20.90	9.90	3.90
1800.0	19.45	25.68	11.75	12.04	1.08	0.82	20.75	9.66	3.90
1900.0	18.99	25.27	11.56	12.20	1.08	0.83	20.61	9.36	3.95
2000.0	18.51	24.92	11.40	12.36	1.09	0.84	20.06	8.94	3.98
2100.0	18.08	24.57	11.23	12.44	1.09	0.85	19.84	8.74	3.97
2200.0	17.67	24.17	11.09	12.52	1.09	0.86	19.10	8.26	3.97
2300.0	17.26	23.86	10.93	12.67	1.10	0.87	19.02	8.09	4.05
2500.0	16.48	23.25	10.69	12.87	1.11	0.88	18.36	7.39	4.11
3000.0	14.73	21.95	10.23	13.60	1.15	0.91	17.00	6.11	4.25
3500.0	13.16	20.86	10.05	13.98	1.20	0.93	15.95	4.81	4.48
4000.0	11.82	19.95	10.11	14.86	1.26	0.95	14.77	3.96	4.67
4500.0	10.64	19.09	10.22	15.83	1.31	0.96	13.89	3.02	4.82
5000.0	9.65	18.29	10.45	16.98	1.35	0.96	12.76	2.23	5.01
5500.0	8.77	17.50	10.61	18.64	1.38	0.96	12.12	1.53	5.23
6000.0	8.07	16.75	11.12	18.81	1.40	0.95	10.89	0.69	5.47

Typical Performance Data

Definitions:

Input Return Loss = -S11 (dB)

Gain(Power Gain) = S21 (dB)

Reverse Isolation = -S12 (dB)

Output Return Loss = -S22 (dB)

TEST CONDITIONS: Vd = 3.59V, Id = 29.00mA @ Temperature = +100°C

FREQ	Gain	Isolation	Input Return Loss	Output Return Loss	Stability		IP-3 Output	1dB Comp. Output	Noise Figure
					K	Measure			
(MHz)	(dB)	(dB)	(dB)	(dB)	K	Measure	(dBm)	(dBm)	(dB)
20.0	29.99	33.86	9.96	7.83	1.03	0.34	31.62	11.49	3.49
30.0	29.95	33.96	9.93	7.83	1.04	0.36	27.08	11.47	3.38
40.0	29.94	33.92	9.91	7.84	1.04	0.36	31.02	11.27	2.96
50.0	29.87	34.15	9.90	7.85	1.05	0.39	28.38	11.29	2.91
60.0	29.91	33.97	9.91	7.89	1.04	0.37	29.79	11.15	2.84
70.0	29.85	33.90	9.98	7.92	1.04	0.37	26.60	11.23	3.19
80.0	29.83	33.90	10.01	7.95	1.04	0.38	26.21	11.16	2.99
90.0	29.79	33.86	10.07	7.96	1.04	0.38	26.26	11.06	2.88
100.0	29.76	33.87	10.13	7.99	1.04	0.39	25.74	11.12	2.90
200.0	29.27	33.75	10.50	8.17	1.04	0.45	24.95	10.76	3.37
300.0	28.61	33.47	10.96	8.36	1.05	0.51	25.06	10.55	3.29
400.0	27.90	33.10	11.36	8.65	1.05	0.57	25.05	10.41	3.37
500.0	27.16	32.60	11.65	8.93	1.05	0.62	24.13	10.47	3.30
600.0	26.42	32.00	11.89	9.20	1.05	0.65	24.38	10.46	3.40
700.0	25.67	31.38	11.98	9.47	1.05	0.69	23.89	10.30	3.56
800.0	24.97	30.73	11.98	9.72	1.05	0.71	23.93	10.32	3.72
900.0	24.29	30.07	11.99	9.96	1.04	0.73	23.79	10.54	3.64
1000.0	23.63	29.46	11.91	10.18	1.04	0.75	22.41	10.61	3.71
1100.0	23.00	28.85	11.89	10.33	1.04	0.76	22.71	10.64	3.71
1200.0	22.39	28.28	11.79	10.52	1.04	0.77	22.68	10.45	3.81
1300.0	21.82	27.75	11.69	10.69	1.04	0.78	21.88	10.26	3.91
1400.0	21.24	27.24	11.59	10.82	1.04	0.79	21.79	9.88	3.94
1500.0	20.71	26.76	11.47	10.95	1.04	0.80	21.11	9.81	3.93
1600.0	20.20	26.28	11.33	11.11	1.04	0.81	20.95	9.57	3.86
1700.0	19.68	25.87	11.16	11.28	1.05	0.83	20.32	9.20	3.87
1800.0	19.23	25.44	11.04	11.41	1.04	0.83	20.28	8.91	3.89
1900.0	18.78	25.05	10.89	11.62	1.05	0.84	20.04	8.53	3.89
2000.0	18.30	24.71	10.76	11.82	1.06	0.85	19.54	8.25	3.96
2100.0	17.88	24.37	10.63	11.94	1.07	0.86	19.32	8.03	3.94
2200.0	17.46	24.00	10.51	12.05	1.07	0.87	18.67	7.59	3.95
2300.0	17.06	23.71	10.38	12.24	1.08	0.88	18.53	7.35	4.00
2500.0	16.29	23.12	10.19	12.51	1.09	0.89	17.88	6.77	4.07
3000.0	14.54	21.88	9.80	13.39	1.14	0.93	16.58	5.54	4.23
3500.0	12.97	20.87	9.69	13.90	1.20	0.95	15.49	4.28	4.39
4000.0	11.63	20.02	9.79	14.84	1.27	0.97	14.36	3.48	4.58
4500.0	10.44	19.21	9.95	15.88	1.34	0.97	13.50	2.47	4.77
5000.0	9.45	18.44	10.19	17.02	1.38	0.98	12.39	1.75	4.94
5500.0	8.58	17.67	10.40	18.81	1.42	0.98	11.77	1.03	5.13
6000.0	7.87	16.94	10.94	19.09	1.44	0.96	10.57	0.25	5.39

Typical Performance Data

Definitions:

Input Return Loss = -S11 (dB)

Gain(Power Gain) = S21 (dB)

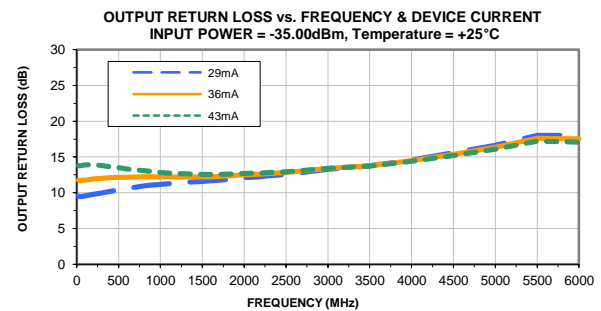
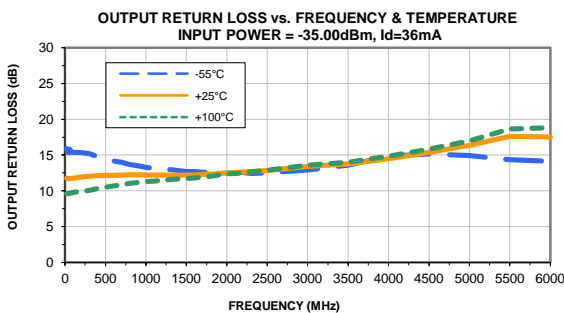
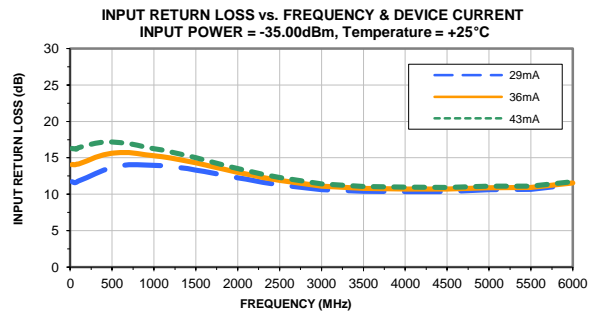
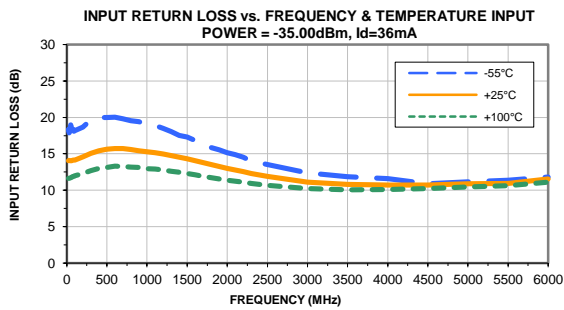
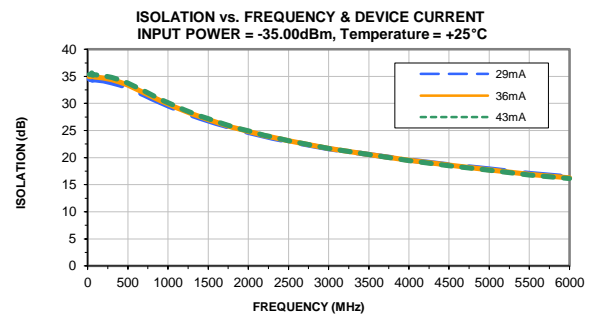
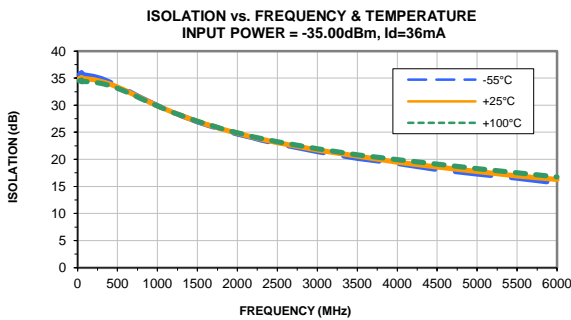
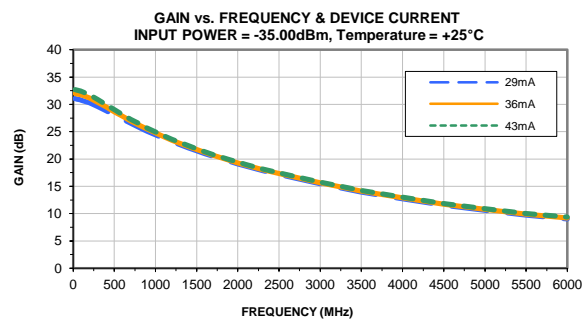
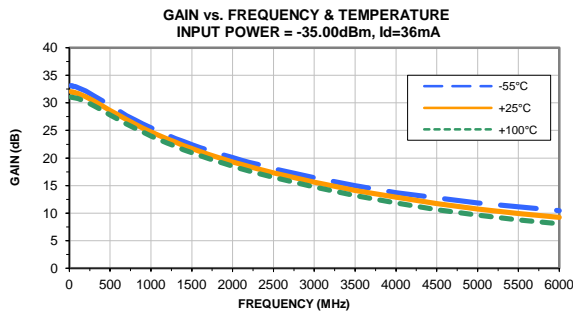
Reverse Isolation = -S12 (dB)

Output Return Loss = -S22 (dB)

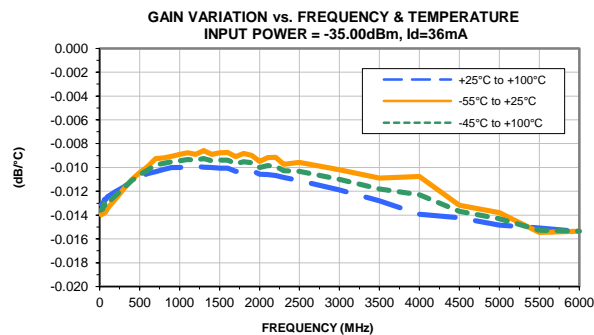
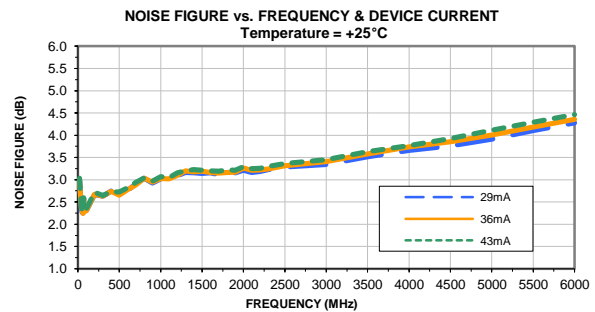
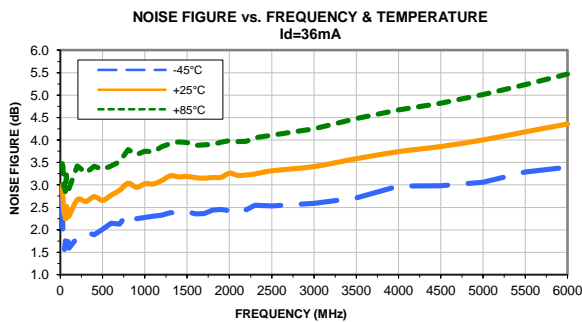
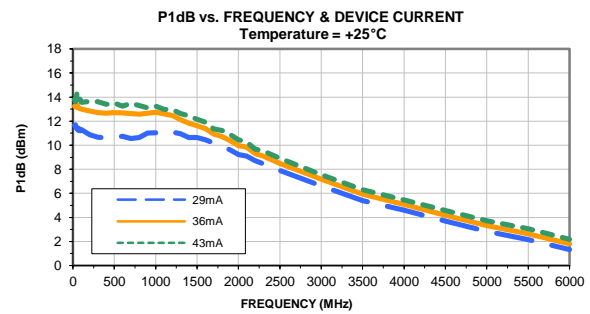
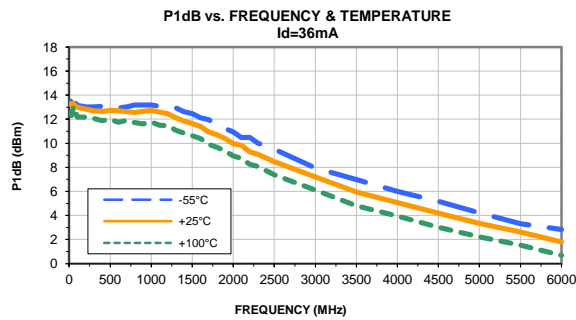
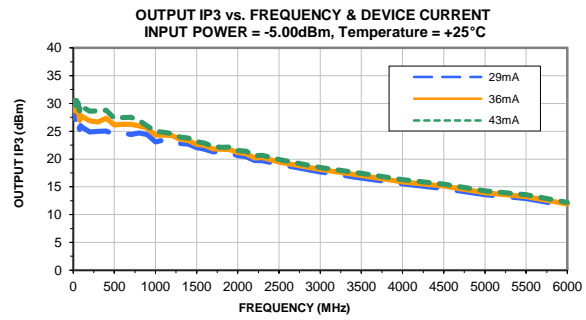
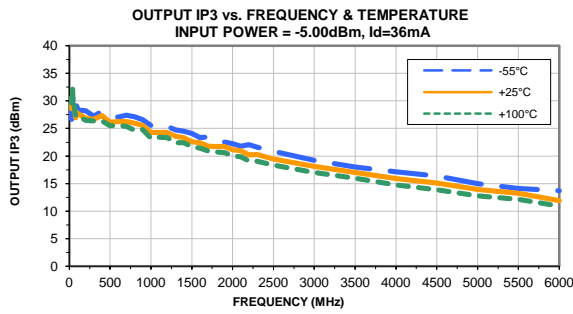
TEST CONDITIONS: Vd = 3.68V, Id = 43.00mA @ Temperature = +100°C

FREQ	Gain	Isolation	Input Return Loss	Output Return Loss	Stability		IP-3 Output	1dB Comp. Output	Noise Figure
					K	Measure			
(MHz)	(dB)	(dB)	(dB)	(dB)	K	Measure	(dBm)	(dBm)	(dB)
20.0	31.81	34.83	13.52	11.20	1.04	0.39	32.94	12.73	3.50
30.0	31.78	34.73	13.51	11.21	1.03	0.38	29.17	12.48	3.36
40.0	31.76	34.82	13.49	11.23	1.04	0.39	31.64	12.95	2.97
50.0	31.69	34.57	13.47	11.24	1.03	0.37	30.80	13.45	3.00
60.0	31.71	34.63	13.50	11.29	1.03	0.38	29.14	12.91	2.86
70.0	31.65	34.79	13.56	11.34	1.04	0.40	28.74	12.67	3.26
80.0	31.62	34.78	13.60	11.38	1.04	0.41	28.17	12.74	3.03
90.0	31.57	34.77	13.69	11.41	1.04	0.41	28.81	12.70	2.92
100.0	31.53	34.75	13.71	11.44	1.04	0.42	28.38	12.39	2.93
200.0	30.91	34.69	13.91	11.55	1.06	0.49	27.76	12.51	3.40
300.0	30.08	34.43	14.16	11.57	1.07	0.56	27.89	12.44	3.29
400.0	29.20	34.05	14.32	11.71	1.09	0.62	27.41	12.23	3.39
500.0	28.29	33.51	14.34	11.81	1.10	0.66	26.30	12.32	3.32
600.0	27.41	32.87	14.39	11.84	1.11	0.69	26.27	12.06	3.46
700.0	26.55	32.21	14.25	11.91	1.11	0.71	25.92	12.34	3.62
800.0	25.74	31.49	14.07	11.98	1.11	0.73	25.76	12.14	3.79
900.0	24.98	30.78	13.94	12.04	1.10	0.74	25.25	11.95	3.70
1000.0	24.25	30.12	13.74	12.05	1.10	0.76	23.80	12.10	3.76
1100.0	23.57	29.48	13.64	12.05	1.10	0.76	23.84	11.80	3.77
1200.0	22.91	28.86	13.44	12.11	1.10	0.77	23.75	11.82	3.86
1300.0	22.30	28.28	13.25	12.14	1.09	0.78	22.93	11.41	3.96
1400.0	21.69	27.75	13.09	12.16	1.09	0.79	22.76	11.28	4.00
1500.0	21.14	27.23	12.90	12.19	1.09	0.80	22.09	11.01	3.98
1600.0	20.61	26.74	12.68	12.26	1.09	0.80	21.73	10.77	3.93
1700.0	20.06	26.28	12.44	12.35	1.10	0.81	21.16	10.23	3.94
1800.0	19.60	25.82	12.26	12.41	1.09	0.82	21.17	10.09	3.95
1900.0	19.14	25.41	12.05	12.55	1.10	0.82	21.01	9.84	3.98
2000.0	18.66	25.05	11.86	12.68	1.10	0.83	20.46	9.37	4.09
2100.0	18.22	24.68	11.68	12.72	1.11	0.84	20.21	9.23	4.00
2200.0	17.80	24.28	11.50	12.77	1.10	0.85	19.50	8.68	4.04
2300.0	17.39	23.97	11.34	12.90	1.11	0.86	19.49	8.44	4.07
2500.0	16.62	23.32	11.08	13.05	1.12	0.87	18.77	7.82	4.15
3000.0	14.86	21.98	10.54	13.67	1.15	0.90	17.38	6.52	4.29
3500.0	13.29	20.84	10.31	13.96	1.19	0.92	16.32	5.28	4.54
4000.0	11.96	19.90	10.34	14.79	1.25	0.93	15.12	4.37	4.72
4500.0	10.79	19.02	10.43	15.70	1.29	0.94	14.23	3.40	4.89
5000.0	9.80	18.18	10.63	16.85	1.33	0.95	13.11	2.62	5.11
5500.0	8.92	17.37	10.77	18.41	1.35	0.95	12.45	1.92	5.34
6000.0	8.20	16.63	11.26	18.51	1.37	0.93	11.20	1.10	5.56

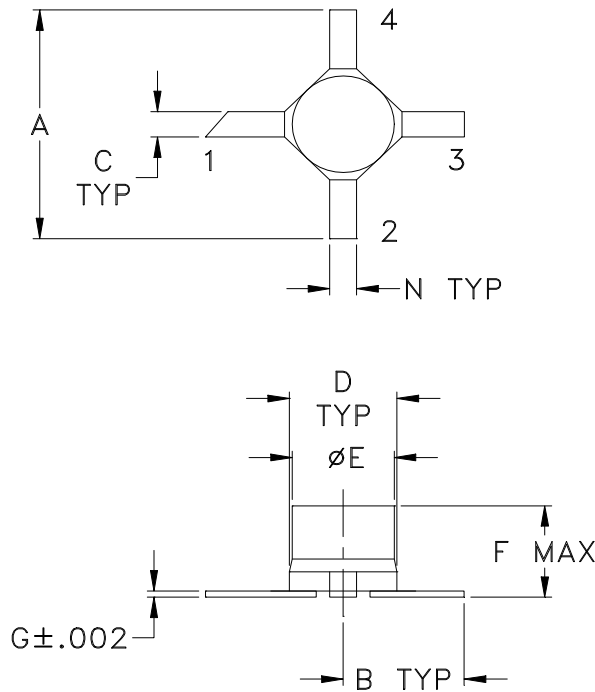
Typical Performance Curves



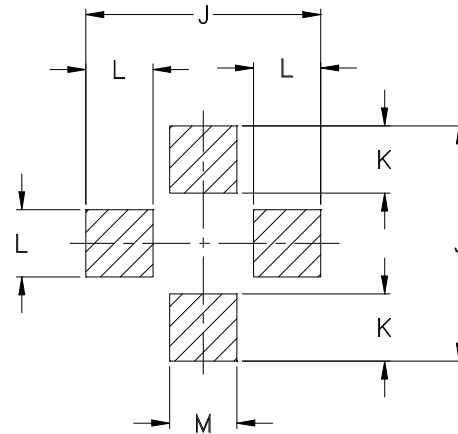
Typical Performance Curves



Outline Dimensions



PCB Land Pattern



Suggested Layout,
Tolerance to be within ± 0.002

CASE #	A	B	C	D	E	F	G	H	J	K	L	M	N	WT. GRAM
AF190	.180 (4.57)	.090 (2.29)	.020 (0.51)	.100 (2.54)	.083 (2.11)	.072 (1.83)	.005 (0.13)	-	.210 (5.33)	.060 (1.52)	.060 (1.52)	.060 (1.52)	.020 (0.51)	.04

Dimensions are in inches (mm). Tolerances: 2Pl. $\pm .03$; 3Pl. $\pm .015$

Notes:

- Case material: Ceramic.
- Termination material:
Nickel-Iron alloy 42.
- Termination finish:
For RoHS Case Styles: Tin-Silver alloy plate over Nickel barrier.
For RoHS-5 Case Styles: Tin-Lead plate.
- Termination (1):
Identified by diagonally cut lead.
- Special Tolerances: Termination width $\pm .005$ inch, termination thickness $\pm .002$ inch, cap diameter $\pm .005$ inch.



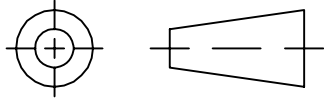
INTERNET <http://www.minicircuits.com>

P.O. Box 350166, Brooklyn, New York 11235-0003 (718) 934-4500 Fax (718) 332-4661

Distribution Centers NORTH AMERICA 800-654-7949 • 417-335-5935 • Fax 417-335-5945 • EUROPE 44-1252-832600 • Fax 44-1252-837010

Mini-Circuits ISO 9001 & ISO 14001 Certified

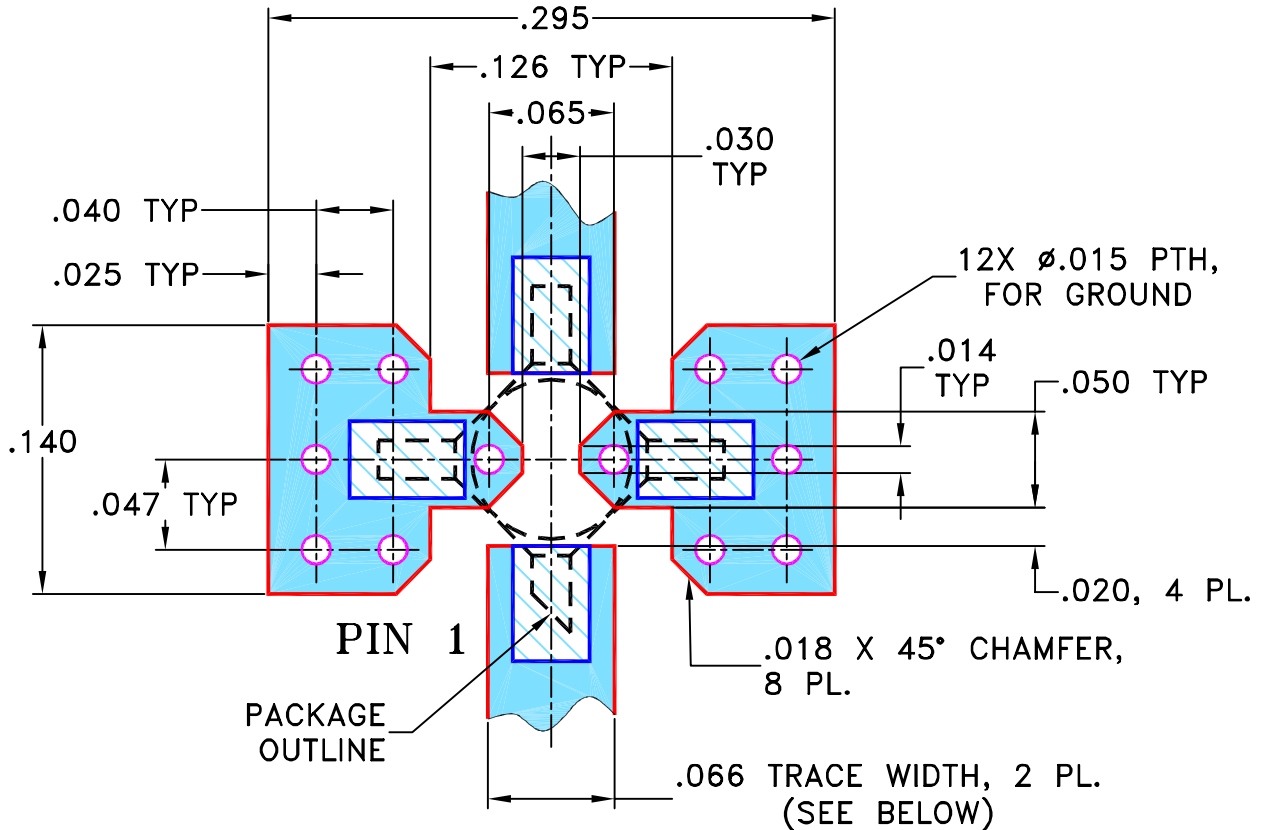
THIRD ANGLE PROJECTION



REVISIONS

REV	ECN No.	DESCRIPTION	DATE	DR	AUTH
OR	M108436	NEW RELEASE	11/14/06	PW	IG
A	M108585	UPDATED DRAWING PER TB-414+	11/24/06	PW	MM

SUGGESTED MOUNTING CONFIGURATION FOR AF190 CASE STYLE, "cb" PIN CONNECTION



NOTES:

1. TRACE WIDTH IS SHOWN FOR ROGERS R04350B WITH DIELECTRIC THICKNESS .030" ± .002"; COPPER: 1/2 OZ. EACH SIDE. FOR OTHER MATERIALS TRACE WIDTH MAY NEED TO BE MODIFIED.
2. BOTTOM SIDE OF THE PCB IS CONTINUOUS GROUND PLANE.
3. IF PCB DESIGN RULES ALLOW, PLACE GROUND VIAS UNDER THE LAND PATTERN FOR BETTER RF PERFORMANCE. OTHERWISE PLACE GROUND VIAS AS CLOSE TO LAND PATTERN AS POSSIBLE.

- DENOTES PCB COPPER LAYOUT WITH SMOBC (SOLDER MASK OVER BARE COPPER)
- DENOTES COPPER LAND PATTERN FREE OF SOLDER MASK

UNLESS OTHERWISE SPECIFIED	INITIALS	DATE
DIMENSIONS ARE IN INCHES TOLERANCES ON: 2 PL DECIMALS ± 3 PL DECIMALS ± .005 ANGLES ± FRACTIONS ±	DRAWN	PW 11/11/06
	CHECKED	IL 11/14/06
	APPROVED	IG 11/14/06

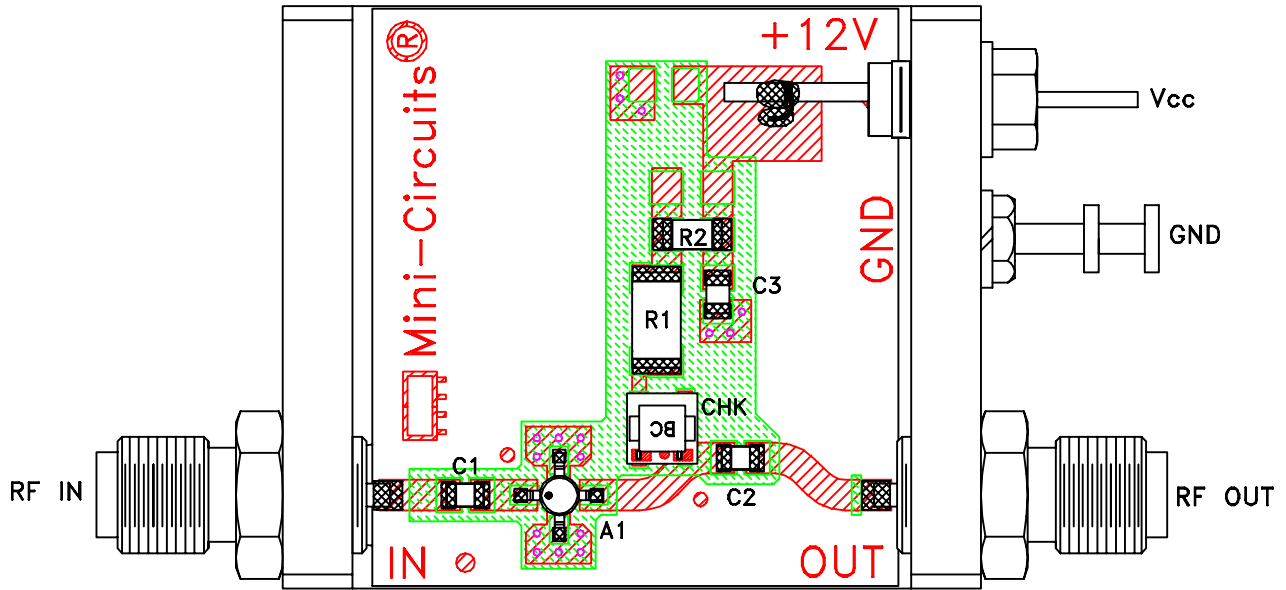
Mini-Circuits® 13 Neptune Avenue
Brooklyn NY 11235

PL, cb, AF190, RAM, TB-414-X+

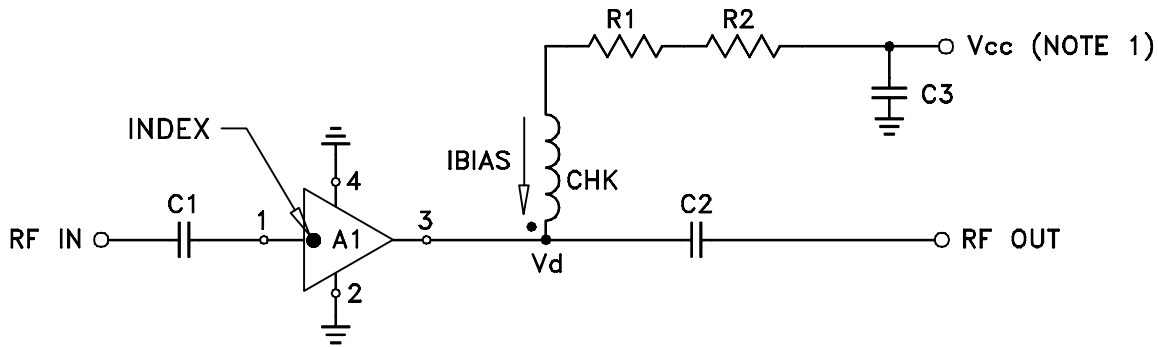
Mini-Circuits®
 THIS DOCUMENT AND ITS CONTENTS ARE THE PROPERTY OF MINI-CIRCUITS. EXCEPT FOR USE EXPRESSLY GRANTED, IN WRITING, TO ITS VENDORS, VENDEE AND THE UNITED STATES GOVERNMENT, MINI-CIRCUITS RESERVES ALL PROPRIETARY DESIGN, USE, MANUFACTURING AND REPRODUCTION RIGHTS THERETO. THESE CONTENTS SHALL NOT BE USED, DUPLICATED OR DISCLOSED TO ANY OUTSIDE PARTY, IN WHOLE OR IN PART, WITHOUT WRITTEN PERMISSION OF MINI-CIRCUITS.

SIZE A	CODE IDENT 15542	DRAWING NO: 98-PL-254	REV: A
FILE: 98PL254	SCALE: 10:1	SHEET: 1 OF 1	

Evaluation Board and Circuit



TB-414-8A+




COMPONENT	VALUE
A1	RAM-8A(+)
C1 (NOTE 4)	2400 pF
C2 (NOTE 4)	2400 pF
C3 (bypass)	0.1 uF
R1	232 Ohms, 0.75W
R2	0 Ohms, 0.25W
CHK	Mini-Circuits TCCH-80+

Schematic Diagram

NOTE:

1. Vcc voltage: $+12 \pm 0.2V$.
2. SMA Female connectors.
3. PCB material: Rogers R04350 or equivalent, dielectric constant=3.5, dielectric thickness=.030 inch.
4. Capacitors, C1 & C2 should be free of resonance up to the highest frequency specified.

 **Mini-Circuits®**



All Mini-Circuits products are manufactured under exacting quality assurance and control standards, and are capable of meeting published specifications after being subjected to any or all of the following physical and environmental test.

Specification	Test/Inspection Condition	Reference/Spec
Operating Temperature	-54° to 100°C Ambient Environment	Individual Model Data Sheet
Storage Temperature	-65° to 150° C Ambient Environment	Individual Model Data Sheet
Thermal Shock	-55° to 100°C, 100 cycles	MIL-STD-202, Method 107, Condition A-3, except +100°C
Mechanical Shock	1500g, 0.5 ms, 5 shock pulses, Y1 direction only	MIL-STD-883, Method 2002, Condition B, except Y1 direction only
Vibration (Variable Frequency)	50g peak, 20-2000 Hz, 4 times in each of three perpendicular directions (total 12)	MIL-STD-883, Method 2007, Condition B
Autoclave	15 psig, 100% RH, 121°C, 96 hours	JEDEC-STD-22-B, Method A102
HAST	130°C, 85% RH, 96 hours	JESD22-A110
Solderability	10X Magnification	J-STD-002, Para 4.2.5, Test S, 95% Coverage
Solder Reflow Heat	Sn-Pb Eutectic Process: 240°C peak Pb-Free Process: 260°C peak	J-STD-020C, Table 4-1, 4-2 and 5-2; Figure 5-1
Moisture Sensitivity: Level 1	Bake at 125°C for 24 hours Soak at 85°C/85% RH for 168 hours, Reflow 3 cycles at 260°C peak	J-STD-020C
Marking Resistance to Solvents	Isopropyl alcohol + mineral spirits at 25°C; terpene defluxer at 25°C;	MIL-STD-202, Method 215



All Mini-Circuits products are manufactured under exacting quality assurance and control standards, and are capable of meeting published specifications after being subjected to any or all of the following physical and environmental test.

Specification	Test/Inspection Condition	Reference/Spec
	distilled water + proylene glycol monomethyl ether + monoethanolamine at 63°C to 70°C	