



LTCC SURFACE MOUNT

Low Pass Filter

LFCG-700+

50Ω DC to 700 MHz

THE BIG DEAL

- Insertion Loss, 1.2dB Typ.
- Stop Band Rejection, 46dB Typ.
- Pass Band Return Loss, 15dB Typ.
- 0805 Surface Mount Footprint
- Power Handling: 3.5W

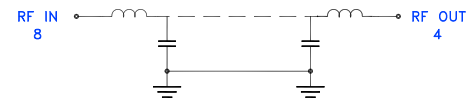


Generic photo used for illustration purposes only

APPLICATIONS

- Harmonic Rejection
- VHF/UHF Transmitters / Receivers
- Test and Measurement
- Telecommunications & Broadband Wireless Applications
- Satcom Modems

FUNCTIONAL DIAGRAM



PRODUCT OVERVIEW

Mini-Circuits' LFCG-700+ is a miniature low temperature co-fired ceramic (LTCC) low pass filter with a DC to 700MHz passband that supports a variety of applications. This model provides 1.2dB typical insertion loss over a wide band, due to its rugged monolithic construction. Housed in a 0805 ceramic form factor, this filter is ideal for dense signal chain PCB layouts, where it complements MMIC size and performance. The LTCC fabrication process assures minimal RF performance variation while delivering a product that is well suited for environmental extremes of high humidity and temperature.

KEY FEATURES

Features	Advantages
Ultra-wide Stopband	Provides very good stopband rejection up to 8.5GHz, suitable for wide band applications.
LTCC Construction	The use of LTCC technology allows for repeatable performance in a rugged ceramic package, well suited for tough environments such as high humidity and temperature extremes. See Mini-Circuits Environmental Rating ENV06T11 for more information.
Small Size, 0805	0805 package allows for space to be saved in dense circuit board layouts, while also minimizing the effects of parasitics.
Rugged Power Handling, 3.5W	Handles up to 3.5 Watts in a small 0805 package.





ELECTRICAL SPECIFICATIONS^{1,2,3} AT +25°C

Parameter		F#	Frequency (MHz)	Min.	Typ.	Max.	Units
Pass Band	Insertion Loss	DC-F1	DC - 700	—	1.2	2	dB
	Freq. Cut-Off ⁴	Fc	880	—	3	—	dB
	Return Loss	DC-F1	DC - 700	—	15	—	dB
Stop Band	Rejection	F2-F3	1100 - 1600	20	37	—	dB
		F3-F4	1600 - 3800	35	46	—	
		F4-F5	3800 - 8500	—	17	—	

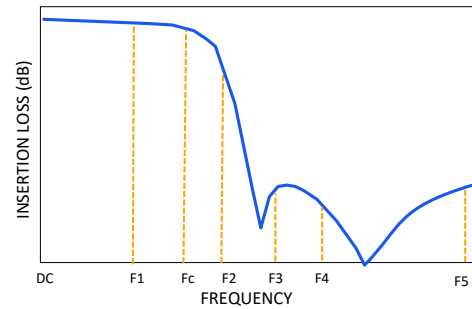
1. Tested on Evaluation Board P/N TB-LFCG-700+ .
2. Bi-directional RF1 and RF2 ports can be interchanged
3. In applications where DC voltage and/or current is present at either the input or output ports, external DC blocking capacitors are required.
4. Typical variation ± 5%

ABSOLUTE MAXIMUM RATINGS⁵

Parameter	Ratings
Operating Temperature	-55°C to +125°C
Storage Temperature	-55°C to +125°C
Input Power ⁶	3.5W @25°C

5. Permanent damage may occur if any of these limits are exceeded.
6. Power rating applies only to signals within the passband. Power rating above +25°C operating temperature decreases linearly to 0.8W at +125°C.

TYPICAL FREQUENCY RESPONSE AT +25°C





LTCC SURFACE MOUNT

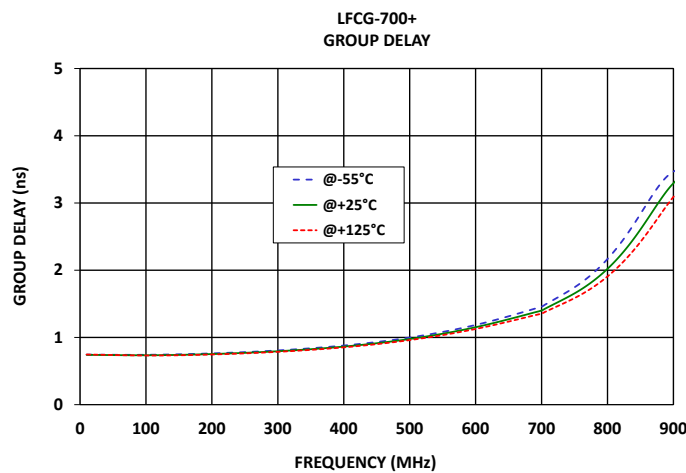
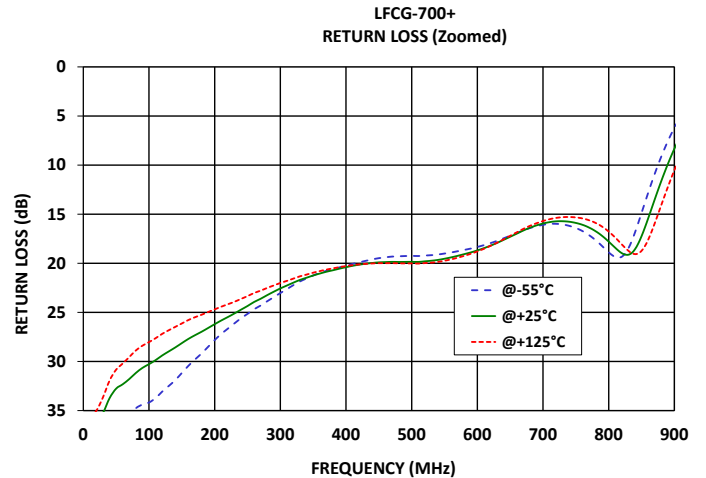
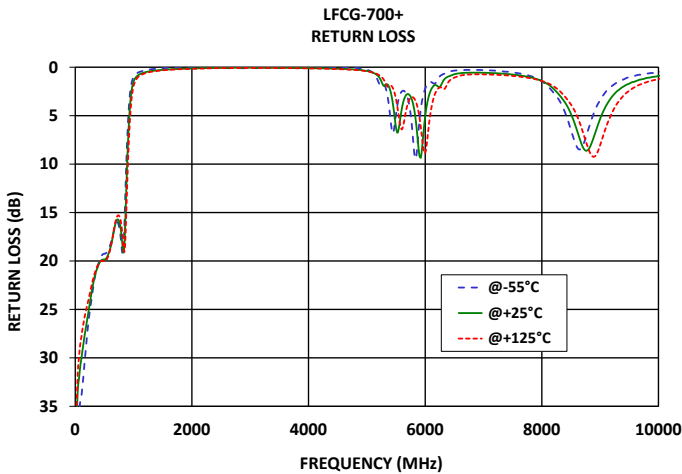
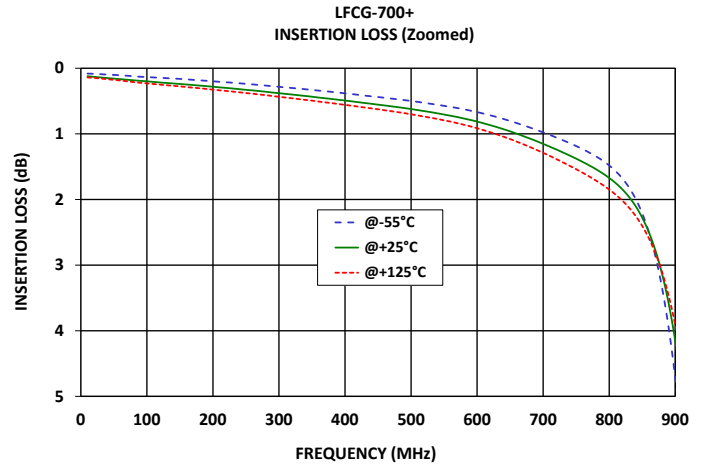
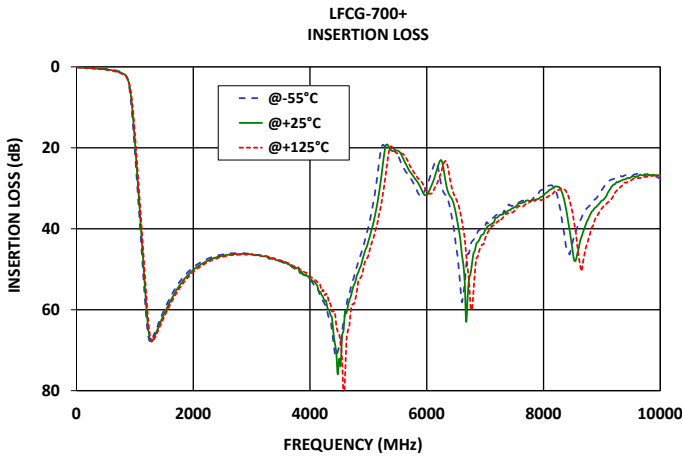
Low Pass Filter

LFCG-700+

Mini-Circuits

50Ω DC to 700 MHz

TYPICAL PERFORMANCE GRAPHS





FUNCTIONAL DIAGRAM

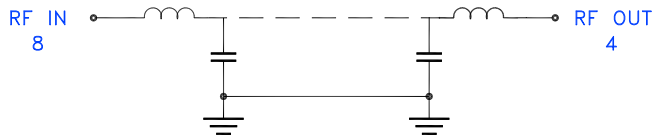
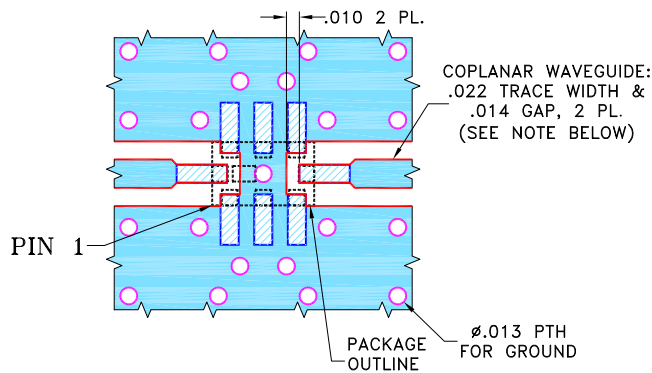


Figure 1. LFCG-700+ Functional Diagram

PAD DESCRIPTION

Function	Pad Number	Description
RF1 ²	8	Connects to RF Input Port
RF2 ²	4	Connects to RF Output Port
GROUND	1,2,3,5,6,7	Connects to Ground on PCB, (See drawing PL-429)
NC	—	No connection, not used internally. See drawing PL-429 for connection to PCB

SUGGESTED PCB LAYOUT (PL-429)



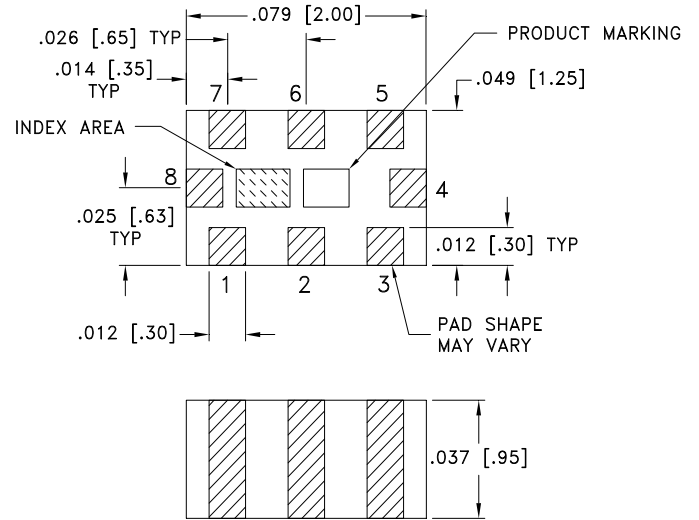
NOTES:

1. COPLANAR WAVEGUIDE IS SHOWN FOR ROGERS R04350B WITH DIELECTRIC THICKNESS .010" ± .001". COPPER: 1/2 OZ. EACH SIDE. FOR OTHER MATERIALS TRACE WIDTH AND GAP MAY NEED TO BE MODIFIED.
2. BOTTOM SIDE OF THE PCB IS CONTINUOUS GROUND PLANE.

- DENOTES PCB COPPER LAYOUT WITH SMOBC (SOLDER MASK OVER BARE COPPER).
- DENOTES COPPER LAND PATTERN FREE OF SOLDER MASK.

Figure 2. Suggested PCB Layout PL-429

CASE STYLE DRAWING



METALLIZATION

Weight: .008 grams.

Dimensions are in inches (mm). Tolerances: 2Pl. ± .01; 3 Pl. ± .005

PRODUCT MARKING*: WB

*Marking may contain other features or characters for internal lot control.



LTCC SURFACE MOUNT

Low Pass Filter

LFCG-700+

50Ω DC to 700 MHz

ADDITIONAL DETAILED INFORMATION IS AVAILABLE ON OUR DASH BOARD.

[CLICK HERE](#)

Performance Data and Graphs	Data
	Graphs
	S-Parameter (S2P Files) Data Set (.zip file) De-embedded to device pads
Case Style	GE0805C-2 Lead Finish: Nickel-Tin
RoHS Status	Compliant
Tape and Reel	TR-F114
Suggested Layout for PCB Design	PL-429
Evaluation Board	TB-LFCG-700+
	Gerber File
Environmental Rating	ENV06T11

NOTES

- A. Performance and quality attributes and conditions not expressly stated in this specification document are intended to be excluded and do not form a part of this specification document.
- B. Electrical specifications and performance data contained in this specification document are based on Mini-Circuits' applicable established test performance criteria and measurement instructions.
- C. The parts covered by this specification document are subject to Mini-Circuits' standard limited warranty and terms and conditions (collectively, "Standard Terms"); Purchasers of this part are entitled to the rights and benefits contained therein. For a full statement of the standard terms and the exclusive rights and remedies thereunder, please visit Mini-Circuits' website at www.minicircuits.com/terms/viewterm.html



Typical Performance Data

FREQ. (MHz)	INSERTION LOSS			INPUT RETURN LOSS			OUTPUT RETURN LOSS		
	(dB)			(dB)			(dB)		
	@-55°C	@+25°C	@+125°C	@-55°C	@+25°C	@+125°C	@-55°C	@+25°C	@+125°C
10	0.08	0.12	0.14	39.82	36.74	35.66	41.50	37.62	36.64
20	0.09	0.13	0.15	40.11	36.14	35.00	39.94	35.99	34.87
30	0.09	0.14	0.16	39.90	35.24	33.64	38.47	34.61	33.15
40	0.10	0.15	0.17	37.68	33.73	31.94	36.16	32.94	31.37
50	0.10	0.16	0.18	36.45	32.76	30.83	34.36	31.56	29.96
60	0.11	0.17	0.19	36.19	32.32	30.21	33.27	30.66	28.97
80	0.12	0.18	0.21	34.77	31.17	28.88	31.39	29.03	27.22
100	0.13	0.20	0.23	34.18	30.27	28.03	29.81	27.56	25.94
120	0.15	0.22	0.25	33.07	29.39	27.19	28.36	26.29	24.79
140	0.16	0.23	0.27	31.90	28.57	26.48	26.66	25.04	23.69
160	0.17	0.25	0.29	30.44	27.70	25.78	25.15	23.98	22.72
180	0.18	0.26	0.31	29.19	26.98	25.24	23.89	23.07	21.90
200	0.20	0.28	0.33	27.82	26.20	24.69	22.92	22.27	21.21
220	0.21	0.30	0.35	26.66	25.48	24.17	22.05	21.50	20.54
240	0.23	0.32	0.37	25.61	24.73	23.63	21.21	20.74	19.89
260	0.25	0.34	0.39	24.68	23.94	23.03	20.42	20.06	19.28
280	0.26	0.36	0.41	23.87	23.24	22.51	19.69	19.45	18.75
300	0.28	0.38	0.43	23.03	22.56	22.01	19.21	19.03	18.37
320	0.30	0.40	0.46	22.22	21.97	21.56	18.85	18.68	18.08
340	0.32	0.42	0.48	21.54	21.47	21.15	18.58	18.39	17.85
360	0.34	0.45	0.51	20.99	21.05	20.80	18.31	18.12	17.64
400	0.38	0.49	0.56	20.24	20.39	20.29	17.98	17.86	17.52
450	0.44	0.56	0.63	19.48	19.91	19.99	18.25	18.25	18.09
500	0.50	0.62	0.70	19.25	19.85	20.01	19.03	19.19	19.31
550	0.57	0.71	0.79	19.01	19.54	19.74	20.24	20.73	21.27
600	0.67	0.81	0.91	18.34	18.69	18.79	20.36	21.00	21.68
650	0.80	0.96	1.08	17.19	17.30	17.20	18.39	18.74	19.03
700	0.98	1.15	1.29	16.09	15.95	15.70	16.35	16.28	16.24
880	3.34	3.13	3.11	9.14	11.64	14.09	9.38	10.94	12.12
950	11.28	9.49	8.25	2.17	3.19	4.34	4.12	5.33	6.73
1000	20.86	18.40	16.37	1.02	1.48	1.95	2.59	3.36	4.31
1100	41.93	39.04	36.48	0.49	0.74	0.91	1.22	1.56	1.94
1200	62.59	59.99	57.25	0.31	0.52	0.62	0.67	0.87	1.08
1300	67.22	67.68	67.69	0.21	0.40	0.48	0.42	0.56	0.69
1400	63.51	64.48	65.06	0.16	0.33	0.39	0.28	0.39	0.49
1500	60.14	61.13	61.83	0.10	0.27	0.33	0.19	0.28	0.36
1600	57.08	58.15	58.83	0.07	0.23	0.28	0.14	0.22	0.28
1800	52.47	53.31	53.96	0.01	0.16	0.20	0.07	0.14	0.18
2000	49.50	50.16	50.68	0.02	0.13	0.18	0.03	0.09	0.13
2200	47.73	48.24	48.64	0.04	0.10	0.14	0.02	0.08	0.11
2400	46.64	47.04	47.33	0.08	0.07	0.10	0.01	0.06	0.09
2600	46.13	46.40	46.63	0.09	0.06	0.08	0.00	0.06	0.10
2800	46.07	46.25	46.40	0.09	0.06	0.07	0.00	0.06	0.10
3000	46.22	46.27	46.39	0.10	0.05	0.06	0.00	0.07	0.11
3200	46.79	46.84	46.80	0.08	0.06	0.09	0.01	0.09	0.13
3400	47.57	47.61	47.44	0.08	0.06	0.08	0.01	0.10	0.15
3600	48.76	48.53	48.36	0.09	0.07	0.09	0.02	0.11	0.17
3800	50.33	49.66	49.56	0.07	0.09	0.11	0.03	0.13	0.19
4000	52.62	52.48	51.77	0.07	0.10	0.12	0.04	0.14	0.22
4200	57.05	56.39	55.39	0.05	0.11	0.14	0.04	0.15	0.23
4400	67.82	65.59	60.43	0.04	0.15	0.18	0.05	0.17	0.26
4600	61.02	60.38	76.60	0.00	0.18	0.22	0.06	0.18	0.28
5000	39.56	43.07	46.62	0.27	0.39	0.42	0.12	0.24	0.35
5500	21.66	20.70	21.37	4.85	6.26	3.30	0.23	0.48	0.69
6000	29.43	31.57	30.76	2.23	5.09	8.89	0.16	0.29	0.44
6500	44.29	36.31	32.55	0.36	0.73	1.08	0.19	0.40	0.64
7000	39.28	40.30	42.46	0.30	0.57	0.74	0.19	0.34	0.48
7500	34.00	34.71	35.60	0.54	0.76	0.91	0.47	0.48	0.54
8000	29.99	31.70	32.86	1.46	1.43	1.42	0.74	1.24	2.18
8500	43.24	45.57	36.24	6.50	4.83	3.86	0.61	0.75	0.97

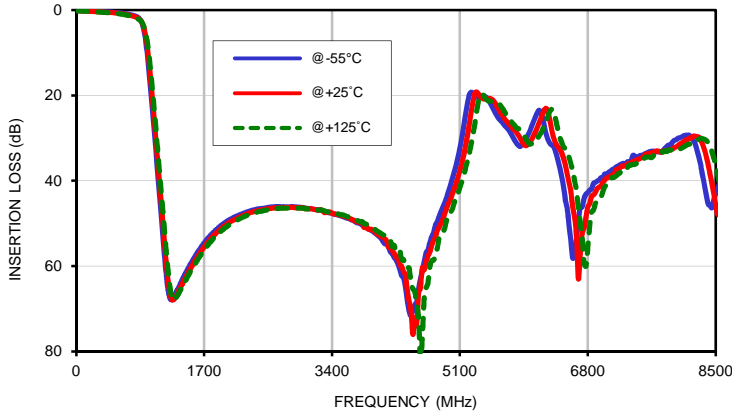


Typical Performance Data

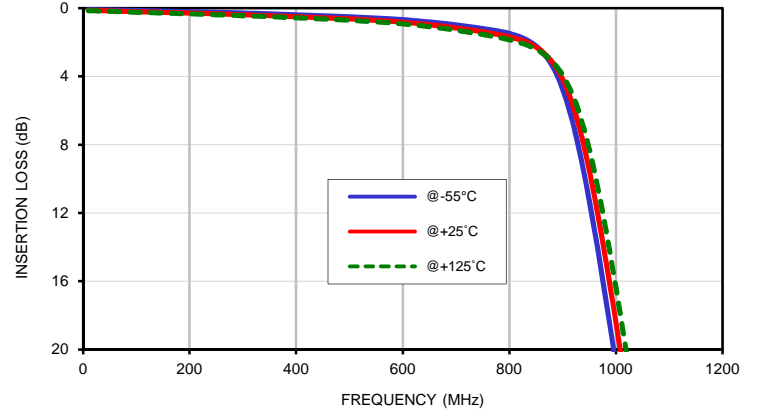
FREQ. (MHz)	GROUP DELAY		
	(nsec)		
	@-55°C	@+25°C	@+125°C
10	0.74	0.74	0.75
20	0.74	0.74	0.74
30	0.74	0.74	0.74
40	0.74	0.74	0.74
50	0.74	0.74	0.74
60	0.74	0.74	0.74
80	0.74	0.74	0.73
100	0.74	0.73	0.73
120	0.74	0.74	0.73
140	0.75	0.74	0.73
160	0.75	0.74	0.74
180	0.76	0.75	0.74
200	0.76	0.75	0.75
220	0.77	0.76	0.75
240	0.78	0.77	0.76
260	0.79	0.78	0.77
280	0.80	0.78	0.78
300	0.81	0.79	0.79
320	0.82	0.81	0.80
340	0.83	0.82	0.81
360	0.85	0.83	0.82
380	0.86	0.85	0.84
400	0.88	0.86	0.85
420	0.90	0.88	0.87
440	0.92	0.90	0.89
460	0.94	0.93	0.91
480	0.97	0.95	0.93
500	1.00	0.98	0.96
520	1.03	1.01	0.99
540	1.06	1.04	1.02
560	1.10	1.07	1.05
580	1.14	1.11	1.09
600	1.19	1.15	1.13
620	1.23	1.20	1.17
640	1.29	1.25	1.21
650	1.31	1.27	1.24
660	1.34	1.30	1.26
670	1.37	1.32	1.28
680	1.40	1.35	1.31
690	1.43	1.37	1.33
700	1.46	1.40	1.35

Typical Performance Curves

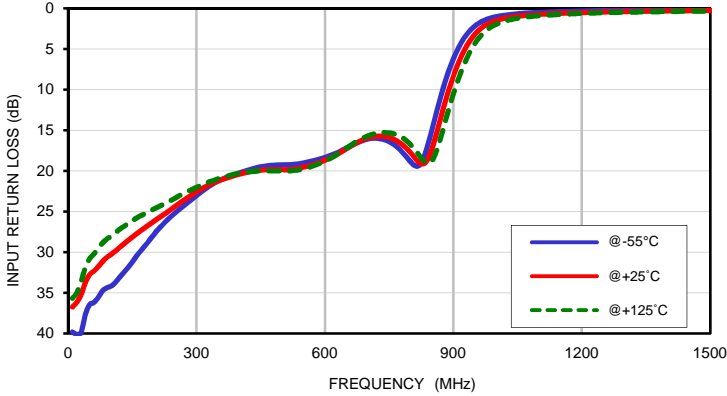
INSERTION LOSS vs. TEMPERATURE
INPUT POWER = 0 dBm



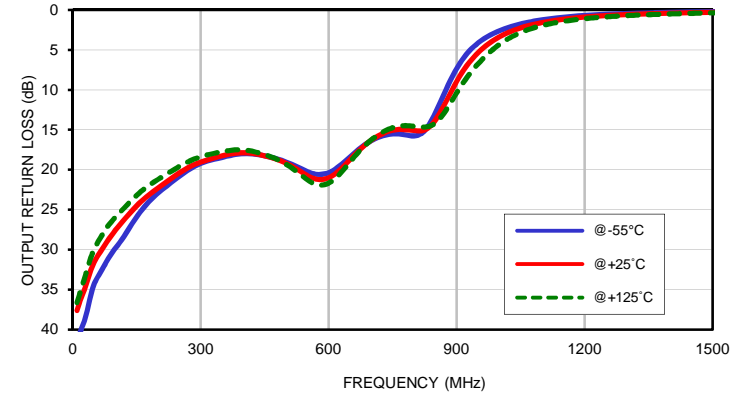
INSERTION LOSS vs. TEMPERATURE (Zoomed)
INPUT POWER = 0 dBm



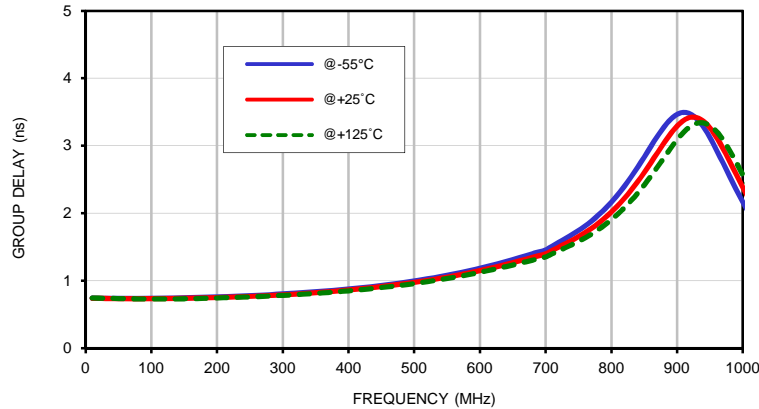
INPUT RETURN LOSS vs. TEMPERATURE
INPUT POWER = 0 dBm



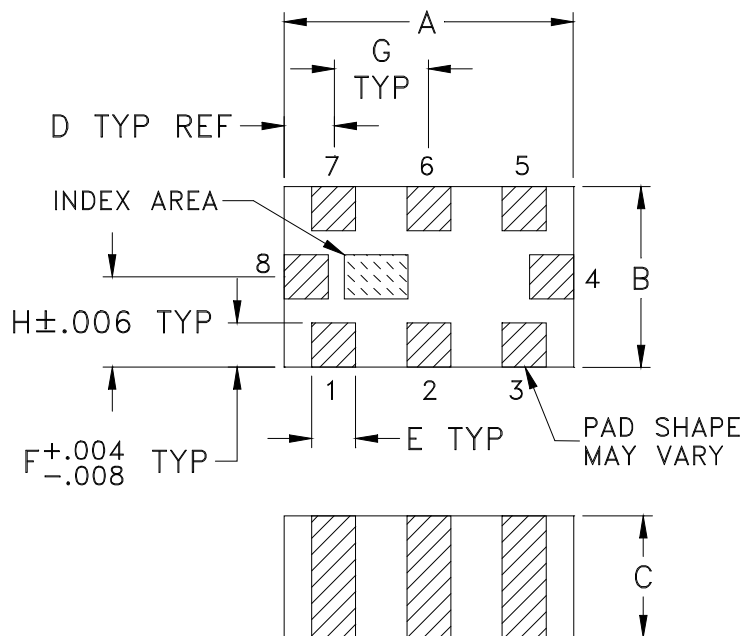
OUTPUT RETURN LOSS vs. TEMPERATURE
INPUT POWER = 0 dBm



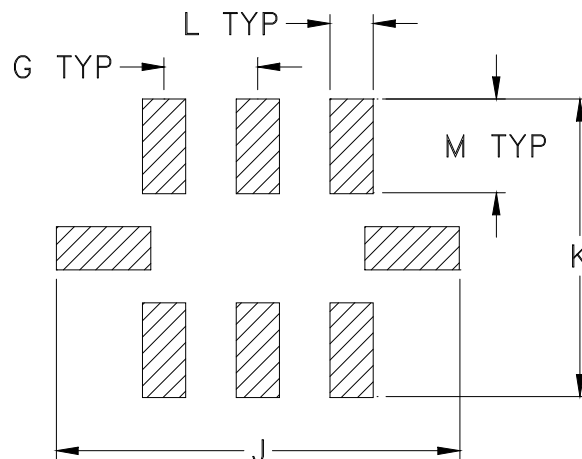
GROUP DELAY vs. TEMPERATURE
INPUT POWER = 0 dBm



Outline Dimensions



PCB Land Pattern



Suggested Layout,
Tolerance to be within $\pm.002$

CASE #	A	B	C	D	E	F	G	H	J	K	L
GE0805C-2	.079 (2.00)	.049 (1.25)	.037 (0.95)	.014 (0.35)	.012 (0.30)	.012 (0.30)	.026 (0.65)	.025 (0.63)	.134 (3.40)	.110 (2.80)	.014 (0.35)

CASE #	M	WT. GRAM
GE0805C-2	.039 (1.00)	.008

Dimensions are in inches (mm). Tolerances: 2Pl. $\pm .01$; 3 Pl. $\pm .005$

Notes:

- Open style, ceramic base.
- Termination finish: For RoHS Case Styles: Tin plate over Nickel plate. All models, (+) suffix.
For RoHS-5 Case Styles: Tin-Lead plate over Nickel plate. All models, no (+) suffix.
- Pad tolerance to be non-cumulative. Minimum spacing between each pad is .004 (0.1).



P.O. Box 350166, Brooklyn, New York 11235-0003 (718) 934-4500 Fax (718) 332-4661 For detailed performance specs & shopping online see Mini-Circuits web site



Provides ACTUAL Data Instantly From MINI-CIRCUITS At: www.minicircuits.com

RF/IF MICROWAVE COMPONENTS

Tape & Reel Packaging TR-F114

DEVICE ORIENTATION IN T&R

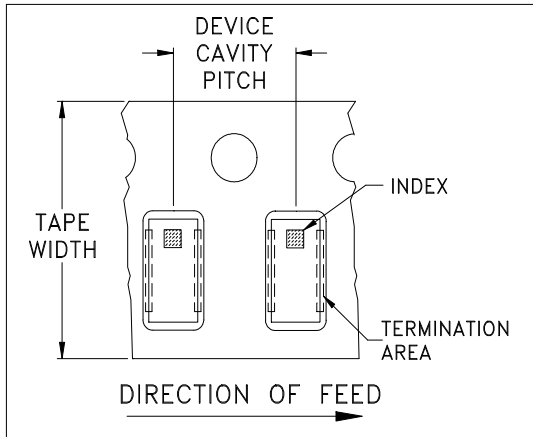


ILLUSTRATION 1

Applicable Case Styles	
GE0805C	JC0603C
GE0805C-1	JC0603C-4
GE0805C-1AP	JC0603C-6
GE0805C-7	
GE0805C-9	
GE0805C-10	
GE0805C-11	
GE0805C-12	

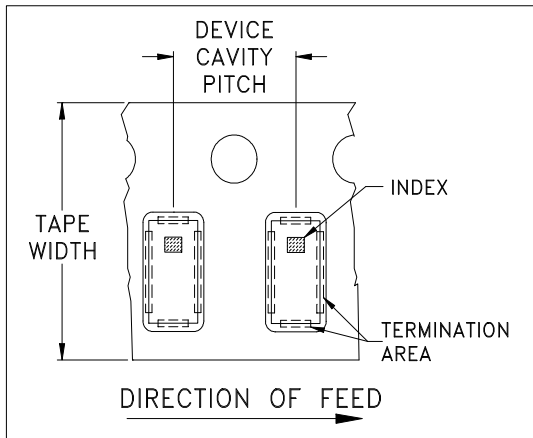


ILLUSTRATION 2

Applicable Case Styles	
GE0805C-2	JC0603C-1
GE0805C-3	JC0603C-2
GE0805C-4	JC0603C-3
GE0805C-5	JC0603C-5
GE0805C-6	JC0603C-7
GE0805C-8	JV1210C-1
GE0805C-15	

Tape Width, mm	Device Cavity Pitch, mm	Reel Size, inches	Devices per Reel	
8	4	7	Small quantity standards (see note)	20
				50
				100
				200
				500
				1000
			Standard	4000

Note: Please Consult individual model data sheet to determine device per reel availability.

Mini-Circuits carrier tape materials provide protection from ESD (Electro-Static Discharge) during handling and transportation. Tapes are static dissipative and comply with industry standards EIA-481/EIA-541.

Go to: www.minicircuits.com/pages/pdfs/tape.pdf



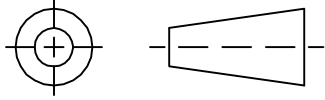
INTERNET <http://www.minicircuits.com>

P.O. Box 350166, Brooklyn, New York 11235-0003 (718) 934-4500 Fax (718) 332-4661

Distribution Centers NORTH AMERICA 800-654-7949 • 417-335-5935 • Fax 417-335-5945 • EUROPE 44-1252-832600 • Fax 44-1252-837010

Mini-Circuits ISO 9001 & ISO 14001 Certified

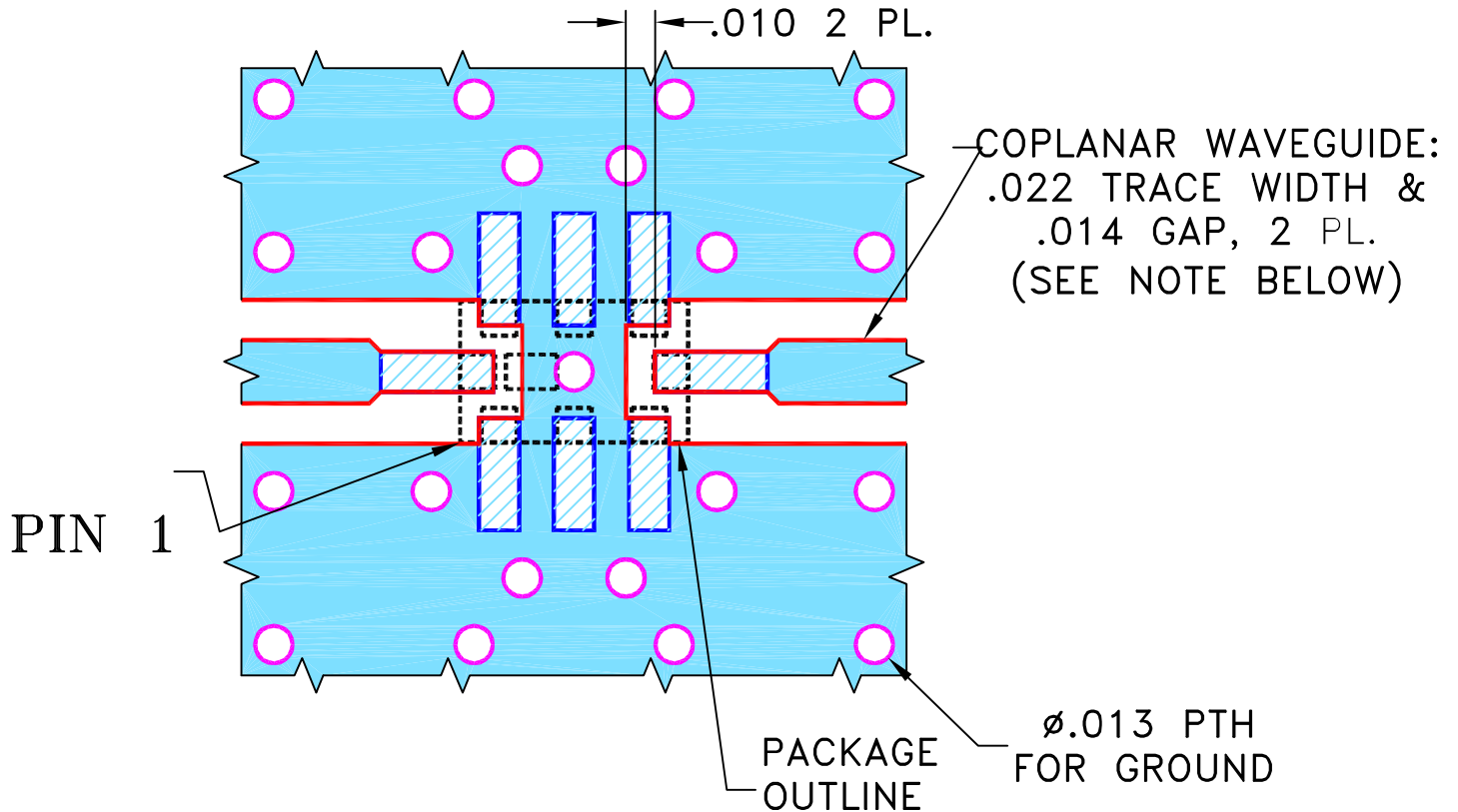
THIRD ANGLE PROJECTION



REVISIONS

REV	ECN No.	DESCRIPTION	DATE	DR	AUTH
OR	M148457	NEW RELEASE	10/14/14	GF	MY

SUGGESTED MOUNTING CONFIGURATION
FOR GE0805C-4 CASE STYLE, "08FL07" PIN CODE



NOTES:

1. COPLANAR WAVEGUIDE IS SHOWN FOR ROGERS R04350B WITH DIELECTRIC THICKNESS .010" ± .001". COPPER: 1/2 OZ. EACH SIDE. FOR OTHER MATERIALS TRACE WIDTH AND GAP MAY NEED TO BE MODIFIED.
2. BOTTOM SIDE OF THE PCB IS CONTINUOUS GROUND PLANE.



DENOTES PCB COPPER LAYOUT WITH SMOBC (SOLDER MASK OVER BARE COPPER).

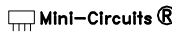


DENOTES COPPER LAND PATTERN FREE OF SOLDER MASK.

UNLESS OTHERWISE SPECIFIED	INITIALS	DATE
DIMENSIONS ARE IN INCHES	DRAWN GF	10/01/14
TOLERANCES ON:	CHECKED IL	10/14/14
2 PL DECIMALS ±	APPROVED MY	10/14/14
3 PL DECIMALS ± .005		
ANGLES ±		
FRACTIONS ±		

 **Mini-Circuits®** 13 Neptune Avenue
Brooklyn NY 11235

PL, 08FL07, GE0805C-4, TB-799+

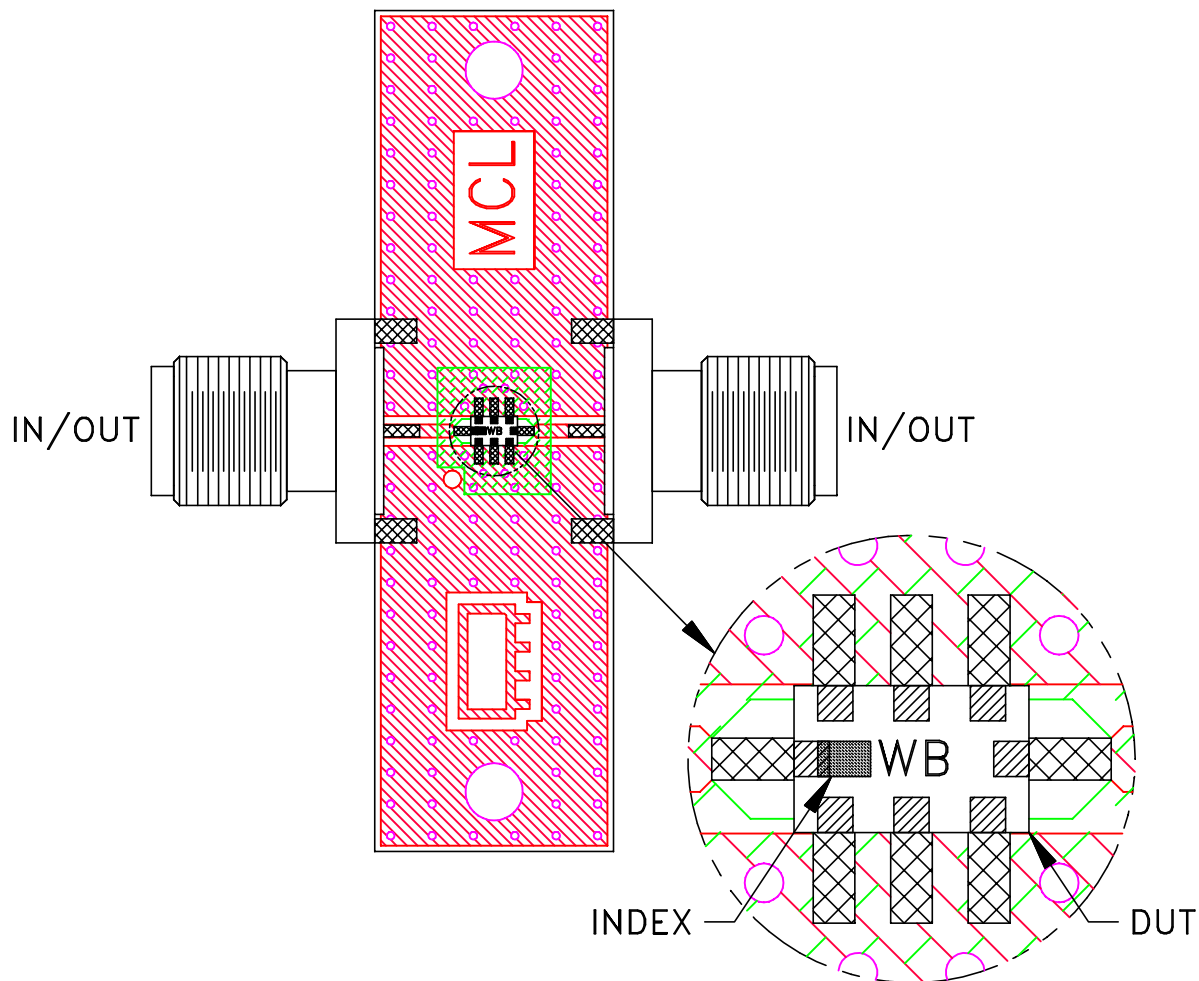
 Mini-Circuits®
THIS DOCUMENT AND ITS CONTENTS ARE THE PROPERTY OF MINI-CIRCUITS. EXCEPT FOR USE EXPRESSLY GRANTED, IN WRITING, TO ITS VENDORS, VENDEE AND THE UNITED STATES GOVERNMENT, MINI-CIRCUITS RESERVES ALL PROPRIETARY DESIGN, USE, MANUFACTURING AND REPRODUCTION RIGHTS THERETO. THESE CONTENTS SHALL NOT BE USED, DUPLICATED OR DISCLOSED TO ANY OUTSIDE PARTY, IN WHOLE OR IN PART, WITHOUT WRITTEN PERMISSION OF MINI-CIRCUITS.

SIZE	CODE IDENT	DRAWING NO:	REV:
A	15542	98-PL-429	OR

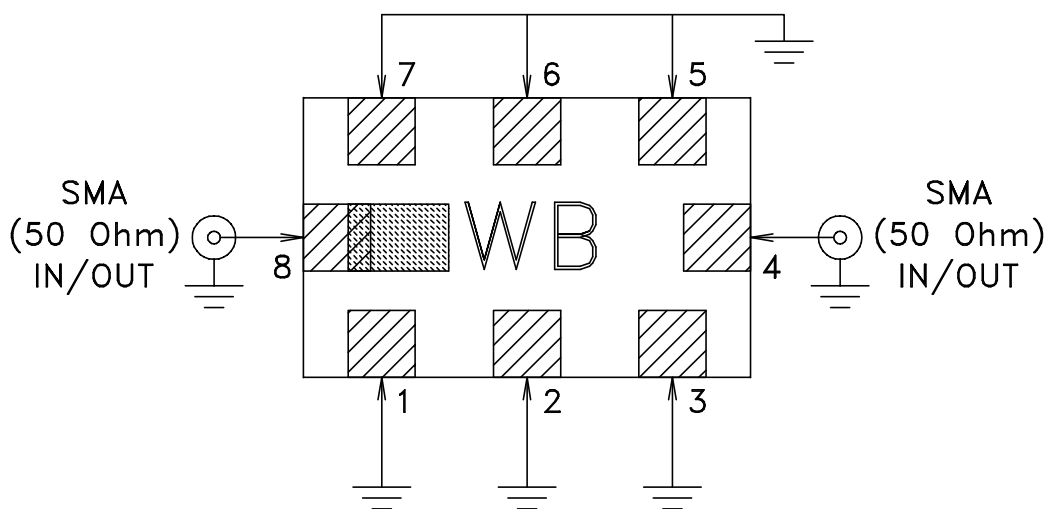
FILE:	SCALE:	SHEET:
98PL429	15:1	1 OF 1

Evaluation Board and Circuit

TB-LFCG-700+




Schematic diagram



Notes:

1. PCB Material: ROGERS (R04350) OR Equivalent, Dielectric Constant=3.5
Dielectric Thickness: .010 inch
2. 50 Ohm SMA Female Connectors.

 **Mini-Circuits®**



All Mini-Circuits products are manufactured under exacting quality assurance and control standards, and are capable of meeting published specifications after being subjected to any or all of the following physical and environmental test.

Specification	Test/Inspection Condition	Reference/Spec
Operating Temperature	-55° to 125° C Ambient Environment	Individual Model Data Sheet
Storage Temperature	-55° to 125° C Ambient Environment	Individual Model Data Sheet
Humidity	90 to 95% RH, 240 hours, 50°C	MIL-STD-202, Method 103, Condition A, Except 50°C and end-point electrical test done within 12 hours
Solder Reflow Heat	Sn-Pb Eutetic Process: 225°C peak Pb-Free Process 245° - 250°C peak	J-STD-020, Table 4-1, 4-2 and 5-2, Figure 5-1
Solderability	10X Magnification	J-STD-002, Test B,B1, 95% Coverage
Thermal Shock	-40° to +125°C, 15 min dwell, 100 cycles	MIL-STD-202, Method 107
Bend Test	1mm, deflection for 5 seconds Span of bending: 2.75"	--
High Temp Storage	125°C to 1000 Hrs	---