



(CERAMIC RESONATOR) SURFACE MOUNT

# Bandpass Filter

## CBP4-A3G+

50Ω

2950 to 3050 MHz

### KEY FEATURES

- Good insertion loss, 1.6 dB Typ.
- Excellent rejection, 70 dB Typ.
- Miniature shielded package

### APPLICATIONS

- Wireless Communication
- Satellite Communication
- Radar systems

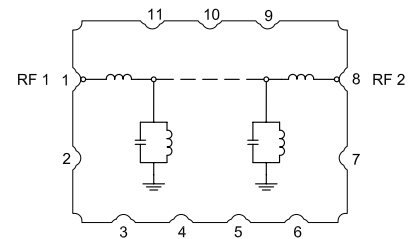


Generic photo used for illustration purposes only

### PRODUCT OVERVIEW

All our coaxial-ceramic resonator filters are built with rugged construction, qualified to withstand multiple demanding reflow cycles. Excellent repeatability across units is achieved through precise tuning and process control.

### FUNCTIONAL DIAGRAM



### ELECTRICAL SPECIFICATIONS<sup>1,2,3</sup> AT +25°C

Parameter	F#	Frequency (MHz)	Min.	Typ.	Max.	Units
Passband	Center Frequency	—	—	3000	—	MHz
Passband	Insertion Loss	F1-F2	—	1.6	2.2	dB
	Return Loss	F1-F2	10	15	—	dB
Stop Band, Lower	Rejection	DC-F3	60	70	—	dB
		F3-F4	20	30	—	dB
Stop Band, Upper	Rejection	F5-F6	20	29	—	dB
		F6-F7	30	40	—	dB

1. Tested in Evaluation Board P/N TB-CBP4-A3G+.

2. This filter is bi-directional RF1 and RF2 ports may be interchanged, see S-Parameters for actual performance.

3. This component should not be used as a DC-block. In applications where DC voltage and/or current is present at either the input or output ports, external DC blocking capacitors are required.

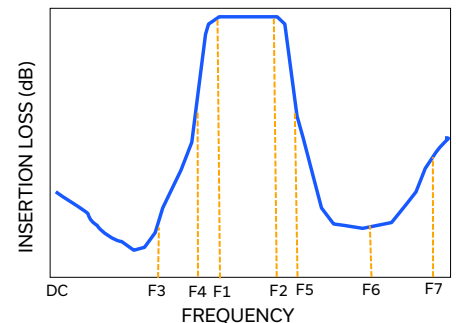
### ABSOLUTE MAXIMUM RATINGS<sup>4</sup>

Parameter	Ratings
Operating Temperature	-40°C to +85°C
Storage Temperature	-55°C to +100°C
Input Power <sup>5</sup>	8 W at 25°C

4. Permanent damage may occur if any of these limits are exceeded.

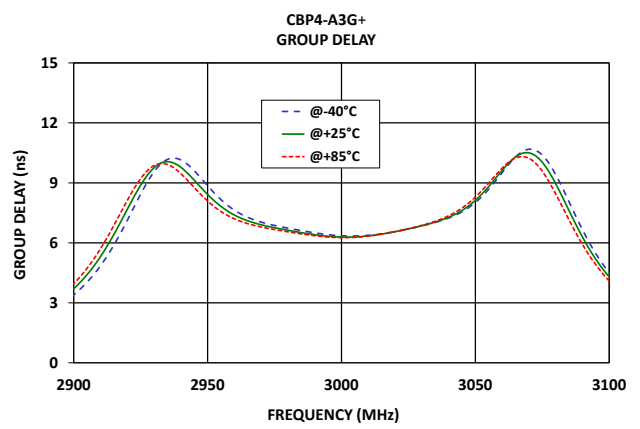
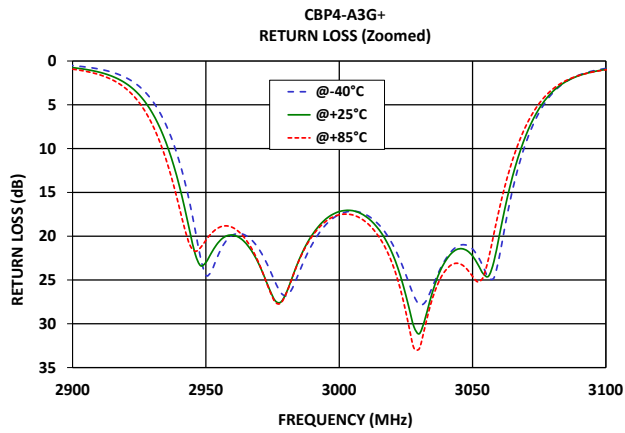
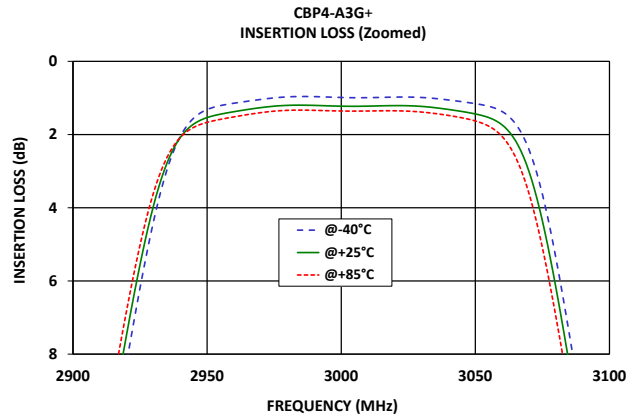
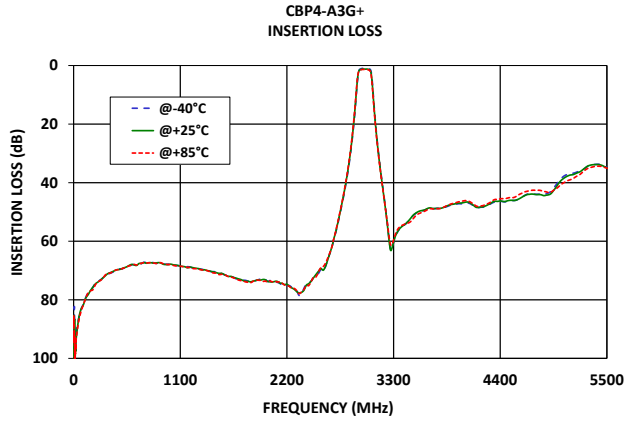
5. Power rating applies only to signals within the passband. Power rating above +25°C operating temperature decreases linearly to 2 W at +85°C.

### TYPICAL FREQUENCY RESPONSE AT +25°C





### TYPICAL PERFORMANCE GRAPHS





### FUNCTIONAL DIAGRAM

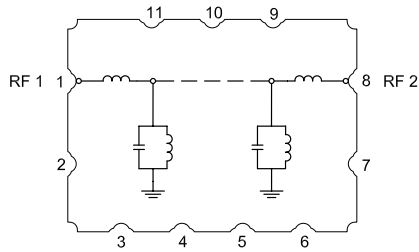
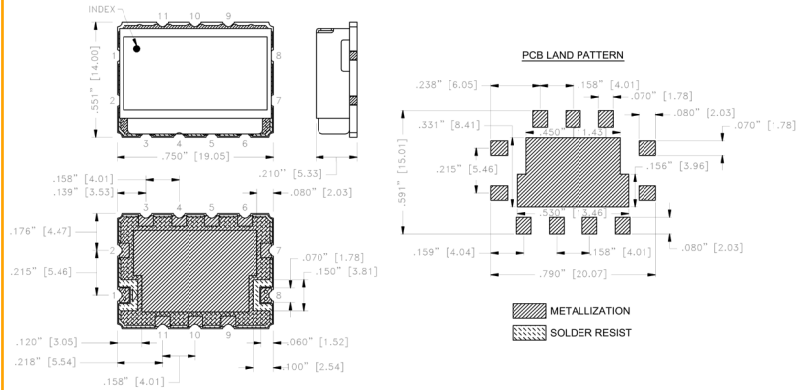


Figure 1. CBP4-A3G+ Functional Diagram

### PAD DESCRIPTION

Function	Pad Number	Description
RF1 <sup>2</sup>	1	Connects to RF Input Port
RF2 <sup>2</sup>	8	Connects to RF Output Port
GROUND	2-7, 9-11	Connects to Ground on PCB, (See drawing PL-654)
NC	-	No connection, not used internally. See drawing PL-654 for connection to PCB

### CASE STYLE DRAWING

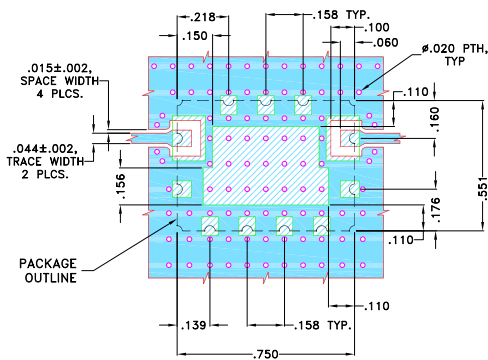


Weight: 4.6 gram

Dimensions are in inches (mm). Tolerances: 2Pl. ± .03; 3Pl. ± .015

### SUGGESTED PCB LAYOUT (PL-654)

#### SUGGESTED MOUNTING CONFIGURATION FOR RZ2511-1 CASE STYLE



NOTES:

- TRACE WIDTH IS SHOWN FOR ROGERS (RO4350B) WITH DIELECTRIC THICKNESS .023"±.002". COPPER: 1/2 OZ. EACH SIDE. FOR OTHER MATERIALS TRACE WIDTH MAY NEED TO BE MODIFIED.
- BOTTOM SIDE OF THE PCB IS CONTINUOUS GROUND PLANE.

- DENOTES PCB COPPER LAYOUT WITH SMOBC (SOLDER MASK OVER BARE COPPER)
- DENOTES COPPER LAND PATTERN FREE OF SOLDERMASK

Figure 2. Suggested PCB Layout PL-654

### PRODUCT MARKING\*: CBP4-A3G

\*Marking may contain other features or characters for internal lot control.



(CERAMIC RESONATOR) SURFACE MOUNT

# Bandpass Filter

## CBP4-A3G+

Mini-Circuits

50Ω

2950 to 3050 MHz

ADDITIONAL DETAILED INFORMATION IS AVAILABLE ON OUR DASHBOARD.

[CLICK HERE](#)

Performance Data and Graphs	Data
	Graphs S-Parameter (S2P Files) Data Set (.zip file) De-embedded to device pads
Case Style	RZ2511-1 Lead Finish: Electroless Nickel Immersion Gold
RoHS Status	Compliant
Tape and Reel	F122
Suggested Layout for PCB Design	PL-654
Evaluation Board	TB-CBP4-A3G+
	Gerber File
Environmental Rating	ENV54

### NOTES

- A. Performance and quality attributes and conditions not expressly stated in this specification document are intended to be excluded and do not form a part of this specification document.
- B. Electrical specifications and performance data contained in this specification document are based on Mini-Circuits' applicable established test performance criteria and measurement instructions.
- C. The parts covered by this specification document are subject to Mini-Circuits' standard limited warranty and terms and conditions (collectively, "Standard Terms"); Purchasers of this part are entitled to the rights and benefits contained therein. For a full statement of the standard terms and the exclusive rights and remedies thereunder, please visit Mini-Circuits' website at [www.minicircuits.com/terms/viewterm.html](http://www.minicircuits.com/terms/viewterm.html)



# Surface Mount Bandpass Filter

# CBP4-A3G+

## Typical Performance Data

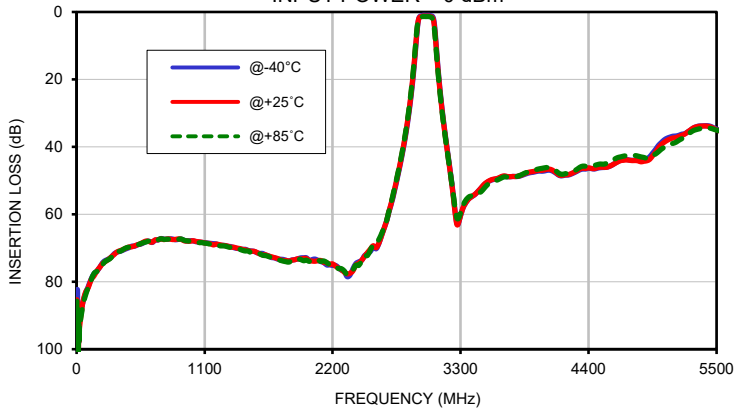
FREQ. (MHz)	INSERTION LOSS			INPUT RETURN LOSS			OUTPUT RETURN LOSS		
	(dB)			(dB)			(dB)		
	@-40°C	@+25°C	@+85°C	@-40°C	@+25°C	@+85°C	@-40°C	@+25°C	@+85°C
1	87.47	89.79	88.71	0.11	0.11	0.10	0.00	0.00	0.00
3	86.07	96.25	85.29	0.11	0.11	0.11	0.00	0.01	0.01
7	82.28	90.25	93.03	0.12	0.11	0.11	0.01	0.02	0.02
10	98.55	105.32	97.69	0.12	0.11	0.11	0.01	0.02	0.02
25	91.36	93.71	93.89	0.11	0.11	0.10	0.03	0.03	0.04
50	86.70	86.80	87.78	0.10	0.09	0.07	0.05	0.05	0.07
75	83.58	83.30	84.17	0.10	0.08	0.06	0.06	0.07	0.08
100	81.44	81.78	81.71	0.08	0.07	0.04	0.07	0.08	0.10
300	72.61	72.58	72.71	0.07	0.04	0.02	0.10	0.12	0.14
500	69.46	69.32	69.36	0.07	0.04	0.02	0.10	0.12	0.15
1000	67.87	67.82	67.97	0.14	0.09	0.06	0.02	0.07	0.10
1200	68.79	68.84	68.99	0.16	0.10	0.07	0.01	0.05	0.08
1500	70.86	70.98	71.40	0.12	0.05	0.01	0.01	0.05	0.09
2000	73.75	73.70	73.94	0.14	0.06	0.04	0.08	0.00	0.02
2500	71.66	71.34	72.19	0.03	0.06	0.10	0.03	0.03	0.07
2600	68.47	68.37	67.31	0.02	0.07	0.11	0.03	0.04	0.08
2700	57.47	57.19	56.98	0.00	0.09	0.14	0.01	0.06	0.10
2800	41.95	41.48	41.10	0.03	0.14	0.20	0.02	0.11	0.16
2850	31.48	30.90	30.38	0.11	0.23	0.30	0.08	0.19	0.26
2900	16.39	15.58	14.86	0.53	0.76	0.93	0.49	0.73	0.93
2950	1.32	1.54	1.67	24.46	22.99	20.46	27.26	25.32	21.83
2960	1.14	1.38	1.52	19.88	19.87	19.01	20.42	20.19	19.13
2980	0.97	1.20	1.34	26.82	26.58	26.63	45.99	34.96	34.05
3000	0.99	1.23	1.36	17.52	17.19	17.56	17.98	17.55	17.98
3010	0.99	1.22	1.36	17.54	17.76	18.39	17.38	17.52	18.15
3020	0.98	1.21	1.35	20.92	22.04	23.21	19.35	19.99	20.73
3030	0.99	1.23	1.39	27.79	31.14	32.86	21.57	21.97	22.25
3040	1.06	1.31	1.48	22.58	22.77	23.86	20.12	20.12	20.83
3050	1.16	1.44	1.63	21.46	22.25	24.58	21.28	22.04	24.81
3074	3.35	4.05	4.76	6.44	5.93	5.27	6.27	5.81	5.15
3100	14.09	14.82	15.48	0.85	0.97	1.00	0.74	0.85	0.88
3116	20.46	21.07	21.59	0.42	0.55	0.60	0.34	0.46	0.49
3140	28.48	28.97	29.36	0.24	0.36	0.41	0.19	0.29	0.33
3146	30.27	30.74	31.10	0.21	0.33	0.38	0.17	0.27	0.31
3200	44.40	44.79	44.89	0.07	0.18	0.23	0.05	0.15	0.18
3300	60.36	60.32	59.57	0.03	0.14	0.19	0.02	0.11	0.16
3400	54.68	54.63	54.39	0.02	0.12	0.18	0.01	0.10	0.16
3500	51.30	51.18	52.39	0.01	0.13	0.19	0.04	0.08	0.15
3800	48.75	48.64	48.59	0.04	0.10	0.19	0.14	0.02	0.12
4000	47.23	46.94	46.36	0.08	0.06	0.13	0.20	0.04	0.07
4100	47.37	47.14	46.78	0.03	0.11	0.20	0.24	0.08	0.04
4200	48.38	48.30	47.95	0.00	0.13	0.23	0.24	0.09	0.03
4300	47.26	47.08	46.67	0.08	0.21	0.34	0.24	0.09	0.07
4350	46.59	46.34	45.71	0.01	0.14	0.24	0.32	0.16	0.02
4400	46.37	46.22	45.52	0.02	0.18	0.32	0.32	0.15	0.00
4450	46.58	46.43	45.47	0.06	0.19	0.30	0.31	0.16	0.02
4500	46.19	46.03	45.08	0.00	0.15	0.27	0.35	0.18	0.04
4550	46.07	46.07	44.95	0.04	0.19	0.32	0.33	0.17	0.02
4600	45.43	45.43	43.96	0.02	0.17	0.28	0.36	0.19	0.06
4650	44.40	44.46	43.17	0.02	0.17	0.29	0.37	0.20	0.06
4700	43.75	43.98	42.75	0.04	0.19	0.31	0.35	0.19	0.05
4800	43.94	44.06	42.58	0.04	0.20	0.31	0.35	0.19	0.06
4900	43.48	44.14	43.38	0.06	0.21	0.32	0.36	0.19	0.07
5000	39.58	40.31	41.45	0.09	0.24	0.34	0.35	0.19	0.08
5100	37.10	37.66	39.24	0.11	0.27	0.37	0.35	0.18	0.07
5200	36.24	36.57	37.60	0.13	0.27	0.37	0.35	0.20	0.07
5300	34.43	34.38	35.19	0.17	0.32	0.42	0.35	0.19	0.07
5400	33.73	33.81	34.39	0.18	0.34	0.43	0.33	0.18	0.09
5450	33.93	34.11	34.50	0.22	0.36	0.45	0.31	0.17	0.08
5500	34.74	34.96	35.04	0.17	0.31	0.41	0.39	0.24	0.16

## Typical Performance Data

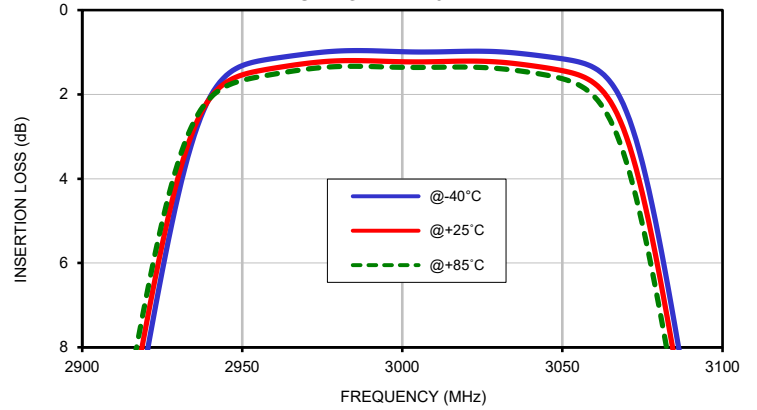
FREQ.  (MHz)	GROUP DELAY		
	(nsec)		
	@-40°C	@+25°C	@+85°C
2950	8.86	8.42	8.09
2952	8.56	8.16	7.86
2954	8.29	7.93	7.66
2956	8.04	7.72	7.48
2958	7.82	7.54	7.33
2960	7.63	7.39	7.20
2962	7.47	7.26	7.09
2964	7.34	7.15	7.00
2966	7.22	7.06	6.92
2968	7.12	6.98	6.85
2970	7.04	6.90	6.79
2972	6.96	6.84	6.74
2974	6.90	6.78	6.69
2976	6.84	6.73	6.64
2978	6.79	6.68	6.60
2980	6.73	6.63	6.55
2982	6.68	6.58	6.51
2986	6.59	6.49	6.43
2988	6.54	6.45	6.39
3000	6.35	6.29	6.26
3010	6.38	6.35	6.34
3016	6.47	6.46	6.46
3020	6.56	6.56	6.56
3024	6.67	6.67	6.68
3030	6.85	6.85	6.87
3036	7.06	7.08	7.13
3040	7.24	7.28	7.35
3046	7.63	7.70	7.83
3050	8.02	8.12	8.29

## Typical Performance Curves

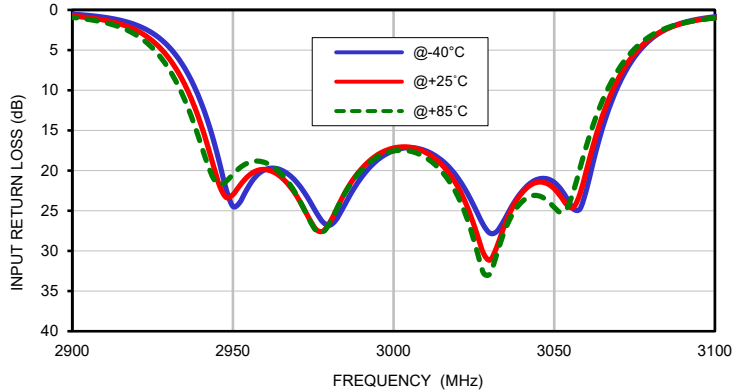
**INSERTION LOSS vs. TEMPERATURE**  
INPUT POWER = 0 dBm



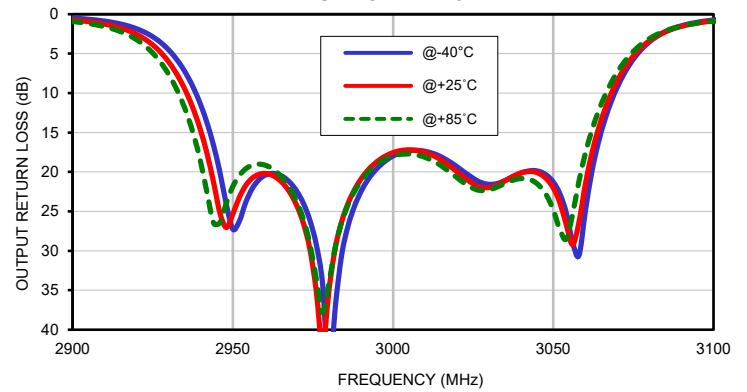
**INSERTION LOSS vs. TEMPERATURE (Zoomed)**  
INPUT POWER = 0 dBm



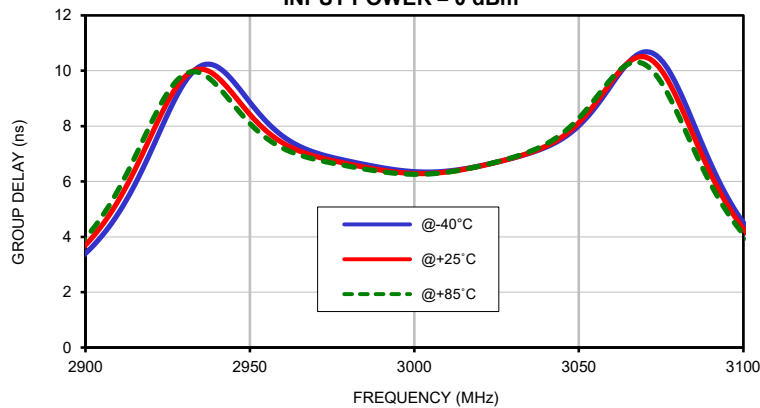
**INPUT RETURN LOSS vs. TEMPERATURE**  
INPUT POWER = 0 dBm



**OUTPUT RETURN LOSS vs. TEMPERATURE**  
INPUT POWER = 0 dBm

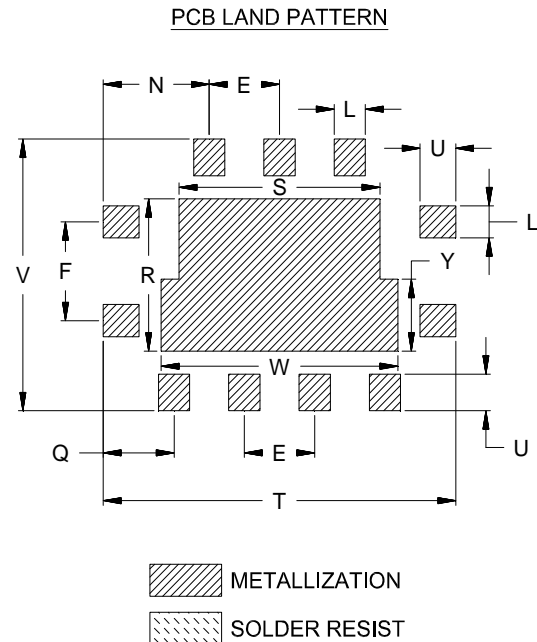
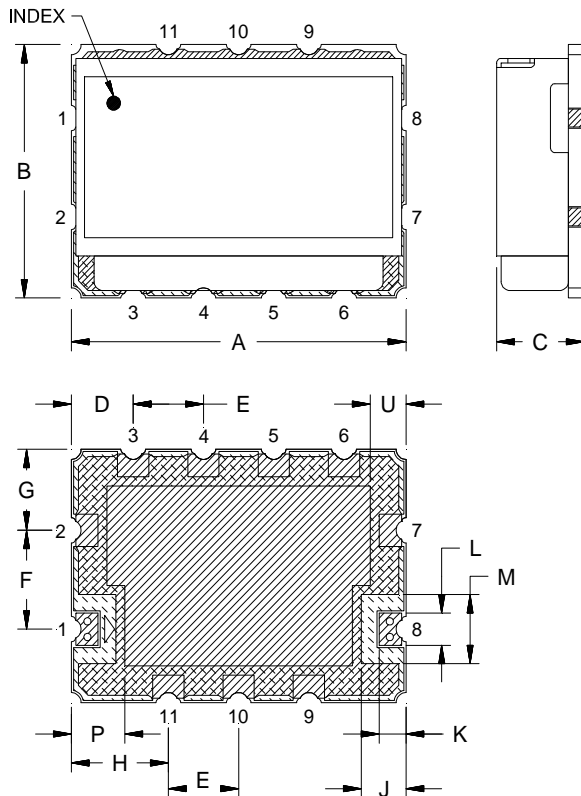


**GROUP DELAY vs. TEMPERATURE**  
INPUT POWER = 0 dBm



## Outline Dimensions

RZ2511-1



CASE#	A	B	C	D	E	F	G	H	J	K	L	M
RZ2511-1	.750 (19.05)	.551 (14.00)	.210 (5.33)	.139 (3.53)	.158 (4.01)	.215 (5.46)	.176 (4.47)	.218 (5.54)	.100 (2.54)	.060 (1.52)	.070 (1.78)	.150 (3.81)

CASE#	N	P	Q	R	S	T	U	V	W	Y	WT.GRAMS
RZ2511-1	.238 (6.05)	.120 (3.05)	.159 (4.04)	.331 (8.41)	.450 (11.43)	.790 (20.07)	.080 (2.03)	.591 (15.01)	.530 (13.46)	.156 (3.96)	4.6

Dimensions are in inches (mm). Tolerances: 2PL. ± .03; 3PL. ± .015

### Notes:

- Case material: Nickel-Silver alloy.
- Base: Printed wiring laminate.
- Termination finish:  
For RoHS Case Styles: 2-5 μ inch (.05-.13 microns) Gold over 120-240 μ inch (3.05-6.10 microns) Nickel plate.  
All models, (+) suffix.

**Mini-Circuits®**  
ISO 9001 ISO 14001 CERTIFIED

ALL NEW  
minicircuits.com

P.O. Box 350166, Brooklyn, New York 11235-0003 (718) 934-4500 Fax (718) 332-4661 For detailed performance specs & shopping online see Mini-Circuits web site

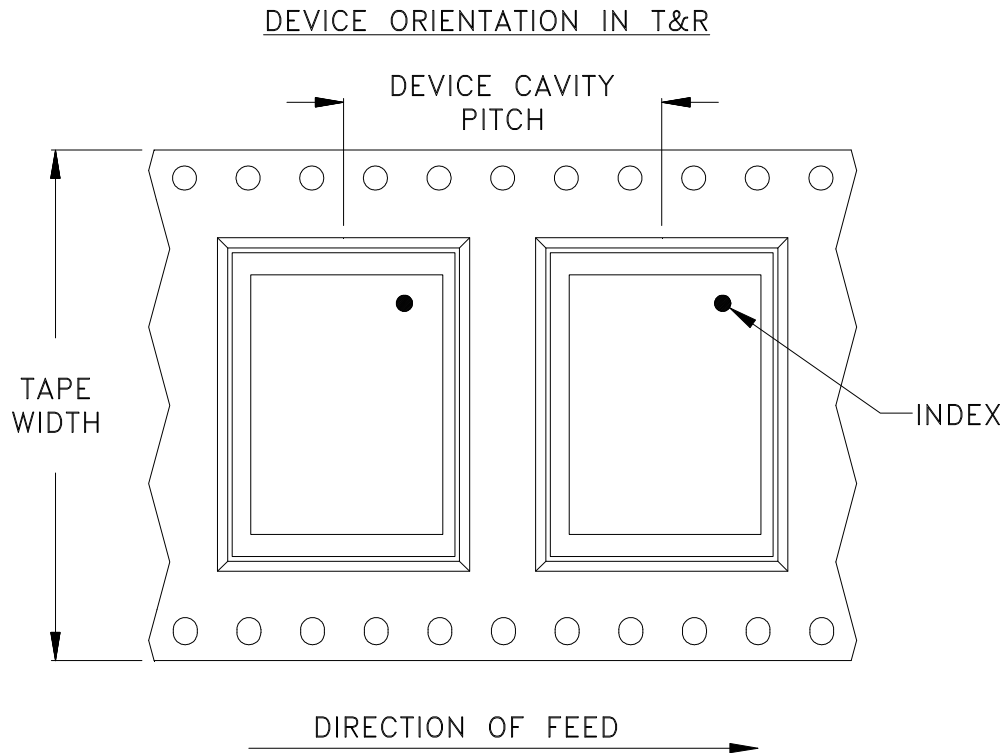


The Design Engineers Search Engine Provides ACTUAL Data Instantly From MINI-CIRCUITS At: [www.minicircuits.com](http://www.minicircuits.com)

RF/IF MICROWAVE COMPONENTS



# Tape & Reel Packaging TR-F122



Tape Width, mm	Device Cavity Pitch, mm	Reel Size, inches	Devices per Reel
32	20	13	500

Mini-Circuits carrier tape materials provide protection from ESD (Electro-Static Discharge) during handling and transportation. Tapes are static dissipative and comply with industry standards EIA-481/EIA-541.

Go to: [www.minicircuits.com/pages/pdfs/tape.pdf](http://www.minicircuits.com/pages/pdfs/tape.pdf)

 **Mini-Circuits**<sup>®</sup>

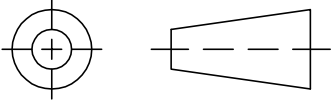
INTERNET <http://www.minicircuits.com>

P.O. Box 350166, Brooklyn, New York 11235-0003 (718) 934-4500 Fax (718) 332-4661

Distribution Centers NORTH AMERICA 800-654-7949 • 417-335-5935 • Fax 417-335-5945 • EUROPE 44-1252-832600 • Fax 44-1252-837010

Mini-Circuits ISO 9001 & ISO 14001 Certified

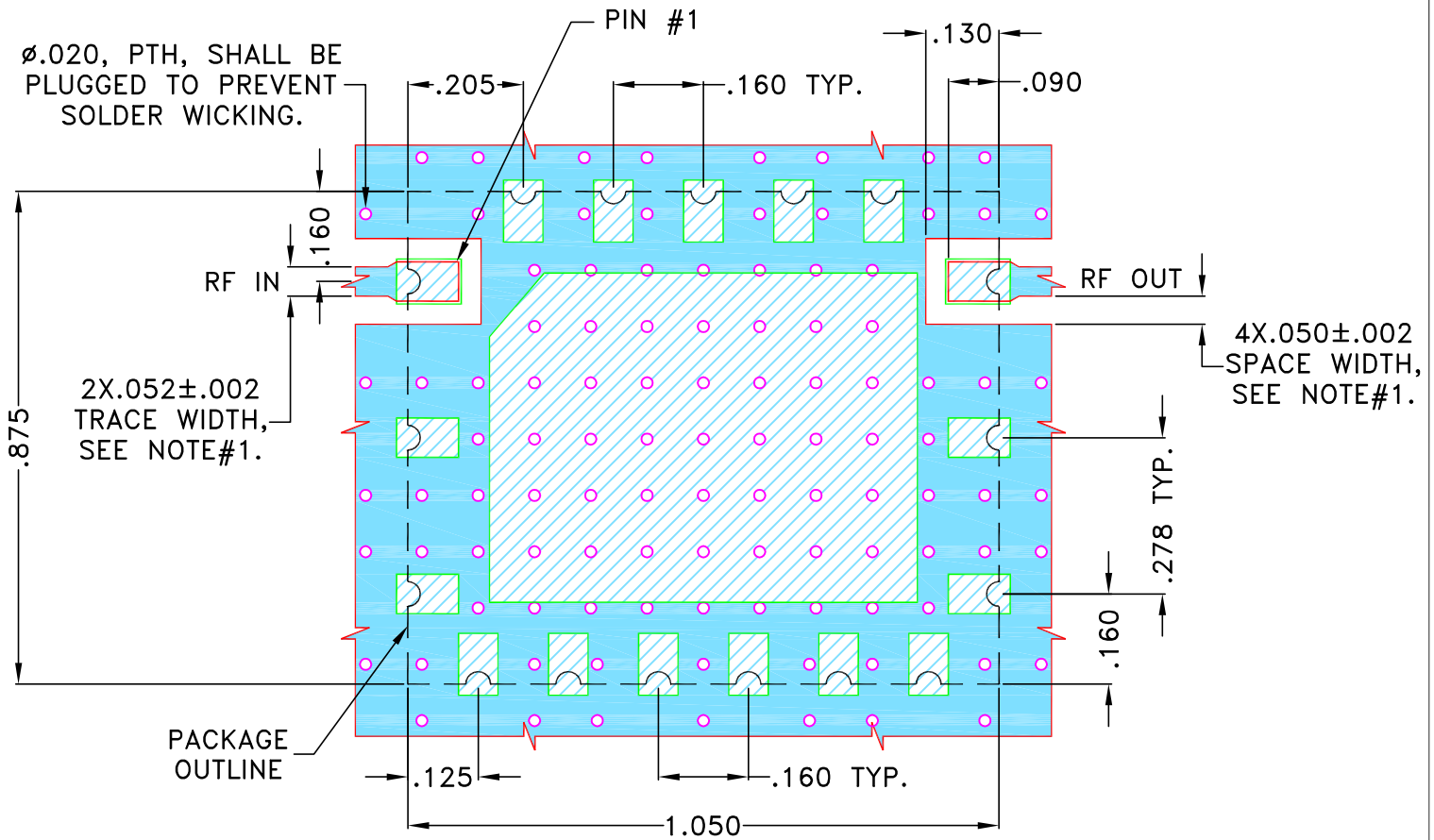
THIRD ANGLE PROJECTION



REVISIONS

REV	ECN No.	DESCRIPTION	DATE	DR	AUTH
OR	M176568	NEW RELEASE	OCT 19	AP	VC

**SUGGESTED MOUNTING CONFIGURATION FOR  
KV1710-3 CASE STYLE**



**NOTES:**

- TRACE WIDTH IS SHOWN FOR ROGERS (R04350B) WITH DIELECTRIC THICKNESS .023"±.002". COPPER: 1/2 OZ. EACH SIDE.  
FOR OTHER MATERIALS TRACE WIDTH MAY NEED TO BE MODIFIED.
- BOTTOM SIDE OF THE PCB IS CONTINUOUS GROUND PLANE.



DENOTES PCB COPPER LAYOUT WITH SMOBC  
(SOLDER MASK OVER BARE COPPER)



DENOTES COPPER LAND PATTERN FREE OF SOLDERMASK

UNLESS OTHERWISE SPECIFIED	INITIALS	DATE
DIMENSIONS ARE IN INCHES	DRAWN AP	23 OCT 19
TOLERANCES ON:	CHECKED MD	23 OCT 19
2 PL DECIMALS ±	APPROVED KKK	23 OCT 19
3 PL DECIMALS ± .005"		
ANGLES ±		
FRACTIONS ±		



**Mini-Circuits®**

13 Neptune Avenue  
Brooklyn NY 11235

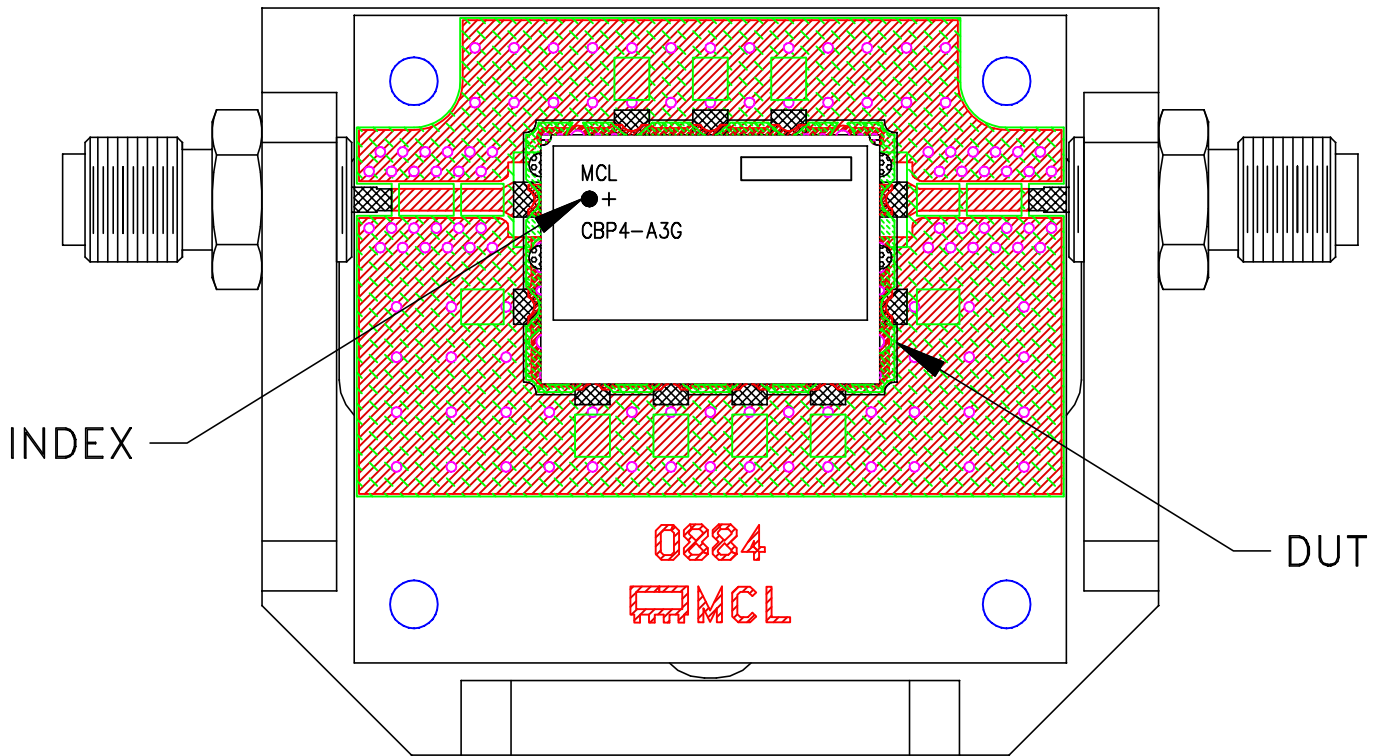
**PL, KV1710-3, TB-1123+,  
50 Ohm**

**Mini-Circuits®**  
THIS DOCUMENT AND ITS CONTENTS ARE THE PROPERTY OF MINI-CIRCUITS. EXCEPT FOR USE EXPRESSLY GRANTED, IN WRITING, TO ITS VENDORS, VENDEE AND THE UNITED STATES GOVERNMENT, MINI-CIRCUITS RESERVES ALL PROPRIETARY DESIGN, USE, MANUFACTURING AND REPRODUCTION RIGHTS THERETO. THESE CONTENTS SHALL NOT BE USED, DUPLICATED OR DISCLOSED TO ANY OUTSIDE PARTY, IN WHOLE OR IN PART, WITHOUT WRITTEN PERMISSION OF MINI-CIRCUITS.

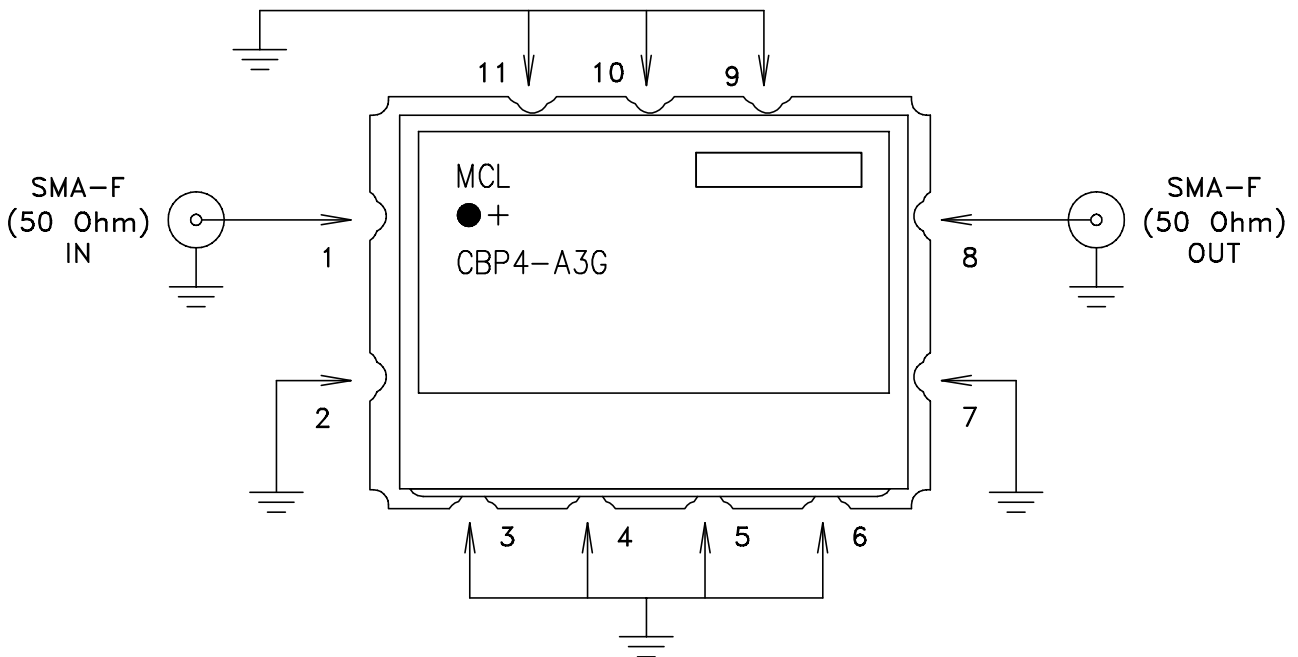
SIZE <b>A</b>	CODE IDENT <b>15542</b>	DRAWING NO: <b>98-PL-654</b>	REV: <b>OR</b>
FILE: <b>98PL654</b>	SCALE: <b>3:1</b>	SHEET: <b>1 OF 1</b>	

# Evaluation Board and Circuit

TB-CBP4-A3G+




Schematic diagram



**Notes:**

1. PCB Material: ROGERS (R04350B) OR Equivalent, Dielectric Constant= $3.48 \pm 0.05$   
Dielectric Thickness:  $.023 \pm .002$
2. 50 Ohm SMA Female Connectors.

 **Mini-Circuits®**

All Mini-Circuits products are manufactured under exacting quality assurance and control standards, and are capable of meeting published specifications after being subjected to any or all of the following physical and environmental test.

Specification	Test/Inspection Condition	Reference/Spec
Operating Temperature	-40° to 85°C Ambient Environment	Individual Model Data Sheet
Storage Temperature	-55° to 100° C Ambient Environment	Individual Model Data Sheet
Humidity	90 to 95% RH, 96 hours, 40°C	MIL-STD-202, Method 103B, Condition B, Except 50°C
Thermal Shock	-55° to 100°C, 100 cycles	MIL-STD-202, Method 107, Condition A-3, except +100°C
Solder Reflow Heat	Sn-Pb Eutectic Process: 225°C peak Pb-Free Process, 245°C peak	J-STD-020, Table 4-1, 4-2 and 5-2, Figure 5-1
Solderability	10X Magnification	J-STD-002, Para 4.2.5, Test S, 95% Coverage
Vibration (High Frequency)	20g peak, 10-2000 Hz, 4 times in each of three axes (total 12)	MIL-STD-202, Method 204, Condition D
Mechanical Shock	50g, 11 ms, 1/2-sine, 18 shocks: 3 each direction, each of 3 axes	MIL-STD-202, Method 213, Condition A