

# Surface Mount Bandpass Filter

## CBP-1120F+

50Ω      1020 to 1220 MHz



Generic photo used for illustration purposes only  
CASE STYLE: KV1710

### The Big Deal

- High Q
- Good selectivity
- Low VSWR, 1.4:1 typical
- Miniature shielded package

### Product Overview

CBP-1120F+ is a coaxial-ceramic-resonator based bandpass filter in a shielded package fabricated using SMT technology. This filter has wider bandwidth and offers low insertion loss with high rejection, low VSWR and high power handling for use in L-band application.

### Key Features

Feature	Advantages
High Q	The CBP-1120F+ filter incorporates High-Q ceramic resonators that enables low insertion loss.
Good selectivity	This filter designed with six pole. So this providing good selectivity in the stopband performance.
Low VSWR	This filter maintains 1.4:1 typical VSWR over a passband frequency range.
Rugged construction	The CBP-1120F+ has been qualified over wide range of thermal, mechanical and environmental conditions including withstanding the stress of extensive solder reflow cycles.

#### Notes

- A. Performance and quality attributes and conditions not expressly stated in this specification document are intended to be excluded and do not form a part of this specification document.  
B. Electrical specifications and performance data contained in this specification document are based on Mini-Circuit's applicable established test performance criteria and measurement instructions.  
C. The parts covered by this specification document are subject to Mini-Circuits standard limited warranty and terms and conditions (collectively, "Standard Terms"); Purchasers of this part are entitled to the rights and benefits contained therein. For a full statement of the Standard Terms and the exclusive rights and remedies thereunder, please visit Mini-Circuits' website at [www.minicircuits.com/MCLStore/terms.jsp](http://www.minicircuits.com/MCLStore/terms.jsp)



# Surface Mount Bandpass Filter

## CBP-1120F+

50Ω 1020 to 1220 MHz



Generic photo used for illustration purposes only  
CASE STYLE: KV1710

### Features

- High Q
- Good selectivity
- Low VSWR
- Miniature shielded package

### Applications

- L-band application
- Aviation/Aeronautical
- Cellular & Distance measurement equipment (DCE)

### Electrical Specifications at 25°C

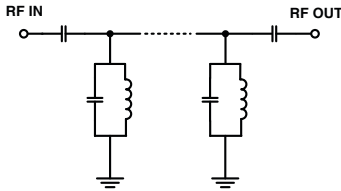
Parameter	F#	Frequency (MHz)	Min.	Typ.	Max.	Unit
Pass Band	Center Frequency	-	-	1120	-	MHz
	Insertion Loss	F1-F2	1020-1220	0.8	1.6	dB
	VSWR	F1-F2	1020-1220	-	1.4	1.8
Stop Band, Lower	Insertion Loss	DC-F3	DC-880	26	36.3	dB
	VSWR	DC-F3	DC-880	-	20	-
Stop Band, Upper	Insertion Loss	F4-F5	1420-2000	28	35.8	dB
	VSWR	F4-F5	1420-2000	-	20	-

### Maximum Ratings

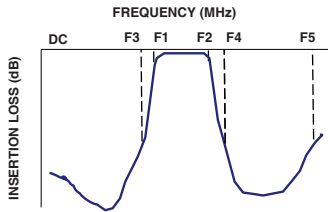
Operating Temperature	-40°C to 85°C
Storage Temperature	-55°C to 100°C
RF Power Input	10 W max.

Permanent damage may occur if any of these limits are exceeded.

### Functional Schematic



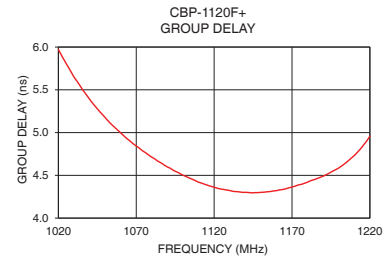
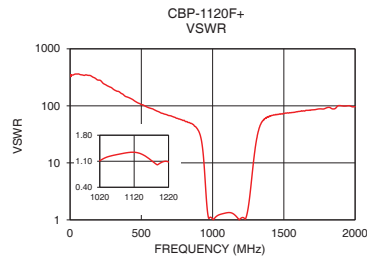
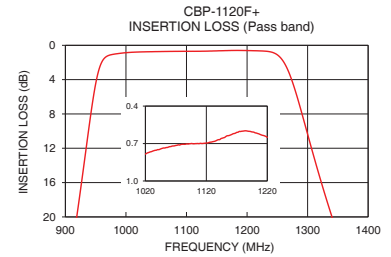
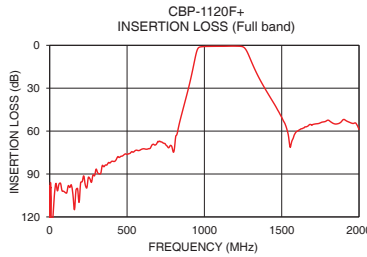
### Typical Frequency Response



### Typical Performance Data at 25°C

Frequency (MHz)	Insertion Loss (dB)	VSWR (:1)	Frequency (MHz)	Group Delay (nsec)
1	120.69	349.30	1020	5.97
100	102.91	341.20	1030	5.65
250	92.32	234.33	1040	5.39
750	69.50	60.42	1050	5.18
880	37.24	43.36	1060	5.00
896	30.52	38.25	1070	4.84
918	20.36	27.42	1080	4.71
952	3.79	3.35	1090	4.60
956	2.70	2.39	1100	4.50
1020	0.78	1.11	1110	4.42
1120	0.70	1.34	1120	4.36
1220	0.65	1.08	1130	4.32
1266	2.67	3.35	1140	4.30
1272	3.69	4.63	1150	4.30
1342	20.38	50.35	1160	4.32
1392	30.30	64.52	1170	4.36
1420	35.36	67.94	1180	4.42
1500	50.46	73.62	1190	4.49
1800	52.35	92.32	1200	4.59
2000	58.85	96.88	1220	4.96

**+RoHS Compliant**  
The +Suffix identifies RoHS Compliance. See our web site for RoHS Compliance methodologies and qualifications



#### Notes

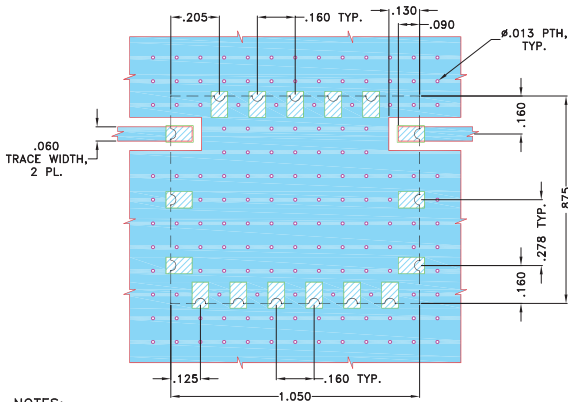
- Performance and quality attributes and conditions not expressly stated in this specification document are intended to be excluded and do not form a part of this specification document.
- Electrical specifications and performance data contained in this specification document are based on Mini-Circuits' applicable established test performance criteria and measurement instructions.
- The parts covered by this specification document are subject to Mini-Circuits standard limited warranty and terms and conditions (collectively, "Standard Terms"); Purchasers of this part are entitled to the rights and benefits contained therein. For a full statement of the Standard Terms and the exclusive rights and remedies thereunder, please visit Mini-Circuits' website at [www.minicircuits.com/MCLStore/terms.jsp](http://www.minicircuits.com/MCLStore/terms.jsp)



## Pad Connections

INPUT	1
OUTPUT	12
GROUND	2,3,4,5,6,7,8,9,10,11,13,14,15,16,17

**Demo Board MCL P/N: TB-693+**  
**Suggested PCB Layout (PL-378)**

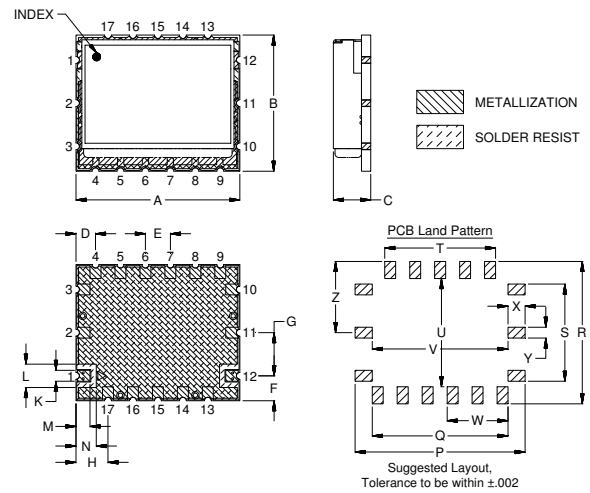


**NOTES:**

- TRACE WIDTH IS SHOWN FOR OAK (OAK-602) WITH DIELECTRIC THICKNESS .022"±.0015". COPPER: 1/2 OZ. EACH SIDE. FOR OTHER MATERIALS TRACE WIDTH MAY NEED TO BE MODIFIED.
- BOTTOM SIDE OF THE PCB IS CONTINUOUS GROUND PLANE.

- DENOTES PCB COPPER LAYOUT WITH SMOBC (SOLDER MASK OVER BARE COPPER)
- DENOTES COPPER LAND PATTERN FREE OF SOLDERMASK

## Outline Drawing



## Outline Dimensions ( inch / mm)

A	B	C	D	E	F	G	H	J	K	L	M	N
1.050	.875	.239	.125	.160	.160	.278	.205	.160	.070	.150	.090	.130
26.67	22.23	6.07	3.18	4.06	4.06	7.06	5.21	4.06	1.78	3.81	2.29	3.30
P	Q	R	S	T	U	V	W	X	Y	Z	Wt.	
1.090	.870	.915	.625	.710	.695	.870	.390	.110	.070	.458	grams	
27.69	22.10	23.24	15.88	18.03	17.65	22.10	9.91	2.79	1.78	11.63	8.5	

*Note: Please refer to case style drawing for details*

**Notes**

- A. Performance and quality attributes and conditions not expressly stated in this specification document are intended to be excluded and do not form a part of this specification document.
- B. Electrical specifications and performance data contained in this specification document are based on Mini-Circuit's applicable established test performance criteria and measurement instructions.
- C. The parts covered by this specification document are subject to Mini-Circuit's standard limited warranty and terms and conditions (collectively, "Standard Terms"); Purchasers of this part are entitled to the rights and benefits contained therein. For a full statement of the Standard Terms and the exclusive rights and remedies thereunder, please visit Mini-Circuit's website at [www.minicircuits.com/MCLStore/terms.jsp](http://www.minicircuits.com/MCLStore/terms.jsp)



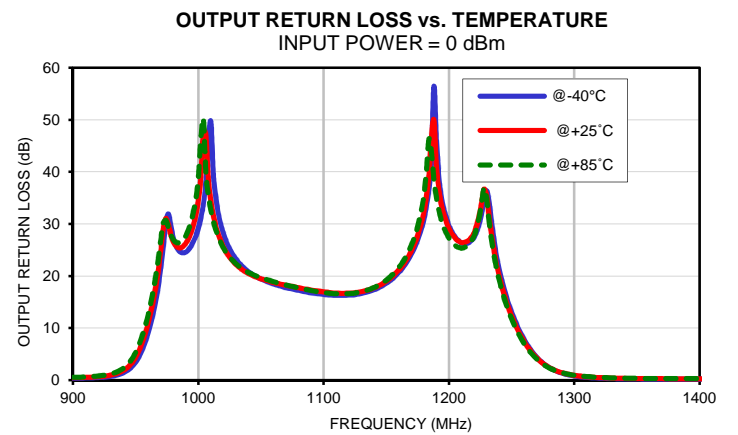
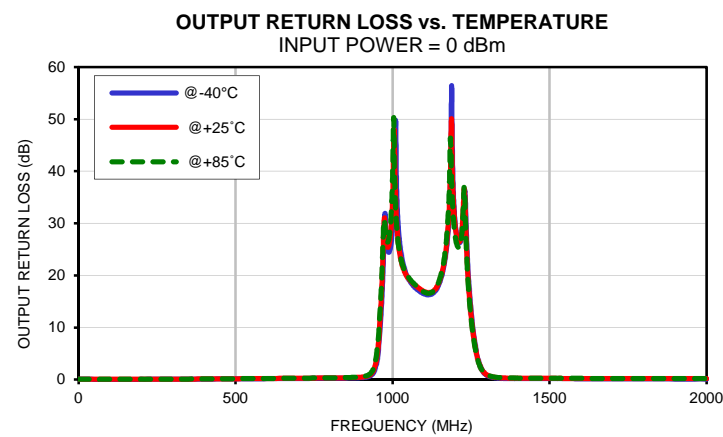
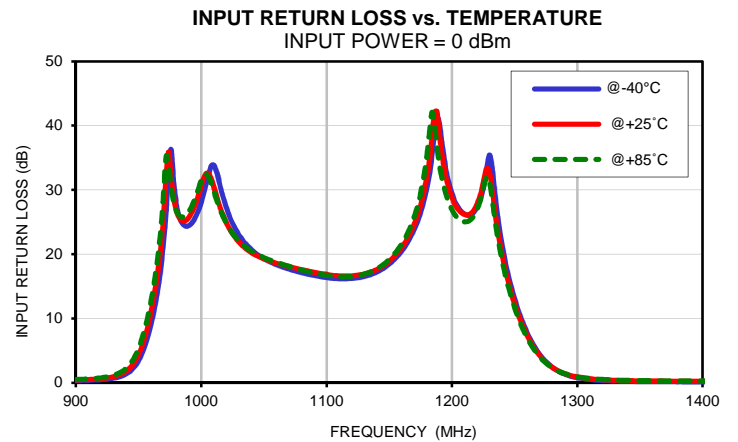
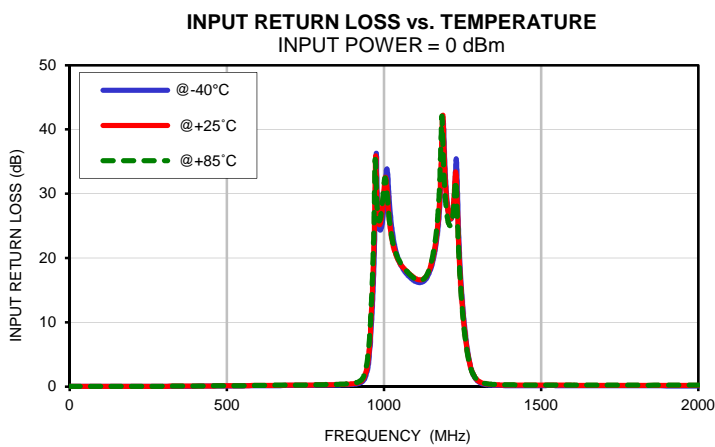
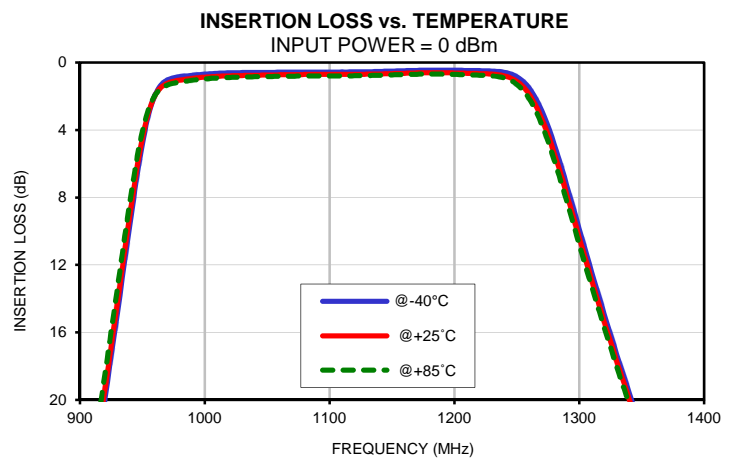
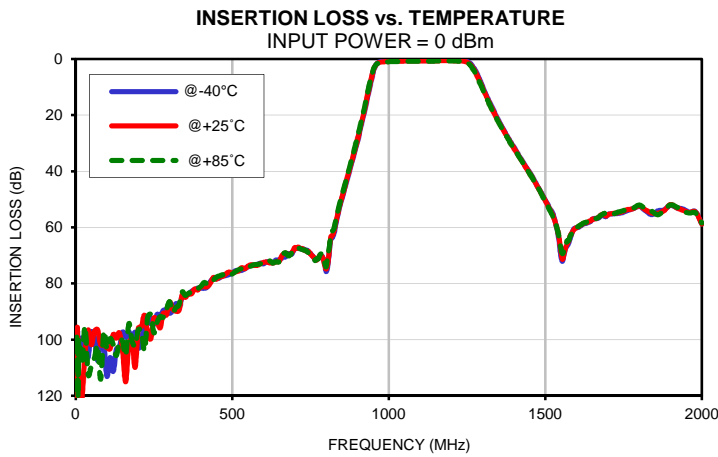
## Typical Performance Data

FREQ.  (MHz)	INSERTION LOSS			INPUT RETURN LOSS			OUTPUT RETURN LOSS		
	(dB)			(dB)			(dB)		
	@-40°C	@+25°C	@+85°C	@-40°C	@+25°C	@+85°C	@-40°C	@+25°C	@+85°C
1	103.32	120.69	104.14	0.05	0.05	0.05	0.05	0.05	0.05
60	99.10	97.08	106.53	0.04	0.04	0.04	0.05	0.05	0.05
100	113.09	102.91	103.36	0.03	0.04	0.04	0.04	0.05	0.05
230	94.49	97.61	91.92	0.03	0.05	0.05	0.05	0.07	0.07
310	89.56	89.13	90.13	0.04	0.07	0.07	0.07	0.09	0.09
440	78.25	77.86	78.80	0.08	0.11	0.11	0.11	0.14	0.14
570	73.47	73.59	73.33	0.12	0.16	0.17	0.16	0.19	0.20
640	71.64	72.27	72.18	0.15	0.20	0.21	0.19	0.23	0.24
715	67.38	67.33	67.49	0.18	0.23	0.24	0.22	0.27	0.28
720	67.72	67.57	67.76	0.18	0.23	0.25	0.22	0.27	0.28
755	69.87	70.12	70.32	0.20	0.25	0.27	0.24	0.29	0.30
775	71.13	70.82	71.18	0.21	0.26	0.28	0.25	0.30	0.32
800	75.74	74.84	74.03	0.22	0.28	0.30	0.26	0.31	0.33
815	64.15	63.48	62.90	0.23	0.29	0.32	0.27	0.33	0.35
820	63.71	62.90	61.32	0.23	0.30	0.32	0.27	0.33	0.35
865	43.85	43.38	42.62	0.26	0.34	0.38	0.30	0.37	0.41
880	37.71	37.24	36.47	0.29	0.37	0.42	0.32	0.40	0.45
890	33.58	33.09	32.30	0.31	0.40	0.46	0.34	0.43	0.49
898	30.15	29.64	28.83	0.33	0.43	0.50	0.36	0.46	0.53
918	20.92	20.36	19.48	0.46	0.60	0.72	0.48	0.63	0.75
920	19.93	19.36	18.49	0.49	0.64	0.76	0.51	0.67	0.79
948	5.68	5.26	4.78	2.83	3.62	4.46	2.87	3.66	4.49
954	3.38	3.19	2.98	5.16	6.41	7.67	5.19	6.45	7.67
956	2.80	2.70	2.56	6.28	7.72	9.13	6.32	7.75	9.11
960	1.94	1.97	1.96	9.16	11.03	12.75	9.18	11.02	12.64
974	0.92	1.12	1.24	33.22	35.91	34.00	30.08	31.04	30.70
986	0.78	0.98	1.09	24.55	25.17	25.81	24.55	25.42	26.52
1000	0.68	0.86	0.97	28.11	30.62	31.44	29.25	34.64	38.84
1002	0.67	0.85	0.96	29.44	31.81	32.25	31.22	39.07	46.48
1004	0.66	0.84	0.95	30.96	32.55	32.46	33.77	48.02	50.08
1016	0.62	0.80	0.89	29.89	26.76	26.49	31.92	27.96	27.47
1020	0.61	0.78	0.88	27.24	24.92	24.84	28.13	25.61	25.43
1054	0.57	0.73	0.82	18.90	18.97	19.14	19.01	19.16	19.36
1090	0.56	0.70	0.79	16.69	17.18	17.08	16.78	17.30	17.21
1120	0.55	0.70	0.78	16.22	16.63	16.54	16.33	16.72	16.62
1170	0.46	0.61	0.69	23.92	24.71	25.84	24.18	24.86	25.92
1184	0.44	0.60	0.68	35.20	38.05	42.05	36.57	39.23	46.28
1188	0.44	0.60	0.68	41.33	42.20	36.81	56.41	49.92	38.53
1190	0.44	0.60	0.69	40.30	38.71	34.01	46.00	41.09	35.01
1206	0.46	0.62	0.71	26.98	26.71	25.36	27.15	26.99	25.68
1220	0.48	0.65	0.75	27.29	27.78	26.98	27.40	28.26	27.67
1228	0.49	0.68	0.78	33.69	33.39	32.04	34.43	36.68	36.90
1234	0.52	0.71	0.82	30.05	27.14	25.86	30.30	27.87	26.88
1246	0.70	0.94	1.09	15.86	14.91	14.23	15.87	14.98	14.34
1272	3.21	3.69	4.06	3.91	3.79	3.62	3.93	3.81	3.65
1338	19.12	19.50	19.79	0.23	0.34	0.38	0.26	0.36	0.40
1340	19.57	19.94	20.23	0.23	0.33	0.37	0.26	0.36	0.39
1342	20.01	20.38	20.66	0.22	0.32	0.37	0.25	0.35	0.38
1388	29.28	29.56	29.73	0.16	0.25	0.28	0.20	0.28	0.31
1392	30.03	30.30	30.47	0.16	0.25	0.28	0.19	0.27	0.29
1420	35.14	35.36	35.50	0.15	0.23	0.26	0.19	0.26	0.28
1480	46.21	46.37	46.44	0.16	0.22	0.25	0.18	0.24	0.26
1505	51.29	51.48	51.65	0.16	0.23	0.25	0.18	0.24	0.25
1535	59.39	59.39	59.31	0.17	0.24	0.26	0.18	0.23	0.25
1555	72.08	71.40	69.35	0.16	0.22	0.25	0.18	0.23	0.25
1580	63.75	63.02	63.06	0.15	0.22	0.24	0.17	0.22	0.24
1685	55.60	55.34	55.16	0.14	0.21	0.23	0.15	0.21	0.22
1780	53.34	53.38	53.19	0.13	0.20	0.22	0.14	0.20	0.22
1900	52.09	51.86	51.98	0.11	0.19	0.22	0.11	0.17	0.20
2000	58.76	58.85	58.42	0.11	0.19	0.22	0.10	0.18	0.22

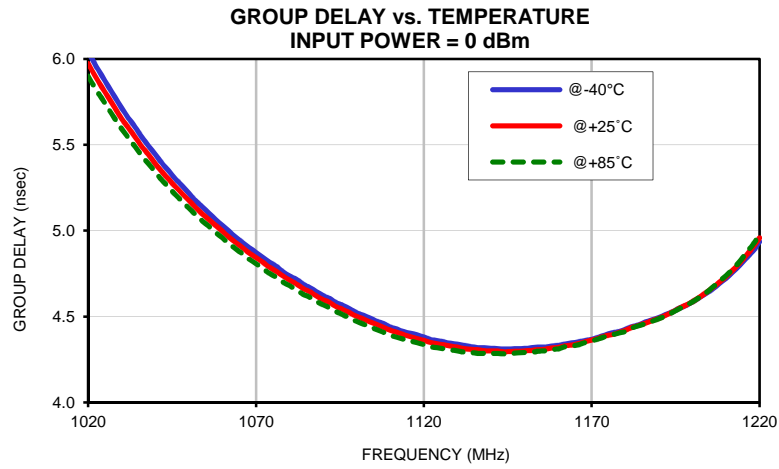
## Typical Performance Data

FREQ.  (MHz)	GROUP DELAY		
	(nsec)		
	@-40°C	@+25°C	@+85°C
1020	6.04	5.97	5.90
1024	5.91	5.84	5.77
1028	5.78	5.71	5.65
1032	5.66	5.60	5.54
1036	5.54	5.49	5.44
1040	5.44	5.39	5.34
1044	5.35	5.30	5.25
1048	5.26	5.22	5.17
1052	5.17	5.14	5.09
1056	5.10	5.06	5.02
1060	5.03	5.00	4.96
1064	4.96	4.93	4.89
1068	4.90	4.87	4.83
1072	4.85	4.82	4.78
1076	4.79	4.76	4.73
1080	4.74	4.71	4.68
1084	4.69	4.66	4.63
1088	4.65	4.62	4.59
1092	4.60	4.58	4.55
1096	4.56	4.54	4.51
1100	4.52	4.50	4.47
1104	4.49	4.47	4.44
1108	4.46	4.44	4.41
1112	4.43	4.41	4.38
1116	4.40	4.38	4.36
1120	4.38	4.36	4.34
1124	4.36	4.34	4.32
1128	4.34	4.33	4.31
1132	4.33	4.31	4.29
1136	4.32	4.31	4.29
1140	4.32	4.30	4.29
1144	4.31	4.30	4.28
1148	4.31	4.30	4.29
1150	4.31	4.30	4.29
1152	4.32	4.30	4.29
1154	4.32	4.31	4.30
1156	4.32	4.31	4.30
1160	4.33	4.32	4.31
1162	4.34	4.33	4.32
1164	4.35	4.33	4.33
1166	4.35	4.34	4.34
1168	4.36	4.35	4.35
1170	4.37	4.36	4.36
1172	4.38	4.37	4.37
1174	4.39	4.39	4.38
1176	4.41	4.39	4.39
1178	4.41	4.41	4.40
1180	4.43	4.42	4.41
1182	4.44	4.44	4.43
1184	4.45	4.45	4.45
1186	4.47	4.46	4.46
1188	4.48	4.48	4.47
1190	4.50	4.49	4.49
1192	4.51	4.51	4.50
1194	4.53	4.53	4.52
1200	4.59	4.59	4.59
1204	4.63	4.64	4.64
1208	4.69	4.70	4.70
1216	4.84	4.86	4.87
1220	4.94	4.96	4.98

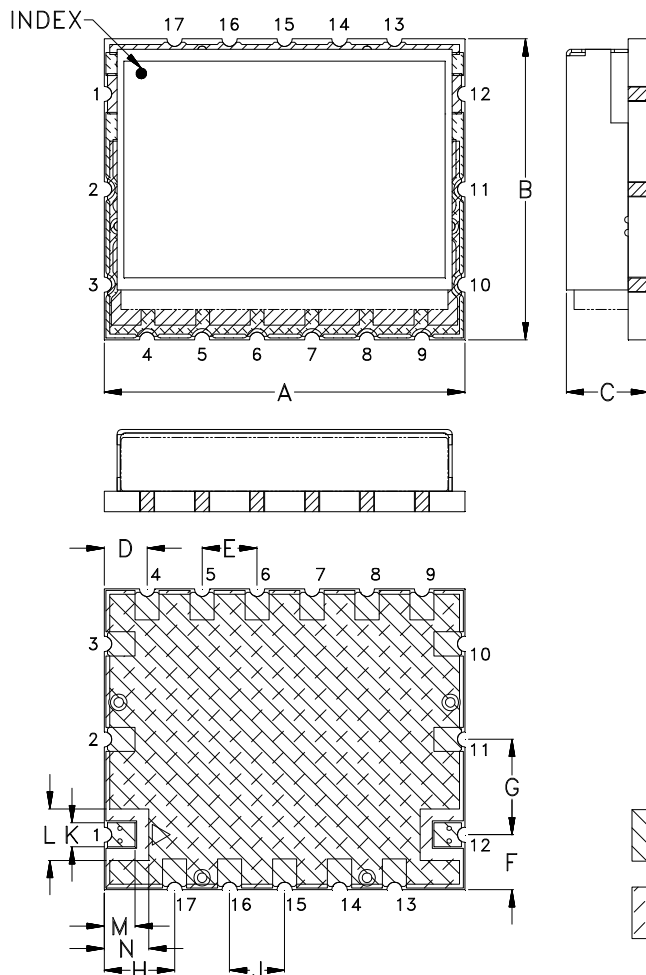
## Typical Performance Curves



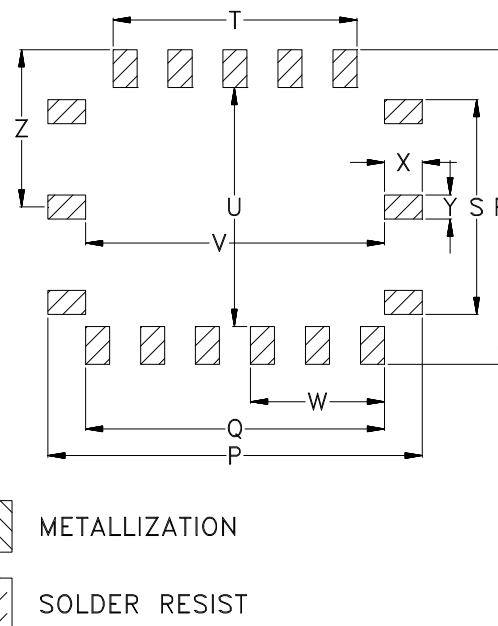
## Typical Performance Curves



### Outline Dimensions



### SUGGESTED PCB LAND PATTERN



CASE#	A	B	C	D	E	F	G	H	J	K	L	M	N
KV1710	1.050 (26.67)	.875 (22.23)	.239 (6.07)	.125 (3.18)	.160 (4.06)	.160 (4.06)	.278 (7.06)	.205 (5.21)	.160 (4.06)	.070 (1.78)	.150 (3.81)	.090 (2.29)	.130 (3.30)

CASE#	P	Q	R	S	T	U	V	W	X	Y	Z	WT, GRAMS
KV1710	1.090 (27.69)	.870 (22.10)	.915 (23.24)	.625 (15.88)	.710 (18.03)	.695 (17.65)	.870 (22.10)	.390 (9.91)	.110 (2.79)	.070 (1.78)	.458 (11.63)	8.5

Dimensions are in inches (mm). Tolerances: 2PL. ± .03; 3PL. ± .015

#### Notes:

- Case material: Nickel-Silver alloy.
- Base: Printed wiring laminate.
- Termination finish:  
For RoHS Case Styles: 2-5 μ inch (.05-.13 microns) Gold over 120-240 μ inch (3.05-6.10 microns) Nickel plate.  
All models, (+) suffix.



P.O. Box 350166, Brooklyn, New York 11235-0003 (718) 934-4500 Fax (718) 332-4661 For detailed performance specs & shopping online see Mini-Circuits web site



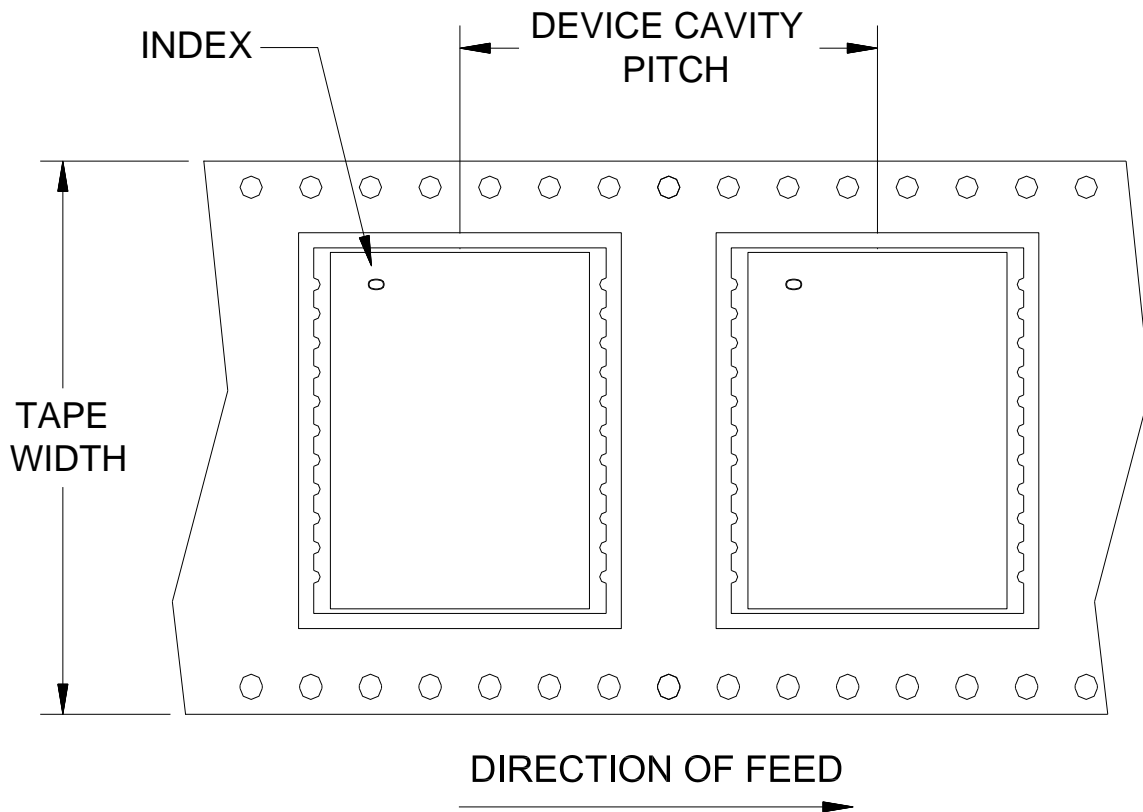
The Design Engineers Search Engine Provides ACTUAL Data Instantly From MINI-CIRCUITS At: [www.minicircuits.com](http://www.minicircuits.com)

RF/IF MICROWAVE COMPONENTS



# Tape & Reel Packaging TR-F97

## DEVICE ORIENTATION IN T&R



Tape Width, mm	Device Cavity Pitch, mm	Reel Size, inches	Devices per Reel	
44	32	13	Small quantity standards (see note)	20
				50
				100
			Standard	200

Note: Please consult individual model data sheet to determine device per reel availability.

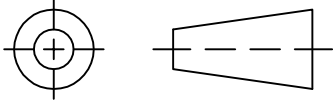
Mini-Circuits carrier tape materials provide protection from ESD (Electro-Static Discharge) during handling and transportation. Tapes are static dissipative and comply with industry standards EIA-481/EIA-541.

Go to: [www.minicircuits.com/pages/pdfs/tape.pdf](http://www.minicircuits.com/pages/pdfs/tape.pdf)



**Mini-Circuits**<sup>®</sup> INTERNET <http://www.minicircuits.com>  
 P.O. Box 350166, Brooklyn, New York 11235-0003 (718) 934-4500 Fax (718) 332-4661  
 Distribution Centers NORTH AMERICA 800-654-7949 • 417-335-5935 • Fax 417-335-5945 • EUROPE 44-1252-832600 • Fax 44-1252-837010  
 Mini-Circuits ISO 9001 & ISO 14001 Certified

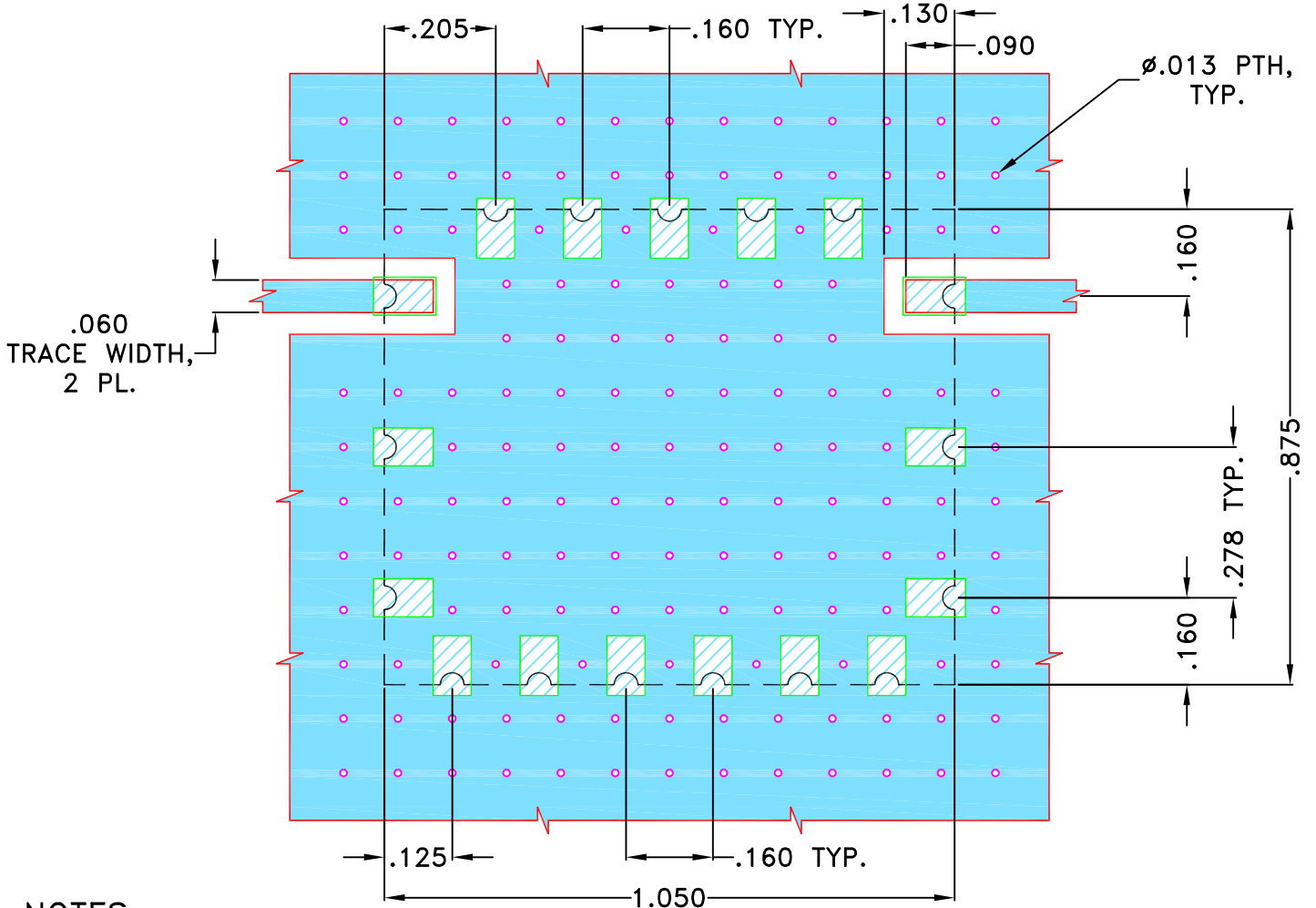
THIRD ANGLE PROJECTION



REVISIONS

REV OR	ECN No.	DESCRIPTION	DATE	DR	AUTH
	M138032	NEW RELEASE	JUL 12	DDR	KG

SUGGESTED MOUNTING CONFIGURATION FOR KV1710 CASE STYLE "17FL01" PIN CODE



NOTES:

- TRACE WIDTH IS SHOWN FOR OAK (OAK-602) WITH DIELECTRIC THICKNESS .022"±.0015". COPPER: 1/2 OZ. EACH SIDE. FOR OTHER MATERIALS TRACE WIDTH MAY NEED TO BE MODIFIED.
- BOTTOM SIDE OF THE PCB IS CONTINUOUS GROUND PLANE.



DENOTES PCB COPPER LAYOUT WITH SMOBC (SOLDER MASK OVER BARE COPPER)



DENOTES COPPER LAND PATTERN FREE OF SOLDERMASK

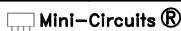
UNLESS OTHERWISE SPECIFIED	INITIALS	DATE
DIMENSIONS ARE IN INCHES	DRAWN DDR	17 JUL 12
TOLERANCES ON:	CHECKED DDR	17 JUL 12
2 PL DECIMALS ±	APPROVED GM	17 JUL 12
3 PL DECIMALS ± .005"		
ANGLES ±		
FRACTIONS ±		



Mini-Circuits®

13 Neptune Avenue  
Brooklyn NY 11235

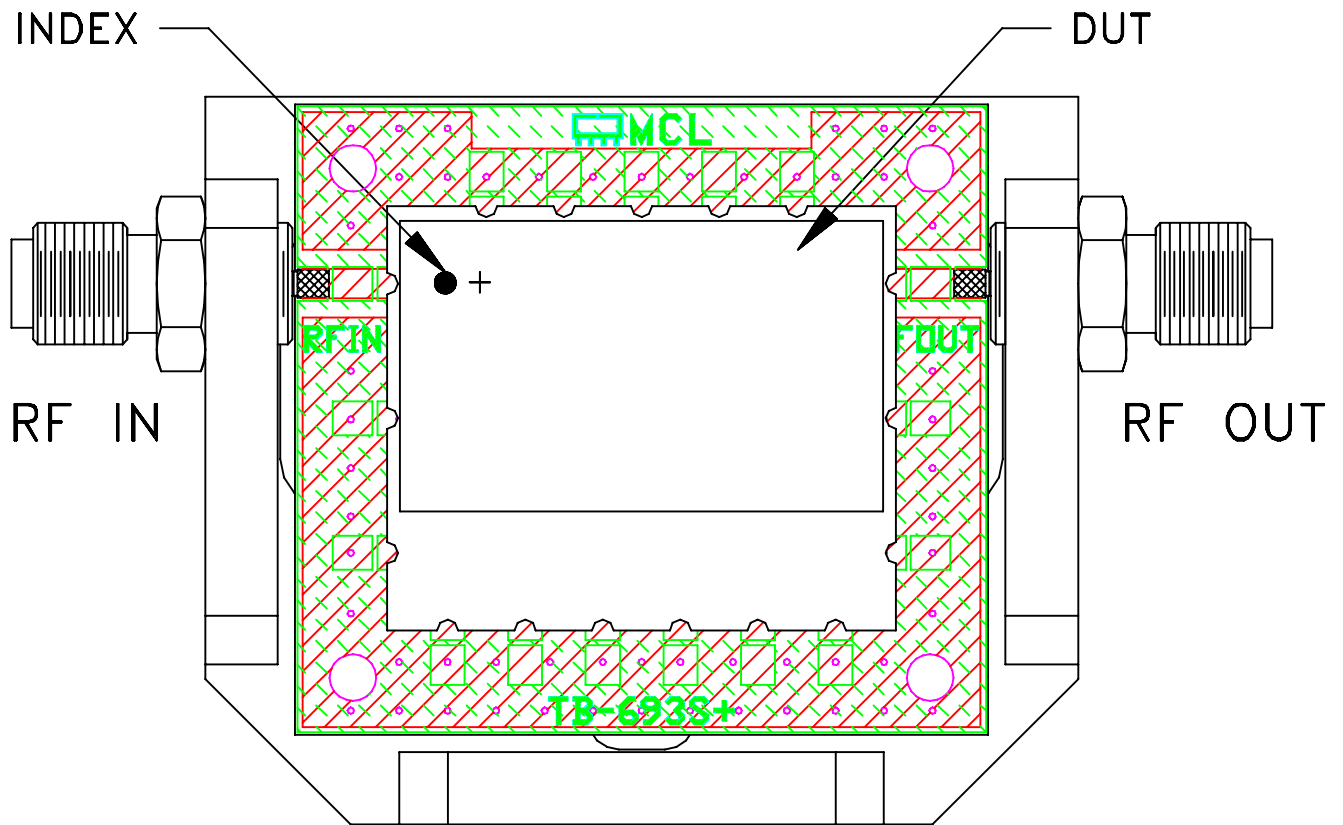
PL, 17FL01, KV1710, CSBP,  
TB-693+, 50 Ohm



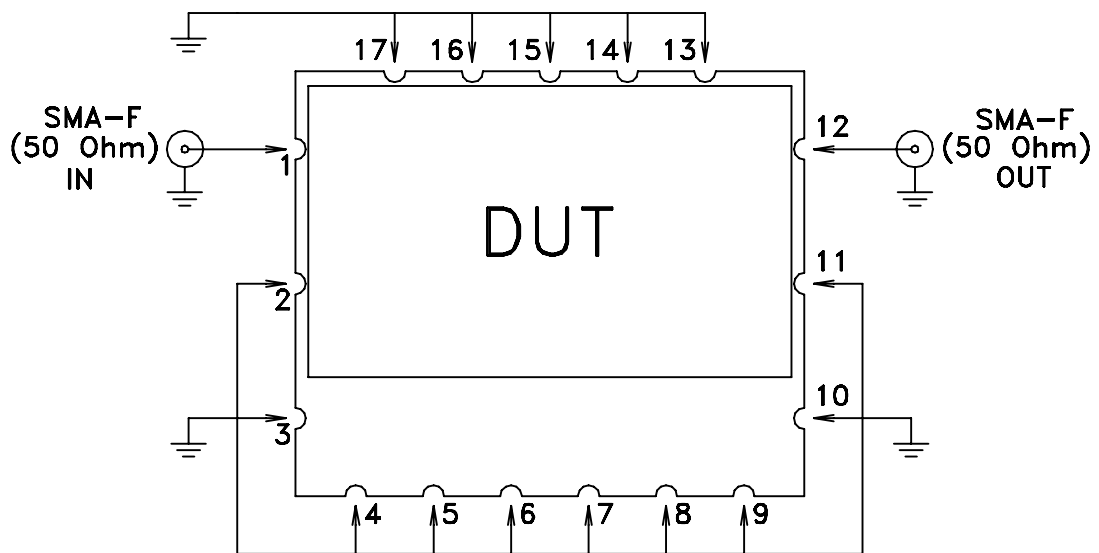
THIS DOCUMENT AND ITS CONTENTS ARE THE PROPERTY OF MINI-CIRCUITS. EXCEPT FOR USE EXPRESSLY GRANTED, IN WRITING, TO ITS VENDORS, VENDEE AND THE UNITED STATES GOVERNMENT, MINI-CIRCUITS RESERVES ALL PROPRIETARY DESIGN, USE, MANUFACTURING AND REPRODUCTION RIGHTS THERETO. THESE CONTENTS SHALL NOT BE USED, DUPLICATED OR DISCLOSED TO ANY OUTSIDE PARTY, IN WHOLE OR IN PART, WITHOUT WRITTEN PERMISSION OF MINI-CIRCUITS.

SIZE	CODE IDENT	DRAWING NO:	REV:
A	15542	98-PL-378	OR
FILE:	98PL378	SCALE:	SHEET:
		3:1	1 OF 1

# Evaluation Board and Circuit




TB-693+



Schematic Diagram

**Notes:**

1. 50 Ohm SMA Female connectors.
2. PCB Material: OAK-602 OR Equivalent  
Dielectric Constant= $2.50 \pm .04$ , Thickness=.022 inch.

 Mini-Circuits®

All Mini-Circuits products are manufactured under exacting quality assurance and control standards, and are capable of meeting published specifications after being subjected to any or all of the following physical and environmental test.

Specification	Test/Inspection Condition	Reference/Spec
Operating Temperature	-40° to 85°C Ambient Environment	Individual Model Data Sheet
Storage Temperature	-55° to 100° C Ambient Environment	Individual Model Data Sheet
Humidity	90 to 95% RH, 96 hours, 40°C	MIL-STD-202, Method 103B, Condition B, Except 50°C
Thermal Shock	-55° to 100°C, 100 cycles	MIL-STD-202, Method 107, Condition A-3, except +100°C
Solder Reflow Heat	Sn-Pb Eutectic Process: 225°C peak Pb-Free Process, 245°C peak	J-STD-020, Table 4-1, 4-2 and 5-2, Figure 5-1
Solderability	10X Magnification	J-STD-002, Para 4.2.5, Test S, 95% Coverage
Vibration (High Frequency)	20g peak, 10-2000 Hz, 4 times in each of three axes (total 12)	MIL-STD-202, Method 204, Condition D
Mechanical Shock	50g, 11 ms, 1/2-sine, 18 shocks: 3 each direction, each of 3 axes	MIL-STD-202, Method 213, Condition A