

Coaxial

# Precision Fixed Attenuator

**BW-KM-2W44+ Series**

50Ω 2W 3,6,10,20 dB DC to 40 GHz

## The Big Deal

- Extremely wideband, DC to 40 GHz
- 2.92 mm Male connectors
- Outstanding attenuation flatness
- Excellent VSWR, 1.10:1 typ.



CASE STYLE: FF2607

## Product Overview

The BW-KMx-2W44+ series of precision fixed attenuators achieves extremely wide frequency range with excellent flatness of attenuation. Available in a variety of attention values for different requirements, these units support a broad range of system and testing applications. Precise performance, excellent VSWR (1.10:1 typ.) and rugged construction make these models ideal solutions for systems requiring precise attenuation across very wide frequency range.

## Key Features

Feature	Advantages
Extremely wideband, DC to 40 GHz	Ideal for an exceptionally wide variety of applications.
Excellent VSWR, 1.10:1 typ.	Efficient power utilization with low power reflected back to source.
Outstanding attenuation flatness	Provides precise, consistent attenuation across the entire frequency band, ideal for broadband and multi-band usage.
Passivated stainless steel connectors	Rugged construction withstands harsh environmental conditions for high reliability and long life of use.

### Notes

- A. Performance and quality attributes and conditions not expressly stated in this specification document are intended to be excluded and do not form a part of this specification document.  
B. Electrical specifications and performance data contained in this specification document are based on Mini-Circuit's applicable established test performance criteria and measurement instructions.  
C. The parts covered by this specification document are subject to Mini-Circuits standard limited warranty and terms and conditions (collectively, "Standard Terms"); Purchasers of this part are entitled to the rights and benefits contained therein. For a full statement of the Standard Terms and the exclusive rights and remedies thereunder, please visit Mini-Circuits' website at [www.minicircuits.com/MCLStore/terms.jsp](http://www.minicircuits.com/MCLStore/terms.jsp)



# Coaxial Precision Fixed Attenuator

## BW-KM10-2W44+

50Ω 2W 10dB DC to 40 GHz

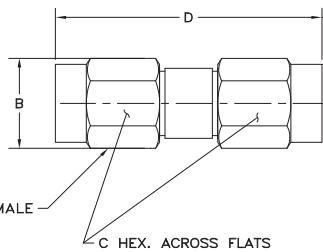
### Maximum Ratings

Operating Temperature -55°C to 100°C\*\*

Storage Temperature -55°C to 100°C

\*\*with mated connectors. Unmated, 85°C max.  
Permanent damage may occur if any of these limits are exceeded.

### Outline Drawing



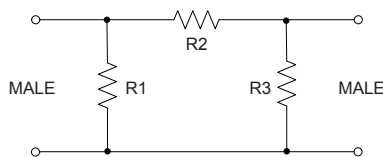
2X 2.92 MM MALE

C HEX. ACROSS FLATS

### Outline Dimensions (inch/mm)

A	B	C	D	E	wt
--	.36	.312	.91	--	grams
--	9.14	7.92	23.11	--	6.5 Max.

### Simplified Electrical Schematic



### Features

- DC to 40 GHz
- precise attenuation
- excellent VSWR, 1.10:1 typ.
- passivated stainless steel connectors
- can interface with SMA, K & 3.5mm connectors

### Applications

- matching
- instrumentation
- test set-ups



Generic photo used for illustration purposes only

CASE STYLE: FF2607

Connectors	Model
2.92mm Male	BW-KM10-2W44+

### +RoHS Compliant

The +Suffix identifies RoHS Compliance. See our web site for RoHS Compliance methodologies and qualifications

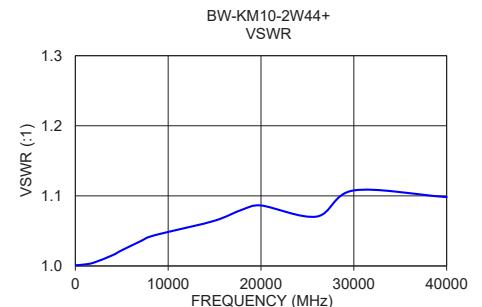
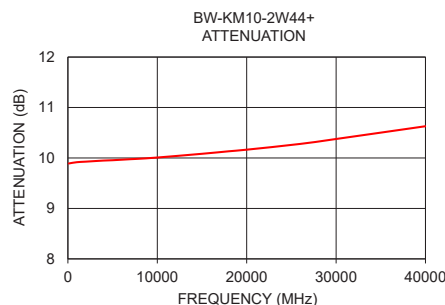
### Electrical Specifications at 25°C

Parameter	Condition (GHz)	Min.	Typ.	Max.	Unit
<b>Frequency Range</b>		DC	—	40	GHz
<b>Attenuation<sup>1</sup></b>	DC - 40	—	10	—	dB
	DC - 26.5	9	—	11	
	26.5 - 40	8	—	12	
<b>VSWR</b>	DC - 18	—	1.0	1.4	:1
	18 - 26.5	—	1.1	1.5	
	26.5 - 40	—	1.1	1.5	
<b>Input Power<sup>2</sup></b>	DC - 40	—	—	2	W

1. At 25°C, accuracy includes frequency and power variations. Temperature coefficient for attenuation: .0004dB/dB/°C typ.  
2. Max. power at 25°C ambient, derate linearly to 0.65W at 100°C.

### Typical Performance Data

Frequency (MHz)	Attenuation (dB)	VSWR (:1)
100	9.89	1.00
1000	9.92	1.00
2000	9.93	1.00
4000	9.95	1.02
5000	9.96	1.02
7000	9.98	1.04
8000	9.98	1.04
10000	10.01	1.05
15000	10.08	1.06
18000	10.13	1.08
20000	10.16	1.09
26000	10.28	1.07
30000	10.38	1.11
40000	10.63	1.10



### Notes

- A. Performance and quality attributes and conditions not expressly stated in this specification document are intended to be excluded and do not form a part of this specification document.  
B. Electrical specifications and performance data contained in this specification document are based on Mini-Circuit's applicable established test performance criteria and measurement instructions.  
C. The parts covered by this specification document are subject to Mini-Circuit's standard limited warranty and terms and conditions (collectively, "Standard Terms"); Purchasers of this part are entitled to the rights and benefits contained therein. For a full statement of the Standard Terms and the exclusive rights and remedies thereunder, please visit Mini-Circuit's website at [www.minicircuits.com/WCLStore/terms.jsp](http://www.minicircuits.com/WCLStore/terms.jsp)



[www.minicircuits.com](http://www.minicircuits.com) P.O. Box 350166, Brooklyn, NY 11235-0003 (718) 934-4500 sales@minicircuits.com

REV. OR  
M168702  
BW-KM10-2W44+  
WP/CP/AM  
200526  
Page 2 of 2

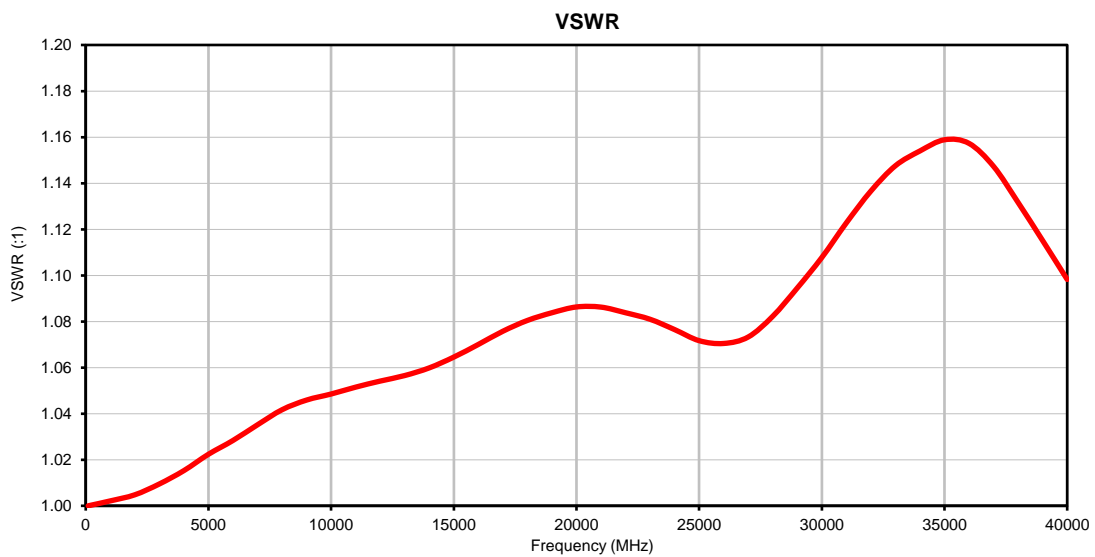
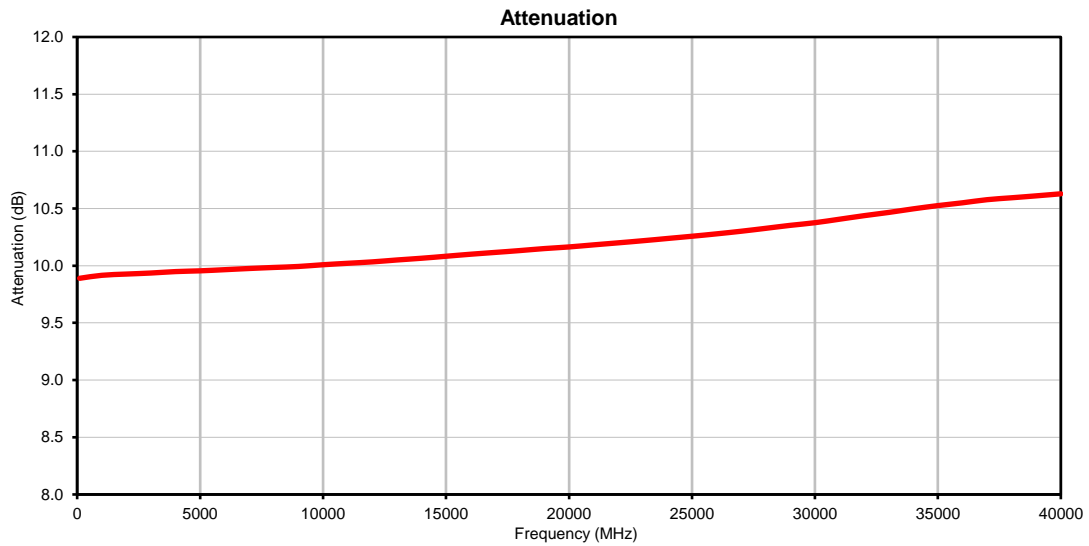
# Fixed Attenuator

# BW-KM10-2W44+

## Typical Performance Data

FREQUENCY (MHz)	ATTENUATION (dB)	VSWR (:1)
100	9.89	1.00
1000	9.92	1.00
2000	9.93	1.00
3000	9.94	1.01
4000	9.95	1.02
5000	9.96	1.02
6000	9.97	1.03
7000	9.98	1.04
8000	9.98	1.04
9000	9.99	1.05
10000	10.01	1.05
11000	10.02	1.05
12000	10.03	1.05
13000	10.05	1.06
14000	10.07	1.06
15000	10.08	1.06
16000	10.10	1.07
17000	10.12	1.08
18000	10.13	1.08
19000	10.15	1.08
20000	10.16	1.09
21000	10.18	1.09
22000	10.20	1.08
23000	10.22	1.08
24000	10.24	1.08
25000	10.26	1.07
26000	10.28	1.07
27000	10.30	1.07
28000	10.33	1.08
29000	10.35	1.09
30000	10.38	1.11
31000	10.41	1.12
32000	10.44	1.14
33000	10.47	1.15
34000	10.50	1.15
35000	10.53	1.16
36000	10.55	1.16
37000	10.58	1.15
38000	10.59	1.13
39000	10.61	1.12
40000	10.63	1.10

## Typical Performance Curves

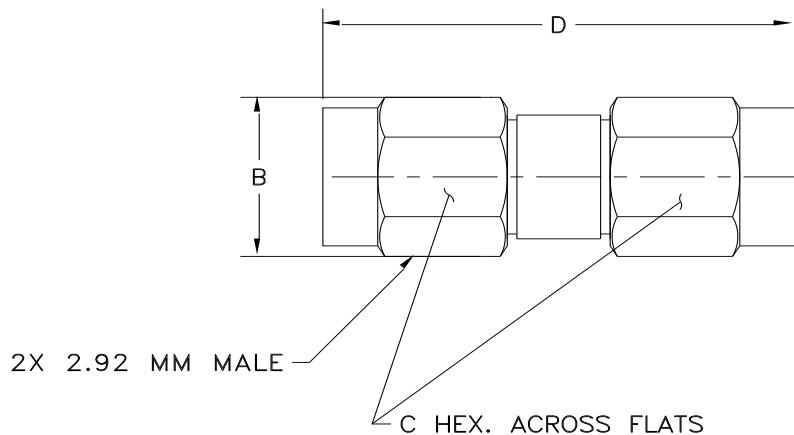


# Case Style

# FF

## Outline Dimensions

### FF2607



CASE #.	A	B	C	D	E	WT GRAMS
FF2607	--	.36 (9.14)	.312 (7.92)	.91 (23.1)	--	6.5 MAX

**Dimensions are in inches (mm). Tolerances: 2Pl.  $\pm$  .03; 3Pl.  $\pm$  .015**

### Notes:

1. Case material: Passivated Stainless steel.

 **Mini-Circuits**<sup>®</sup>  
ISO 9001 ISO 14001 CERTIFIED

ALL NEW  
  


P.O. Box 350166, Brooklyn, New York 11235-0003 (718) 934-4500 Fax (718) 332-4661 For detailed performance specs & shopping online see Mini-Circuits web site

The Design Engineers Search Engine Provides ACTUAL Data Instantly From MINI-CIRCUITS At: [www.minicircuits.com](http://www.minicircuits.com)



RF/IF MICROWAVE COMPONENTS



All Mini-Circuits products are manufactured under exacting quality assurance and control standards, and are capable of meeting published specifications after being subjected to any or all of the following physical and environmental test.

Specification	Test/Inspection Condition	Reference/Spec
Operating Temperature	-55° to 100° C Ambient Environment	Individual Model Data Sheet
Storage Temperature	-55° to 100° C Ambient Environment	Individual Model Data Sheet
Barometric Pressure	100,000 Feet	MIL-STD-202, Method 105, Condition D
Thermal Shock	-55° to 125°C, 5 cycles	MIL-STD-202, Method107, Condition B