

# Surface Mount Frequency Mixer

Level 13 (LO Power +13 dBm) 5 to 4200 MHz

## ADE-42MH+



Generic photo used for illustration purposes only  
CASE STYLE: CD542

**+RoHS Compliant**  
The +Suffix identifies RoHS Compliance. See our web site for RoHS Compliance methodologies and qualifications

Available Tape and Reel at no extra cost

Reel Size	Devices/Reel
7"	20, 50, 100, 200
13"	500, 1000

### Maximum Ratings

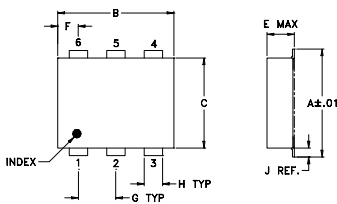
Operating Temperature	-40°C to 85°C
Storage Temperature	-55°C to 100°C
RF Power	200mW
IF Current	40mA

Permanent damage may occur if any of these limits are exceeded.

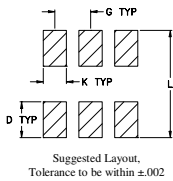
### Pin Connections

LO	6
RF	3
IF	2
GROUND	1,4,5

### Outline Drawing



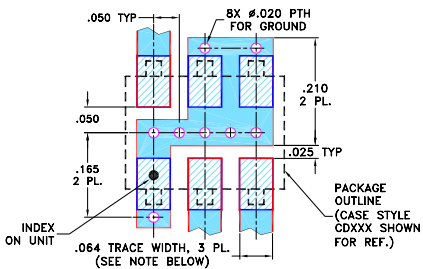
#### PCB Land Pattern



### Outline Dimensions (inch/mm)

A	B	C	D	E	F	G
.272	.310	.220	.100	.112	.055	.100
6.91	7.87	5.59	2.54	2.84	1.40	2.54
H	J	K	L		wt	
.030	.026	.065	.300		grams	
0.76	0.66	1.65	7.62		0.20	

### Demo Board MCL P/N: TB-03 Suggested PCB Layout (PL-052)



- NOTES: 1. TRACE WIDTH IS SHOWN FOR ROGERS RO4350B WITH DIELECTRIC THICKNESS .050" ± .002", COPPER: 1/2 OZ. EACH SIDE. FOR OTHER MATERIALS TRACE WIDTH MAY NEED TO BE MODIFIED.  
2. BOTTOM SIDE OF THE PCB IS CONTINUOUS GROUND PLANE.

- DENOTES PCB COPPER LAYOUT WITH SMOBC (SOLDER MASK OVER BARE COPPER)
- DENOTES COPPER LAND PATTERN FREE OF SOLDER MASK

### Notes

- A. Performance and quality attributes and conditions not expressly stated in this specification document are intended to be excluded and do not form a part of this specification document.  
B. Electrical specifications and performance data contained in this specification document are based on Mini-Circuit's applicable established test performance criteria and measurement instructions.  
C. The parts covered by this specification document are subject to Mini-Circuits standard limited warranty and terms and conditions (collectively, "Standard Terms"); Purchasers of this part are entitled to the rights and benefits contained therein. For a full statement of the Standard Terms and the exclusive rights and remedies thereunder, please visit Mini-Circuits' website at [www.minicircuits.com/MCLStore/terms.jsp](http://www.minicircuits.com/MCLStore/terms.jsp)

### Features

- low conversion loss, 7.5 dB typ.
- low profile package
- aqueous washable
- protected by U.S. Patent 6,133,525

### Applications

- cellular
- PCS
- instrumentation
- satellite communication

### Electrical Specifications

FREQUENCY (MHz)		CONVERSION LOSS (dB)				LO-RF ISOLATION (dB)			LO-IF ISOLATION (dB)			IP3 at center band (dBm)						
LO/RF	IF	Mid-Band		Total	L	M	U	L	M	U								
$f_L$ - $f_U$		$\bar{X}$	$\sigma$	Max.	Max.	Typ. Min.	Typ. Min.	Typ. Min.	Typ. Min.	Typ. Min.	Typ. Min.	Typ.						
5-4200	5-3500	7.5	0.20	9.8	11.8	47	28	29	20	30	15	34	23	26	17	23	17	17

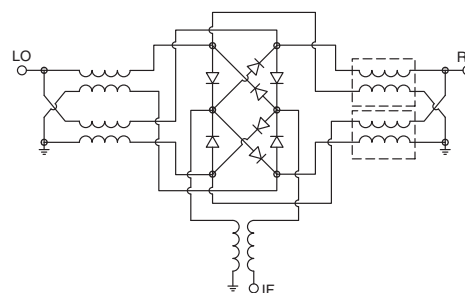
1 dB COMP.: +9 dBm typ.

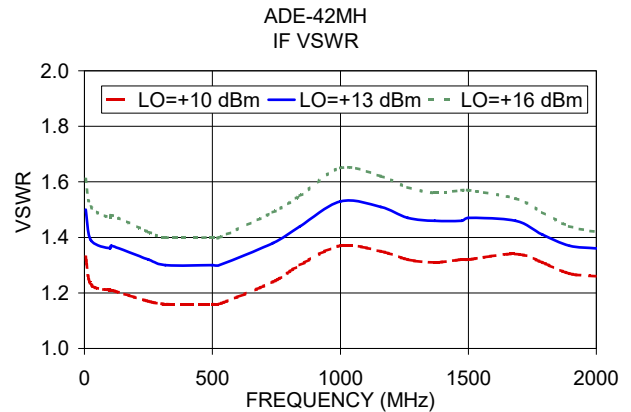
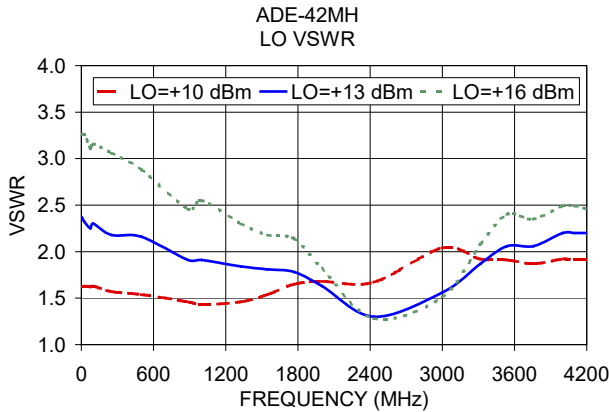
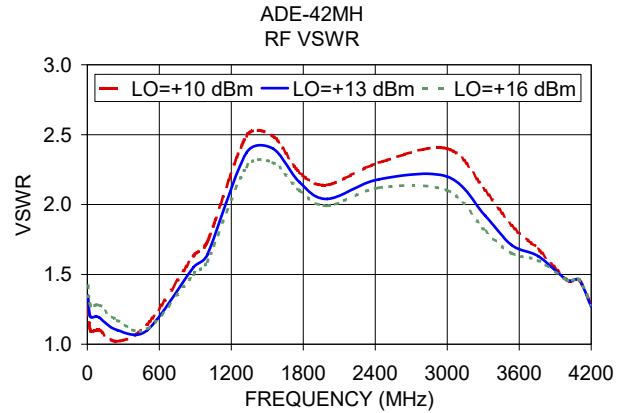
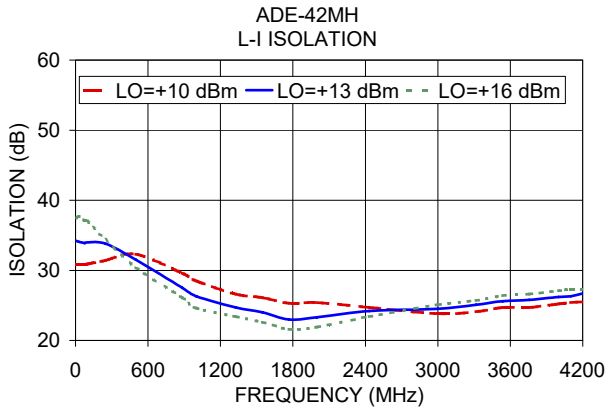
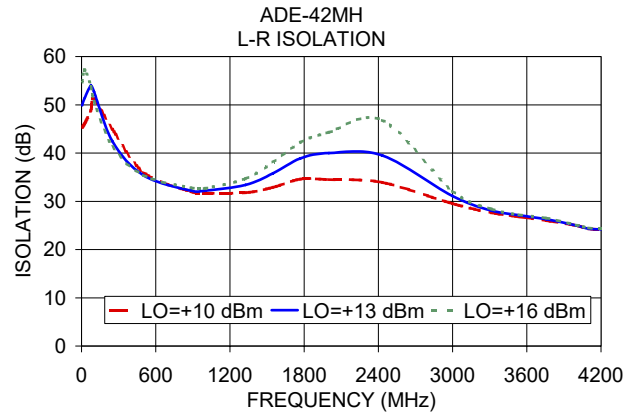
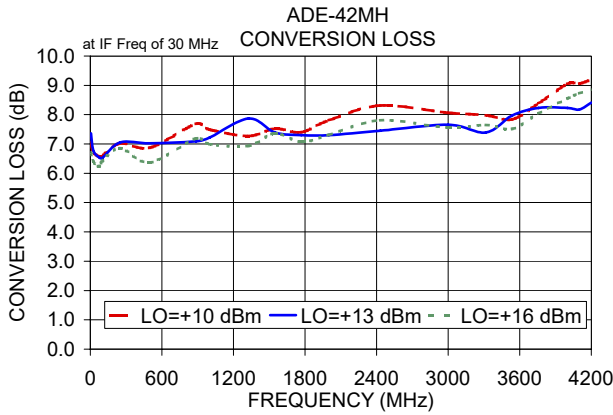
L = low range [ $f_L$  to 10  $f_L$ ] M = mid range [10  $f_L$  to  $f_U/2$ ] U = upper range [ $f_U/2$  to  $f_U$ ]  
m = mid band [ $2f_L$  to  $f_U/2$ ]

### Typical Performance Data

Frequency (MHz)		Conversion Loss (dB)	Isolation L-R (dB)	Isolation L-I (dB)	VSWR RF Port (:1)	VSWR LO Port (:1)
RF	LO	LO +13dBm	LO +13dBm	LO +13dBm	LO +13dBm	LO +13dBm
5.00	35.00	7.36	49.90	34.20	1.35	2.37
25.00	55.00	6.76	51.40	34.10	1.20	2.32
75.00	105.00	6.54	54.00	33.90	1.20	2.25
100.00	130.00	6.52	52.70	34.00	1.19	2.30
250.00	280.00	7.05	42.40	33.80	1.10	2.18
500.00	530.00	7.02	35.40	31.50	1.10	2.16
884.28	914.28	7.09	32.20	27.50	1.55	1.91
1000.00	1030.00	7.22	32.20	26.30	1.64	1.91
1326.38	1356.38	7.87	33.40	24.70	2.37	1.84
1547.43	1577.43	7.39	35.80	24.00	2.40	1.81
1768.47	1798.47	7.30	38.90	23.00	2.16	1.78
2000.00	2030.00	7.30	40.00	23.30	2.04	1.63
2431.62	2461.62	7.45	39.50	24.20	2.18	1.30
3000.00	2970.00	7.66	31.10	24.50	2.20	1.56
3315.81	3285.81	7.39	28.10	25.10	1.92	1.87
3536.85	3506.85	7.97	27.10	25.60	1.71	2.06
3757.90	3727.00	8.23	26.30	25.80	1.63	2.06
4000.00	3970.00	8.23	25.00	26.20	1.46	2.20
4100.00	4070.00	8.18	24.30	26.30	1.46	2.20
4200.00	4170.00	8.41	24.20	26.70	1.27	2.20

### Electrical Schematic





**Notes**

- A. Performance and quality attributes and conditions not expressly stated in this specification document are intended to be excluded and do not form a part of this specification document.
- B. Electrical specifications and performance data contained in this specification document are based on Mini-Circuit's applicable established test performance criteria and measurement instructions.
- C. The parts covered by this specification document are subject to Mini-Circuits standard limited warranty and terms and conditions (collectively, "Standard Terms"); Purchasers of this part are entitled to the rights and benefits contained therein. For a full statement of the Standard Terms and the exclusive rights and remedies thereunder, please visit Mini-Circuits' website at [www.minicircuits.com/MCLStore/terms.jsp](http://www.minicircuits.com/MCLStore/terms.jsp)



# Frequency Mixer

# ADE-42MH+

## Typical Performance Data

RF (IN) (MHz)	LO (MHz)	CONVERSION LOSS IF FIXED @IF(OUT)=30MHz (dB)			RF (IN) (MHz)	LO (MHz)	IP3 INPUT (dBm)			RF (IN) (MHz)	LO (MHz)	COMPRESSION @RF IN=+9dBm (dB)		
		@LO (dBm)					@LO (dBm)					@LO (dBm)		
		+10	+13	+16			+10	+13	+16			+10	+13	+16
5.0	35.0	7.05	7.36	6.71	10.1	40.1	26.15	25.71	26.67	10.1	40.1	1.41	0.97	0.67
10.1	40.1	6.96	6.68	6.51	109.9	139.9	21.72	22.47	22.02	109.9	139.9	1.36	0.94	0.64
109.9	139.9	7.28	7.02	6.86	209.6	239.6	19.87	19.31	20.04	209.6	239.6	1.43	0.99	0.71
209.6	239.6	7.35	7.10	6.95	309.4	339.4	17.92	18.47	21.00	309.4	339.4	1.45	1.07	0.80
309.4	339.4	7.49	7.21	7.04	409.1	439.1	17.27	19.45	24.08	409.1	439.1	1.56	1.20	0.94
409.1	439.1	7.61	7.26	7.06	508.9	538.9	17.52	20.82	27.88	508.9	538.9	1.61	1.26	1.01
508.9	538.9	7.76	7.35	7.11	608.7	638.7	18.73	24.34	24.87	608.7	638.7	1.71	1.39	1.11
608.7	638.7	7.81	7.37	7.12	708.4	738.4	19.37	24.64	22.85	708.4	738.4	1.83	1.52	1.23
708.4	738.4	7.88	7.40	7.13	808.2	838.2	20.09	22.49	22.02	808.2	838.2	1.77	1.45	1.14
808.2	838.2	8.03	7.55	7.27	908.0	938.0	20.43	20.49	20.57	908.0	938.0	1.97	1.65	1.33
908.0	938.0	7.94	7.46	7.21	1027.7	1057.7	20.23	19.80	20.64	1027.7	1057.7	2.04	1.68	1.38
1027.7	1057.7	7.81	7.39	7.16	1127.4	1157.4	18.65	19.12	19.88	1127.4	1157.4	1.99	1.65	1.38
1127.4	1157.4	7.89	7.51	7.29	1247.1	1277.1	18.01	18.90	20.11	1247.1	1277.1	1.75	1.42	1.20
1247.1	1277.1	8.22	7.86	7.64	1346.9	1376.9	17.99	18.77	20.07	1346.9	1376.9	1.48	1.15	0.96
1466.6	1496.6	8.70	8.42	8.22	1466.6	1496.6	18.12	18.76	19.93	1466.6	1496.6	1.37	1.01	0.81
1566.4	1596.4	8.69	8.38	8.21	1566.4	1596.4	18.71	19.68	20.58	1566.4	1596.4	1.28	0.96	0.74
1686.1	1716.1	8.81	8.44	8.22	1686.1	1716.1	18.41	19.98	20.36	1686.1	1716.1	1.18	0.90	0.70
1785.9	1815.9	8.97	8.54	8.32	1785.9	1815.9	18.32	19.54	20.37	1785.9	1815.9	0.99	0.76	0.60
1905.6	1935.6	9.08	8.63	8.36	1905.6	1935.6	17.61	18.94	20.03	1905.6	1935.6	0.80	0.60	0.50
2005.3	2035.3	9.08	8.59	8.36	2005.3	2035.3	16.82	18.31	19.36	2005.3	2035.3	0.76	0.58	0.47
2125.1	2155.1	9.13	8.66	8.45	2125.1	2155.1	17.44	18.70	19.21	2125.1	2155.1	0.62	0.43	0.35
2224.8	2254.8	9.11	8.66	8.46	2224.8	2254.8	17.75	18.88	19.52	2224.8	2254.8	0.57	0.40	0.33
2344.5	2374.5	8.96	8.53	8.34	2344.5	2374.5	17.98	18.67	19.57	2344.5	2374.5	0.60	0.41	0.35
2444.3	2474.3	8.90	8.46	8.25	2444.3	2474.3	18.39	18.88	19.95	2444.3	2474.3	0.63	0.41	0.35
2564.0	2594.0	8.92	8.48	8.28	2564.0	2594.0	18.89	19.33	19.89	2564.0	2594.0	0.63	0.38	0.31
2663.8	2693.8	8.93	8.49	8.30	2663.8	2693.8	19.60	19.64	20.07	2663.8	2693.8	0.59	0.37	0.28
2783.5	2813.5	8.85	8.40	8.22	2783.5	2813.5	19.23	19.32	19.76	2783.5	2813.5	0.71	0.38	0.30
2883.2	2913.2	8.87	8.42	8.23	2883.2	2913.2	19.21	19.11	19.51	2883.2	2913.2	0.77	0.45	0.34
3003.0	3033.0	8.93	8.49	8.29	3003.0	3033.0	18.82	18.72	19.20	3003.0	3033.0	0.82	0.47	0.35
3102.7	3132.7	8.96	8.53	8.34	3102.7	3132.7	18.07	18.45	18.87	3102.7	3132.7	0.89	0.52	0.37
3222.4	3252.4	9.01	8.58	8.38	3222.4	3252.4	17.27	17.92	18.58	3222.4	3252.4	1.02	0.62	0.49
3322.2	3352.2	9.14	8.75	8.54	3322.2	3352.2	16.52	17.35	18.36	3322.2	3352.2	1.06	0.67	0.49
3441.9	3471.9	9.28	8.90	8.73	3441.9	3471.9	15.55	16.51	17.80	3441.9	3471.9	1.23	0.78	0.55
3541.7	3571.7	9.38	8.98	8.84	3541.7	3571.7	15.15	15.65	16.66	3541.7	3571.7	1.38	0.92	0.63
3661.4	3691.4	9.49	9.11	8.91	3661.4	3691.4	14.39	14.93	15.97	3661.4	3691.4	1.56	1.09	0.81
3761.1	3791.1	9.67	9.30	9.06	3761.1	3791.1	14.04	14.70	15.64	3761.1	3791.1	1.64	1.17	0.92
3880.9	3910.9	9.88	9.50	9.28	3880.9	3910.9	13.68	14.49	15.13	3880.9	3910.9	1.76	1.26	1.03
3980.6	4010.6	10.05	9.64	9.40	3980.6	4010.6	13.58	14.47	15.07	3980.6	4010.6	1.93	1.39	1.20
4100.3	4130.3	10.37	9.93	9.66	4100.3	4130.3	13.52	14.58	15.31	4100.3	4130.3	1.88	1.37	1.15
4200.1	4230.1	10.76	10.33	10.04	4200.1	4230.1	13.89	15.17	15.78	4200.1	4230.1	1.94	1.33	1.11



# Frequency Mixer

# ADE-42MH+

## Typical Performance Data

IF (OUT) (MHz)	LO (MHz)	CONVERSION LOSS VS. IF FREQUENCY @RF(IN)=2100.1MHz (dB)	IF (OUT) (MHz)	LO (MHz)	CONVERSION LOSS VS. IF FREQUENCY @RF(IN)=10.1MHz (dB)	IF (OUT) (MHz)	LO (MHz)	CONVERSION LOSS VS. IF FREQUENCY @RF(IN)=4200.1MHz (dB)
		@LO (dBm)			@LO (dBm)			@LO (dBm)
		+13			+13			+13
2090.0	10.1	9.70	10.0	20.1	6.94	3500.0	700.1	10.45
2029.4	70.7	9.72	90.7	100.8	6.95	3420.2	779.9	10.37
1968.8	131.3	9.62	171.4	181.5	6.96	3340.5	859.6	10.33
1908.3	191.8	9.62	252.1	262.2	6.95	3240.7	959.4	10.35
1847.7	252.4	9.51	332.8	342.9	6.93	3161.0	1039.1	10.45
1787.1	313.0	9.49	413.5	423.6	6.92	3061.3	1138.8	10.41
1726.5	373.6	9.46	494.2	504.3	6.91	2981.5	1218.6	10.44
1665.9	434.2	9.38	595.0	605.1	6.87	2881.8	1318.3	10.29
1605.3	494.8	9.36	675.7	685.8	6.84	2802.0	1398.1	10.10
1544.8	555.3	9.29	776.6	786.7	6.86	2702.3	1497.8	9.85
1484.2	615.9	9.25	857.3	867.4	6.86	2622.5	1577.6	9.64
1423.6	676.5	9.24	958.2	968.3	6.87	2522.8	1677.3	9.51
1383.2	716.9	9.26	1038.8	1048.9	6.87	2443.0	1757.1	9.41
1322.6	777.5	9.26	1139.7	1149.8	6.94	2343.3	1856.8	9.38
1282.2	817.9	9.27	1220.4	1230.5	7.03	2263.5	1936.6	9.29
1221.7	878.4	9.24	1321.3	1331.4	7.19	2163.8	2036.3	9.10
1181.3	918.8	9.22	1402.0	1412.1	7.36	2084.1	2116.0	9.00
1120.7	979.4	9.14	1502.8	1512.9	7.56	1984.3	2215.8	8.95
1080.3	1019.8	9.07	1583.5	1593.6	7.68	1904.6	2295.5	8.93
1019.7	1080.4	9.00	1684.4	1694.5	7.87	1804.9	2395.2	8.96
979.3	1120.8	8.93	1765.1	1775.2	7.94	1725.1	2475.0	9.00
918.7	1181.4	8.85	1866.0	1876.1	7.98	1625.4	2574.7	9.05
878.3	1221.8	8.79	1946.6	1956.7	7.98	1545.6	2654.5	9.09
817.8	1282.3	8.73	2047.5	2057.6	8.01	1445.9	2754.2	9.15
777.4	1322.7	8.66	2128.2	2138.3	8.08	1366.1	2834.0	9.18
716.8	1383.3	8.69	2229.1	2239.2	8.22	1266.4	2933.7	9.23
676.4	1423.7	8.59	2309.8	2319.9	8.38	1186.6	3013.5	9.26
615.8	1484.3	8.58	2410.6	2420.7	8.56	1086.9	3113.2	9.29
575.4	1524.7	8.57	2491.3	2501.4	8.74	1007.1	3193.0	9.29
514.9	1585.2	8.58	2592.2	2602.3	8.93	907.4	3292.7	9.25
474.5	1625.6	8.58	2672.9	2683.0	9.10	827.7	3372.4	9.23
413.9	1686.2	8.61	2773.8	2783.9	9.30	727.9	3472.2	9.22
373.5	1726.6	8.58	2854.5	2864.6	9.40	648.2	3551.9	9.18
312.9	1787.2	8.58	2955.3	2965.4	9.60	548.5	3651.6	9.17
272.5	1827.6	8.55	3036.0	3046.1	9.73	468.7	3731.4	9.17
211.9	1888.2	8.52	3136.9	3147.0	9.90	369.0	3831.1	9.25
171.6	1928.5	8.48	3217.6	3227.7	10.16	289.2	3910.9	9.41
111.0	1989.1	8.46	3318.4	3328.5	10.32	189.5	4010.6	9.66
70.6	2029.5	8.44	3399.1	3409.2	10.54	109.7	4090.4	9.92
10.0	2090.1	8.43	3500.0	3510.1	10.68	10.0	4190.1	10.21

# Frequency Mixer

# ADE-42MH+

## Typical Performance Data

LO (MHz)	LO-RF ISOLATION (dB)			LO-IF ISOLATION (dB)		
	@LO (dBm)			@LO (dBm)		
	+10	+13	+16	+10	+13	+16
5.0	45.30	49.90	54.70	30.80	34.20	37.50
10.1	45.55	49.31	52.95	32.97	36.56	39.91
110.3	45.54	45.14	44.54	33.43	36.43	38.56
210.6	39.51	38.87	38.47	33.35	35.27	35.57
310.8	36.06	35.60	35.35	33.47	33.80	32.98
411.0	33.68	33.34	33.21	33.50	32.44	31.20
511.3	32.17	31.99	31.98	33.00	31.11	29.71
611.5	31.04	30.99	31.05	32.23	29.91	28.47
711.8	30.17	30.27	30.47	31.35	28.86	27.38
812.0	29.65	29.98	30.33	30.49	27.97	26.51
912.2	29.61	30.15	30.73	29.05	26.81	25.48
1012.5	29.71	30.54	31.29	27.85	25.93	24.73
1112.7	29.86	30.94	31.87	26.60	24.95	23.87
1233.0	30.15	31.45	32.65	25.67	24.20	23.20
1453.5	31.29	33.42	35.74	24.66	23.40	22.44
1553.7	31.74	34.28	37.51	24.50	23.28	22.35
1674.0	32.36	35.19	39.07	24.18	23.04	22.12
1774.3	32.77	35.96	40.60	24.01	22.90	21.98
1894.6	33.13	36.61	41.92	23.69	22.85	22.01
1994.8	33.08	36.75	42.31	23.24	22.71	22.03
2115.1	32.61	36.43	42.01	22.40	22.26	21.83
2215.3	32.16	35.89	41.40	21.73	21.86	21.68
2335.6	31.35	34.79	39.56	21.02	21.42	21.50
2435.8	30.92	33.96	37.77	20.53	20.98	21.22
2556.1	30.28	32.74	35.46	20.26	20.76	21.12
2656.4	29.70	31.56	33.26	20.25	20.76	21.20
2776.6	29.12	30.35	31.18	20.26	20.78	21.23
2876.9	28.68	29.38	29.69	20.36	20.87	21.31
2997.2	28.24	28.42	28.23	20.44	20.97	21.43
3097.4	27.89	27.68	27.28	20.54	21.06	21.50
3217.7	27.24	26.75	26.22	20.68	21.20	21.61
3317.9	26.70	26.03	25.49	20.85	21.42	21.86
3438.2	26.08	25.39	24.88	21.03	21.68	22.16
3538.4	25.51	24.93	24.62	21.03	21.68	22.17
3658.7	25.08	24.61	24.48	21.21	21.83	22.28
3759.0	24.86	24.53	24.41	21.31	21.89	22.31
3879.2	24.68	24.58	24.62	21.70	22.24	22.59
3979.5	24.51	24.58	24.72	22.18	22.67	23.01
4099.8	24.00	24.29	24.48	22.81	23.26	23.57
4200.0	23.70	24.15	24.37	23.51	23.92	24.22

RF (IN) (MHz)	LO (MHz)	RF-IF ISOLATION (dB)		
		@LO (dBm)		
		+10	+13	+16
10.1	40.1	22.62	22.98	22.88
110.1	140.1	22.73	22.64	22.72
210.1	240.1	22.99	22.97	23.11
310.1	340.1	23.73	23.86	24.20
410.1	440.1	24.86	25.15	25.64
510.1	540.1	26.52	26.97	27.59
610.1	640.1	28.64	29.15	29.69
710.1	740.1	31.37	31.32	31.29
810.1	840.1	33.88	32.81	31.92
910.1	940.1	34.72	32.47	31.02
1010.1	1040.1	33.00	31.27	29.77
1110.1	1140.1	30.63	29.69	28.49
1210.1	1240.1	29.02	28.47	27.40
1310.1	1340.1	27.65	27.10	26.38
1430.1	1460.1	26.51	26.11	25.38
1530.1	1560.1	25.54	25.21	24.64
1650.1	1680.1	24.75	24.49	24.07
1750.1	1780.1	24.27	24.20	23.89
1870.1	1900.1	23.66	23.70	23.51
1970.1	2000.1	23.26	23.37	23.26
2090.1	2120.1	22.76	23.01	23.06
2190.0	2220.0	22.32	22.61	22.78
2310.0	2340.0	22.21	22.53	22.71
2410.0	2440.0	21.95	22.36	22.57
2530.0	2560.0	21.86	22.37	22.70
2630.0	2660.0	21.86	22.39	22.76
2750.0	2780.0	22.01	22.48	22.96
2850.0	2880.0	22.27	22.69	23.15
2970.0	3000.0	22.64	23.06	23.42
3070.0	3100.0	22.89	23.36	23.73
3190.0	3220.0	23.20	23.71	24.12
3290.0	3320.0	23.57	24.11	24.55
3410.0	3440.0	23.62	24.02	24.48
3510.0	3540.0	23.82	24.13	24.51
3630.0	3660.0	24.26	24.29	24.39
3730.0	3760.0	24.76	24.54	24.32
3850.0	3880.0	25.73	25.21	24.88
3950.0	3980.0	26.80	25.94	25.36
4070.0	4100.0	27.80	26.68	25.85
4170.0	4200.0	28.09	27.11	26.33

# Frequency Mixer

# ADE-42MH+

## Typical Performance Data

RF (IN) (MHz)	LO (MHz)	RF VSWR (:1)		
		@LO (dBm)		
		+10	+13	+16
5.0	35.0	1.28	1.35	1.42
10.1	40.1	1.11	1.20	1.27
110.1	140.1	1.07	1.16	1.24
210.1	240.1	1.05	1.12	1.18
310.1	340.1	1.05	1.08	1.12
410.1	440.1	1.12	1.09	1.11
510.1	540.1	1.21	1.16	1.15
610.1	640.1	1.32	1.27	1.25
710.1	740.1	1.47	1.41	1.37
810.1	840.1	1.64	1.56	1.51
910.1	940.1	1.80	1.71	1.66
1010.1	1040.1	1.94	1.86	1.80
1110.1	1140.1	2.09	2.00	1.93
1210.1	1240.1	2.25	2.15	2.08
1310.1	1340.1	2.40	2.31	2.23
1430.1	1460.1	2.57	2.48	2.42
1530.1	1560.1	2.67	2.58	2.51
1650.1	1680.1	2.69	2.60	2.53
1750.1	1780.1	2.73	2.63	2.55
1870.1	1900.1	2.81	2.69	2.61
1970.1	2000.1	2.82	2.70	2.61
2090.1	2120.1	2.75	2.62	2.54
2190.0	2220.0	2.72	2.58	2.49
2310.0	2340.0	2.71	2.56	2.45
2410.0	2440.0	2.64	2.48	2.37
2530.0	2560.0	2.52	2.36	2.24
2630.0	2660.0	2.49	2.32	2.19
2750.0	2780.0	2.48	2.30	2.16
2850.0	2880.0	2.42	2.24	2.11
2970.0	3000.0	2.34	2.16	2.04
3070.0	3100.0	2.33	2.14	2.02
3190.0	3220.0	2.30	2.12	1.99
3290.0	3320.0	2.22	2.06	1.94
3410.0	3440.0	2.14	2.01	1.90
3510.0	3540.0	2.12	1.99	1.88
3630.0	3660.0	2.04	1.94	1.85
3730.0	3760.0	1.90	1.84	1.80
3850.0	3880.0	1.76	1.74	1.73
3950.0	3980.0	1.67	1.68	1.69
4070.0	4100.0	1.56	1.60	1.64
4170.0	4200.0	1.52	1.59	1.64

LO (MHz)	LO VSWR (:1)		
	@LO (dBm)		
	+10	+13	+16
5.0	1.63	2.37	3.26
10.1	1.71	2.42	3.31
110.3	1.64	2.29	3.12
210.6	1.63	2.26	3.07
310.8	1.65	2.27	3.05
411.0	1.66	2.26	3.00
511.3	1.64	2.21	2.91
611.5	1.65	2.18	2.84
711.8	1.65	2.15	2.77
812.0	1.64	2.11	2.69
912.2	1.62	2.07	2.64
1012.5	1.60	2.03	2.57
1112.7	1.61	1.99	2.49
1233.0	1.64	1.94	2.39
1333.2	1.68	1.92	2.32
1453.5	1.72	1.87	2.21
1553.7	1.75	1.84	2.14
1674.0	1.77	1.79	2.04
1774.3	1.79	1.74	1.95
1894.6	1.79	1.69	1.86
1994.8	1.79	1.63	1.76
2115.1	1.77	1.54	1.64
2215.3	1.73	1.47	1.54
2335.6	1.69	1.36	1.41
2435.8	1.65	1.29	1.31
2556.1	1.61	1.20	1.21
2656.4	1.57	1.15	1.16
2776.6	1.55	1.14	1.17
2876.9	1.54	1.19	1.25
2997.2	1.53	1.28	1.37
3097.4	1.53	1.36	1.48
3217.7	1.51	1.45	1.61
3317.9	1.53	1.54	1.72
3438.2	1.56	1.65	1.85
3538.4	1.63	1.76	1.97
3658.7	1.71	1.90	2.12
3759.0	1.81	2.04	2.26
3879.2	1.92	2.18	2.41
3979.5	2.02	2.31	2.55
4099.8	2.13	2.43	2.67
4200.0	2.24	2.55	2.79

IF (OUT) (MHz)	IF VSWR @LO=4200MHz (:1)		
	@LO (dBm)		
	+10	+13	+16
5.0	1.33	1.50	1.61
10.1	1.53	1.39	1.31
90.3	1.59	1.46	1.38
170.6	1.61	1.48	1.40
250.8	1.58	1.46	1.39
331.0	1.56	1.44	1.37
431.3	1.57	1.46	1.40
511.5	1.56	1.46	1.41
611.8	1.55	1.47	1.44
692.1	1.51	1.45	1.45
792.3	1.49	1.44	1.45
872.6	1.46	1.42	1.44
972.9	1.45	1.43	1.45
1053.1	1.47	1.47	1.51
1153.4	1.46	1.48	1.54
1233.6	1.45	1.50	1.58
1333.9	1.46	1.53	1.62
1414.1	1.46	1.53	1.62
1514.4	1.49	1.56	1.65
1594.6	1.54	1.62	1.71
1694.9	1.59	1.67	1.76
1775.2	1.58	1.67	1.76
1875.4	1.58	1.66	1.75
1955.7	1.52	1.59	1.67
2056.0	1.52	1.58	1.64
2136.2	1.60	1.65	1.71
2236.5	1.61	1.66	1.73
2316.7	1.61	1.67	1.74
2417.0	1.59	1.66	1.73
2497.2	1.59	1.65	1.70
2597.5	1.66	1.71	1.77
2677.7	1.88	1.94	1.99
2778.0	2.03	2.08	2.13
2858.3	2.10	2.16	2.22
2958.5	2.27	2.32	2.38
3038.8	2.37	2.42	2.47
3139.1	2.73	2.77	2.82
3219.3	3.15	3.19	3.24
3319.6	3.45	3.48	3.53
3399.8	3.26	3.29	3.33
3500.1	3.45	3.47	3.50

## Harmonics Tables

RF HARMONICS ORDER

	(-dBm)	(-dBc)										
0	-	-	5	22	25	40	30	49	45	59	51	61
1	-	16	+0	31	17	40	28	37	41	64	58	59
2	74	60	40	41	60	48	49	51	42	58	64	69
3	>100	48	38	46	40	48	46	52	54	48	54	74
4	77	64	59	69	65	59	58	61	59	63	56	71
5	92	78	66	70	61	64	56	62	61	60	71	62
6	88	90	86	91	88	79	81	72	75	74	70	76
7	89	>95	92	>95	84	79	77	75	72	72	75	73
8	100	>95	>95	>95	93	>95	94	89	89	83	83	85
9	>100	>95	>95	>95	>95	>95	>95	94	91	86	86	82
10	>100	>95	>95	>95	>95	>95	>95	>95	>95	>95	>95	93
	RF CAL	0	1	2	3	4	5	6	7	8	9	10

### LO HARMONICS ORDER

Test conditions: RF IN: 2100.1 MHz; 4.00 dBm.  
 LO IN: 2130.01 MHz; +13.00 dBm  
 IF OUT: 29.91 MHz; -4.51 dBm

RF HARMONICS ORDER

	(-dBm)	(-dBc)										
0	-	-	+5	12	14	27	17	36	33	48	34	43
1	-	16	+0	31	17	38	27	33	36	61	56	48
2	84	60	49	51	69	57	73	59	47	65	66	69
3	>100	70	59	69	60	68	65	70	72	65	70	>85
4	91	>85	>85	>85	>85	>85	>85	>85	>85	>85	82	>85
5	>100	>85	>85	>85	>85	>85	>85	>85	>85	>85	>85	>85
6	>100	>85	>85	>85	>85	>85	>85	>85	>85	>85	>85	>85
7	>100	>85	>85	>85	>85	>85	>85	>85	>85	>85	>85	>85
8	>100	>85	>85	>85	>85	>85	>85	>85	>85	>85	>85	>85
9	>100	>85	>85	>85	>85	>85	>85	>85	>85	>85	>85	>85
10	>100	>85	>85	>85	>85	>85	>85	>85	>85	>85	>85	>85
	RF CAL	0	1	2	3	4	5	6	7	8	9	10

### LO HARMONICS ORDER

Test conditions: RF IN: 2100.1 MHz; -6.00 dBm.  
 LO IN: 2130.01 MHz; +13.00 dBm  
 IF OUT: 29.91 MHz; -14.55 dBm

- Notes: 1. All Harmonics are in (dBc) relative to IF OUTPUT.  
 2. + entry denotes harmonics are in (dBc) above IF OUTPUT.  
 3. RF Cal represent the Harmonics level of the RF input signal to the mixer.

REV. X2  
 ADE-42MH+  
 100817  
 Page 5 of 5



IF/RF MICROWAVE COMPONENTS • ISO 9001 ISO 14001 AS 9100 CERTIFIED • RoHS compliant  
 P.O. Box 350166, Brooklyn, New York 11235-0006 (718) 934-4500 Fax (718) 332-4661

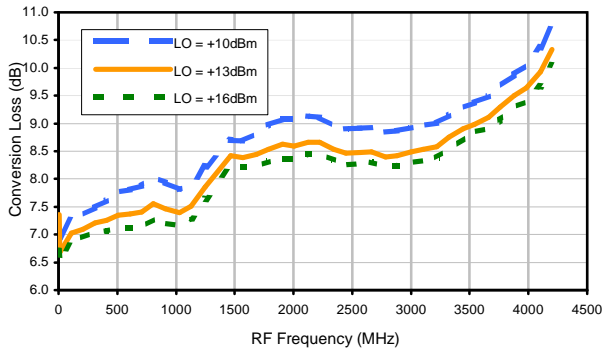


The Design Engineers Search Engine finds the model you need, Instantly • For detailed performance specs & shopping online see

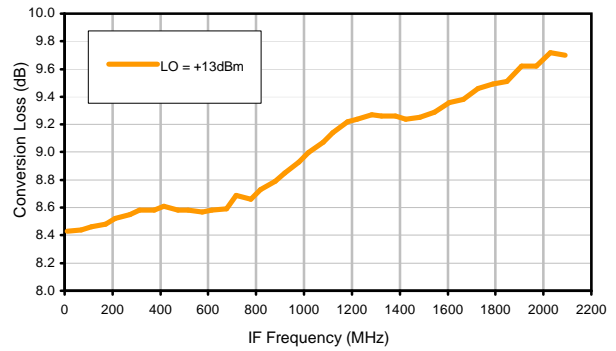


## Typical Performance Curves

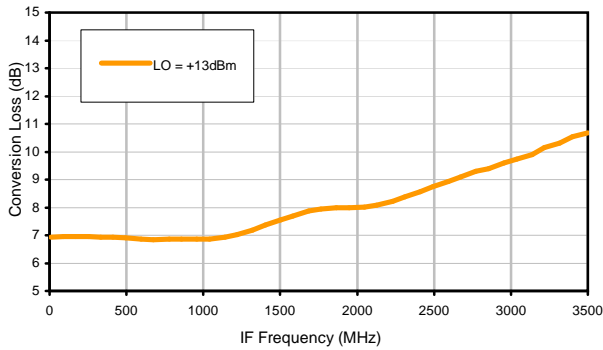
Conversion Loss @ IF=30MHz



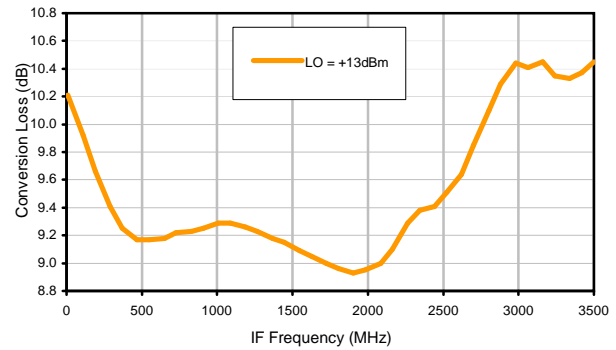
Conversion Loss vs. IF @ RF=2100.1MHz



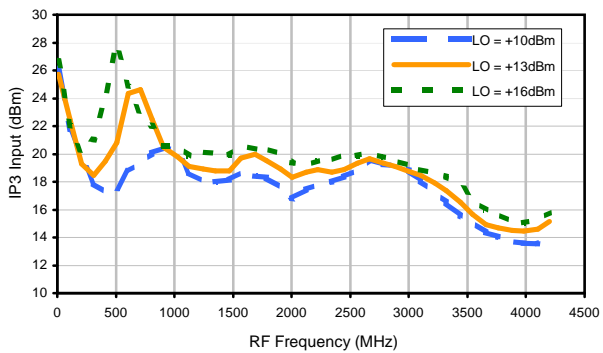
Conversion Loss vs. IF @ RF=10.1MHz



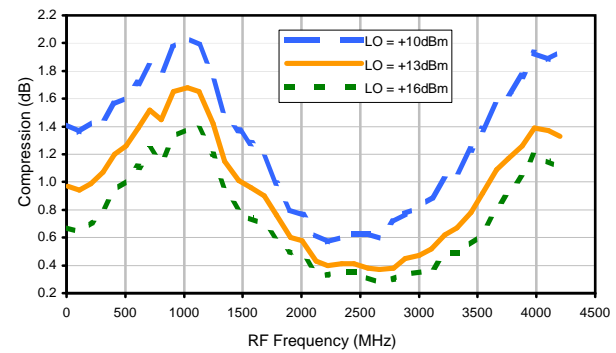
Conversion Loss vs. IF @ RF=4200.1MHz



IP3 Input



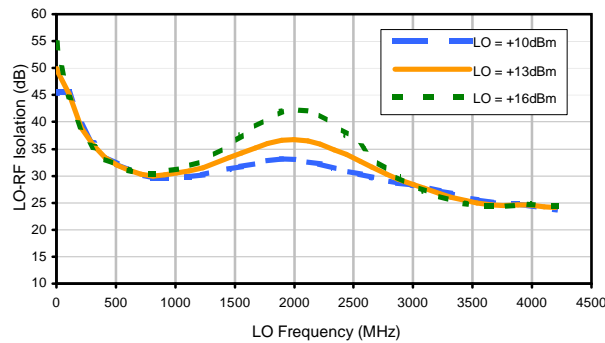
Compression @ RF IN=+9dBm



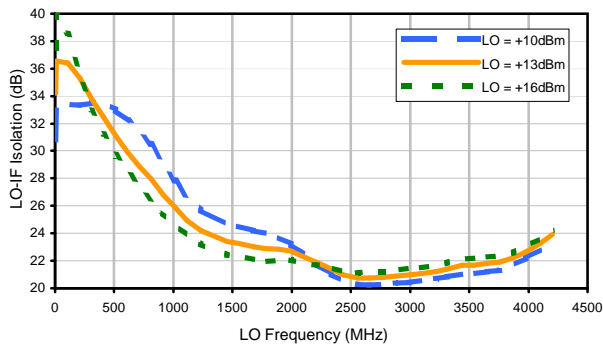


## Typical Performance Curves

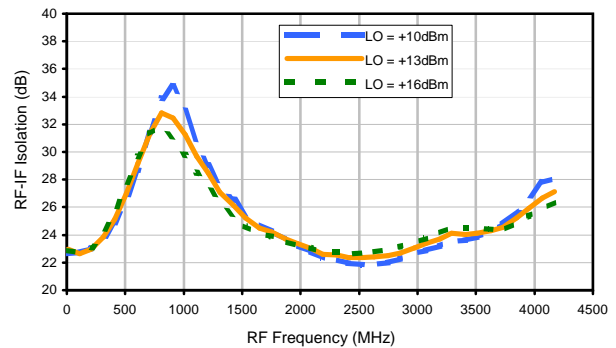
LO-RF Isolation



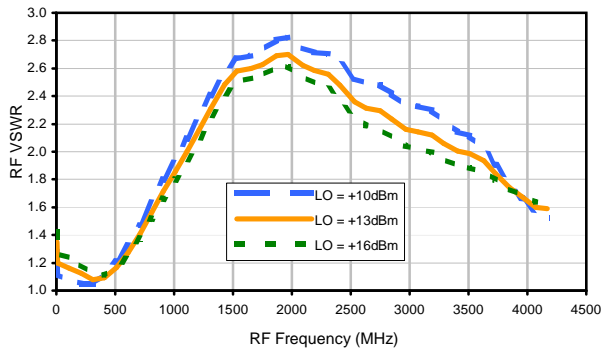
LO-IF Isolation



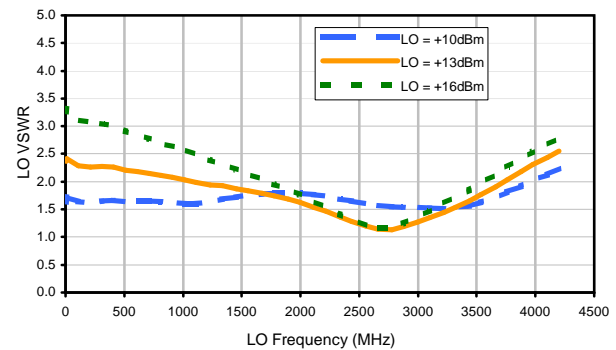
RF-IF Isolation



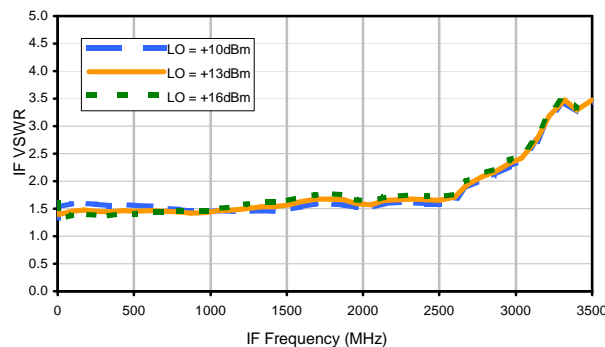
RF VSWR



LO VSWR



IF VSWR



## Harmonics Tables

RF HARMONICS ORDER

	(-dBm)	(-dBc)										
0	-	-	5	22	25	40	30	49	45	59	51	61
1	-	16	+0	31	17	40	28	37	41	64	58	59
2	74	60	40	41	60	48	49	51	42	58	64	69
3	>100	48	38	46	40	48	46	52	54	48	54	74
4	77	64	59	69	65	59	58	61	59	63	56	71
5	92	78	66	70	61	64	56	62	61	60	71	62
6	88	90	86	91	88	79	81	72	75	74	70	76
7	89	>95	92	>95	84	79	77	75	72	72	75	73
8	100	>95	>95	>95	93	>95	94	89	89	83	83	85
9	>100	>95	>95	>95	>95	>95	>95	94	91	86	86	82
10	>100	>95	>95	>95	>95	>95	>95	>95	>95	>95	>95	93
	RF CAL	0	1	2	3	4	5	6	7	8	9	10

### LO HARMONICS ORDER

Test conditions: RF IN: 2100.1 MHz; 4.00 dBm.  
 LO IN: 2130.01 MHz; +13.00 dBm  
 IF OUT: 29.91 MHz; -4.51 dBm

RF HARMONICS ORDER

	(-dBm)	(-dBc)										
0	-	-	+5	12	14	27	17	36	33	48	34	43
1	-	16	+0	31	17	38	27	33	36	61	56	48
2	84	60	49	51	69	57	73	59	47	65	66	69
3	>100	70	59	69	60	68	65	70	72	65	70	>85
4	91	>85	>85	>85	>85	>85	>85	>85	>85	>85	82	>85
5	>100	>85	>85	>85	>85	>85	>85	>85	>85	>85	>85	>85
6	>100	>85	>85	>85	>85	>85	>85	>85	>85	>85	>85	>85
7	>100	>85	>85	>85	>85	>85	>85	>85	>85	>85	>85	>85
8	>100	>85	>85	>85	>85	>85	>85	>85	>85	>85	>85	>85
9	>100	>85	>85	>85	>85	>85	>85	>85	>85	>85	>85	>85
10	>100	>85	>85	>85	>85	>85	>85	>85	>85	>85	>85	>85
	RF CAL	0	1	2	3	4	5	6	7	8	9	10

### LO HARMONICS ORDER

Test conditions: RF IN: 2100.1 MHz; -6.00 dBm.  
 LO IN: 2130.01 MHz; +13.00 dBm  
 IF OUT: 29.91 MHz; -14.55 dBm

- Notes: 1. All Harmonics are in (dBc) relative to IF OUTPUT.  
 2. + entry denotes harmonics are in (dBc) above IF OUTPUT.  
 3. RF Cal represent the Harmonics level of the RF input signal to the mixer.

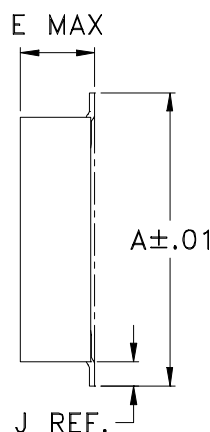
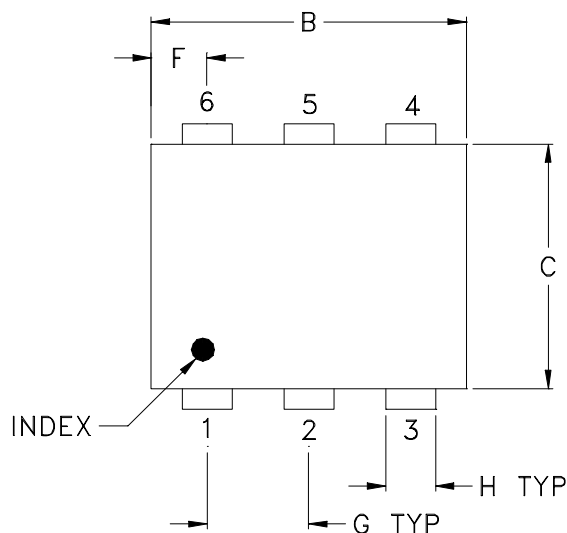


# Case Style

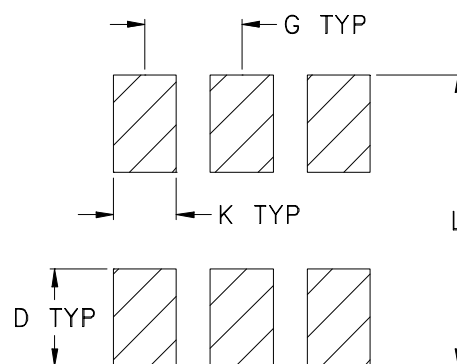
# CD

CD541  
CD542  
CD636  
CD637

## Outline Dimensions



## PCB Land Pattern



Suggested Layout,  
Tolerance to be within  $\pm .002$

CASE#	A	B	C	D	E	F	G	H	J	K	L	WT, GRAM
CD541					.082 (2.08)							.15
CD542	.272 (6.91)	.310 (7.87)	.220 (5.58)	.100 (2.54)	.112 (2.84)	.055 (1.40)	.100 (2.54)	.030 (0.76)	.026 (0.66)	.065 (1.65)	.300 (7.62)	.20
CD636					.162 (4.11)							.25
CD637					.206 (5.23)							.40

Dimensions are in inches (mm). Tolerances: 2 Pl.  $\pm .01$ ; 3 Pl.  $\pm .005$

### Notes:

- Case material: Plastic.
- Termination finish:
  - For RoHS Case Styles: Tin plate over Nickel plate. All models, (+) suffix.
  - For RoHS-5 Case Styles: Tin-Lead plate. All models, no (+) suffix.

**Mini-Circuits®**

INTERNET <http://www.minicircuits.com>

P.O. Box 350166, Brooklyn, New York 11235-0003 (718) 934-4500 Fax (718) 332-4661

Distribution Centers NORTH AMERICA 800-654-7949 • 417-335-5935 • Fax 417-335-5945 • EUROPE 44-1252-832600 • Fax 44-1252-837010

Mini-Circuits ISO 9001 & ISO 14001 Certified

# Tape & Reel Packaging TR-F34



Tape Width, mm	Device Cavity Pitch, mm	Reel Size, inches	Devices per Reel see note	
16	12	7	Small quantity standard (see note)	20
				50
			100	
			200	
		13	Standard	500
				1000

Note: Availability of small reel quantity varies by model.  
Refer to pricing and availability on individual model dashboard.

Mini-Circuits carrier tape materials provide protection from ESD (Electro-Static Discharge) during handling and transportation. Tapes are static dissipative and comply with industry standards EIA-481/EIA-541.

Go to: [www.minicircuits.com/pages/pdfs/tape.pdf](http://www.minicircuits.com/pages/pdfs/tape.pdf)



INTERNET <http://www.minicircuits.com>

P.O. Box 350166, Brooklyn, New York 11235-0003 (718) 934-4500 Fax (718) 332-4661

Distribution Centers NORTH AMERICA 800-654-7949 • 417-335-5935 • Fax 417-335-5945 • EUROPE 44-1252-832600 • Fax 44-1252-837010

Mini-Circuits ISO 9001 & ISO 14001 Certified

THIRD ANGLE PROJECTION



REVISIONS

REV	ECN No.	DESCRIPTION	DATE	DR	AUTH
A	M101143	ADDED "gk" PIN CONNECTION, TT100 CASE STYLE & NOTE 2	10/10/05	MMG	DJ
B	M102713	ADDED "...WITH SMOBC"	01/17/06	MMG	IL
C	M108637	REMOVED "PIN 1", ADDED INDEX ON UNIT	12/01/06	MYG	FL

**SUGGESTED MOUNTING CONFIGURATION  
FOR BH292, CD541/542/636/637, TT100/240 CASE  
STYLES, "gk", "ht", "hu", "nd", "w" PIN CONNECTIONS**



- NOTES:** 1. TRACE WIDTH IS SHOWN FOR ROGERS R04350B WITH DIELECTRIC THICKNESS .030" ± .002"; COPPER: 1/2 OZ. EACH SIDE. FOR OTHER MATERIALS TRACE WIDTH MAY NEED TO BE MODIFIED.  
2. BOTTOM SIDE OF THE PCB IS CONTINUOUS GROUND PLANE.

- DENOTES PCB COPPER LAYOUT WITH SMOBC (SOLDER MASK OVER BARE COPPER)
- DENOTES COPPER LAND PATTERN FREE OF SOLDER MASK

UNLESS OTHERWISE SPECIFIED  DIMENSIONS ARE IN INCHES TOLERANCES ON: 2 PL DECIMALS ± 3 PL DECIMALS ± .005 ANGLES ± FRACTIONS ±		INITIALS	DATE
	DRAWN	MMG	07/17/02
	CHECKED	WL	08/02/02
	APPROVED	DJ	08/05/02

**Mini-Circuits®** 13 Neptune Avenue  
Brooklyn NY 11235

PL, gk/ht/hu/nd/w, BH292,  
 CD541/542/636/637, TT100/240, TB-03

SIZE A	CODE IDENT 15542	DRAWING NO: 98-PL-052	REV: C
FILE: 98PL052	SCALE: 8:1	SHEET: 1 OF 1	

Mini-Circuits®  
 THIS DOCUMENT AND ITS CONTENTS ARE THE PROPERTY OF MINI-CIRCUITS. EXCEPT FOR USE EXPRESSLY GRANTED, IN WRITING, TO ITS VENDORS, VENDEE AND THE UNITED STATES GOVERNMENT, MINI-CIRCUITS RESERVES ALL PROPRIETARY DESIGN, USE, MANUFACTURING AND REPRODUCTION RIGHTS THERETO. THESE CONTENTS SHALL NOT BE USED, DUPLICATED OR DISCLOSED TO ANY OUTSIDE PARTY, IN WHOLE OR IN PART, WITHOUT WRITTEN PERMISSION OF MINI-CIRCUITS.

# Evaluation Board and Circuit

For Pin Connections and DUT Orientation Refer to  
Data Sheet of the DUT




TB-03



Schematic Diagram

## Notes:

1. 50 Ohm SMA Female connectors.
2. PCB Material: Rogers R04350 or equivalent,  
Dielectric Constant=3.5, Thickness=.030 inch.

 **Mini-Circuits®**



All Mini-Circuits products are manufactured under exacting quality assurance and control standards, and are capable of meeting published specifications after being subjected to any or all of the following physical and environmental test.

Specification	Test/Inspection Condition	Reference/Spec
Operating Temperature	-40° to 85°C Ambient Environment	Individual Model Data Sheet
Storage Temperature	-55° to 100° C Ambient Environment	Individual Model Data Sheet
Humidity	90 to 95% RH, 240 hours, 50°C	MIL-STD-202, Method 103, Condition A, Except 50°C and end-point electrical test done within 12 hours
Thermal Shock	-55° to 100°C, 100 cycles	MIL-STD-202, Method 107, Condition A-3, except +100°C
Solder Reflow Heat	Sn-Pb Eutetic Process: 225°C peak Pb-Free Process 245° - 250°C peak	J-STD-020, Table 4-1, 4-2 and 5-2, Figure 5-1
Solderability	10X Magnification	J-STD-002, 95% Coverage
Vibration (High Frequency)	20g peak, 10-2000 Hz, 12 times in each of three perpendicular directions (total 36)	MIL-STD-202, Method 204, Condition D
Mechanical Shock	50g, 11 ms, 1/2-sine, 18 shocks: 3 each direction, each of 3 axes	MIL-STD-202, Method 213, Condition A
Marking Resistance to Solvents	Isopropyl alcohol + mineral spirits at 25°C; terpene defluxer at 25°C; distilled water + proylene glycol monomethyl ether + monoethanolamine at 63°C to 70°C	MIL-STD-202, Method 215