

Surface Mount Directional Coupler

ADC-20-132+

50Ω 100 to 1300 MHz

The Big Deal

- Useable to 1500 MHz
- Low mainline loss, 0.4 dB
- High directivity, 22 dB
- High-Power, 4W



CASE STYLE: CD542

Product Overview

Mini-Circuits' ADC-20-132+ is a surface-mount directional coupler providing 20 dB coupling from 100 to 1300 MHz. This model, provides good coupling flatness, low mainline loss, high directivity and RF input power handling up to 4W. The unit comes housed in a miniature 6-lead plastic package (0.27 x 0.31 x 0.11"), saving space in dense PCB layouts.

Key Features

Feature	Advantages
Usable to 1500 MHz	The ADC-20-132+ supports a variety of applications.
Good coupling flatness, ± 1.5 dB	Provides consistent coupling performance across frequency.
High power handling: <ul style="list-style-type: none">• 4W to 700 MHz• 2W to 1300 Mhz	Usable in systems with a wide range of high-power requirements.
Low mainline loss, 0.4 dB	Provides excellent through-path signal power transmission.
High directivity, 22 dB	High directivity allows accurate signal sampling through the coupled port with minimal measurement error.
Small size, 0.27 x 0.31 x 0.11"	Provides high power capability while saving space in systems with tight layouts.

Notes

- A. Performance and quality attributes and conditions not expressly stated in this specification document are intended to be excluded and do not form a part of this specification document.
B. Electrical specifications and performance data contained in this specification document are based on Mini-Circuit's applicable established test performance criteria and measurement instructions.
C. The parts covered by this specification document are subject to Mini-Circuits standard limited warranty and terms and conditions (collectively, "Standard Terms"); Purchasers of this part are entitled to the rights and benefits contained therein. For a full statement of the Standard Terms and the exclusive rights and remedies thereunder, please visit Mini-Circuits' website at www.minicircuits.com/MCLStore/terms.jsp



Surface Mount Directional Coupler

ADC-20-132+

50Ω 100 to 1300 MHz

Maximum Ratings

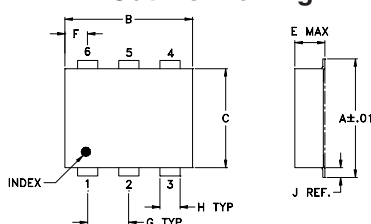
Operating Temperature	-40°C to 85°C
Storage Temperature	-55°C to 100°C

Permanent damage may occur if any of these limits are exceeded.

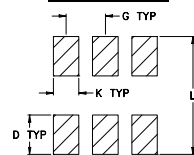
Pin Connections

INPUT	1
OUTPUT	6
COUPLED	3
GROUND	2
50Ω TERM EXTERNAL	4
ISOLATE (DO NOT USE)	5

Outline Drawing



PCB Land Pattern

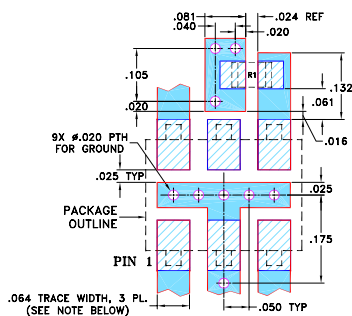


Suggested Layout,
Tolerance to be within ±.002

Outline Dimensions (inch/mm)

A	B	C	D	E	F	G
.272	.310	.220	.100	.112	.055	.100
6.91	7.87	5.59	2.54	2.84	1.40	2.54
H	J	K	L			wt
.030	.026	.065	.300			grams
0.76	0.66	1.65	7.62			0.20

Demo Board MCL P/N: TB-05 Suggested PCB Layout (PL-095)



RESISTOR R1: 49.9 Ohm, 0805 SIZE.
 NOTES: 1. TRACE WIDTH IS SHOWN FOR ROGERS RO4350B WITH DIELECTRIC THICKNESS .030" ± .002"; COPPER: 1/2 OZ. EACH SIDE. FOR OTHER MATERIALS TRACE WIDTH MAY NEED TO BE MODIFIED.
 2. BOTTOM SIDE OF THE PCB IS CONTINUOUS GROUND PLANE.
 DENOTES PCB COPPER LAYOUT WITH SMOBC (SOLDER MASK OVER BARE COPPER)
 DENOTES COPPER LAND PATTERN FREE OF SOLDER MASK

Notes

- Performance and quality attributes and conditions not expressly stated in this specification document are intended to be excluded and do not form a part of this specification document.
- Electrical specifications and performance data contained in this specification document are based on Mini-Circuit's applicable established test performance criteria and measurement instructions.
- The parts covered by this specification document are subject to Mini-Circuits standard limited warranty and terms and conditions (collectively, "Standard Terms"); Purchasers of this part are entitled to the rights and benefits contained therein. For a full statement of the Standard Terms and the exclusive rights and remedies thereunder, please visit Mini-Circuits' website at www.minicircuits.com/MCLStore/terms.jsp

Features

- useable to 1500 MHz
- low mainline loss, 0.4 dB typ.
- high directivity, 22 dB typ.
- aqueous washable
- protected by U.S Patents 6,133,525 & 6,140,887

Applications

- cable tv



Generic photo used for illustration purposes only
 CASE STYLE: CD542

+RoHS Compliant

The +Suffix identifies RoHS Compliance. See our web site for RoHS Compliance methodologies and qualifications

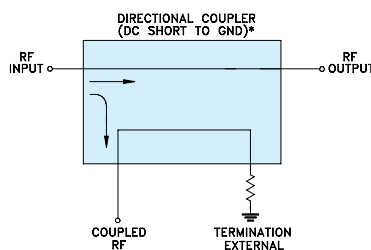
Available Tape and Reel at no extra cost	
Reel Size	Devices/Reel
7"	20, 50, 100, 200
13"	500, 1000

Electrical Specifications at 25°C

Parameter	Condition (MHz)	Min.	Typ.	Max.	Unit
Frequency Range		100	—	1300	MHz
Mainline Loss ¹	100	—	0.3	0.6	dB
	500	—	0.2	0.4	
	1000	—	0.3	0.5	
	1300	—	0.4	0.7	
Coupling	100-1300	—	20	—	dB
Coupling Flatness(±)	100-1000	—	1.0	1.6	dB
	100-1300	—	1.5	2.5	
Directivity	100	20	25	—	dB
	500	18	23	—	
	1000	14	18	—	
	1300	10	15	—	
Return Loss (Input)	200-1000	—	19	—	dB
	100-1300	—	15	—	
Return Loss (Output)	200-1000	—	20	—	dB
	100-1300	—	15	—	
Return Loss (Coupling)	200-1000	—	17	—	dB
	100-1300	—	15	—	
Input Power	200-700	—	—	4	W
	100-1300	—	—	2	

1. Mainline loss includes theoretical power loss at coupled port.

Electrical Schematic



* ELECTRICAL SCHEMATIC IS FOR DIRECTIONAL COUPLER WITH INTERNAL TRANSFORMER(S) AND EXTERNAL TERMINATION.

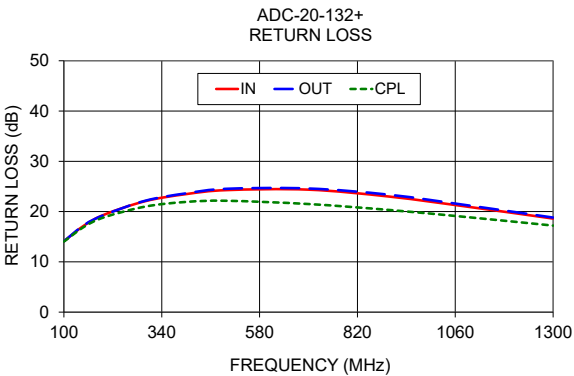
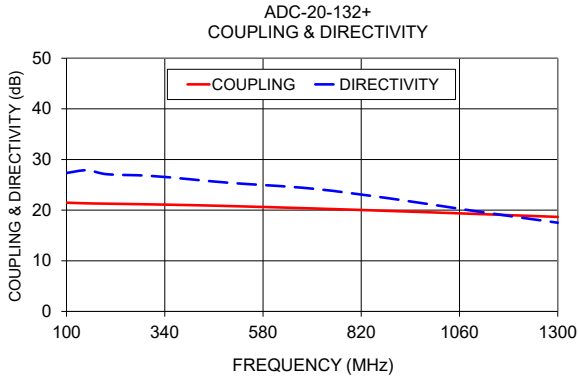
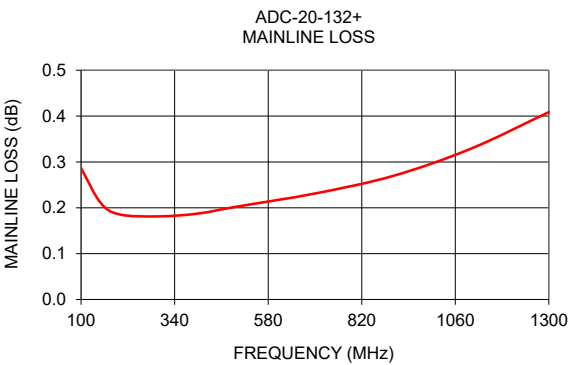


www.minicircuits.com P.O. Box 350166, Brooklyn, NY 11235-0003 (718) 934-4500 sales@minicircuits.com

REV. OR
 M155179
 ED-13396/2
 ADC-20-132+
 CH/CP/AM
 200414
 Page 2 of 3

Typical Performance Data

Frequency (MHz)	Mainline Loss (dB)		Coupling (dB) In-Cpl	Directivity (dB)	Return Loss (dB)		
	In-Out				In	Out	Cpl
100	0.29		21.48	27.34	14.11	14.11	14.04
150	0.21		21.34	27.88	17.26	17.36	17.00
200	0.19		21.28	27.08	19.43	19.37	18.90
300	0.18		21.15	26.79	22.08	22.17	21.00
400	0.19		20.99	26.11	23.48	23.63	21.92
500	0.20		20.80	25.38	24.27	24.54	22.15
700	0.23		20.34	24.25	24.36	24.59	21.50
900	0.27		19.81	22.20	22.97	23.33	20.31
1100	0.33		19.25	19.78	20.86	21.14	18.82
1300	0.41		18.66	17.52	18.61	18.81	17.21



Notes

- A. Performance and quality attributes and conditions not expressly stated in this specification document are intended to be excluded and do not form a part of this specification document.
- B. Electrical specifications and performance data contained in this specification document are based on Mini-Circuit's applicable established test performance criteria and measurement instructions.
- C. The parts covered by this specification document are subject to Mini-Circuits standard limited warranty and terms and conditions (collectively, "Standard Terms"); Purchasers of this part are entitled to the rights and benefits contained therein. For a full statement of the Standard Terms and the exclusive rights and remedies thereunder, please visit Mini-Circuits' website at www.minicircuits.com/MCLStore/terms.jsp



Directional Coupler

ADC-20-132+

Typical Performance Data

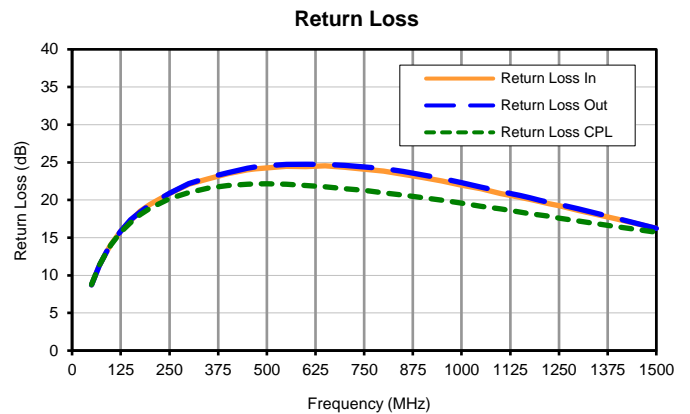
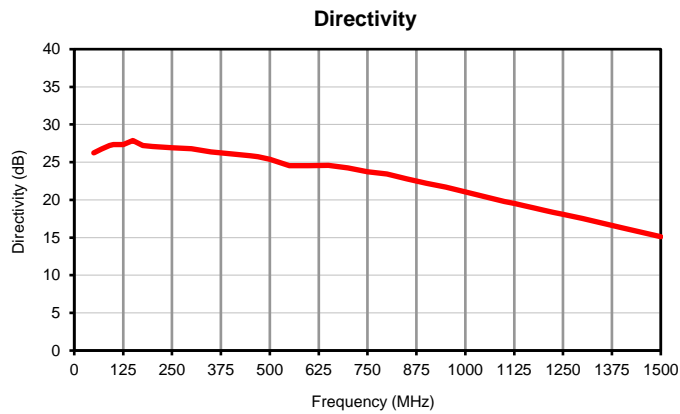
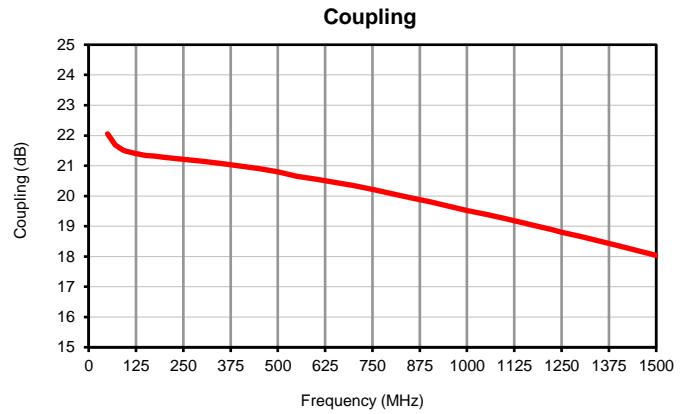
FREQUENCY (MHz)	INSERTION LOSS (dB)	COUPLING (dB)	DIRECTIVITY (dB)	RETURN LOSS (dB)		
				IN	OUT	CPL
50	0.74	22.05	26.23	8.72	8.72	8.78
70	0.45	21.68	26.76	11.27	11.27	11.31
90	0.32	21.52	27.22	13.26	13.28	13.24
100	0.29	21.48	27.34	14.11	14.11	14.04
125	0.23	21.40	27.33	15.84	15.84	15.70
150	0.21	21.34	27.88	17.26	17.36	17.00
175	0.19	21.31	27.20	18.51	18.39	18.05
200	0.19	21.28	27.08	19.43	19.37	18.90
250	0.18	21.21	26.93	20.88	20.92	20.17
300	0.18	21.15	26.79	22.08	22.17	21.00
350	0.19	21.07	26.35	22.82	22.98	21.57
400	0.19	20.99	26.11	23.48	23.63	21.92
450	0.19	20.90	25.87	24.00	24.20	22.09
470	0.20	20.87	25.71	24.12	24.37	22.12
500	0.20	20.80	25.38	24.27	24.54	22.15
550	0.21	20.65	24.53	24.47	24.72	22.08
600	0.22	20.55	24.55	24.43	24.74	21.94
650	0.22	20.45	24.56	24.54	24.73	21.74
700	0.23	20.34	24.25	24.36	24.59	21.50
750	0.24	20.22	23.73	24.07	24.37	21.27
800	0.25	20.08	23.43	23.85	24.18	20.95
850	0.26	19.95	22.79	23.41	23.79	20.66
900	0.27	19.81	22.20	22.97	23.33	20.31
950	0.28	19.66	21.68	22.50	22.84	19.96
1000	0.30	19.52	21.04	21.94	22.29	19.58
1050	0.31	19.39	20.41	21.51	21.73	19.18
1100	0.33	19.25	19.78	20.86	21.14	18.82
1125	0.34	19.18	19.52	20.62	20.87	18.60
1150	0.34	19.11	19.23	20.37	20.59	18.38
1175	0.35	19.03	18.94	20.09	20.28	18.20
1200	0.36	18.96	18.64	19.78	19.97	18.03
1225	0.37	18.88	18.35	19.50	19.67	17.82
1250	0.38	18.80	18.10	19.23	19.40	17.59
1300	0.41	18.66	17.52	18.61	18.81	17.21
1400	0.46	18.36	16.31	17.46	17.53	16.45
1500	0.53	18.04	15.11	16.21	16.25	15.71



Directional Coupler

Typical Performance Curves

ADC-20-132+



P.O. Box 350166, Brooklyn, New York 11235-0003 (718) 934-4500 • Fax (718) 332-4661 For detailed performance specs & shopping online see Mini-Circuits web site
 The Design Engineers Search Engine Provides ACTUAL Data Instantly From MINI-CIRCUITS At: www.minicircuits.com



IF/RF MICROWAVE COMPONENTS

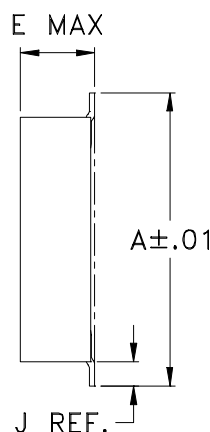
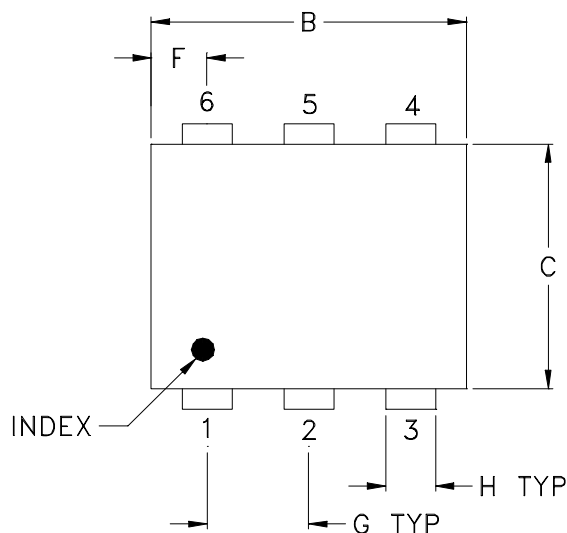
REV. OR
 ADC-20-132+
 2/24/2016
 Page 1 of 1

Case Style

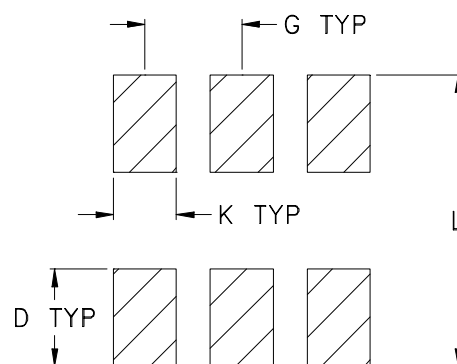
CD

CD541
CD542
CD636
CD637

Outline Dimensions



PCB Land Pattern



Suggested Layout,
Tolerance to be within $\pm .002$

CASE#	A	B	C	D	E	F	G	H	J	K	L	WT, GRAM
CD541					.082 (2.08)							.15
CD542	.272 (6.91)	.310 (7.87)	.220 (5.58)	.100 (2.54)	.112 (2.84)	.055 (1.40)	.100 (2.54)	.030 (0.76)	.026 (0.66)	.065 (1.65)	.300 (7.62)	.20
CD636					.162 (4.11)							.25
CD637					.206 (5.23)							.40

Dimensions are in inches (mm). Tolerances: 2 Pl. $\pm .01$; 3 Pl. $\pm .005$

Notes:

- Case material: Plastic.
- Termination finish:
 - For RoHS Case Styles: Tin plate over Nickel plate. All models, (+) suffix.
 - For RoHS-5 Case Styles: Tin-Lead plate. All models, no (+) suffix.

Mini-Circuits®

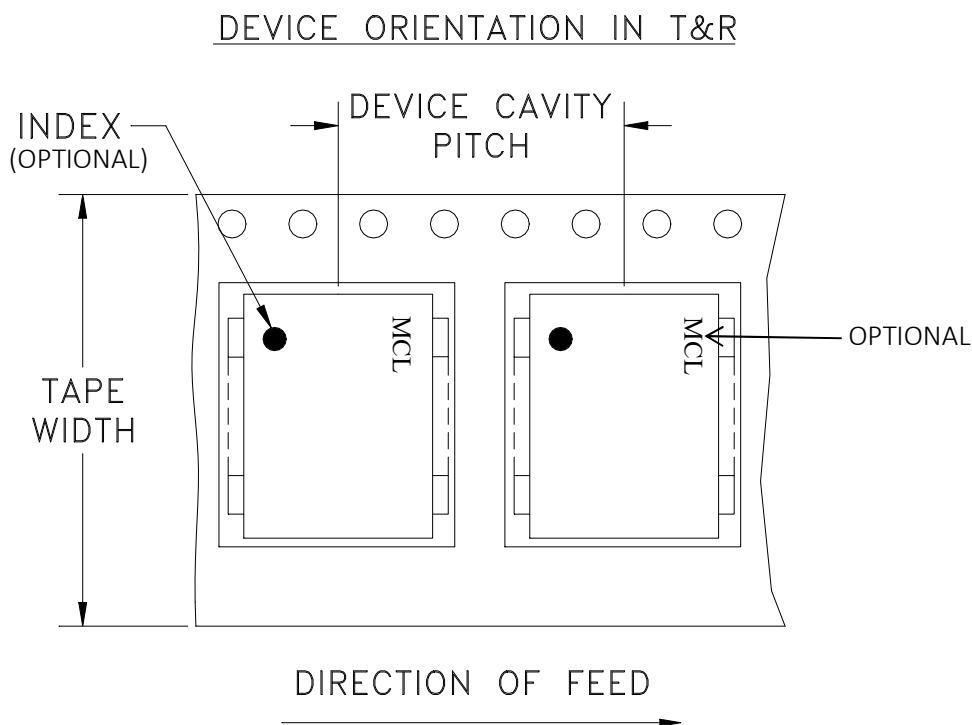
INTERNET <http://www.minicircuits.com>

P.O. Box 350166, Brooklyn, New York 11235-0003 (718) 934-4500 Fax (718) 332-4661

Distribution Centers NORTH AMERICA 800-654-7949 • 417-335-5935 • Fax 417-335-5945 • EUROPE 44-1252-832600 • Fax 44-1252-837010

Mini-Circuits ISO 9001 & ISO 14001 Certified

Tape & Reel Packaging TR-F34



Tape Width, mm	Device Cavity Pitch, mm	Reel Size, inches	Devices per Reel see note	
16	12	7	Small quantity standard (see note)	20
				50
				100
				200
		13	Standard	500
				1000

Note: Availability of small reel quantity varies by model.
Refer to pricing and availability on individual model dashboard.

Mini-Circuits carrier tape materials provide protection from ESD (Electro-Static Discharge) during handling and transportation. Tapes are static dissipative and comply with industry standards EIA-481/EIA-541.

Go to: www.minicircuits.com/pages/pdfs/tape.pdf



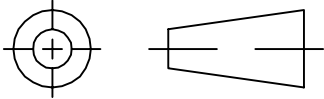
INTERNET <http://www.minicircuits.com>

P.O. Box 350166, Brooklyn, New York 11235-0003 (718) 934-4500 Fax (718) 332-4661

Distribution Centers NORTH AMERICA 800-654-7949 • 417-335-5935 • Fax 417-335-5945 • EUROPE 44-1252-832600 • Fax 44-1252-837010

Mini-Circuits ISO 9001 & ISO 14001 Certified

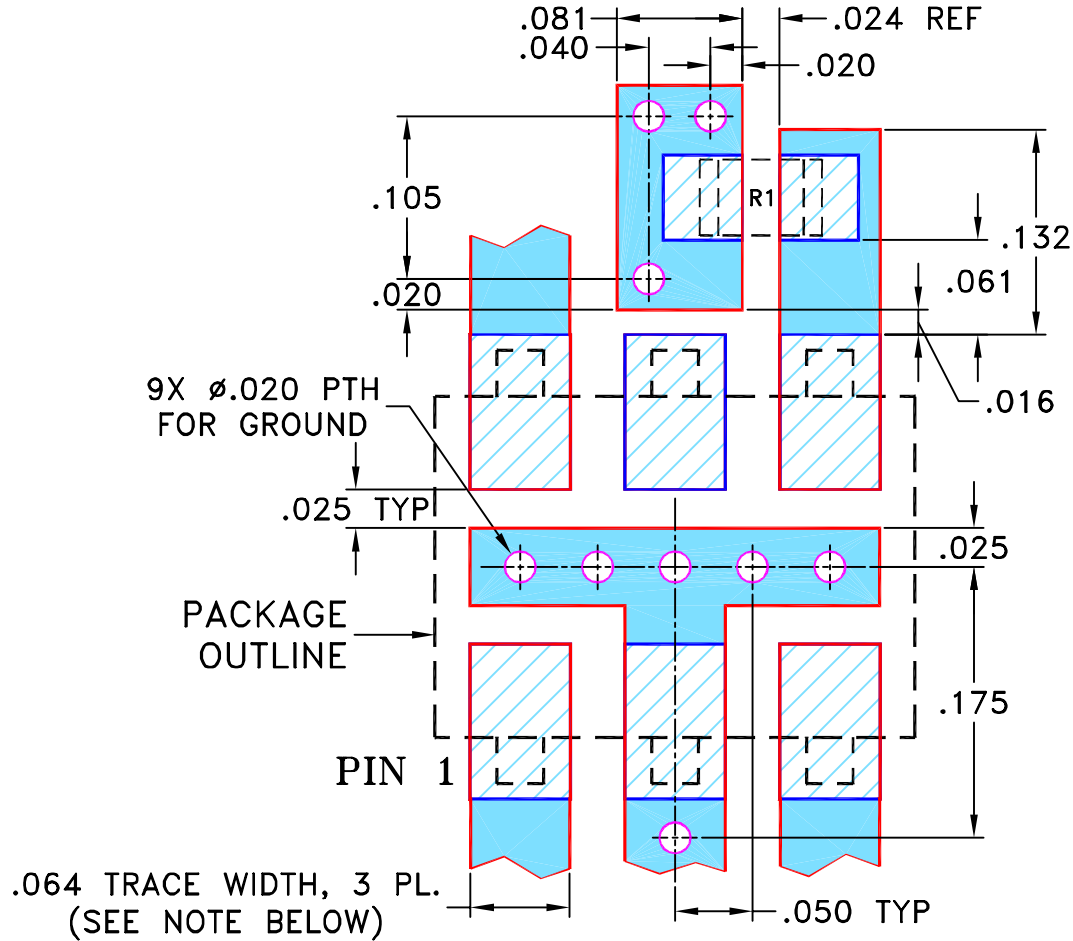
THIRD ANGLE PROJECTION



REVISIONS

REV	ECN No.	DESCRIPTION	DATE	DR	AUTH
OR	M82272	NEW RELEASE	08/05/02	MMG	DJ
A	M102713	ADDED NOTE 2 & "...WITH SMOBC"	01/17/06	MMG	IL

SUGGESTED MOUNTING CONFIGURATION
FOR CD542 CASE STYLE "kd" PIN CONNECTION



RESISTOR R1: 49.9 Ohm, 0805 SIZE.

- NOTES: 1. TRACE WIDTH IS SHOWN FOR ROGERS R04350B WITH DIELECTRIC THICKNESS .030" ± .002"; COPPER: 1/2 OZ. EACH SIDE. FOR OTHER MATERIALS TRACE WIDTH MAY NEED TO BE MODIFIED.
2. BOTTOM SIDE OF THE PCB IS CONTINUOUS GROUND PLANE.



DENOTES PCB COPPER LAYOUT WITH SMOBC (SOLDER MASK OVER BARE COPPER)



DENOTES COPPER LAND PATTERN FREE OF SOLDER MASK

UNLESS OTHERWISE SPECIFIED	INITIALS	DATE
DIMENSIONS ARE IN INCHES	DRAWN MMG	07/23/02
TOLERANCES ON:	CHECKED IC	08/01/02
2 PL DECIMALS ±	APPROVED DJ	08/05/02
3 PL DECIMALS ± .005		
ANGLES ±		
FRACTIONS ±		



Mini-Circuits®

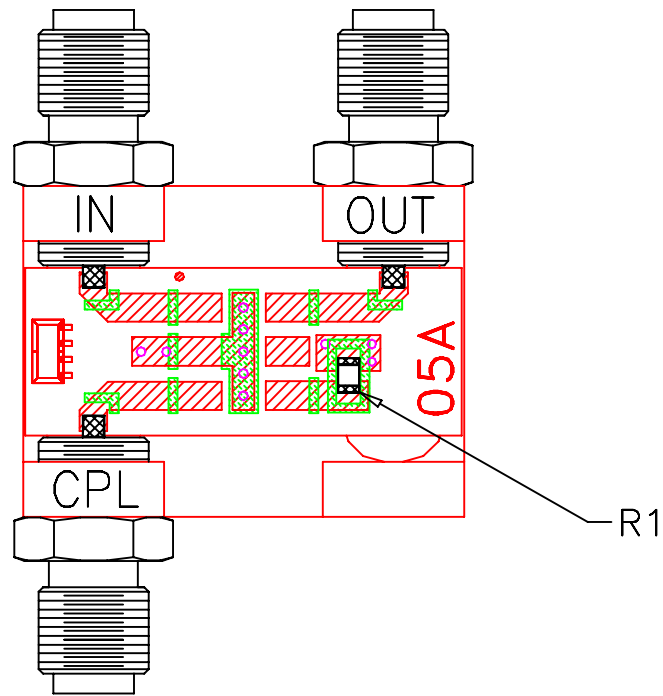
13 Neptune Avenue
Brooklyn NY 11235

PL, kd, CD542, ADC, TB-05

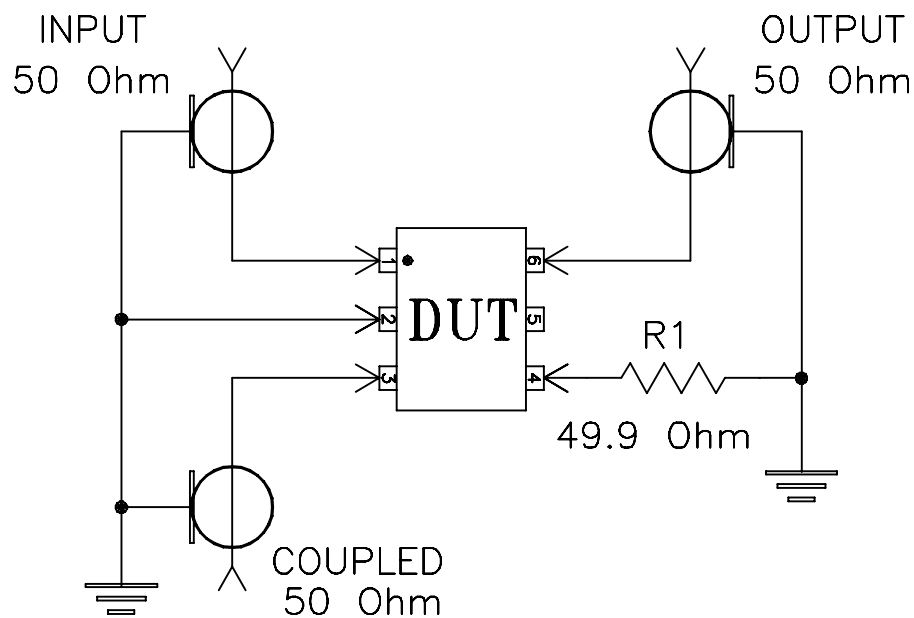
Mini-Circuits®
THIS DOCUMENT AND ITS CONTENTS ARE THE PROPERTY OF MINI-CIRCUITS. EXCEPT FOR USE EXPRESSLY GRANTED, IN WRITING, TO ITS VENDORS, VENDEE AND THE UNITED STATES GOVERNMENT, MINI-CIRCUITS RESERVES ALL PROPRIETARY DESIGN, USE, MANUFACTURING AND REPRODUCTION RIGHTS THERETO. THESE CONTENTS SHALL NOT BE USED, DUPLICATED OR DISCLOSED TO ANY OUTSIDE PARTY, IN WHOLE OR IN PART, WITHOUT WRITTEN PERMISSION OF MINI-CIRCUITS.
ASHEETA1.DWG REV:A DATE:01/12/95

SIZE	CODE IDENT	DRAWING NO:	REV:
A	15542	98-PL-095	A
FILE:	98PL095	SCALE:	8:1
		SHEET:	1 OF 1

Evaluation Board and Circuit




TB-05



Schematic Diagram

Notes:

1. SMA Female connectors.
2. PCB Material: Rogers R04350 or equivalent, Dielectric Constant=3.5, Thickness=.030 inch.

 Mini-Circuits®



All Mini-Circuits products are manufactured under exacting quality assurance and control standards, and are capable of meeting published specifications after being subjected to any or all of the following physical and environmental test.

Specification	Test/Inspection Condition	Reference/Spec
Operating Temperature	-40° to 85°C Ambient Environment	Individual Model Data Sheet
Storage Temperature	-55° to 100° C Ambient Environment	Individual Model Data Sheet
Humidity	90 to 95% RH, 240 hours, 50°C	MIL-STD-202, Method 103, Condition A, Except 50°C and end-point electrical test done within 12 hours
Thermal Shock	-55° to 100°C, 100 cycles	MIL-STD-202, Method 107, Condition A-3, except +100°C
Solder Reflow Heat	Sn-Pb Eutetic Process: 225°C peak Pb-Free Process 245° - 250°C peak	J-STD-020, Table 4-1, 4-2 and 5-2, Figure 5-1
Solderability	10X Magnification	J-STD-002, 95% Coverage
Vibration (High Frequency)	20g peak, 10-2000 Hz, 12 times in each of three perpendicular directions (total 36)	MIL-STD-202, Method 204, Condition D
Mechanical Shock	50g, 11 ms, 1/2-sine, 18 shocks: 3 each direction, each of 3 axes	MIL-STD-202, Method 213, Condition A
Marking Resistance to Solvents	Isopropyl alcohol + mineral spirits at 25°C; terpene defluxer at 25°C; distilled water + proylene glycol monomethyl ether + monoethanolamine at 63°C to 70°C	MIL-STD-202, Method 215