



COAXIAL

Adapter

35F-35F50+

50Ω DC to 34 GHz 3.5mm-F to 3.5mm-F

FEATURES

- Flat response
- Excellent VSWR, 1.05 typ. up to 18 GHz and 1.08 typ. up to 34 GHz
- Low cost adapters, available from stock
- Rugged stainless steel body, passivated
- 3.5 mm connector mates with SMA, K, 2.92 mm connectors

APPLICATIONS

- Interconnection of RF cable and equipment



Generic photo used for illustration purposes only

Model No.	35F-35F50+
Case Style	DJ1733
Connectors	3.5 mm-F to 3.5 mm-F

+RoHS Compliant

The +Suffix identifies RoHS Compliance. See our website for methodologies and qualifications

ELECTRICAL SPECIFICATIONS AT 25°C

Parameter	Condition (GHz)	Min.	Typ.	Max.	Units
Frequency Range	-	DC	—	34	GHz
Insertion Loss	DC - 34	—	0.13	—	dB
VSWR	DC - 18	—	1.05	1.25	:1
	DC - 26.5	—	1.07	1.25	
	DC - 34	—	1.08	1.25	

ABSOLUTE MAXIMUM RATINGS

Parameter	Ratings
Operating Temperature	-55°C to +100°C
Storage Temperature	-55°C to +100°C

Permanent damage may occur if any of these limits are exceeded.



COAXIAL

Adapter

35F-35F50+

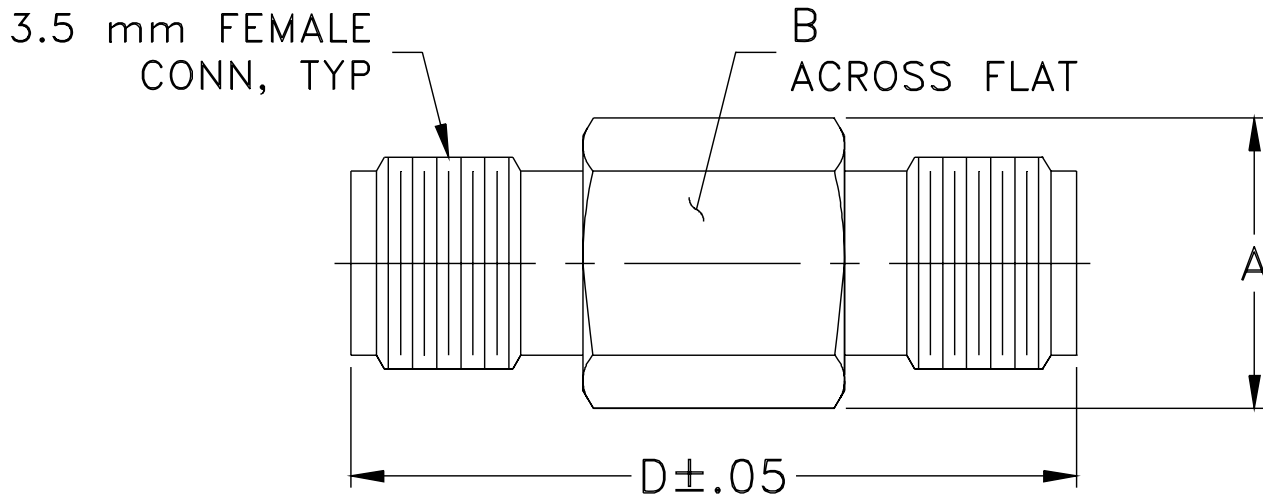
Mini-Circuits

50Ω DC to 34 GHz 3.5mm-F to 3.5mm-F

COAXIAL CONNECTIONS

Connector 1	3.5 mm-F
Connector 2	3.5 mm-F

OUTLINE DRAWING



OUTLINE DIMENSIONS (Inches/mm)

A	B	C	D	E	wt
.307	.274	--	.772	--	grams
7.80	6.96	--	19.61	--	3.0



COAXIAL

Adapter

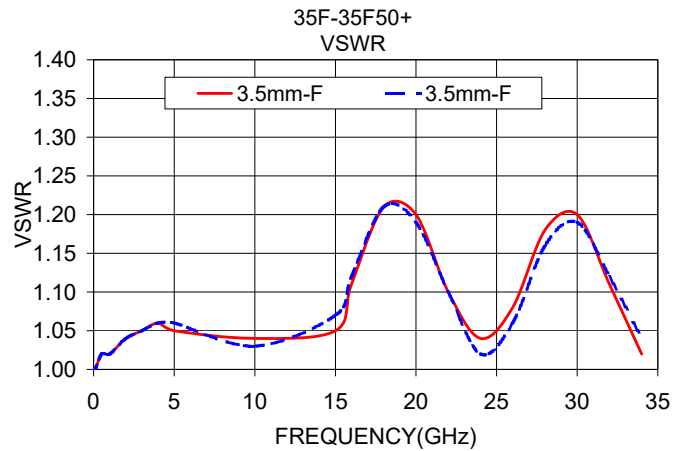
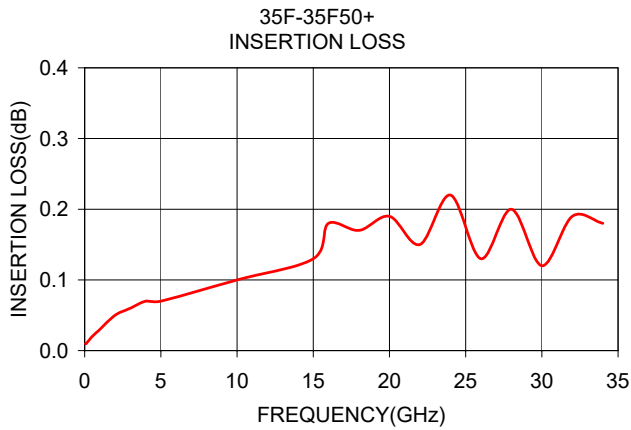
35F-35F50+

Mini-Circuits

50Ω DC to 34 GHz 3.5mm-F to 3.5mm-F

TYPICAL PERFORMANCE DATA AND CHARTS

Frequency (GHz)	Insertion Loss (dB)	VSWR (:1)	
		3.5 mm-Female	3.5 mm-Female
0.05	0.01	1.00	1.00
0.1	0.01	1.00	1.00
0.5	0.02	1.02	1.02
1	0.03	1.02	1.02
2	0.05	1.04	1.04
3	0.06	1.05	1.05
4	0.07	1.06	1.06
5	0.07	1.06	1.05
10	0.10	1.03	1.04
15	0.13	1.07	1.05
16	0.18	1.12	1.11
18	0.17	1.21	1.21
20	0.19	1.19	1.20
22	0.15	1.10	1.10
24	0.22	1.02	1.04
26	0.13	1.06	1.08
28	0.20	1.16	1.18
30	0.12	1.19	1.20
32	0.19	1.12	1.11
34	0.18	1.04	1.02



NOTES

- A. Performance and quality attributes and conditions not expressly stated in this specification document are intended to be excluded and do not form a part of this specification document.
- B. Electrical specifications and performance data contained in this specification document are based on Mini-Circuit's applicable established test performance criteria and measurement instructions.
- C. The parts covered by this specification document are subject to Mini-Circuits standard limited warranty and terms and conditions (collectively, "Standard Terms"); Purchasers of this part are entitled to the rights and benefits contained therein. For a full statement of the standard terms and the exclusive rights and remedies thereunder, please visit Mini-Circuits' website at www.minicircuits.com/terms/viewterm.html



Adapter, 3.5mm Female to 3.5mm Female

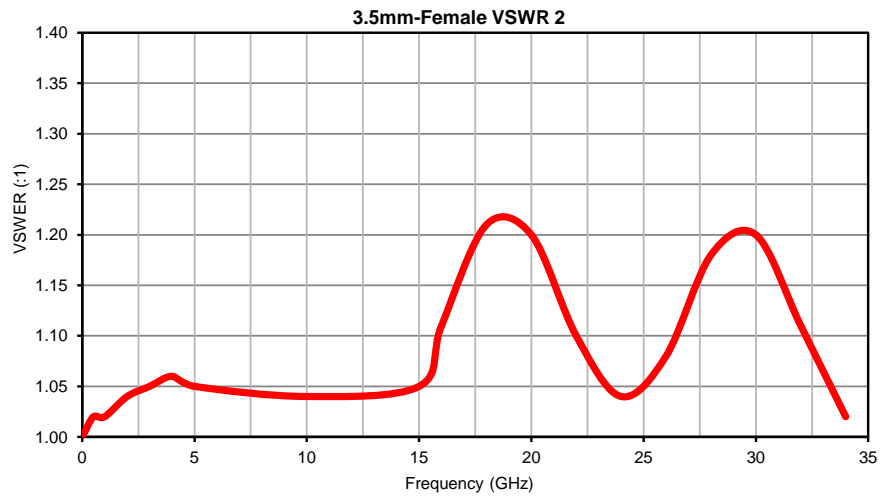
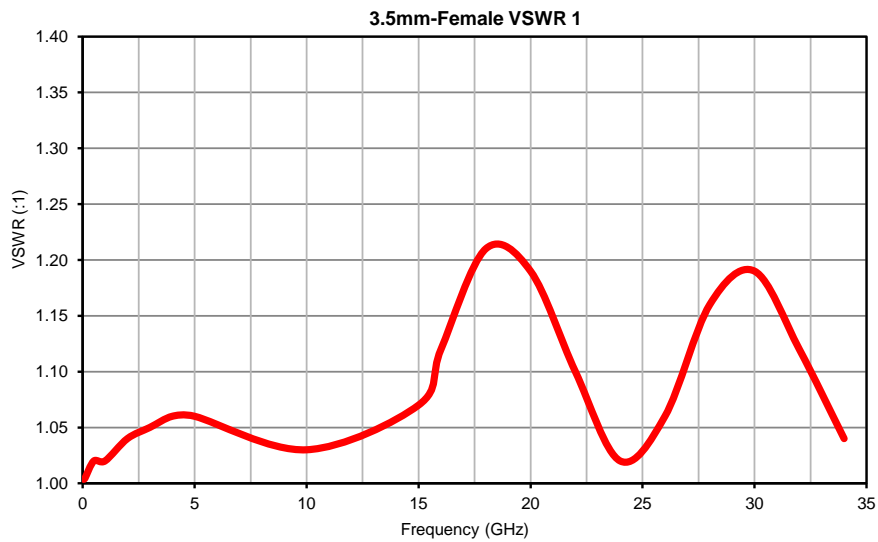
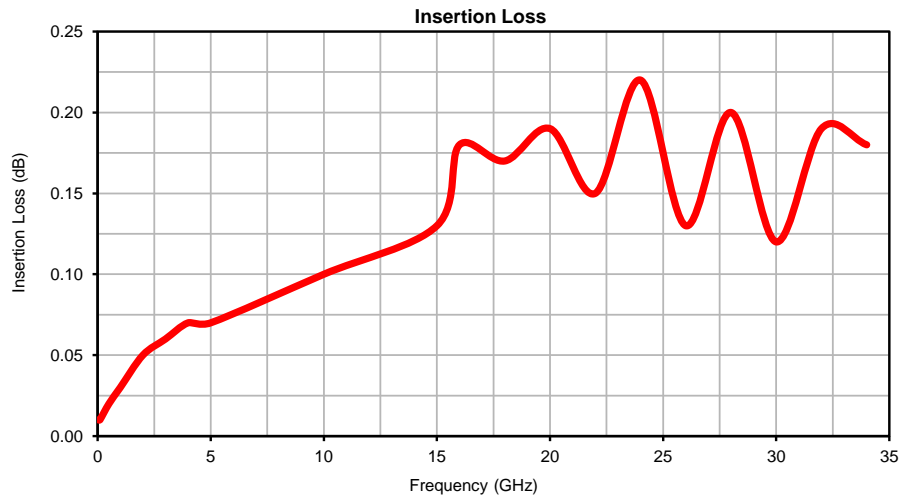
35F-35F50+

Typical Performance Data

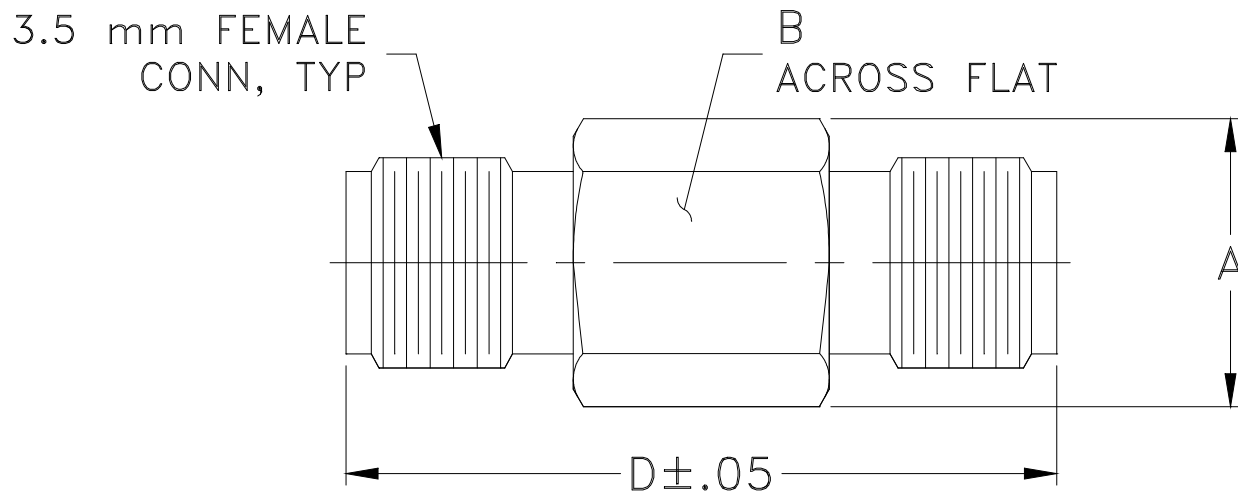
FREQUENCY (GHz)	INSERTION LOSS (dB)	3.5mm-FEMALE VSWR 1 (:1)	3.5mm-FEMALE VSWR 2 (:1)
0.05	0.01	1.00	1.00
0.10	0.01	1.00	1.00
0.50	0.02	1.02	1.02
1.00	0.03	1.02	1.02
2.00	0.05	1.04	1.04
3.00	0.06	1.05	1.05
4.00	0.07	1.06	1.06
5.00	0.07	1.06	1.05
10.0	0.10	1.03	1.04
15.0	0.13	1.07	1.05
16.0	0.18	1.12	1.11
18.0	0.17	1.21	1.21
20.0	0.19	1.19	1.20
22.0	0.15	1.10	1.10
24.0	0.22	1.02	1.04
26.0	0.13	1.06	1.08
28.0	0.20	1.16	1.18
30.0	0.12	1.19	1.20
32.0	0.19	1.12	1.11
34.0	0.18	1.04	1.02



Typical Performance Curves



Outline Dimensions



CASE#	A	B	C	D	E	WT. GRAM
DJ1733	.307 (7.80)	.274 (6.95)	--	.772 (19.61)	--	3.0

Dimensions are in inches (mm). Tolerances: 2 Pl. $\pm .03$; 3 Pl. $\pm .015$

Note:

1. Case material: Stainless steel.
2. Finish: Passivation.

All Mini-Circuits products are manufactured under exacting quality assurance and control standards, and are capable of meeting published specifications after being subjected to any or all of the following physical and environmental test.

Specification	Test/Inspection Condition	Reference/Spec
Operating Temperature	-55° to 100° C or -55° to 85° C Ambient Environment	Individual Model Data Sheet
Storage Temperature	-55° to 100° C Ambient Environment	Individual Model Data Sheet
Thermal Shock	-55° to 100°C, 100 cycles	MIL-STD-202, Method 107, condition B -3, except over -55° to 100°C
Connector Durability	500 mating/unmating cycles	MIL-PRF-39012E, PARAGRAPH 4.6.12
Drop Test	3' height, 3 times	