

High Pass Filter

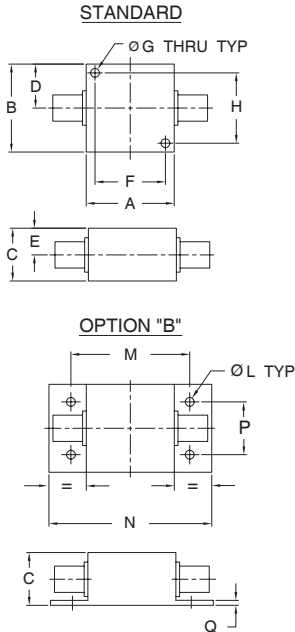
50Ω 2500 to 6800 MHz

Maximum Ratings

Operating Temperature	-40°C to 85°C
Storage Temperature	-55°C to 100°C
RF Power Input	0.5W at 25°C

Permanent damage may occur if any of these limits are exceeded.

Outline Drawing



Outline Dimensions (inch/mm)

A	B	C	D	E	F	G
1.25	1.25	.75	.63	.38	1.000	.125
31.75	31.75	19.05	16.00	9.65	25.40	3.18

H	L	M	N	P	Q	wt.
1.000	.125	1.688	2.18	.75	.06	grams
25.40	3.18	42.88	55.37	19.05	1.52	70

Features

- Wideband, 2500 to 6800 MHz
- Good VSWR, 1.3:1 Typ @ Passband
- High Rejection
- Rugged shielded case

Applications

- Military communications
- Harmonic rejection
- Receivers / Transmitters
- Lab Use

ZFHP-2100+



CASE STYLE: H16

Connectors	Model
SMA-FEMALE BRACKET (OPTION "B")	ZFHP-2100-S+

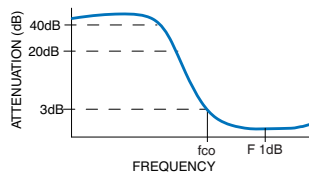
+RoHS Compliant

The +Suffix identifies RoHS Compliance. See our web site for RoHS Compliance methodologies and qualifications

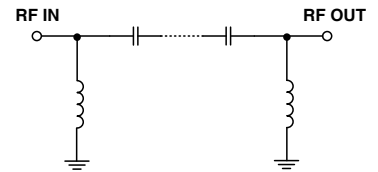
High Pass Filter Electrical Specifications (T_{AMB} = 25°C)

STOPBAND (MHz)		f _{co} , MHz Nom.	PASSBAND (MHz)	VSWR (:1)	
(Loss > 40dB)	(Loss > 20dB)	(Loss 3dB)	(Loss < 1dB)	Stopband Typ.	Passband Typ.
DC - 900	DC - 1925	2100	2500 - 6800	20	1.3

Typical Frequency Response

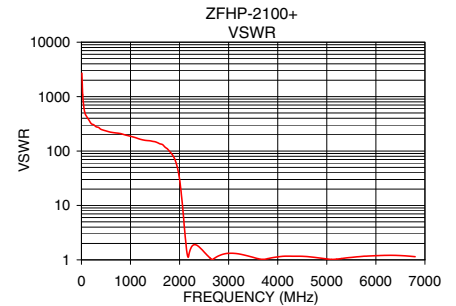
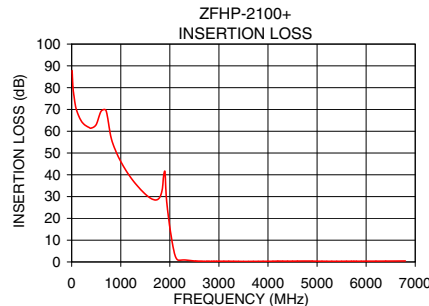


Functional Schematic



Typical Performance Data at 25°C

Frequency (MHz)	Insertion Loss (dB)	VSWR (:1)
10.0	87.84	2697.13
50.0	75.72	632.17
100.0	69.65	440.38
200.0	64.50	318.68
400.0	61.46	250.19
900.0	50.86	196.78
1100.0	42.20	176.49
1925.0	30.98	62.26
1950.0	24.73	51.93
2025.0	12.23	20.12
2075.0	5.89	6.87
2100.0	3.49	3.78
2125.0	1.90	2.16
2300.0	0.90	1.91
2500.0	0.46	1.40
3000.0	0.34	1.32
4000.0	0.32	1.13
5000.0	0.35	1.04
6800.0	0.45	1.14



Notes

- Performance and quality attributes and conditions not expressly stated in this specification document are intended to be excluded and do not form a part of this specification document.
- Electrical specifications and performance data contained in this specification document are based on Mini-Circuit's applicable established test performance criteria and measurement instructions.
- The parts covered by this specification document are subject to Mini-Circuits standard limited warranty and terms and conditions (collectively, "Standard Terms"); Purchasers of this part are entitled to the rights and benefits contained therein. For a full statement of the Standard Terms and the exclusive rights and remedies thereunder, please visit Mini-Circuits' website at www.minicircuits.com/MCLStore/terms.jsp

