

Coaxial Bandpass Filter

50Ω 69 to 71 MHz

ZFBP-70+



CASE STYLE: H16

Connectors Model

SMA-FEMALE ZFBP-70-S+
BRACKET (OPTION "B")

+RoHS Compliant

The +Suffix identifies RoHS Compliance. See our web site for RoHS Compliance methodologies and qualifications

Maximum Ratings

Operating Temperature -40°C to 85°C

Storage Temperature -55°C to 100°C

RF Power Input 0.5W at 25°C

Permanent damage may occur if any of these limits are exceeded.

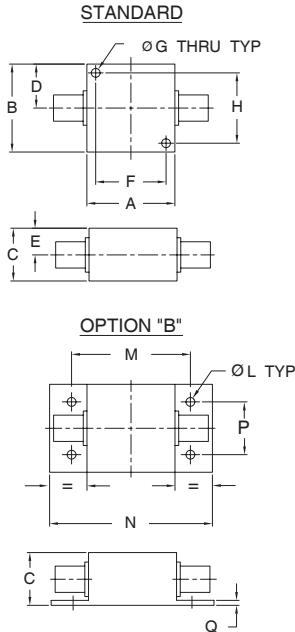
Features

- Good VSWR, 1.25:1 Typ @ Passband
- Excellent Rejection in the Stopband

Applications

- IF Signal Processing
- High Rejection Application
- Wire-Line Broadband Access
- Lab Use

Outline Drawing



Outline Dimensions (inch/mm)

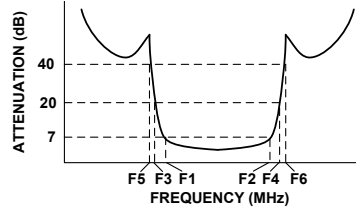
| A | B | C | D | E | F | G |
|-------|-------|-------|-------|------|-------|------|
| 1.25 | 1.25 | .75 | .63 | .38 | 1.000 | .125 |
| 31.75 | 31.75 | 19.05 | 16.00 | 9.65 | 25.40 | 3.18 |

| H | L | M | N | P | Q | wt. |
|-------|------|-------|-------|-------|------|-------|
| 1.000 | .125 | 1.688 | 2.18 | .75 | .06 | grams |
| 25.40 | 3.18 | 42.88 | 55.37 | 19.05 | 1.52 | 70 |

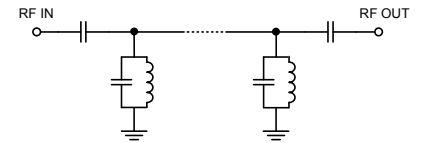
Bandpass Filter Electrical Specifications (T_{AMB} = 25°C)

| CENTER FREQ. (MHz) | PASSBAND (MHz) (Loss < 7dB) F1 - F2 | STOPBANDS (MHz) | | | | VSWR (:1) | |
|--------------------------|--|-----------------|----|-------------|-----------|------------------|------------------|
| | | Loss > 20dB | | Loss > 40dB | | Passband Max. | Stopband Typ. |
| | | F3 | F4 | F5 | F6 | | |
| 70 | 69 - 71 | 66 | 75 | 64 | 78 - 1000 | 1.35 | 18 |

Typical Frequency Response

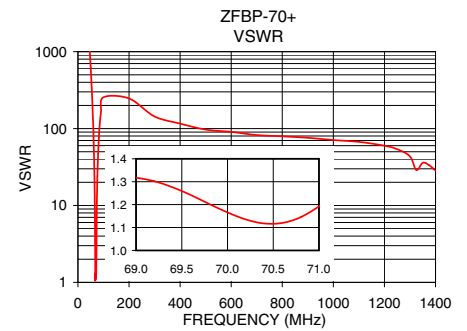
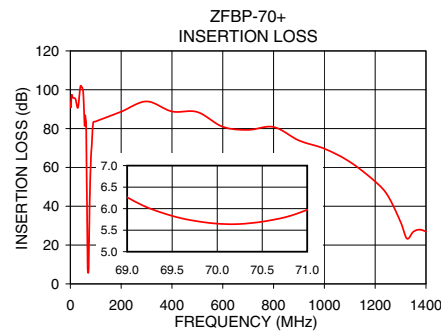


Functional Schematic



Typical Performance Data at 25°C

| Frequency (MHz) | Insertion Loss (dB) | VSWR (:1) |
|-----------------|---------------------|-----------|
| 0.5 | 90.82 | 3501.66 |
| 5.0 | 97.22 | 2322.94 |
| 30.0 | 90.79 | 4431.70 |
| 50.0 | 99.47 | 614.61 |
| 62.0 | 82.86 | 59.74 |
| 64.0 | 56.94 | 29.61 |
| 66.0 | 33.57 | 9.80 |
| 66.5 | 26.89 | 6.41 |
| 67.0 | 19.89 | 3.71 |
| 68.0 | 9.14 | 1.06 |
| 69.0 | 6.26 | 1.32 |
| 70.0 | 5.65 | 1.17 |
| 71.0 | 5.97 | 1.19 |
| 72.4 | 9.77 | 2.32 |
| 74.0 | 25.39 | 9.47 |
| 76.0 | 41.61 | 22.55 |
| 78.0 | 52.97 | 38.72 |
| 100.0 | 83.70 | 255.36 |
| 500.0 | 88.51 | 96.95 |
| 1000.0 | 69.65 | 70.88 |
| 1400.0 | 26.99 | 28.37 |



Notes

- Performance and quality attributes and conditions not expressly stated in this specification document are intended to be excluded and do not form a part of this specification document.
- Electrical specifications and performance data contained in this specification document are based on Mini-Circuits' applicable established test performance criteria and measurement instructions.
- The parts covered by this specification document are subject to Mini-Circuits standard limited warranty and terms and conditions (collectively, "Standard Terms"); Purchasers of this part are entitled to the rights and benefits contained therein. For a full statement of the Standard Terms and the exclusive rights and remedies thereunder, please visit Mini-Circuits' website at www.minicircuits.com/MCLStore/terms.jsp

