

Plug-In

Frequency Mixer

Level 7 (LO Power +7 dBm) 750 to 2400 MHz

TFM-2400+



Generic photo used for illustration purposes only

CASE STYLE: B13

+RoHS Compliant

The +Suffix identifies RoHS Compliance. See our web site for RoHS Compliance methodologies and qualifications

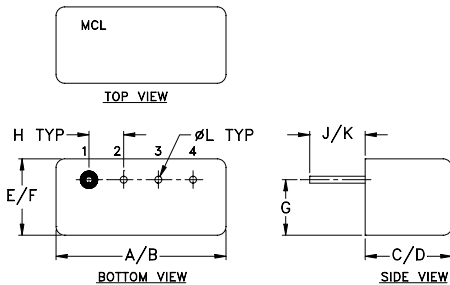
Maximum Ratings

Operating Temperature	-55°C to 100°C
Storage Temperature	-55°C to 100°C
RF Power	50mW
IF Current	40mA
Permanent damage may occur if any of these limits are exceeded.	

Pin Connections

LO	1
RF	4
IF	2
GROUND	3
CASE GROUND	3

Outline Drawing



Outline Dimensions (inch/mm)

A	B	C	D	E	F
.480	.500	.390	.405	.210	.230
12.19	12.70	9.91	10.29	5.33	5.84
G	H	J	K	L	wt
.16	.100	.14	.20	.020	grams
4.06	2.54	3.56	5.08	0.51	2.3

Features

- low conversion loss, 6.65 dB typ.
- wideband, 700 to 2400 MHz
- rugged welded construction
- hermetically sealed

Applications

- base station
- cellular
- DCS, PCS
- communications systems

Electrical Specifications

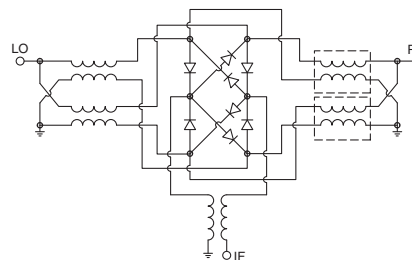
FREQUENCY (MHz)	CONVERSION LOSS (dB)			LO-RF ISOLATION (dB)		LO-IF ISOLATION (dB)	
	LO/RF	IF		Typ.	Min.	Typ.	Min.
750-2400	DC-400		\bar{X} σ Max.				
				30	20	30	10

1 dB COMP.: +1 dBm typ.

Typical Performance Data

Frequency (MHz)		Conversion Loss (dB)	Isolation L-R (dB)	Isolation L-I (dB)	VSWR RF Port (:1)	VSWR LO Port (:1)
RF	LO	LO +7dBm	LO +7dBm	LO +7dBm	LO +7dBm	LO +7dBm
500.00	530.00	5.45	54.10	25.42	1.90	2.44
650.00	680.00	5.24	46.72	24.17	1.19	2.42
800.00	830.00	5.18	50.53	24.04	1.21	2.60
950.00	980.00	5.34	39.92	22.92	1.56	2.84
1000.00	1030.00	5.61	38.68	21.93	1.74	2.92
1100.00	1070.00	6.52	35.67	19.02	1.90	2.94
1150.00	1120.00	6.54	35.25	17.69	2.78	2.95
1250.00	1220.00	6.21	35.47	16.09	3.17	2.82
1350.00	1320.00	6.10	38.09	15.24	3.20	2.88
1500.00	1470.00	6.10	40.51	17.24	3.59	3.05
1650.00	1620.00	6.97	39.61	20.00	3.82	3.00
1750.00	1720.00	7.73	40.56	21.79	4.92	2.60
1800.00	1770.00	7.87	41.20	23.27	5.75	2.00
1950.00	1920.00	7.91	37.08	25.03	6.73	1.71
2000.00	1970.00	7.83	36.28	24.82	6.63	1.59
2150.00	2120.00	7.95	34.61	21.63	7.22	1.54
2300.00	2270.00	8.12	34.07	19.31	7.66	1.68
2400.00	2370.00	8.32	33.85	18.30	8.43	2.03
2450.00	2420.00	7.93	33.63	17.81	8.60	2.45
2500.00	2470.00	7.98	34.92	18.95	8.16	2.65

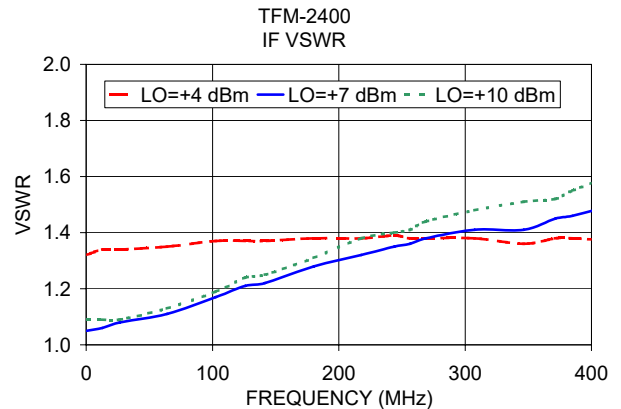
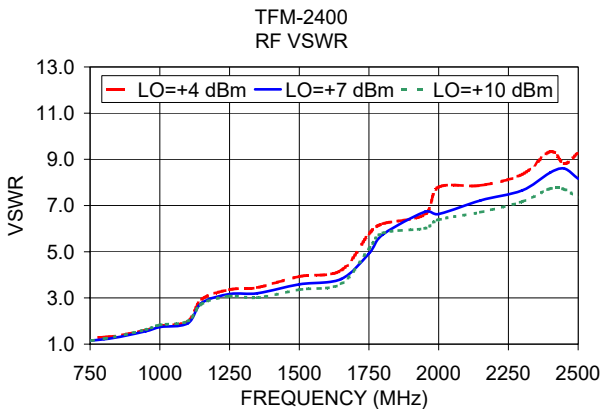
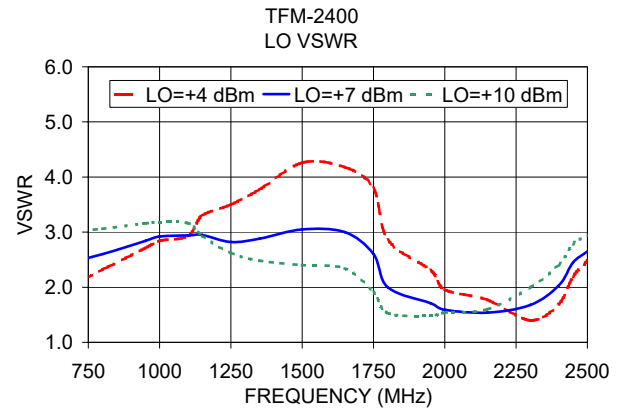
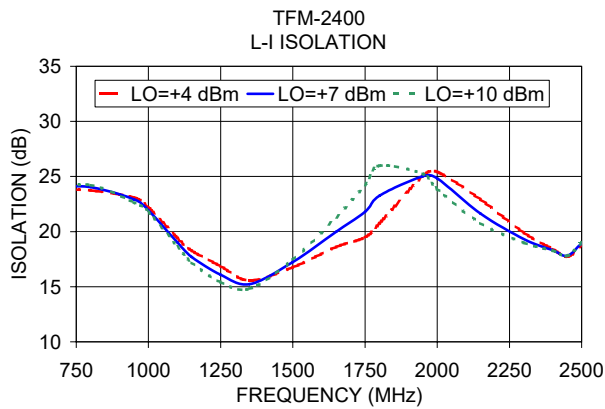
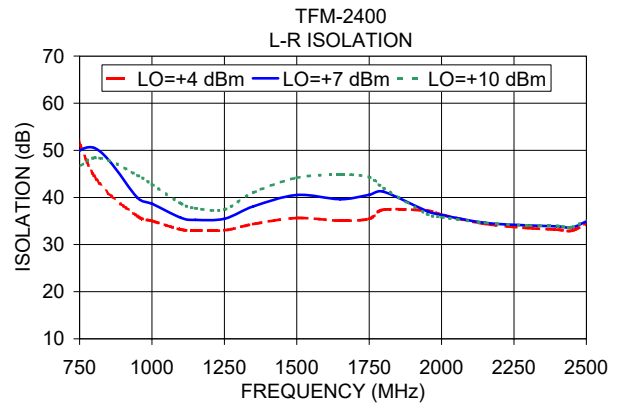
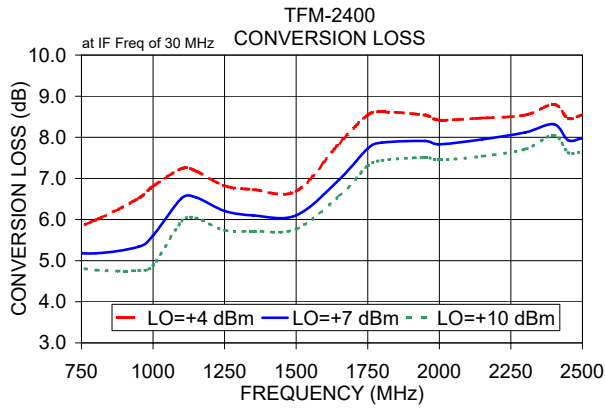
Electrical Schematic



Notes

- Performance and quality attributes and conditions not expressly stated in this specification document are intended to be excluded and do not form a part of this specification document.
- Electrical specifications and performance data contained in this specification document are based on Mini-Circuit's applicable established test performance criteria and measurement instructions.
- The parts covered by this specification document are subject to Mini-Circuits standard limited warranty and terms and conditions (collectively, "Standard Terms"); Purchasers of this part are entitled to the rights and benefits contained therein. For a full statement of the Standard Terms and the exclusive rights and remedies thereunder, please visit Mini-Circuits' website at www.minicircuits.com/MCLStore/terms.jsp





Notes

- A. Performance and quality attributes and conditions not expressly stated in this specification document are intended to be excluded and do not form a part of this specification document.
- B. Electrical specifications and performance data contained in this specification document are based on Mini-Circuit's applicable established test performance criteria and measurement instructions.
- C. The parts covered by this specification document are subject to Mini-Circuits standard limited warranty and terms and conditions (collectively, "Standard Terms"); Purchasers of this part are entitled to the rights and benefits contained therein. For a full statement of the Standard Terms and the exclusive rights and remedies thereunder, please visit Mini-Circuits' website at www.minicircuits.com/MCLStore/terms.jsp

