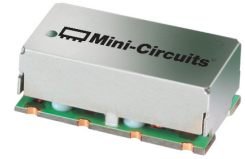


Low Pass Filter

50Ω DC to 5 MHz

SXLP-5+



Generic photo used for illustration purposes only
CASE STYLE: HF1139

Maximum Ratings

Operating Temperature	-40°C to 85°C
Storage Temperature	-55°C to 100°C
RF Power Input	0.5W Max.

Permanent damage may occur if any of these limits are exceeded.

Pin Connections

INPUT	1
OUTPUT	8
GROUND	2, 3, 4, 5, 6, 7

Features

- high rejection
- sharp cut-off
- shielded package
- aqueous washable
- low cost

Applications

- defense communications
- receivers / transmitters
- harmonic rejection

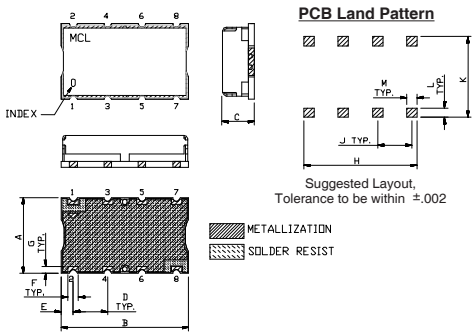
+RoHS Compliant

The +Suffix identifies RoHS Compliance. See our web site for RoHS Compliance methodologies and qualifications

Low Pass Filter Electrical Specifications (T_{AMB} = 25°C)

PASSBAND (MHz)	f _{co} , MHz Nom.	STOPBAND (MHz)		VSWR (:1)	
		(Loss > 20dB)	(Loss > 40dB)	Passband Typ.	Stopband Typ.
DC - 5 (Loss < 1dB)	5.8 (Loss 3dB)	8 - 11	11 - 600	1.7	18

Outline Drawing

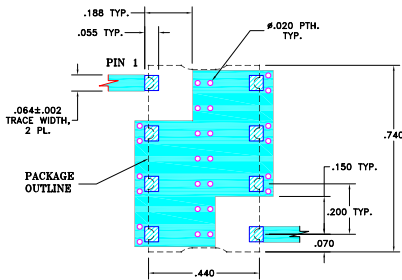


Outline Dimensions (inch/mm)

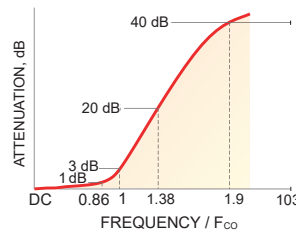
A	B	C	D	E	F	G	H	J	K	L	M	wt.
.44	.74	.27	.200	.07	.060	11.18	18.80	6.86	5.08	1.78	1.52	
						.040	.660	.200	.470	.055	.060	grams
						1.02	16.76	5.08	11.94	1.40	1.52	3.0

Note: Please refer to case style drawing for details

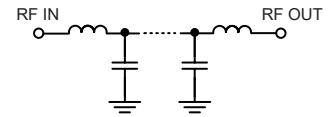
Demo Board MCL P/N: TB-368
Suggested PCB Layout (PL-230)



Typical Frequency Response

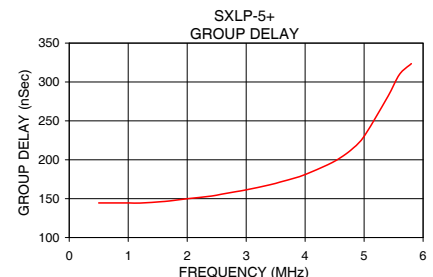
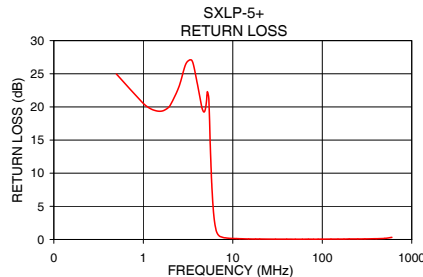
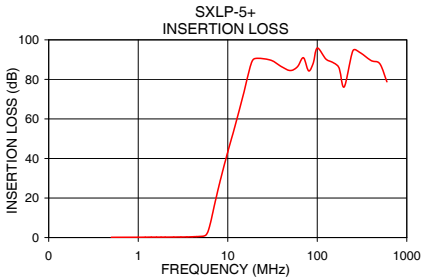


Functional Schematic



Typical Performance Data at 25°C

Frequency (MHz)	Insertion Loss (dB)		Return Loss (dB)	Frequency (MHz)	Group Delay (nSec)
	\bar{x}	σ			
0.5	0.14	0.01	24.96	0.5	144.47
1.0	0.19	0.01	20.52	1.0	144.53
3.0	0.28	0.01	26.53	1.2	144.36
5.0	0.59	0.02	20.05	1.6	146.31
5.6	1.03	0.08	14.37	1.8	148.02
5.8	1.75	0.15	8.91	2.0	149.91
6.0	3.12	0.26	5.25	2.4	153.25
6.2	5.18	0.37	3.04	2.8	158.65
6.5	9.03	0.47	1.42	3.0	161.28
7.2	18.17	0.54	0.46	3.4	167.81
8.0	26.98	0.55	0.27	3.6	171.89
11.0	50.31	0.79	0.13	3.8	175.98
15.0	72.81	3.70	0.08	4.0	181.00
20.0	85.05	5.02	0.07	4.4	194.27
40.0	83.17	2.38	0.05	4.8	214.04
80.0	84.66	1.98	0.04	5.0	230.15
100.0	92.67	3.38	0.05	5.4	281.00
400.0	87.76	6.66	0.11	5.6	309.78
600.0	77.91	3.06	0.32	5.8	323.56



Notes

- Performance and quality attributes and conditions not expressly stated in this specification document are intended to be excluded and do not form a part of this specification document.
- Electrical specifications and performance data contained in this specification document are based on Mini-Circuit's applicable established test performance criteria and measurement instructions.
- The parts covered by this specification document are subject to Mini-Circuits standard limited warranty and terms and conditions (collectively, "Standard Terms"); Purchasers of this part are entitled to the rights and benefits contained therein. For a full statement of the Standard Terms and the exclusive rights and remedies thereunder, please visit Mini-Circuits' website at www.minicircuits.com/MCLStore/terms.jsp

