

# Coaxial Bandpass Filter

## SIF-30+

50Ω Constant Impedance 25 to 35 MHz

### Maximum Ratings

Operating Temperature -55°C to 100°C

Storage Temperature -55°C to 100°C

RF Power Input 0.5W max.

Permanent damage may occur if any of these limits are exceeded.

### Features

- low VSWR in pass- and stopbands, 1.3:1 typ
- rugged shielded case
- custom fo models available

### Applications

- harmonic rejection
- lab use



Generic photo used for illustration purposes only

CASE STYLE: FF99

Connectors	Model
SMA	SIF-30+

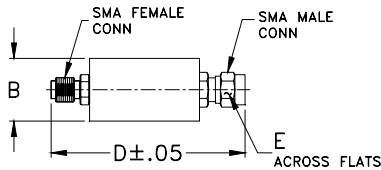
**+RoHS Compliant**

The +Suffix identifies RoHS Compliance. See our web site for RoHS Compliance methodologies and qualifications

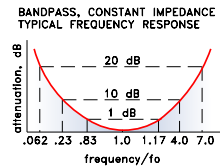
### Bandpass Filter Electrical Specifications

CENTER FREQ. (MHz)	PASSBAND (MHz) (loss < 1 dB)	STOPBANDS		VSWR, 1.3:1 Typ. TOTAL BAND (MHz)
		(loss > 10 dB) at MHz	(loss > 20 dB) at MHz	
30	25-35	7 & 120	1.9 & 210	DC-330

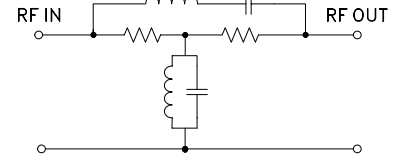
### Outline Drawing



### typical frequency response



### electrical schematic

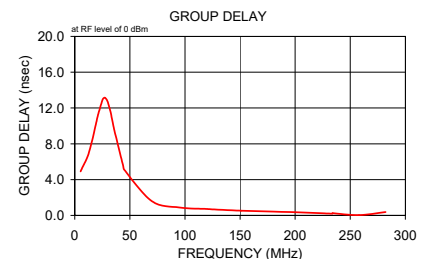
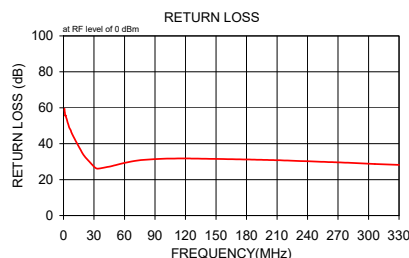


### Typical Performance Data

Frequency (MHz)	Insertion Loss (dB)		Return Loss (dB)	Frequency (MHz)	Group Delay (nsec)
	$\bar{x}$	$\sigma$			
1.0	30.97	0.1	59.5	5.3	4.911
1.2	29.52	0.1	57.9	7.0	5.392
1.4	28.29	0.1	57.1	8.0	5.612
1.5	27.23	0.1	56.5	12.0	6.685
1.7	26.25	0.1	56.0	16.0	8.448
1.9	25.40	0.1	55.5	20.0	10.612
2.0	24.95	0.1	55.8	21.0	11.190
5.3	16.33	0.1	49.5	25.0	12.864
7.0	13.88	0.1	47.5	26.0	13.075
8.0	12.64	0.1	46.0	27.3	13.145
12.0	8.66	0.1	41.6	28.8	12.980
16.0	5.59	0.1	37.4	30.0	12.639
20.0	3.10	0.1	33.5	31.0	12.237
26.0	0.66	0.1	29.6	32.3	11.647
28.7	0.26	0.1	28.0	33.8	10.775
31.0	0.25	0.1	26.7	35.0	10.047
33.7	0.55	0.1	26.1	36.0	9.449
44.0	2.99	0.1	27.1	44.0	5.471
45.0	3.25	0.1	27.2	45.0	5.093
70.0	8.33	0.1	30.4	70.0	1.581
95.0	11.72	0.1	31.5	95.0	0.883
120.0	14.33	0.1	31.8	120.0	0.718
121.0	14.43	0.1	31.8	121.0	0.703
180.0	19.47	0.1	31.2	150.8	0.518
210.0	21.85	0.1	30.8	180.3	0.428
211.0	21.93	0.1	30.8	210.0	0.305
258.6	26.09	0.2	29.8	233.8	0.196
282.4	28.52	0.2	29.3	234.0	0.244
306.2	31.23	0.3	28.7	258.0	0.031
330.0	34.20	0.4	28.2	282.0	0.378

### Outline Dimensions (inch/mm)

B	D	E	wt
.67	1.98	.312	grams
17.02	50.29	7.92	42.0



### Notes

- Performance and quality attributes and conditions not expressly stated in this specification document are intended to be excluded and do not form a part of this specification document.
- Electrical specifications and performance data contained in this specification document are based on Mini-Circuit's applicable established test performance criteria and measurement instructions.
- The parts covered by this specification document are subject to Mini-Circuits standard limited warranty and terms and conditions (collectively, "Standard Terms"); Purchasers of this part are entitled to the rights and benefits contained therein. For a full statement of the Standard Terms and the exclusive rights and remedies thereunder, please visit Mini-Circuits' website at [www.minicircuits.com/MCLStore/terms.jsp](http://www.minicircuits.com/MCLStore/terms.jsp)

