

Directional Coupler

PDC-10-21+

50Ω 1 to 1000 MHz

Maximum Ratings

Operating Temperature	-55°C to 100°C
Storage Temperature	-55°C to 100°C
Permanent damage may occur if any of these limits are exceeded.	

Pin Connections

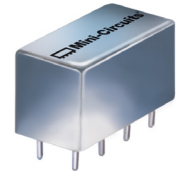
INPUT	1
OUTPUT	4
COUPLED	3
GROUND	2,5,7,8
CASE GROUND	2,5,7,8
NOT USED	6

Features

- wideband, 1 to 1000 MHz
- excellent directivity, 25 dB typ.
- rugged welded construction, hermetically sealed

Applications

- VHF/UHF
- cellular
- communications
- power levelling monitoring



CASE STYLE: A01
PRICE: Contact Sales Dept.

+RoHS Compliant
The +Suffix identifies RoHS Compliance. See our web site for RoHS Compliance methodologies and qualifications

Directional Coupler Electrical Specifications

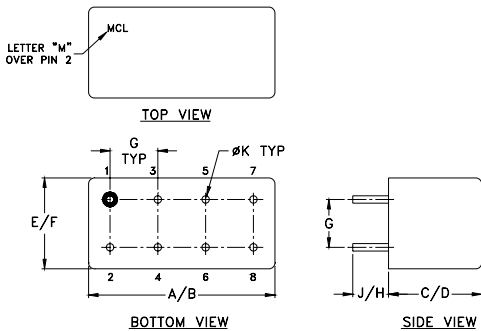
FREQ. (MHz)	COUPLING* (dB)		MAINLINE LOSS ¹ (dB)						DIRECTIVITY (dB)						VSWR (:1)	POWER INPUT, W		
	Nom.	Flatness	L		M		U		L		M		U			Typ.	Max.	Max.
			Typ.	Max.	Typ.	Max.	Typ.	Max.	Typ.	Min.	Typ.	Min.	Typ.	Min.				
1-1000	11.0±0.5	±0.5	1.2	1.7	1.2	1.7	1.6	2.0	40	30	25	20	25	20	1.3	1.0	2.0	

L = low range [f_L to $10 f_L$] M = mid range [$10 f_L$ to $f_U/2$] U = upper range [$f_U/2$ to f_U]
 1. Mainline loss includes theoretical power loss at coupled port.
 * Upper range coupling ±0.75 dB

Typical Performance Data

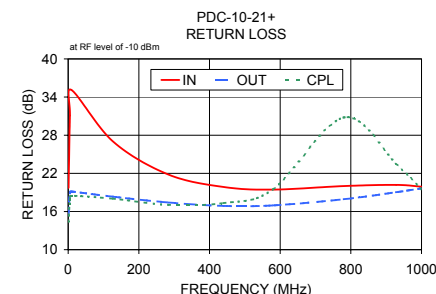
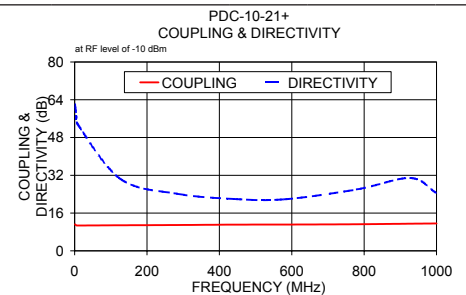
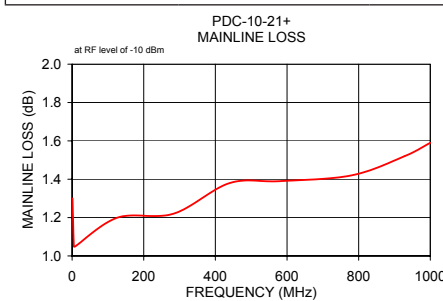
Frequency (MHz)	Mainline Loss (dB) In-Out	Coupling (dB) In-Cpl	Directivity (dB)	Return Loss (dB)		Cpl
				In	Out	
1.00	1.30	11.23	62.01	19.71	15.71	14.37
5.00	1.05	10.76	57.11	31.10	18.98	17.90
9.00	1.05	10.73	53.48	35.13	19.15	18.46
127.00	1.20	10.82	30.42	27.00	18.33	18.02
283.00	1.22	10.94	24.19	21.83	17.43	17.05
440.00	1.38	11.08	21.95	19.86	16.88	17.33
580.00	1.39	11.13	21.83	19.45	16.96	19.49
780.00	1.42	11.27	26.01	20.01	17.93	30.79
928.00	1.52	11.49	30.86	20.19	19.03	23.53
1000.00	1.59	11.60	24.46	19.91	19.64	19.50

Outline Drawing

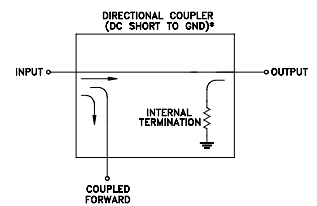


Outline Dimensions (inch/mm)

A	B	C	D	E	F	
.770	.800	.385	.400	.370	.400	
19.56	20.32	9.78	10.16	9.40	10.16	
G	H	J	K			wt
.200	.20	.14	.031			grams
5.08	5.08	3.56	0.79			5.2



Electrical Schematic



* ELECTRICAL SCHEMATIC IS FOR DIRECTIONAL COUPLER WITH INTERNAL TRANSFORMER(S) THAT ROUTES DC FROM RF PORTS TO GROUND.

Notes

- Performance and quality attributes and conditions not expressly stated in this specification document are intended to be excluded and do not form a part of this specification document.
- Electrical specifications and performance data contained in this specification document are based on Mini-Circuit's applicable established test performance criteria and measurement instructions.
- The parts covered by this specification document are subject to Mini-Circuits standard limited warranty and terms and conditions (collectively, "Standard Terms"); Purchasers of this part are entitled to the rights and benefits contained therein. For a full statement of the Standard Terms and the exclusive rights and remedies thereunder, please visit Mini-Circuits' website at www.minicircuits.com/WCLStore/terms.jsp

