



Fixed Attenuator

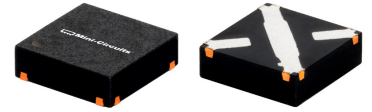
50Ω 0.5 W 6 dB DC to 8 GHz

FEATURES

- Wideband, DC to 8 GHz
- Miniature package, 3x3 mm MCLP™
- Specified to 8 GHz, useable to 10 GHz
- Excellent VSWR, 1.15:1 typ.

APPLICATIONS

- Cellular
- PCS
- Communications
- Radar
- Defense



Generic photo used for illustration purposes only

CASE STYLE: FG873

+RoHS Compliant

The +Suffix identifies RoHS Compliance. See our website for methodologies and qualifications

ELECTRICAL SPECIFICATIONS AT +25°C

Parameter	Condition (GHz)	Min.	Typ.	Max.	Unit
Frequency Range		DC	—	8	GHz
Attenuation, Nominal			6±0.3		dB
Attenuation, Flatness ¹	DC - 1		0.1		dB
	1 - 5		0.2		
	5 - 8		0.3		
VSWR	DC - 1		1.05	1.2	:1
	1 - 5		1.15	1.3	
	5 - 8		1.35		
Input Power ²				0.5	W

1. Flatness= variation over band divided by 2

2. RF power at 25°C case temperature: ½Watt. Derate linearly to 0.2 Watt at 85°C.

ABSOLUTE MAXIMUM RATINGS

Parameter	Ratings
Operating Temperature	-45°C to +85°C
Storage Temperature	-55°C to +100°C

Permanent damage may occur if any of these limits are exceeded.



MINIATURE PLASTIC

Fixed Attenuator

GAT-6+

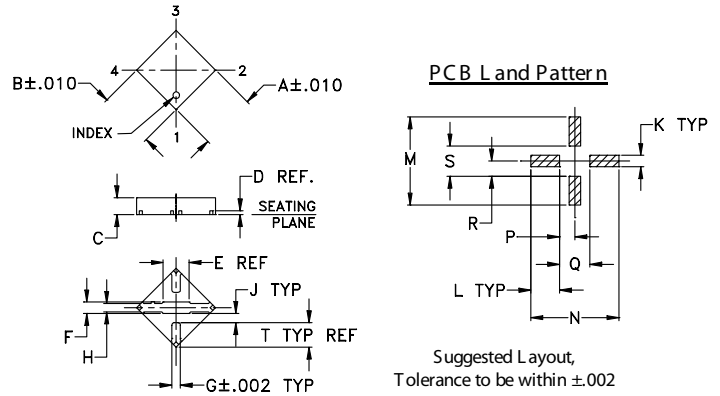
Mini-Circuits

50Ω 0.5 W 6 dB DC to 8 GHz

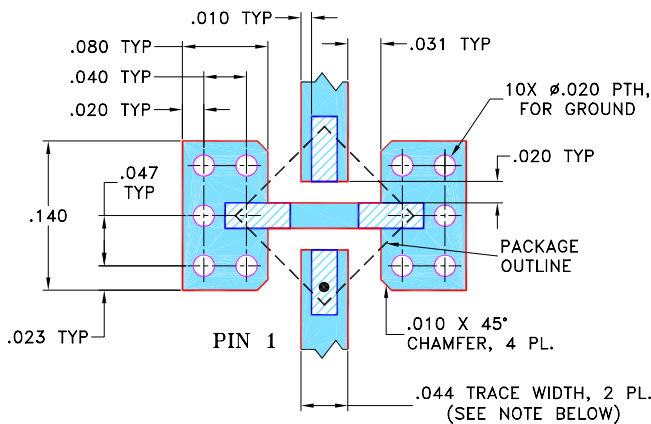
PAD CONNECTIONS

INPUT	1
OUTPUT	3
GROUND	2,4

OUTLINE DRAWING



DEMO BOARD MCL P/N: TB-154 SUGGESTED PCB LAYOUT (PL-126)



OUTLINE DIMENSIONS (Inch/mm)

A	B	C	D	E	F	G	H	J	
0.118	0.118	0.035	0.008	0.07	0.024	0.017	0.018	0.021	
3.00	3.00	0.89	0.20	1.78	0.61	0.43	0.46	0.53	
K	L	M	N	P	Q	R	S	T	wt
0.024	0.061	0.186	0.186	0.032	0.064	0.032	0.064	0.05	grams
0.61	1.55	4.72	4.72	0.81	1.63	0.81	1.63	1.27	0.02

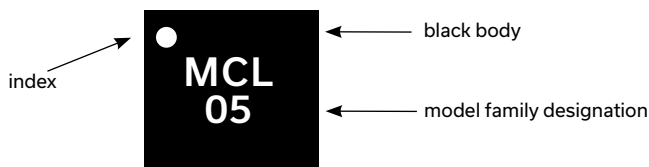
TAPE & REEL INFORMATION: F68

NOTES:

- TRACE WIDTH IS SHOWN FOR ROGERS RO4350B WITH DIELECTRIC THICKNESS .020" ± .0015"; COPPER: 1/2 OZ. EACH SIDE. FOR OTHER MATERIALS TRACE WIDTH MAY NEED TO BE MODIFIED.
- BOTTOM SIDE OF THE PCB IS CONTINUOUS GROUND PLANE.

- DENOTES PCB COPPER LAYOUT WITH SMOBC (SOLDER MASK OVER BARE COPPER)
- DENOTES COPPER LAND PATTERN FREE OF SOLDER MASK

PRODUCT MARKING



Marking may contain other features or characters for internal lot control





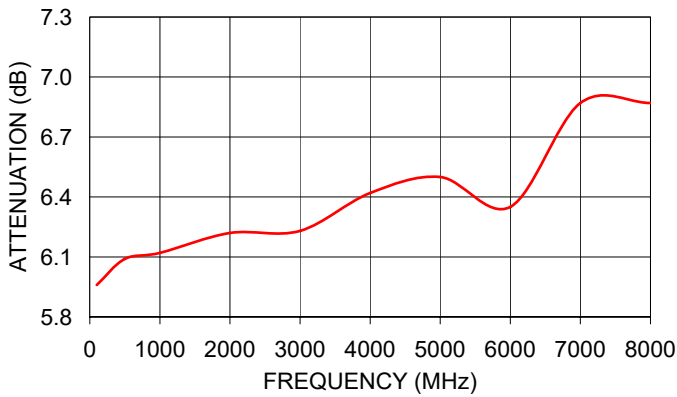
Fixed Attenuator

50Ω 0.5 W 6 dB DC to 8 GHz

TYPICAL PERFORMANCE DATA AND CHARTS

Frequency (MHz)	Attenuation (dB)	VSWR (:1)
100.00	5.96	1.03
500.00	6.09	1.03
1000.00	6.12	1.03
2000.00	6.22	1.02
3000.00	6.23	1.08
4000.00	6.42	1.11
5000.00	6.50	1.14
6000.00	6.35	1.17
7000.00	6.87	1.21
8000.00	6.87	1.32

GAT-6+
ATTENUATION



GAT-6+
VSWR

